

# ELISAS

that perform

DRG

Diabetes

Immunology

Gynecologic Endocrinology

Prenatal Supervision

Tumor Marker

Hematology

Iron Metabolism

Infectious Diseases

Hypertension



# DRG

# DRG Diagnostics

DRG Instruments GmbH, founded in 1973 by Dr. Geacintov, a subsidiary of DRG Intl. Inc., USA, is a diagnostics manufacturer and distributor with successful operations in over 100 countries. The DRG Group focuses on high technology medical diagnostic areas such as Diabetes Diagnosis, Gynecology, Oncology, Immunology, Infectious Diseases and Toxicology. The highly skilled DRG Staff of medical, clinical, marketing and service specialists are experts at taking innovative technology to market through local territory knowledge and contacts, end-user training, education and cost effective financial and logistical support. The DRG-Development and Immunoassay production facilities are located in Marburg, Germany, in addition to OEM manufacturing in the USA.

A range of new, occasionally unique ELISA kits has been developed. The DRG ELISA kits compete effectively in both price and performance in all major world diagnostics markets.

To complete the diagnostic reagent line, DRG supplies the clinical laboratory with all necessary equipment, including a semi-automatic microtiterplate processor, the DRG E-LizaMat 3000, and fully automated Open Systems for 2 or 4 microtiterplates, which are fully compatible with all ElisAs.

DRG has developed the FIRST fully automated random access Analyzer for Immunoassays, Clinical Chemistry and Immunoturbidimetry

**DRG:HYBRID•XL®**

The system was launched November 2013.

The DRG Group operates through a network of DRG subsidiaries in Germany, Poland, Russia, China and the Czech Republic, and through distributors in Europe, the Middle East, Africa and the Pacific Region. This infrastructure offers access to specialized medical markets in most major countries around the world.



## ELISAS that perform

### DRG

DRG develops and manufactures diagnostic ELISA test kits for use in clinical and research laboratories. The experience of our production and management team guarantees to provide high quality products, competitive prices and excellent customer service.

#### DRG-DIMA ELISAS

In October 2010 DRG announced the acquisition of the microtiter plate ELISA production of DIMA Corporation, a subsidiary of bioMérieux, in Lyon, France. This acquisition included the ELISAs free and total PSA, SHBG as well as TSH, total T3 und T4, which have been part of the DRG portfolio since a long time already.

Production Facility, Marburg



#### DRG-NOVUM ELISAS

At the end of 2003 DRG acquired the assets of Novum Diagnostica, Dietzenbach. Novum developed and manufactured a wide range of products to identify and manage infectious diseases.

Now DRG manufactures these ELISAS with the same excellent quality and offers these assays at competitive prices.

## New ELISA Hepcidin 25 (bioactive) high sensitive

### The gold standard in Hepcidin measurement

- Easy and straight forward assay procedure (no extraction or centrifugation)
- Total assay time < 2 hours
- All reagents ready to use
- Two controls included in the kit
- High sensitivity
- Good correlation to SELDI-TOF-MS

## Quality

DRG Instruments GmbH has established and applies a quality management system for the following scope: **Design and Development, Manufacture and Distribution of in vitro Diagnostics by Enzymeimmunoassays (ELISAS) and Radioimmunoassays (RIAS) Technology.**

Proof has been furnished that the requirements specified in EN ISO 13485:2012/AC:2012 EN ISO 9001:2008 ISO 13485:2003 CMDCAS are fulfilled.

We participate in a number of quality assessment schemes, which include Instand (Germany) and RfB, Referenzinstitut für Bioanalytik, Bonn.

DRG products meet the essential requirements of the directive 98/79/EC of 27. October 1998 on in-vitro diagnostic medical devices.



# Tumor Marker/Oncology

## CEA

EIA-1868

- Standard range: 5 - 100 ng/mL
- Incubation time: 90 min. at RT
- Sensitivity:  $\leq$  0.596 ng/mL

## TM-CA 15-3

EIA-5068

- Standard range: 25 - 200 U/mL
- Incubation time: 60/60/15 min.
- Sensitivity: 0.5 U/mL

## TPS

EIA-2354

- Standard range: 30 - 1200 u/mL
- Incubation time: 3 h/30 min. or 2 h/15 min. on a shaker

## TPA

EIA-2092

- Standard range: 1 - 15 ng/mL
- Incubation time: 3 h/30/15 min.
- Sensitivity: 0.1 ng/mL

## $\beta$ -HCG

EIA-1911

- Standard range: 5 - 200 mLU/mL
- Incubation time: 75 min.
- Sensitivity: <1 mLU/mL

## AFP

EIA-1468

- Standard range: 10 - 160 mLU/mL
- Short Incubation time: (40 min. at RT)
- Sensitivity:  $\leq$  0,3 mg/L

## TM-CA 125

EIA-5072

- Standard range: 25 - 600 U/mL
- Short incubation time: 60/15 min.
- Sensitivity: 0.75 U/mL

## TM-CA 72-4

EIA-5071

- Standard range: 3 - 100 u/mL
- Incubation time: 120/30 min
- Sensitivity: <0.79 U/mL

## SCC

EIA-4457

- Standard range: 1 - 50 ng/mL
- Incubation time: 60/30 min.

## S100B

EIA-5169

- Standard range: 100 - 5000 pg/mL
- Incubation time: 120/60/30 min.
- Sensitivity: 10 pg/mL

## TM-CA 19-9

EIA-5069

- Standard range: 15 - 240 U/mL
- Incubation time: 60/60/30 min.
- Sensitivity: 0.7 U/mL

## PSA total $\text{CE}$

EIA-3719

- Standard range: 1.56 - 25 ng/mL
- Sensitivity:  $\leq$  0.2 ng/mL
- Exc. correlation

## Free PSA $\text{CE}$

EIA-4189

- Standard range: 0.75 - 12 ng/mL
- Sensitivity:  $\leq$  0.1 ng/mL
- Highly specific

## UBC

EIA-2355

For diagnosis of Urinary Bladder Cancer

- Standard range: 1-15  $\mu$ g/L
- Incubation time: 120/15 min.
- Sensitivity: 0.1  $\mu$ g/L

## NSE

EIA-4610

- Standard range: 4 - 100 ng/mL
- Incubation time: 60/15 min.



## TM-CYFRA 21-1

EIA-5070

- Standard range: 3 - 50 ng/mL
- Short Incubation time: 60/15 min.
- Sensitivity: 0.15 ng/mL

## Chromogranin A

EIA-4937

For diagnosis and monitoring of patients with carcinoid tumours, islet cell tumours, pheochromocytoma, neuroblastoma, and other tumours of neuroendocrine origin. It may also be used for small-cell lung cancer and prostate cancer, in men with normal PSA levels.

- Standard range: 50 - 1500  $\mu$ g/mL
- Incubation time: 90 min.

## L1-CAM

EIA-5074

(L1 cell adhesion molecule)  
Pathogenetic factor in Endometriosis  
LICAM is over expressed in ovarian and endometrial carcinomas and is associated with a bad prognosis LICAM expression is higher in atypical endometriosis. Women with atypical endometriosis have a higher probability for developing ovarian cancer.

- Standard range: 0 - 140 ng/mL
- Incubation time: 60/60/30/15 min.

# Gynecologic Endocrinology

## Estradiol

EIA-2693

- Sensitivity: 9.71 pg/mL
- Standard range: 25 - 2000 pg/mL

## Progesterone

EIA-1561

- Sensitivity: 0.05 ng/mL
- Standard range: 0.3 - 40 ng/mL

## 17 $\alpha$ -OH Progesterone

EIA-1292

- Sensitivity: 0.034 ng/mL
- Standard range: 0.15 - 20 ng/mL



## Testosterone

EIA-1559

- Sensitivity: 0.083 ng/mL
- Standard range: 0.2 - 16 ng/mL

## Free Testosterone

EIA-2924

- Sensitivity: 0.06 pg/mL
- Standard range: 0.2 - 100 pg/mL

## Dihydrotestosterone

EIA-5761

- Sensitivity: 6.0 pg/mL
- Standard range: 10 - 1000 pg/mL

## DHEA-S

EIA-1562

- Sensitivity: 0.044  $\mu$ g/mL
- Standard range: 0.1 - 10  $\mu$ g/mL

## DHEA

EIA-3415

- Sensitivity: 0.1 ng/mL
- Standard range: 0.37 - 30 ng/mL

## Androstendione

EIA-3265

- Sensitivity: 0.019 ng/mL
- Standard range: 0.1 - 10 ng/mL

## Estrone

EIA-4174

- Sensitivity: 2.21 pg/mL
- Standard range: 13 - 1000 pg/mL

## SHBG

EIA-2996

- (Sexual Hormone Binding Globuline)
- Sensitivity: 0.77 nmol/L
  - Standard range: 4 - 260 nmol/L

## Prolactin

EIA-1291

- Sensitivity: 0.35 ng/mL
- Standard range: 5 - 200 ng/mL

## FSH

EIA-1288

- Sensitivity: 0.856 mLU/mL
- Standard range: 5 - 100 mLU/mL

## LH

EIA-1289

- Sensitivity: 1.27 mLU/mL
- Standard range: 10 - 200 mLU/mL

## $\beta$ -HCG

EIA-1911

- Standard range: 5 - 200 mIU/mL
- Incubation time: 75 min.
- Sensitivity: < 1 mIU/mL

## Estradiol sensitive

EIA-4399

- Sensitivity: 1.399 pg/mL
- Standard range: 3 - 200 pg/mL



# Prenatal Supervision



## First Trimester Down Syndrome

PAPP-A has been found to be the best marker for Down Syndrome screening in the first trimester (10.-13. week of pregnancy). In combination with free  $\beta$ -HCG and the determination of nuchal translucency a detection rate of 89 % with a false positive rate of only 5 % is achieved.

### PAPP-A CE 0197 EIA-2397

(Pregnancy Associated Plasma Protein A)

- Standard range: 0 - 60  $\mu$ g/mL
- Incubation time: 2 x 30 min. / 15 min

### Free $\beta$ -HCG\* CE 0197 EIA-4718

- Standard range: 10.0 - 200 ng/mL
- Short incubation time: 80 min.
- Sensitivity: 0.2 ng/mL

\*) Not available in USA

## Triple Diagnosis

AFP, HCG and Free Estriol are especially useful in the context of Triple-Diagnosis for providing a risk evaluation for Down-Syndrome, Turner-Syndrome, Trisomie 18 and Triploidie, as well as neural tract and abdominal wall defects.

### Free Estriol EIA-1612

- Standard range: 0,3 - 40 ng/mL
- Short incubation time: (90 min. at RT)
- Sensitivity:  $\leq$  0,2 ng/mL

### PKU ENZ-4502 / ENZ-4743

- Standard range: 1 - 16 mg/dL
- Incubation time: 60 min.
- Sensitivity: 0.29 mg/dL (5 mm punched)
- Wavelength: 450 nm

### AFP EIA-1468

- Standard range: 10 - 160  $\mu$ mL
- Short incubation time: (40 min. at RT)
- Sensitivity:  $\leq$  0,2  $\mu$ mL

### HPL EIA-1283

- Standard range: 1,25 - 20 mg/L
- Short incubation time: (40 min. at RT)
- Sensitivity:  $\leq$  0,3 mg/L

### PLGF EIA-4529

PLGF (Placenta Growth Factor) a new marker for

## Preeclampsia

Preeclampsia is a common hypertensive disorder of pregnancy characterized by systemic endothelial dysfunction and diagnosed by the appearance of hypertension and proteinuria. Potentially life-threatening complications of preeclampsia include seizures, cerebral hemorrhage, disseminated intravascular coagulation, and renal failure.

- Standard range: 25 - 1000 pg/mL
- Incubation time: 2 h 30 min.
- Sample: 25  $\mu$ L Serum
- Sensitivity: < 1.062 pg/mL
- Cut off: 15 - 18 WOP\* < 42 pg/ml

### HCG EIA-1469

- Standard range: 5 - 1000  $\mu$ mL
- Short incubation time: (40 min. at RT)
- Sensitivity:  $\leq$  2  $\mu$ mL

\*) WOP = week of pregnancy



# Iron Metabolism

## Hepcidin 25 (bioactive) high sensitive EIA-5782

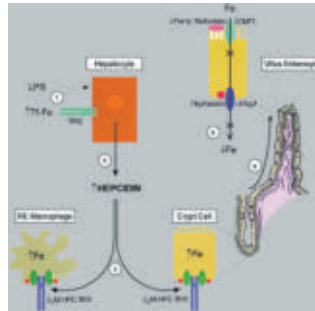
New

**ELISAS for the quantitative measurement of Hepcidin 25 in human serum or plasma.**

Hepcidin is a small cystein-rich peptide produced in the liver. This molecule regulates the absorption of iron in the body similarly to the correlation of insulin and sugar. Hepcidin was initially isolated as a 25 amino acid (aa) peptide

- Sensitivity: 0.135 ng/mL
- Incubation: 60/30/20 min
- Standard Volume: 20 µL serum/plasma
- Standard Range: 1 - 81 ng/mL
- Assay Type: competitive
- Excellent correlation to SELDI results

in human plasma and urine exhibiting antimicrobial activity. Human Hepcidin is produced from a 84 aa precursor including a putative (24 aa) signal peptide.



Application of the present ELISA allows the detection and determination of Hepcidin 25 in serum or plasma.

### Hepcidin Patents:

- |                 |                      |
|-----------------|----------------------|
| US 7.320.894 B2 | EU 2 109 624         |
| US 7.411.048 B2 | EU 603 43 464.9      |
| US 7.649.081 B2 | EU 1.578.254         |
| US 7.749.713 B2 | Japan 4638350        |
| US 7.998.691 B2 | Russia 2 359 268 CZ  |
| US 8.003.338 B2 | China 200380108964.8 |
| US 8.017.737 B2 | Hong Kong 1 114419   |
| US 8.263.352 B2 | Canada 2.506.668     |
| US 8.304.197 B2 | *EU 07 723 512.2     |
| US 8.304.258 B2 | Pending              |

# Diabetes / Obesity

## Insulin

EIA-2935

- Standard range 6.25 - 100 µLU/mL
- High sensitivity (1.5 µLU/mL)
- Short incubation time 30/30/15 min.

## C-Peptide

EIA-1293

- High sensitivity (0.05 ng/mL)
- No cross reactivity with Insulin and Proinsulin
- Standard range 0.2 - 16 ng/mL
- Excellent correlation to established RIA's

## Proinsulin

EIA-1560

- High sensitivity (0.5 pmol/L)
- No cross reaction with C-Peptide Insulin, 32 - 33 split and 31 - 32 des Proinsulin
- Standard range (5 - 100 pmol/L)

## Leptin ELISAS

EIA-2395

- Standard range: 2 - 100 ng/mL
- Sensitivity: 1.0 ng/mL

## Adiponectin

EIA-4574

- Sensitivity: 26 ng/mL
- Incubation: 120/10-15 min.

## anti-GAD 65

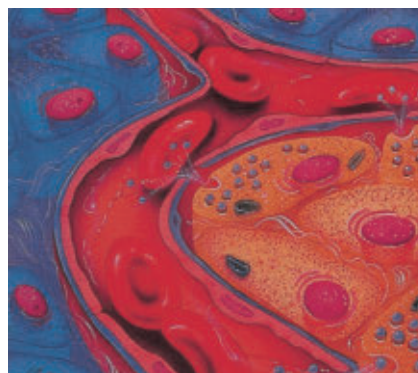
EIA-4087

- Standard range: 5 - 2.000 U/mL (NIBSC 97/550)
- Incubation time: 60/60/20/20 min.
- Lower detection limit: 0.57 U/mL
- Clinical specificity: 98%

## anti-IA-2

EIA-4088

- Standard range: 15 - 4.000 U/mL (NIBSC 97/550)
- Incubation time: ON/60/20/20 min.
- Lower detection limit: 0.3 U/mL
- Clinical specificity: 99%



## IAA (Insulin Autoantibodies) EIA-1593

- Screening test
- Incubation: 16h/60/30 min.

## Also available:

## Rat Insulin

EIA-2048

- Sample: 25µL Serum or Plasma
- Incubation: 60/15 min
- Standard range: 0.15-5.5 µg/L

## Insulin ELISAS

- Porcine, Ovine, Bovine, Equine, Canine
- Rat ultrasensitive
- Lispro, Iso
- Human ultrasensitive

## LEPTIN RIAS

- Human, Rat, Mouse, Primate

C-Peptide (Rat) RIA + ELISA

Insulin RIA (Rat)

Proinsulin RIA

Neuropeptid Y-RIA

ICA - ELISA

anti GAD - RIA

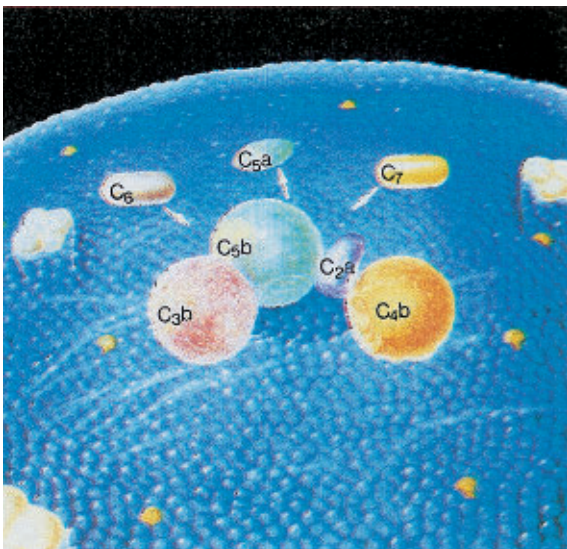
anti - IA2 - RIA

## Ghrelin unacylated

EIA-5257

- Sensitivity: 0.2 pg/mL
- Incubation: 180/30-60 min.

# Hematology/Complement System



## C5a (Complement Anaphylatoxin)

EIA-3327

### Clinical Indications:

- Pathogenesis of septic shock
- Detection of acute Pancreatitis
- Detection of renal allograft rejection after kidney transplantation
- Monitoring of patients after cardio-pulmonary bypass a.o. surgical interventions

### Features:

- Standard range: 0.1 - 10 µg/L
- Sample: 50 µL plasma or urine
- 4 Standard plasmas and 1 control plasma
- Incubation: 20/15/15 min. at RT
- Sensitivity: < 0.02 µg/L
- Reference range: 0.15 - 0.5 µg/L

*C5a and PAP were formerly manufactured by Dade Behring*

## PAP (Plasmin α2-antiplasmin complex)

EIA-3763

An early marker for fatal outcome in patients after major general surgery

- Standard range: 50 - 5000 ng/mL
- Sensitivity: 10 ng/mL

# Growth Factors

## IGF-I 600

EIA-4140

### Clinical Indications:

Diagnosis of growth disorders in children  
Diagnosis and monitoring of acromegaly

### Features:

Sample: 50 µl prepared serum sample  
Ready-to-use reagents  
Incubation: 120/60/30 min. at RT  
Standard range: 1 - 600 ng/mL  
Sensitivity: 0.15 ng/mL

## TGFβI

EIA-1864

- Standard range: 20 - 600 pg/mL
- Sensitivity: 1.9 pg/mL

## TGFβII

EIA-2396

- Standard range: 30 - 1000 pg/mL
- Sensitivity: 10 pg/mL

# Vitamines/ Bone Metabolism

New

## 25-OH Vitamin D (total)

EIA-5396

- Vitamin D2 and Vitamin D3 measurement
- Standard range: 4 - 130 ng/mL
- Incubation time: 30/60/15 min.
- Sensitivity: 2.89 ng/mL
- Excellent correlation to DiaSorin RIA

# Alzheimer's Research

## Amyloid beta Auto-Ab

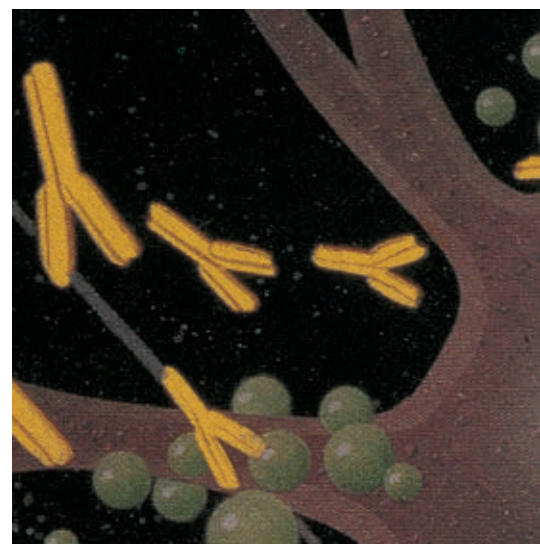
EIA-5099

- Sample volume: 10 µl Serum
- Incubation time: 30/30/10 min
- Assay dynamic range: 1.7 - 120 RTU
- Sensitivity: 1.7 RTU

## Amyloid beta (1-40)

EIA-5231

- Sample volume: 100 µl Serum/Plasma
- Incubation time: 180/30/20 min
- Assay dynamic range: 1.66 - 750 pg/mL
- Sensitivity: 1.66 pg/mL





# Thyroid Function

## T3

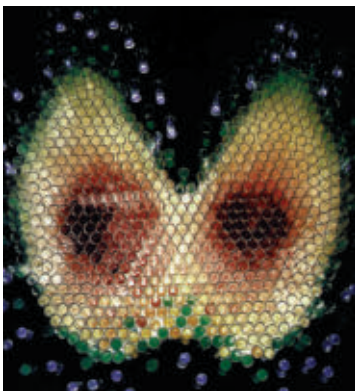
EIA-4569

- Standard range: 0.5 - 10.0 ng/mL
- Incubation: 30/30/10 min.
- Sensitivity: 0.1 ng/mL

## T4

EIA-4568

- Standard range: 25 - 250 nmol/L
- Incubation: 5/80/10 min.
- Sensitivity: 10 nmol/L



## TSH

EIA-4171

- Standard range: 0.25 - 15 mU/L
- Incubation: 10/90/20 min.
- Sensitivity: 0.06 mU/L

## Free T3

EIA-3801

- Standard range: 0.6 - 15 pg/mL
- Incubation: 60/15 min.

## Free T4

EIA-2386

- Standard range: 0.4 - 12.0 ng/dL
- Incubation: 60/20 min.
- Sensitivity: 0.011 µg/dL

## Thyroglobulin TG Ag

EIA-3377

- Standard range: 3 - 300 ng/mL
- Incubation: 60/60/15 min.

## TG Ab

EIA-3708

- Standard range: 100 - 4000 U/mL
- Incubation: 30/30/30 min.

## TPO Ab

EIA-3561

- Standard range: 50 - 600 LU/mL
- Incubation: 30/30/30 min.

## TSH Rec.

EIA-3369

### Features:

- 4 calibrators: I-40 U/L
- Sample: 100 µL Serum
- Incubation: 120/20/20/20 min.

# Cardiac Diseases/Hypertension

## PAPP-A (ultrasensitive)

EIA-4512

**Pregnancy-Associated Plasma Protein A, a new candidate marker for the early diagnosis of Acute Coronary Syndroms (ACS).**

- Incubation time: 2 h 45 min.
- Standard range: 0 - 450 ng/mL
- Sample: 100 µL Serum

\*) Not available in USA

## CYR 61

EIA-5108

(CCN-1, Cystein-rich-protein)

- Standard range: 40 - 1000 pg/mL
- Incubation time: 120/30/15 min.
- Anal. Sensitivity: 14.9 pg/mL

## Renin (active)

EIA-5125

Active Renin, without Extraction

- Incubation-time: 90/90/15 min.
- Standard range: 4 - 128 pg/mL
- Sensitivity: 0.81 pg/mL

## Aldosterone

EIA-5298

- Incubation-time: 60/30 min.
- Standard range: 20 - 1000 pg/mL
- Anal. Sensitivity: < 5,7 pg/mL

# Liver Fibrosis

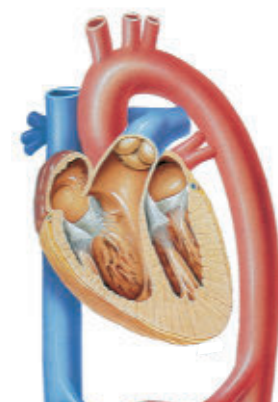
## CTGF

New

EIA-5195

(Connective Tissue Growth Factor)  
Potential new marker for liver fibrosis in early stages (F1, F2)

- Specificity 78% (liver fibrosis F1)
- Sensitivity 83,7% (liver fibrosis F1)
- Standard range: 0.1 - 500 ng/mL
- Incubation time: 120/60/30/15 min.
- Sensitivity: 3.2 ng/mL





# Salivary Steroid ELISA Kits

## Cortisol

SLV-2930

- Sensitivity: 0.537 ng/mL
- Standard range: 2 - 80 ng/mL

## Progesterone

SLV-2931

- Sensitivity: 3.8 pg/mL
- Standard range: 10 - 5000 pg/mL

## Estradiol

SLV-4188

- Sensitivity: 0.4 pg/mL
- Standard range: 0.1 - 100 pg/mL

## DHEA

SLV-3012

- High Sensitivity: 2.186 pg/mL
- Standard range: 10 - 1440 pg/mL

## 17 $\alpha$ -OH Progesterone

SLV-3140

- Sensitivity: 2.5 pg/mL
- Standard range: 10 - 1000 pg/mL

## Testosterone

SLV-3013

- Sensitivity: 7.1 pg/mL
- Standard range: 10 - 5000 pg/mL

## Estrone

SLV-5228

- Sensitivity: 4.7 pg/mL
- Standard range: 10 - 300 pg/mL
- Short incubation time

## Androstendione

SLV-4780

- Sensitivity: 5 pg/mL
- Standard range: 20 - 1000 pg/mL

## Free Estriol

SLV-3653

- Sensitivity: 3 pg/mL
- Standard range: 5 - 4000 pg/mL

## Cortisol HS (high sensitive)

SLV-4635

- Sensitivity: 0.012 ng/mL
- Standard range: 0.1-30 ng/mL

also available:

- Melatonin
- DHEA-S

# CLAS (Chemiluminescence Immunoassays)

## Cortisol

CLA-4666

- Sensitivity: 0.5 ng/mL
- Standard range: 20-800 ng/mL

## Testosterone

CLA-4662

- Sensitivity: 0.05 ng/mL
- Standard range: 0.2-1.6 ng/mL

## 17 OH-Progesterone

CLA-4665

- Sensitivity: 0.05 ng/mL
- Standard range: 0.15-20 ng/mL

## Progesterone

CLA-4663

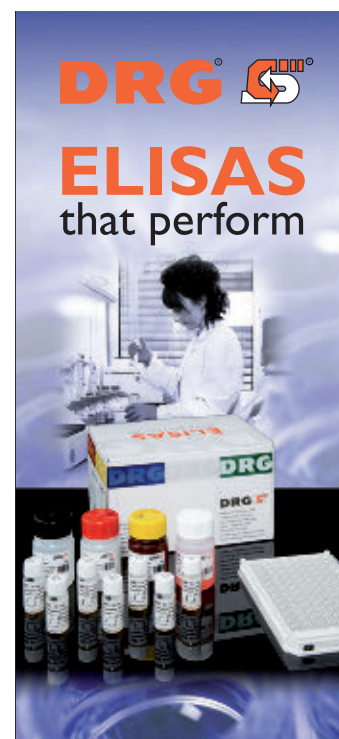
- Sensitivity: 0.04 ng/mL
- Standard range: 0.3-40 ng/mL

Also available:

- Estradiol CLA
- DHEA-S CLA
- CA 72-4 CLA
- CYFRA 21-1 CLA
- Prolactin CLA
- Renin
- Aldosterone

New

- Toxo IgM
- CMV IgM
- Rubella IgM
- HSV 1 IgM
- HSV 2 IgM



# Pituitary/Adrenal Function

EIA-1887, EIA-2989

## Cortisol (Serum, Urine)

- Sensitivity: 2.5 ng/mL
- Standard range: 20 - 800 ng/mL

## Cortisol (Saliva)

SLV-2930

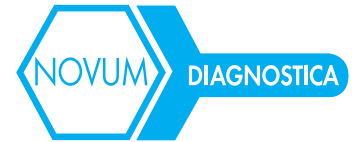
- Sensitivity: 0.537 ng/mL
- Standard range: 2 - 80 ng/mL

## Corticosterone

EIA-4164

- Sensitivity: 1.6 nmol/L
- Standard range: 5 - 240 nmol/L

# Infectious Diseases



## NEW ELISAS

Chikungunya IgG/IgM  
Coxiella Phase 1, 2 IgG/IgM  
Fasciola IgG  
Hantavirus dobrava IgG/IgM  
Hantavirus hantaan IgG/IgM

## Bacteriology

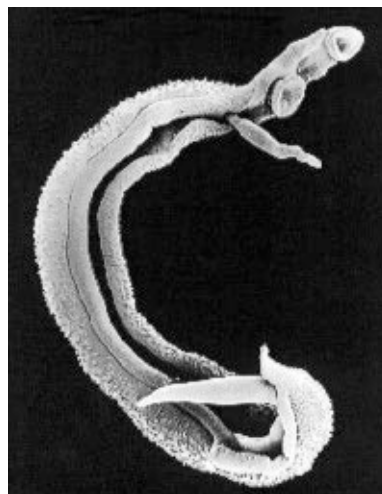
Bordetella pertussis / toxin IgA  
Bordetella pertussis / toxin IgG  
Bordetella pertussis / toxin IgM  
Borrelia burgdorferi IgG  
Borrelia burgdorferi IgM  
Brucella IgG  
Brucella IgM  
Campylobacter Ag  
Chlamydia trachomatis Ag  
Chlamydia trachomatis IgA  
Chlamydia trachomatis IgG  
Chlamydia trachomatis IgM  
Chlamydia pneumoniae IgA  
Chlamydia pneumoniae IgG  
Chlamydia pneumoniae IgM  
Clostridium difficile Toxin A+B Ag (stool)  
Coxiella burnetii  
(Q-Fever) Phase 1 IgG  
Coxiella burnetii  
(Q-Fever) Phase 2 IgG  
Coxiella burnetii  
(Q-Fever) Phase 2 IgM  
Corynebacterium diptheriae IgG  
E.coli O157 Ag (stool)  
E.coli Verotoxin Ag (stool)

## Fungi

Aspergillus fumigatus IgA  
Aspergillus fumigatus IgG  
Aspergillus fumigatus IgM  
Candida albicans IgA  
Candida albicans IgG  
Candida albicans IgM

Hantavirus puumala IgG/IgM  
Mycoplasma hominis IgA/IgG/IgM  
Ureaplasma urealyticum  
IgA/IgG/IgM

Haemophilus influenzae B (H/B) IgG  
Helicobacter pylori IgA  
Helicobacter pylori IgM  
Helicobacter pylori IgG  
Helicobacter pylori Ag (stool)  
Legionella pneumophila Ag (urine)  
Leptospira biflexa IgG  
Mycobacterium tuberculosis IgA  
Mycobacterium tuberculosis IgG  
Mycobacterium tuberculosis IgM  
Mycoplasma hominis IgA  
Mycoplasma hominis IgG  
Mycoplasma hominis IgM  
Mycoplasma pneumoniae IgA  
Mycoplasma pneumoniae IgG  
Mycoplasma pneumoniae IgM  
Rickettsia conorii IgG  
Rickettsia conorii IgM  
Tetanus toxin IgG  
Treponema pallidum IgG  
Treponema pallidum IgM  
Treponema pallidum screen  
Ureaplasma urealyticum IgA  
Ureaplasma urealyticum IgG  
Ureaplasma urealyticum IgM  
Yersinia enterocolitica IgA  
Yersinia enterocolitica IgG  
Yersinia enterocolitica IgM



## NEW CLAS

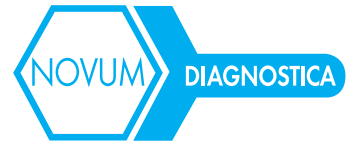
Toxoplasma IgM  
Rubella IgM  
CMV IgM  
HSV 1 IgM  
HSV 2 IgM



## Parasites

Ascaris lumbricoides IgG  
Cryptosporidium Ag (stool)  
Echinococcus IgG  
Entamoeba histolytica Ag (stool)  
Entamoeba histolytica IgG  
Fasciola IgG  
Giardia lamblia Ag (stool)  
Leishmania donovani (VL) IgG  
Malaria Screen (P. falciparum, P. vivax, P. ovale, P. malariae) IgA/IgG/IgM  
Schistosoma mansoni IgG  
Strongyloides stercoralis IgG  
Taenia solium IgG  
Toxocara canis IgG  
Toxoplasma gondii IgA  
Toxoplasma gondii IgG  
Toxoplasma gondii IgM  
Trichinella spiralis IgG  
Trypanosoma cruzi IgG (Chagas)

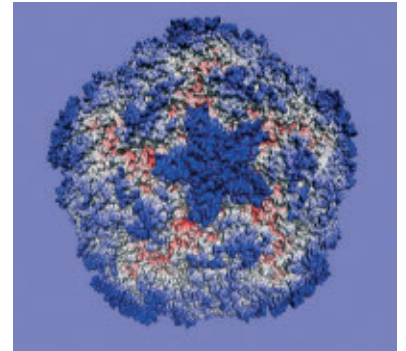
# Infectious Diseases



## Virology

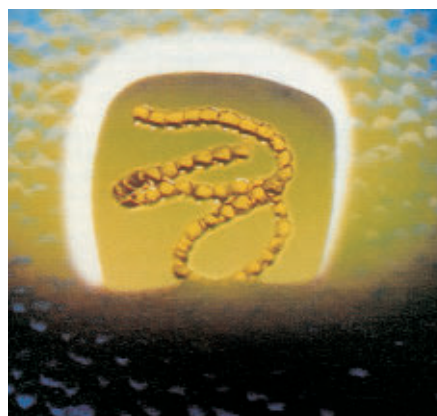
Adenovirus Ag (stool)  
Adenovirus IgA  
Adenovirus IgG  
Adenovirus IgM  
Astrovirus Ag (stool)  
Chikungunya IgG  
Chikungunya IgM  
Coxsackie B Virus IgM (CoxB)  
Cytomegalovirus (CMV) IgG  
Cytomegalovirus (CMV) IgM  
Dengue Virus IgG  
Dengue Virus IgM  
Epstein Barr Virus (EA) IgA  
Epstein Barr Virus (EA) IgG  
Epstein Barr Virus (EA) IgM  
Epstein Barr Virus (VCA) IgA  
Epstein Barr Virus (VCA) IgG  
Epstein Barr Virus (VCA) IgM  
Epstein Barr Virus (EBNA-1) IgA  
Epstein Barr Virus (EBNA-1) IgG  
Epstein Barr Virus (EBNA-1) IgM  
Hantavirus dobrava IgG/IgM  
Hantavirus hantaan IgG/IgM  
Hantavirus puumala IgG/IgM  
Herpes Simplex Virus Type 1 (HSV-1) IgG  
Herpes Simplex Virus Type 1 (HSV-1) IgM  
Herpes Simplex Virus Type 2 (HSV-2) IgG  
Herpes Simplex Virus Type 2 (HSV-2) IgM  
Herpes Simplex Virus Type 1+2 (HSV-1+2) IgG  
Herpes Simplex Virus Type 1+2 (HSV-1+2) IgM  
Influenza A IgA  
Influenza A IgG  
Influenza A IgM  
Influenza B IgA  
Influenza B IgG  
Influenza B IgM  
Japanese Encephalitis Virus IgG

Measles Virus IgG  
Measles Virus IgM  
Mumps Virus IgG  
Mumps Virus IgM  
Norovirus Ag  
Parainfluenza 1/2/3 IgA  
Parainfluenza 1/2/3 IgG  
Parainfluenza 1/2/3 IgM  
Parvovirus B 19 IgG  
Parvovirus B 19 IgM  
Rotavirus Ag (stool)  
Poliomyelitis Virus IgG  
Respiratory Syncytial Virus (RSV) IgA  
Respiratory Syncytial Virus (RSV) IgG  
Respiratory Syncytial Virus (RSV) IgM  
Rubella IgG  
Rubella IgM  
Tick-borne encephalitis Virus (TBE) IgG  
Tick-borne encephalitis Virus (TBE) IgM  
Varicella Zoster Virus (VZV) IgA  
Varicella Zoster Virus (VZV) IgG  
Varicella Zoster Virus (VZV) IgM  
West Nile Virus IgG  
West Nile Virus IgM



## Hepatitis

HAV Ab	HCV Ab
HAV IgM	HCV IgM
HBc Ab	HCV Ab conf.
HBc IgM	HDV Ab
HBe Ag/Ab	HDV Ag
HBs Ab	HDV IgM
HBs Ag	HEV Ab
HBs Ag conf.	HEV Ag
	HEV IgM

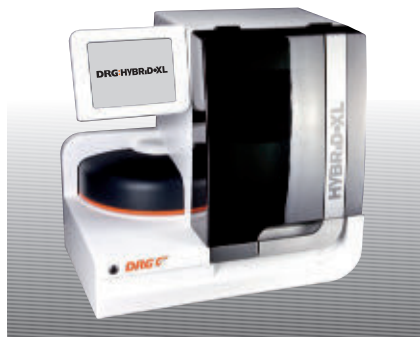


## Retroviruses

HTLV I & II Ab  
HIV I & 2 Ab/Ag

# DRG:HYBRID•XL®

## Fully automated Random Access Analyzer for Immunoassays and Clinical Chemistry



DRG introduces the totally newly designed **DRG:HYBRID•XL** Analyzer: This innovative and unique technology allows, for the first time, the simultaneous measurement of immunoassays and clinical chemistry parameters including turbidimetric tests in one sample.



### Specifications

#### Test Principle:

Enzym Immunoassays  
Clinical Chemistry  
Immunoturbidimetry

#### Samples/Cartridges:

Up to 40 samples/run  
Random access possible  
STAT possible  
Reagents on board (cartridge)  
Barcoded reading of samples and reagents

#### Calibration:

Barcoded Master Curve  
2 point recalibration

#### Efficiency:

Up to 40 tests/hour  
Benchtop Analyzer  
(60.8 x 63.5 x 58.6 cm high)  
Clot detection  
Liquid level detection  
Long stability (1 year) of the reagents

#### Handling/Interface:

Touchscreen Monitor (8.5 inch.)  
Bi-directional Interface (ASTM)

### Targeted assay menu:

Finally the targeted assay menu will comprise more than 100 tests, including some unique parameters like 17-OH Progesterone, CA 72-4, Free Testosterone, Renin, Aldosterone, 25 OH-Vitamin D, D-Dimer, Homocystein, HbA1c, Digitoxin and many others.



## DRG Subsidiaries

### China

#### DRG International, Inc. Beijing office

Unit 912, Landmark Tower I  
8 North Dongsanhuan Road  
Chaoyang District  
Beijing 100004 P. R. China  
Tel: 86 (10) 6590 0239  
Fax: 86 (10) 6590 0231  
E-Mail: drgchina@drg-international.com  
www.drg-international.com.cn

### Czech Republic

#### DRG spol. s r.o.

Sumavska 33  
61254 Brno, Czech Republic  
Tel/Fax: 420 (5) 41 23 53 26  
E-Mail: drgbrno@login.cz

### Poland

#### DRG MedTek South Poland

ul. Piotra Skargi 28  
44-100 Gliwice, Poland  
E-Mail: drg\_wj@medianet.pl  
www.drg.alpha.pl

### Poland

#### DRG MedTek Sp. z o.o.

ul. Wita Stwosza 24  
02-661 Warszawa, Poland  
Phone: 48 (22) 8 47 82 44;  
8 47 83 75  
Fax: 48 (22) 8 43 72 74  
E-Mail: office@drgmedtek.pl  
www.drgmedtek.pl

### Russia - Moscow

#### DRG TechSystems ZAO

34/1 Novocheremushkinskaya street,  
117218 Moscow (Profsovnaya)  
Tel: +7 (499) 277 07 20  
Tel: +7 (499) 724 25 81  
Tel: +7 (499) 724 26 36  
Tel: +7 (499) 724 26 74  
Tel: +7 (499) 724 27 31  
Tel: +7 (499) 724 29 98  
Fax: +7 (499) 724 29 49  
www.drgtech.ru

### Russia - St. Petersburg

#### DRG Biomed O.O.O.

ul. Serdobolskaja - 1# 183  
St. Petersburg 19 41 56, Russia  
Tel: 7 (812) 4 92 46 93 / 4 92 57 93  
Fax: 7 (812) 4 96 00 47  
E-Mail: drg@drgspb.ru  
www.drgspb.ru



**DRG Instruments GmbH, Germany**  
Frauenbergstraße 18  
D-35039 Marburg  
Tel. +49 (0) 64 21/170 00  
Fax +49 (0) 64 21/170050  
Internet: www.drg-diagnostics.de  
E-mail: drg@drg-diagnostics.de

Local Distributor



#### DRG International Inc. USA

841 Mountain Avenue  
Springfield, N.J. 07081 U.S.A.  
Tel: +1 (973) 564-7555  
Fax: +1 (973) 564-7556  
Internet: www.drg-international.com  
E-Mail: corp@drg-international.com