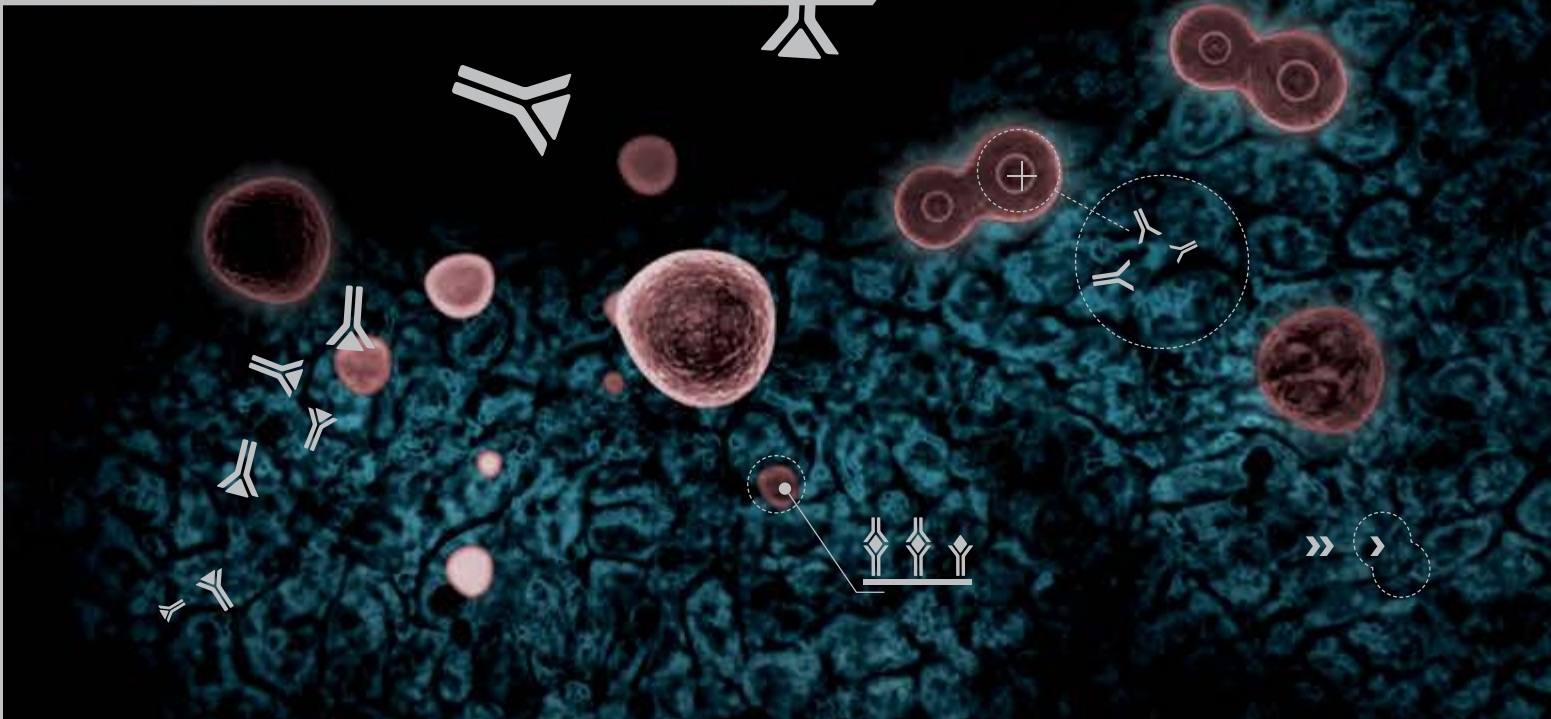


# BIOVENDOR

RESEARCH AND DIAGNOSTIC PRODUCTS

RESEARCH TOPICS INDEX



## *Immunoassays*

Enzyme-Linked Immunosorbent Assay (ELISA) combines the specificity of antibodies with the sensitivity of enzyme catalysis-multiplied signal. The ability of the antibodies to recognize individual target molecules and bind them with high affinity is joined with our ability to prepare antibodies of the required characteristics by modern technologies. It makes immunoanalytical or immunodiagnostic methods powerful tools for the determination of specified molecule concentration in very complex biological matrices like serum/plasma, cerebrospinal fluid, bronchoalveolar lavage, urine, breast milk, tissue extracts, cell culture media, etc. The method is characterized by high sample throughput and does not require expensive equipment in the laboratory. BioVendor's use of modern immunoassay formats has enabled high assay sensitivity, with an emphasis on superior analytical characteristics and user-friendly kit performance.

### ► FEATURES

#### **Format**

A broad spectrum of ELISA or ELISA-like assay formats is used. You can find a short description in the catalog and a detailed description in the product datasheet for each kit.

#### **Samples**

Follow instructions for sample collection, preparation and storage as described in the product datasheet referring to a particular kit.

#### **Applications**

See the product datasheet to learn which of the biological matrices such as serum/plasma, cerebrospinal fluid, bronchoalveolar lavage, urine, breast milk, tissue extracts, cell culture media, etc. were evaluated for a particular kit.

#### **Specificity**

We offer ELISAs applicable for samples of human origin as well as the most commonly used animal models (mouse, rat and others). The main application is indicated by a product name. Read the product datasheet referring to a particular kit to find full cross-reactivity data.

#### **Storage**

The kits are typically stored at 2~8 °C, some of them at -20°. Please follow the storage conditions that are indicated on the kit packaging label.

#### **RUO**

Products intended for research use only.

#### **IVD**

Some of BioVendor's ELISA kits are registered to be used as *in vitro* diagnostic medical devices according to the EU Directive 98/79/EC. Those kits are labeled with **IVD CE mark** and are approved to be used as *in vitro* diagnostics in the EU countries or in the countries where this registration is accepted. In the countries where this registration is not valid, the same kits have to be used as Research-Use-Only products. This limitation applies particularly, but not exclusively, to the USA, Canada and Japan.

#### **Quality Control**

BioVendor's ELISA kits pass quality control tests and are provided with a Certificate of Analysis.

## ANIMAL STUDIES

HUMAN 8-OHdG CHECK ELISA (MULTISPECIES SPECIFICITY)  
 HUMAN 8-OHdG CHECK (ULTRASENSITIVE) ELISA (MULTISPECIES SPECIFICITY)

**A** MOUSE ADIPOCYTE FABP ELISA  
 HUMAN ADIPONECTIN PENTASET  
 MOUSE ADIPONECTIN ELISA  
 MOUSE ADIPONECTIN PENTASET  
 MOUSE/RAT ADIPONECTIN HMW ELISA  
 BOVINE ALBUMIN ELISA  
 MOUSE ALBUMIN ELISA  
 RAT ALBUMIN ELISA  
 RAT ALBUMIN, HIGH SENSITIVITY ELISA  
 MOUSE ALBUMIN URINARY (S-TYPE) ASSAY  
 RAT ALBUMIN URINARY (S-TYPE) ASSAY  
 RAT ALPHA-1-ACID GLYCOPROTEIN ELISA  
 ANDROSTENEDIONE ELISA  
 MOUSE/RAT ANGIOPOIETIN-LIKE PROTEIN 3 ELISA  
 MOUSE ANTI-dsDNA ELISA  
 RAT ANTI-KLH IgG ELISA  
 RAT ANTI-KLH IgM ELISA  
 MOUSE ANTI-OVA-IgE ELISA  
 MOUSE ANTI-OVA-IgG1 ELISA  
 MOUSE ANTI-ssDNA ELISA

**B** RAT BETA2-MICROGLOBULIN ELISA8

**C** MOUSE CASPASE-1 ELISA  
 MOUSE sCD40L ELISA  
 RAT CINC-1 ELISA  
 CANINE CLUSTERIN ELISA  
 RAT CLUSTERIN ELISA  
 MOUSE/RAT CORTICOSTERONE ELISA  
 MOUSE/RAT CORTICOTROPIN RELEASING FACTOR ELISA, SENSITIVE, EXTRACTION-FREE  
 MOUSE C-PEPTIDE (U-TYPE) ELISA  
 RAT C-PEPTIDE (U-TYPE) ELISA  
 CANINE C-REACTIVE PROTEIN ELISA, HIGH SENSITIVITY  
 MOUSE C-REACTIVE PROTEIN ELISA, HIGH SENSITIVITY  
 RAT C-REACTIVE PROTEIN ELISA, HIGH SENSITIVITY  
 CANINE CYSTATIN C ELISA  
 MOUSE CYSTATIN C ELISA  
 MOUSE CYSTATIN C PENTASET  
 RAT CYSTATIN C ELISA  
 RAT CYSTATIN C PENTASET

**D** DEHYDROEPIANDROSTERONE ELISA  
 DEHYDROEPIANDROSTERONE FREE IN SALIVA ELISA

**E** MOUSE EOTAXIN ELISA  
 RAT ESTRADIOL ELISA  
 ESTRADIOL FREE IN SALIVA ELISA

**F** RAT FERRITIN ELISA  
 MOUSE/RAT FIBROBLAST GROWTH FACTOR-21 ELISA

**G** CANINE GHRELIN ACYLATED EASY SAMPLING ELISA  
 HUMAN GHRELIN ACYLATED ELISA

PORCINE GHRELIN ACYLATED ELISA  
 RAT GHRELIN ACYLATED ELISA  
 HUMAN GHRELIN UNACYLATED EASY SAMPLING ELISA  
 PORCINE GHRELIN UNACYLATED ELISA  
 RAT GHRELIN UNACYLATED ELISA  
 RAT GLICENTIN ELISA  
 HUMAN GLUCAGON ELISA (MULTISPECIES SPECIFICITY)  
 HUMAN GLUCAGON-LIKE PEPTIDE-1 ELISA (MULTISPECIES SPECIFICITY)  
 MOUSE/RAT GLUCAGON-LIKE PEPTIDE-1 (ACTIVE) ELISA  
 HUMAN GLUCAGON-LIKE PEPTIDE-2 ELISA  
 MOUSE GLUCAGON-LIKE PEPTIDE-2 ELISA  
 MOUSE GM-CSF ELISA  
 RAT GM-CSF ELISA  
 RAT GROWTH HORMONE ELISA  
 RAT GROWTH HORMONE (GH) ELISA

**H** RAT HEMOGLOBIN ELISA

**I** MONKEY sICAM-1 ELISA  
 PORCINE IFN-ALPHA 1 ELISA  
 MOUSE IFN-GAMMA ELISA  
 PIG IFN-GAMMA ELISA  
 RAT IFN-GAMMA ELISA  
 MOUSE/RAT IGFBP-2 ELISA  
 MOUSE/RAT IGFBP-3 ELISA  
 MOUSE IMMUNOGLOBULIN E ELISA  
 RAT IMMUNOGLOBULIN E ELISA  
 CANINE INSULIN ELISA  
 HUMAN INSULIN ELISA (MULTISPECIES SPECIFICITY)  
 MOUSE INSULIN ELISA, HIGH SENSITIVE  
 MOUSE/RAT INSULIN ELISA  
 RAT INSULIN ELISA  
 RAT INSULIN ELISA, HIGH SENSITIVE  
 MOUSE INSULIN (S-TYPE) ELISA  
 MOUSE INSULIN ELISA, ULTRA SENSITIVE  
 RAT INSULIN ELISA, ULTRA SENSITIVE  
 MOUSE INSULIN ELISA, WIDE RANGE  
 RAT INSULIN ELISA, WIDE RANGE  
 PORCINE INSULIN ELISA  
 MOUSE INTERLEUKIN-1 ALPHA ELISA  
 RAT INTERLEUKIN-1 ALPHA ELISA  
 MONKEY INTERLEUKIN-1 BETA ELISA  
 MOUSE INTERLEUKIN-1 BETA ELISA  
 RAT INTERLEUKIN-1 BETA ELISA  
 MONKEY INTERLEUKIN-2 ELISA  
 MOUSE INTERLEUKIN-2 ELISA  
 RAT INTERLEUKIN-2 ELISA  
 MOUSE INTERLEUKIN-4 ELISA  
 RAT INTERLEUKIN-4 ELISA  
 MOUSE INTERLEUKIN-5 ELISA  
 MONKEY INTERLEUKIN-6 ELISA  
 MOUSE INTERLEUKIN-6 ELISA  
 PORCINE INTERLEUKIN-6 ELISA  
 RAT INTERLEUKIN-6 ELISA  
 MONKEY INTERLEUKIN-8 ELISA  
 MONKEY INTERLEUKIN-10 ELISA  
 MOUSE INTERLEUKIN-10 ELISA  
 PORCINE INTERLEUKIN-10 ELISA  
 RAT INTERLEUKIN-10 ELISA

# IMMUNOASSAYS INDEX

MONKEY INTERLEUKIN-12 (p70) ELISA  
 MOUSE INTERLEUKIN-12 (p70) ELISA  
 MOUSE INTERLEUKIN-12 TOTAL (p40 + p70) ELISA  
 MOUSE INTERLEUKIN-13 ELISA  
 MOUSE INTERLEUKIN-15/INTERLEUKIN-15 RECEPTOR ELISA  
 RAT INTERLEUKIN-17A ELISA  
 MOUSE INTERLEUKIN-17 ELISA  
 MOUSE INTERLEUKIN-17F ELISA  
 MOUSE INTERLEUKIN-18 ELISA  
 PIG INTERLEUKIN-18 ELISA  
 MOUSE INTERLEUKIN-22 ELISA  
 MOUSE INTERLEUKIN-23 ELISA  
 MOUSE IP-10 ELISA

**L** MOUSE/RAT LEPTIN ELISA  
 MOUSE LEPTIN PENTASET  
 RAT LEPTIN PENTASET  
 RAT LH ELISA (S-TYPE) ELISA, HIGH SENSITIVITY

**O** MOUSE/RAT OBESTATIN ELISA

**P** MONKEY sPECAM-1 ELISA  
 MOUSE/RAT PROGESTERONE ELISA  
 CANINE PROLACTIN ELISA  
 MOUSE PROLACTIN ELISA  
 RAT PROLACTIN ELISA  
 RAT PYY ELISA

**Q** RAT QUALITY CONTROL SET  
 (CORTICOSTERONE, PROLACTIN, TESTOSTERONE, TSH)

**R** MOUSE/RAT RBP4 ELISA  
 RAT RESISTIN ELISA  
 MOUSE IgG RHEUMATOID FACTOR ELISA  
 MOUSE IgM RHEUMATOID FACTOR ELISA

**S** MONKEY sE-SELECTIN ELISA  
 MONKEY P-SELECTIN ELISA

**T** MOUSE/RAT TESTOSTERONE ELISA  
 MOUSE TGF-BETA1 ELISA  
 RAT TGF-BETA1 ELISA  
 CANINE THYROID STIMULATING HORMONE ELISA  
 CANINE THYROID STIMULATING HORMONE CONTROL SET  
 RAT THYROID STIMULATING HORMONE ELISA  
 MONKEY TNF-ALPHA ELISA  
 MOUSE TNF-ALPHA ELISA  
 PORCINE TNF-ALPHA ELISA  
 RAT TNF-ALPHA ELISA  
 MONKEY STNF-R I ELISA  
 RAT TRANSFERRIN ELISA

**U** MOUSE UROCORTIN 2 ELISA  
 MOUSE/RAT UROCORTIN 3 ELISA

**V** MONKEY sVE-CADHERIN ELISA  
 MOUSE VEGF-A ELISA  
 RAT VEGF-C ELISA

MOUSE/RAT VISFATIN (NAMPT) (INTRACELLULAR) ELISA  
 MOUSE/RAT VISFATIN (NAMPT) ELISA

## APOPTOSIS

**A** HUMAN ANNEXIN A1 ELISA  
 HUMAN sAPO-1/Fas ELISA  
 HUMAN APRIL ELISA

**B** HUMAN Bcl-2 ELISA

**C** MOUSE CASPASE-1 ELISA  
 HUMAN CASPASE-8/FLICE ELISA  
 HUMAN CASPASE-9 ELISA  
 HUMAN sCD40 ELISA  
 HUMAN sCD40L ELISA  
 MOUSE sCD40L ELISA  
 HUMAN CYTOCHROME c ELISA

**F** HUMAN sFAS LIGAND ELISA

**G** HUMAN GALECTIN-1 ELISA  
 HUMAN GRANZYME B ELISA

**P** HUMAN PERFORIN ELISA

**S** HUMAN SERGLYCIN ELISA

**T** HUMAN TRAIL ELISA  
 HUMAN TRAIL RECEPTOR 1 (CD261) ELISA  
 HUMAN TRAIL RECEPTOR 2 (CD262) ELISA  
 HUMAN TRAIL RECEPTOR 3 (CD263) ELISA  
 HUMAN TRAIL RECEPTOR 4 (CD264) ELISA

## AUTOIMMUNITY

21-HYDROXYLASE (21-OH) AUTOANTIBOD ELISA  
 HUMAN 2 SCREEN ISLET CELL AUTOANTIBODY ELISA

**A** HUMAN ACETYLCHOLINE RECEPTOR AUTOANTIBODY ELISA  
 HUMAN ANNEXIN A1 ELISA  
 HUMAN ANNEXIN V ELISA  
 HUMAN ANTI-ALPHA-GALACTOSYL IgA ELISA  
 HUMAN ANTI-ALPHA-GALACTOSYL IgG ELISA  
 HUMAN ANTI-ALPHA-GALACTOSYL IgM ELISA  
 HUMAN ANTI-ANNEXIN V ELISA  
 HUMAN ANTI-IFN-ALPHA ELISA  
 HUMAN **ANTI-IgA ISOTYPE IgG ELISA (IVD CE)**

**C** HUMAN sCD40L ELISA  
 HUMAN sCD44STD ELISA  
 HUMAN CYSTATIN B ELISA

**G** HUMAN GAD AUTOANTIBODY ELISA  
 HUMAN GLUCOSE-REGULATED PROTEIN 78 ELISA  
 HUMAN GRP-78 ELISA

**I** HUMAN IA-2 AUTOANTIBODY ELISA

# IMMUNOASSAYS INDEX

	PORCINE	IFN-GAMMA 1 ELISA
	HUMAN	<b>IMMUNOGLOBULIN A (SECRETORY) IN STOOL ELISA (IVD CE)</b>
	HUMAN	IMMUNOGLOBULIN FREE LIGHT CHAINS KAPPA AND LAMBDA ELISA
<b>M</b>	HUMAN	MACROPHAGE MIGRATION INHIBITORY FACTOR ELISA
<b>T</b>	HUMAN	TSH RECEPTOR AUTOANTIBODY ELISA 2. GENERATION
	HUMAN	TSH RECEPTOR AUTOANTIBODY ELISA 3. GENERATION
	HUMAN	TSH RECEPTOR AUTOANTIBODY FAST ELISA
<b>S</b>		SECRETORY IgA ELISA

## BLOOD PRESSURE REGULATION AND NO METABOLISM

<b>A</b>		<b>ADMA ELISA (IVD CE)</b> ADMA ELISA, HIGH SENSITIVITY <b>ADMA FAST ELISA (IVD CE)</b> ALDOSTERONE ELISA
	HUMAN/RAT	ANGIOTENSIN II ELISA
	HUMAN	ARGINASE LIVER TYPE ELISA
<b>N</b>	HUMAN/RAT	NO SYNTHASE I ELISA
<b>P</b>	HUMAN	PRORENIN ELISA
<b>R</b>	HUMAN	ACTIVE RENIN ELISA
	HUMAN	RENIN ELISA
<b>S</b>	HUMAN	<b>SDMA ELISA (IVD CE)</b>

## BONE AND CARTILAGE METABOLISM

		1,25OH <sub>2</sub> VITAMIN D ELISA EXTRACTION CARTRIDGES FOR 1,25(OH) <sub>2</sub> VITAMIN D TOTAL ELISA EXTRACTION KIT FOR 1,25(OH) <sub>2</sub> VITAMIN D TOTAL ELISA
	HUMAN	25-OH-VITAMIN-D ELISA
	RAT	<b>25-OH-VITAMIN D ELISA (IVD CE)</b> 25-OH-VITAMIN-D ELISA
<b>A</b>	HUMAN	AGGRECAN (PG) ELISA
<b>C</b>	HUMAN	CALCITONIN (CT) ELISA, HIGH SENSITIVITY
	HUMAN	<b>CARTILAGE OLIGOMERIC MATRIX PROTEIN ELISA (IVD CE)</b>
	HUMAN	COLLAGEN TRIPLE HELIX REPEAT-CONTAINING PROTEIN 1 ELISA
<b>D</b>	HUMAN	DICKKOPF-RELATED PROTEIN 1 ELISA
<b>E</b>	HUMAN	ENPP1 ELISA
	HUMAN	ERYTHROPOIETIN ELISA
<b>F</b>	HUMAN	<b>FETUIN-A (AHSg) ELISA (IVD CE)</b>
	HUMAN	FETUIN-B ELISA
	HUMAN	FOLLISTATIN ELISA

<b>L</b>	HUMAN	LACTOFERRIN ELISA
<b>O</b>	HUMAN	OSTEOCALCIN (OST) ELISA
	HUMAN	OSTEOPONTIN ELISA
	HUMAN	<b>OSTEOPROTEGERIN ELISA (IVD CE)</b>
	HUMAN	OSTEOPROTEGERIN ELISA
<b>P</b>	HUMAN	PERIOSTIN ELISA
	MOUSE	PERIOSTIN ELISA
	HUMAN	PARATHYROID HORMONE (PTH) ELISA
<b>S</b>	HUMAN	sRANKL (TOTAL) ELISA (OSTEOPROTEGERIN LIGAND)
	HUMAN	STANNIOCALCIN 1 ELISA
<b>T</b>	HUMAN	TRAP 5 ASSAY

## CARDIOVASCULAR DISEASE

<b>A</b>	HUMAN	<b>ADIPONECTIN ELISA (IVD CE)</b>
	HUMAN	<b>ADIPONECTIN ELISA, HIGH SENSITIVITY (IVD CE)</b>
	HUMAN	ADIPONECTIN HMW ELISA
	HUMAN	ADIPONECTIN PENTASET
	MOUSE	ADIPONECTIN ELISA
	MOUSE/RAT	ADIPONECTIN HMW ELISA
		<b>ADMA ELISA (IVD CE)</b> ADMA ELISA, HIGH SENSITIVITY <b>ADMA FAST ELISA (IVD CE)</b>
	HUMAN	ALLOGRAFT INFLAMMATORY FACTOR 1 ELISA
	HUMAN	AMINOACYLASE-1 ELISA
	HUMAN	APOLIPOPROTEIN B-48 ELISA
	HUMAN	APOPTOSIS INHIBITOR OF MACROPHAGE ELISA
	RAT	ATRIOPEPTIN ELISA
<b>C</b>	HUMAN	CASPASE-8/FLICE ELISA
	HUMAN	sCD40L ELISA
	MOUSE	sCD40L ELISA
		CRGP AFFINITY SORBENT
	HUMAN	CGRP EIA KIT
	RAT	CGRP EIA KIT
	HUMAN	COLLAGEN TRIPLE HELIX REPEAT-CONTAINING PROTEIN 1 ELISA
	HUMAN	CTRP1 ELISA
	HUMAN	CTRP9 ELISA
	HUMAN	CYCLOPHILIN A ELISA
<b>D</b>	HUMAN	DECORIN ELISA
<b>E</b>	HUMAN	EPIDERMAL FABP ELISA
<b>F</b>	HUMAN	<b>FETUIN-A (AHSg) ELISA (IVD CE)</b>
<b>G</b>	HUMAN	<b>GDF-15/MIC-1 ELISA (IVD CE)</b>
	HUMAN	GLUCOSE-REGULATED PROTEIN 78 ELISA
	HUMAN	GRP-78 ELISA
<b>H</b>	HUMAN	HAPTOGLOBIN ELISA
	HUMAN	HEART FABP (FABP3) ELISA
	HUMAN	HOMOARGININE ELISA

<b>I</b>	HUMAN	INTERLEUKIN-33 ELISA
<b>L</b>	HUMAN	LECITHIN-CHOLESTEROL ACYLTRANSFERASE ELISA
<b>M</b>	HUMAN HUMAN	MATRIX METALLOPROTEINASE-8 ELISA MPO ELISA
<b>O</b>	HUMAN	OSTEOPONTIN ELISA
<b>P</b>	HUMAN HUMAN HUMAN HUMAN HUMAN HUMAN MOUSE HUMAN HUMAN HUMAN HUMAN	PARAOXONASE 1 ELISA PCSK9 ELISA PENTRAXIN 3 ELISA PENTRAXIN 3 ELISA PERIOSTIN ELISA PERIOSTIN ELISA ACTIVE RENIN ELISA RENIN ELISA S100P ELISA TROPONIN I ELISA

## CELL ADHESION PROTEINS

<b>C</b>	HUMAN HUMAN HUMAN	sCD44STD ELISA sCD44VAR (V5) ELISA sCD44VAR (V6) ELISA
<b>I</b>	HUMAN MONKEY HUMAN HUMAN	sICAM-1 ELISA sICAM-1 ELISA sICAM-2 ELISA sICAM-3 ELISA
<b>P</b>	HUMAN MONKEY HUMAN	sPECAM-1 ELISA sPECAM-1 ELISA sPSGL-1 ELISA
<b>S</b>	HUMAN MONKEY HUMAN HUMAN MONKEY	sE-SELECTIN ELISA sE-SELECTIN ELISA sL-SELECTIN ELISA sP-SELECTIN ELISA P-SELECTIN ELISA
<b>V</b>	HUMAN HUMAN HUMAN MONKEY	sVAP-1 ELISA sVCAM-1 ELISA sVE-CADHERIN ELISA sVE-CADHERIN ELISA

## CELL SURFACE PROTEINS (SCD)

<b>C</b>	HUMAN HUMAN HUMAN HUMAN HUMAN HUMAN HUMAN MOUSE HUMAN HUMAN	CD14 ELISA CD21 ELISA sCD23 ELISA sCD28 ELISA sCD30 ELISA sCD40 ELISA sCD40L ELISA sCD40L ELISA sCD44STD ELISA sCD44VAR (V5) ELISA
----------	--	---

HUMAN	sCD44VAR (V6) ELISA
HUMAN	sCD134 (OX40) ELISA
HUMAN	sCD137/4-1BB ELISA
HUMAN	sCD152/CTLA-4 ELISA

<b>D</b>	HUMAN HUMAN HUMAN HUMAN MOUSE HUMAN	DIPEPTIDYL PEPTIDASE IV (CD26) ELISA INTERLEUKIN-4 RECEPTOR (CD124) ELISA STEM CELL FACTOR RECEPTOR (CD117) ELISA SYNDECAN-1 (CD138) ELISA SYNDECAN-1 (CD138) ELISA THROMBOMODULIN (CD141) ELISA
----------	--	---

## CHRONIC RENAL FAILURE

<b>A</b>	HUMAN HUMAN HUMAN HUMAN MOUSE MOUSE MOUSE MOUSE/RAT	<b>ADIPONECTIN ELISA (IVD CE)</b> <b>ADIPONECTIN ELISA, HIGH SENSITIVITY (IVD CE)</b> ADIPONECTIN HMW ELISA ADIPONECTIN PENTASET ADIPONECTIN ELISA ADIPONECTIN PENTASET ADIPONECTIN HMW ELISA
----------	--	---

## CORONARY ARTERY DISEASE

<b>A</b>	HUMAN HUMAN HUMAN HUMAN MOUSE MOUSE MOUSE/RAT	<b>ADIPONECTIN ELISA (IVD CE)</b> <b>ADIPONECTIN ELISA, HIGH SENSITIVITY (IVD CE)</b> ADIPONECTIN HMW ELISA ADIPONECTIN PENTASET ADIPONECTIN ELISA ADIPONECTIN PENTASET ADIPONECTIN HMW ELISA
<b>C</b>	HUMAN	COLLAGEN TRIPLE HELIX REPEAT-CONTAINING PROTEIN 1 ELISA

## CYTOKINES AND CHEMOKINES AND RELATED MOLECULES

<b>A</b>	HUMAN HUMAN	ANTI-IFN-ALPHA ELISA APRIL ELISA
<b>C</b>	HUMAN MOUSE RAT	sCD40L ELISA sCD40L ELISA CINC-1 ELISA
<b>G</b>	HUMAN MOUSE RAT HUMAN	GM-CSF ELISA GM-CSF ELISA GM-CSF ELISA GM-CSF RECEPTOR $\alpha$ CHAIN (CD116) ELISA
<b>I</b>	HUMAN PORCINE HUMAN HUMAN MOUSE PIG RAT HUMAN HUMAN	IFN-ALPHA ELISA IFN-ALPHA 1 ELISA IFN-GAMMA ELISA IFN-GAMMA ELISA, HIGH SENSITIVITY IFN-GAMMA ELISA IFN-GAMMA ELISA IFN-GAMMA ELISA IFN-OMEGA ELISA IL-1RACP / IL-1R3 ELISA INTERLEUKIN-1 ALPHA ELISA

MOUSE	INTERLEUKIN-1 ALPHA ELISA
RAT	INTERLEUKIN-1 ALPHA ELISA
HUMAN	INTERLEUKIN-1RA ELISA
HUMAN	INTERLEUKIN-1 BETA ELISA
MONKEY	INTERLEUKIN-1 BETA ELISA
MOUSE	INTERLEUKIN-1 BETA ELISA
RAT	INTERLEUKIN-1 BETA ELISA
HUMAN	INTERLEUKIN-2 ELISA
HUMAN	INTERLEUKIN-2 ELISA, HIGH SENSITIVITY
MONKEY	INTERLEUKIN-2 ELISA
MOUSE	INTERLEUKIN-2 ELISA
RAT	INTERLEUKIN-2 ELISA
HUMAN	sINTERLEUKIN-2 RECEPTOR ELISA
HUMAN	INTERLEUKIN-4 ELISA
HUMAN	INTERLEUKIN-4 ELISA, HIGH SENSITIVITY
MOUSE	INTERLEUKIN-4 ELISA
RAT	INTERLEUKIN-4 ELISA
HUMAN	INTERLEUKIN-4 RECEPTOR (CD124) ELISA
HUMAN	INTERLEUKIN-5 ELISA
MOUSE	INTERLEUKIN-5 ELISA
HUMAN	INTERLEUKIN-6 ELISA
HUMAN	INTERLEUKIN-6 ELISA, HIGH SENSITIVITY
MONKEY	INTERLEUKIN-6 ELISA
MOUSE	INTERLEUKIN-6 ELISA
PORCINE	INTERLEUKIN-6 ELISA
RAT	INTERLEUKIN-6 ELISA
HUMAN	INTERLEUKIN-6 BETA (CD130) ELISA
HUMAN	sINTERLEUKIN-6 RECEPTOR ELISA
HUMAN	INTERLEUKIN-7 ELISA
HUMAN	INTERLEUKIN-8 ELISA
MONKEY	INTERLEUKIN-8 ELISA
HUMAN	INTERLEUKIN-9 ELISA
HUMAN	INTERLEUKIN-10 ELISA
HUMAN	INTERLEUKIN-10 ELISA, HIGH SENSITIVITY
MONKEY	INTERLEUKIN-10 ELISA
MOUSE	INTERLEUKIN-10 ELISA
PORCINE	INTERLEUKIN-10 ELISA
RAT	INTERLEUKIN-10 ELISA
HUMAN	INTERLEUKIN-12 (p70) ELISA
HUMAN	INTERLEUKIN-12 ELISA, HIGH SENSITIVITY
MONKEY	INTERLEUKIN-12 (p70) ELISA
MOUSE	INTERLEUKIN-12 (p70) ELISA
MOUSE	INTERLEUKIN-12 TOTAL (p40 + p70) ELISA
HUMAN	INTERLEUKIN-12/INTERLEUKIN-23 p40 ELISA
HUMAN	INTERLEUKIN-13 ELISA
MOUSE	INTERLEUKIN-13 ELISA
HUMAN	INTERLEUKIN-13 RECEPTOR SUBUNIT ALPHA-2 ELISA
HUMAN	INTERLEUKIN-15 ELISA
MOUSE	INTERLEUKIN-15/INTERLEUKIN-15 RECEPTOR ELISA
HUMAN	INTERLEUKIN-17A ELISA
RAT	INTERLEUKIN-17A ELISA
MOUSE	INTERLEUKIN-17 ELISA
HUMAN	INTERLEUKIN-17AF ELISA
HUMAN	INTERLEUKIN-17F ELISA
MOUSE	INTERLEUKIN-17F ELISA
HUMAN	INTERLEUKIN-18 ELISA
MOUSE	INTERLEUKIN-18 ELISA
PIG	INTERLEUKIN-18 ELISA
HUMAN	INTERLEUKIN-21 ELISA
HUMAN	INTERLEUKIN-22 ELISA

MOUSE	INTERLEUKIN-22 ELISA
HUMAN	INTERLEUKIN-23 ELISA
MOUSE	INTERLEUKIN-23 ELISA
HUMAN	INTERLEUKIN-27 ELISA
HUMAN	INTERLEUKIN-29 ELISA
HUMAN	INTERLEUKIN-31 ELISA
HUMAN	INTERLEUKIN-33 ELISA
HUMAN	IP-10 ELISA
MOUSE	IP-10 ELISA

<b>L</b>	HUMAN	LECT2 ELISA
	HUMAN	LIF ELISA

<b>M</b>	HUMAN	MACROPHAGE MIGRATION INHIBITORY FACTOR ELISA
	HUMAN	MICA ELISA
	HUMAN	MONOCYTE CHEMOTACTIC PROTEIN-1 ELISA
	MOUSE	MONOCYTE CHEMOTACTIC PROTEIN-1 ELISA

<b>P</b>	HUMAN	PERIOSTIN ELISA
	MOUSE	PERIOSTIN ELISA

<b>T</b>	HUMAN	TGF-BETA1 ELISA
	MOUSE	TGF-BETA1 ELISA
	RAT	TGF-BETA1 ELISA
	HUMAN	TGF-BETA2 ELISA
	HUMAN	TIE-2 ELISA
	HUMAN	TNF-ALPHA ELISA
	HUMAN	TNF-ALPHA ELISA, HIGH SENSITIVITY
	HUMAN	TNF-ALPHA TOTAL ELISA
	MONKEY	TNF-ALPHA ELISA
	MOUSE	TNF-ALPHA ELISA
	PORCINE	TNF-ALPHA ELISA
	RAT	TNF-ALPHA ELISA
	HUMAN	TNF-BETA ELISA
	HUMAN	sTNF-R (60kDA) ELISA
	HUMAN	sTNF-R (80kDA) ELISA
	MONKEY	sTNF-R I ELISA

<b>V</b>	HUMAN	VEGF-A ELISA
	MOUSE	VEGF-A ELISA
	HUMAN	VEGF-C ELISA
	RAT	VEGF-C ELISA
	HUMAN	sVEGF-R1 ELISA
	HUMAN	VEGF-R1/FLT-1 ELISA
	HUMAN	VEGF-R2/KDR ELISA
	HUMAN	VEGF-R3/FLT-4 ELISA

## DIABETOLOGY

HUMAN	2 SCREEN ISLET CELL AUTOANTIBODY ELISA
-------	--

<b>A</b>	HUMAN	ACETYLCHOLINE RECEPTOR AUTOANTIBODY ELISA
	HUMAN	<b>ADIPOCYTE FABP ELISA (IVD CE)</b>
	MOUSE	ADIPOCYTE FABP ELISA
	HUMAN	<b>ADIPONECTIN ELISA (IVD CE)</b>
	HUMAN	<b>ADIPONECTIN ELISA, HIGH SENSITIVITY (IVD CE)</b>
	HUMAN	ADIPONECTIN HMW ELISA
	HUMAN	ADIPONECTIN PENTASET
	MOUSE	ADIPONECTIN ELISA
	MOUSE	ADIPONECTIN PENTASET

# IMMUNOASSAYS INDEX

	MOUSE/RAT	ADIPONECTIN HMW ELISA
	HUMAN	AFAMIN ELISA
	HUMAN	ANNEXIN V ELISA
	HUMAN	ANTI-ANNEXIN V ELISA
	HUMAN	ANTI-IFN-ALPHA ELISA
	HUMAN	ANTI-IgA IgG ELISA
	HUMAN	APOLIPOPROTEIN M ELISA
<b>B</b>	HUMAN	BETATROPHIN ELISA
	MOUSE	BETATROPHIN ELISA
<b>C</b>	HUMAN	C-PEPTIDE ELISA
	MOUSE	C-PEPTIDE (U-TYPE) ELISA
	RAT	C-PEPTIDE (U-TYPE) ELISA
	HUMAN	sCD26 ELISA
	HUMAN	sCD44STD ELISA
<b>D</b>	HUMAN	DsbA-L ELISA
<b>E</b>	HUMAN	ENPP1 ELISA
<b>G</b>	HUMAN	GANGLIOSIDE GM2 ACTIVATOR ELISA
	CANINE	GHRELIN ACYLATED EASY SAMPLING ELISA
	HUMAN	GHRELIN ACYLATED ELISA
	PORCINE	GHRELIN ACYLATED ELISA
	HUMAN	GHRELIN EASY SAMPLING ELISA
	MOUSE/RAT	GHRELIN EASY SAMPLING ELISA
	HUMAN	GHRELIN UNACYLATED EASY SAMPLING ELISA
	PORCINE	GHRELIN UNACYLATED ELISA
	HUMAN	GLUCAGON ELISA (MULTISPECIES SPECIFICITY)
	HUMAN	GLUCAGON-LIKE PEPTIDE-1 ELISA (MULTISPECIES SPECIFICITY)
	MOUSE/RAT	GLUCAGON-LIKE PEPTIDE-1 (ACTIVE) ELISA
	HUMAN	GLUCAGON-LIKE PEPTIDE-2 ELISA
	MOUSE	GLUCAGON-LIKE PEPTIDE-2 ELISA
	RAT	GLUCAGON-LIKE PEPTIDE-2 ELISA
<b>H</b>	HUMAN	HAPTOGLOBIN ELISA
<b>I</b>	HUMAN	IA-2 AUTOANTIBODY ELISA
	HUMAN	<b>IMMUNOGLOBULIN A (SECRETORY) IN STOOL ELISA (IVD CE)</b>
	MOUSE	IMMUNOGLOBULIN E ELISA
	RAT	IMMUNOGLOBULIN E ELISA
	HUMAN	IMMUNOGLOBULIN FREE LIGHT CHAINS ELISA
	CANINE	INSULIN ELISA
	HAMSTER	INSULIN STANDARD ELISA
	HUMAN	INSULIN ELISA
	HUMAN	INSULIN ELISA (MULTISPECIES SPECIFICITY)
	MOUSE/RAT	INSULIN ELISA
	MOUSE	INSULIN ELISA, HIGH SENSITIVE
	MOUSE	INSULIN ELISA, ULTRA SENSITIVE
	MOUSE	INSULIN ELISA, WIDE RANGE
	MOUSE	INSULIN (RTU) ELISA
	MOUSE	INSULIN (S-TYPE) ELISA
	PORCINE	INSULIN ELISA
	RAT	INSULIN ELISA
	RAT	INSULIN ELISA, HIGH SENSITIVE
	RAT	INSULIN ELISA, ULTRA SENSITIVE
	RAT	INSULIN ELISA, WIDE RANGE

<b>L</b>	HUMAN	LECT2 ELISA
	HUMAN	LEPTIN PENTASET
	MOUSE	LEPTIN PENTASET
	RAT	LEPTIN PENTASET
<b>O</b>	HUMAN	OMENTIN-1 ELISA
	HUMAN	OSTEOPONTIN ELISA
<b>P</b>	HUMAN	PCSK9 ELISA
	HUMAN	<b>PROINSULIN INTACT ELISA (IVD CE)</b>
	HUMAN	PRORENIN ELISA
	HUMAN	TOTAL PRORENIN/RENIN ELISA
<b>R</b>	HUMAN	sRAGE ELISA
	HUMAN	RBP4 ELISA
	HUMAN	RBP4 ELISA, HIGH SENSITIVITY
	MOUSE/RAT	RBP4 ELISA
	HUMAN	ACTIVE RENIN ELISA
	HUMAN	RENIN ELISA
<b>S</b>	HUMAN	SECRETAGOGIN ELISA
<b>T</b>	HUMAN	TSH RECEPTOR AUTOANTIBODY ELISA 2. GENERATION
<b>V</b>	HUMAN	VASPIN ELISA

## ENERGY METABOLISM AND BODY WEIGHT REGULATION

<b>A</b>	HUMAN	<b>ADIPOCYTE FABP ELISA (IVD CE)</b>
	MOUSE	ADIPOCYTE FABP ELISA
	HUMAN	<b>ADIPONECTIN ELISA (IVD CE)</b>
	HUMAN	<b>ADIPONECTIN ELISA, HIGH SENSITIVITY (IVD CE)</b>
	HUMAN	ADIPONECTIN HMW ELISA
	HUMAN	ADIPONECTIN PENTASET
	MOUSE	ADIPONECTIN ELISA
	MOUSE	ADIPONECTIN PENTASET
	MOUSE/RAT	ADIPONECTIN HMW ELISA
	HUMAN	AFAMIN ELISA
	HUMAN	ANGIPOIETIN-LIKE PROTEIN 3 ELISA
	MOUSE/RAT	ANGIPOIETIN-LIKE PROTEIN 3 ELISA
	HUMAN	ANGIPOIETIN-LIKE PROTEIN 4 ELISA
	HUMAN	ANGIPOIETIN-LIKE PROTEIN 6 ELISA
	HUMAN	APOLIPOPROTEIN D ELISA
	HUMAN	APOLIPOPROTEIN M ELISA
	HUMAN	APOPTOSIS INHIBITOR OF MACROPHAGE ELISA
<b>B</b>	HUMAN	BETATROPHIN ELISA
	MOUSE	BETATROPHIN ELISA
<b>C</b>	HUMAN	COLLAGEN TRIPLE HELIX REPEAT-CONTAINING PROTEIN 1 ELISA
	HUMAN	CTR1 ELISA
	HUMAN	CTR5 ELISA
	HUMAN	CTR9 ELISA
	HUMAN	CHEMERIN ELISA
<b>D</b>	HUMAN	DECORIN ELISA
	HUMAN	DsbA-L ELISA
<b>E</b>	HUMAN	ENPP1 ELISA



<b>F</b>	HUMAN	FETUIN-B ELISA	<b>N</b>	HUMAN	NEFATIN-1 ELISA		
	HUMAN	FIBROBLAST GROWTH FACTOR-19 ELISA		HUMAN	NEUDESIN ELISA		
	HUMAN	FIBROBLAST GROWTH FACTOR-21 ELISA		<b>O</b>	MOUSE/RAT	OBESTATIN ELISA	
	MOUSE/RAT	FIBROBLAST GROWTH FACTOR-21 ELISA			HUMAN	OMENTIN-1 ELISA	
<b>G</b>	HUMAN	GANGLIOSIDE GM2 ACTIVATOR ELISA	HUMAN	OSTEOPONTIN ELISA			
	CANINE	GHRELIN ACYLATED EASY SAMPLING ELISA	<b>P</b>	HUMAN	PARAOXONASE 1 ELISA		
	HUMAN	GHRELIN ACYLATED ELISA		HUMAN	PEDF ELISA		
	PORCINE	GHRELIN ACYLATED ELISA		HUMAN	PREF-1 ELISA		
	HUMAN	GHRELIN EASY SAMPLING ELISA		HUMAN	PROGRANULIN ELISA		
	MOUSE/RAT	GHRELIN EASY SAMPLING ELISA		MOUSE	PROGRANULIN ELISA		
	RAT	GHRELIN ACYLATED ELISA		RAT	PROGRANULIN ELISA		
	HUMAN	GHRELIN UNACYLATED EASY SAMPLING ELISA		HUMAN	<b>PROINSULIN INTACT ELISA (IVD CE)</b>		
	HUMAN	GHRELIN UNACYLATED ELISA		HUMAN	PYY ELISA		
	PORCINE	GHRELIN UNACYLATED ELISA		HUMAN	PYY ELISA		
	RAT	GHRELIN UNACYLATED ELISA		RAT			
	HUMAN	GLUCAGON-LIKE PEPTIDE-1 ELISA (MULTISPECIES SPECIFICITY)		<b>R</b>	HUMAN	RBP4 ELISA	
	MOUSE/RAT	GLUCAGON-LIKE PEPTIDE-1 (ACTIVE) ELISA			HUMAN	RBP4 ELISA, HIGH SENSITIVITY	
	HUMAN	GRP-78 ELISA			MOUSE/RAT	RBP4 ELISA	
<b>H</b>	HUMAN	HEART FABP (FABP3) ELISA		HUMAN	<b>RESISTIN ELISA (IVD CE)</b>		
			RAT	RESISTIN ELISA			
<b>I</b>	HUMAN	IL-1RACP / IL-1R3 ELISA	<b>S</b>	HUMAN	SYNUCLEIN GAMMA ELISA		
	CANINE	INSULIN ELISA		<b>T</b>	HUMAN	TNF-ALPHA ELISA	
	HAMSTER	INSULIN STANDARD ELISA			HUMAN	TNF-ALPHA ELISA, HIGH SENSITIVITY	
	HUMAN	INSULIN ELISA			HUMAN	TNF-ALPHA TOTAL ELISA	
	HUMAN	INSULIN ELISA (MULTISPECIES SPECIFICITY)			MONKEY	TNF-ALPHA ELISA	
	MOUSE/RAT	INSULIN ELISA			MOUSE	TNF-ALPHA ELISA	
	MOUSE	INSULIN ELISA, HIGH SENSITIVE			PORCINE	TNF-ALPHA ELISA	
	MOUSE	INSULIN ELISA, ULTRA SENSITIVE			RAT	TNF-ALPHA ELISA	
	MOUSE	INSULIN ELISA, WIDE RANGE			HUMAN	TREFOIL FACTOR 1 ELISA	
	MOUSE	INSULIN (RTU) ELISA			HUMAN	TREFOIL FACTOR 2 ELISA	
	MOUSE	INSULIN (S-TYPE) ELISA			RAT	TREFOIL FACTOR 3 ELISA	
	PORCINE	INSULIN ELISA			<b>V</b>	HUMAN	VASPIN ELISA
	RAT	INSULIN ELISA				HUMAN	VISFATIN (NAMPT) (INTRACELLULAR) ELISA
	RAT	INSULIN ELISA, HIGH SENSITIVE			MOUSE/RAT	VISFATIN (NAMPT) (INTRACELLULAR) ELISA	
	RAT	INSULIN ELISA, ULTRA SENSITIVE			HUMAN	VISFATIN (NAMPT) ELISA	
	RAT	INSULIN ELISA, WIDE RANGE			MOUSE/RAT	VISFATIN (NAMPT) ELISA	
	HUMAN	INTERLEUKIN-6 ELISA			<b>Z</b>	HUMAN	ZINC-ALPHA-2-GLYCOPROTEIN ELISA
	HUMAN	INTERLEUKIN-6 ELISA, HIGH SENSITIVITY					
	MONKEY	INTERLEUKIN-6 ELISA					
	MOUSE	INTERLEUKIN-6 ELISA					
	PORCINE	INTERLEUKIN-6 ELISA					
RAT	INTERLEUKIN-6 ELISA						
HUMAN	INTERLEUKIN-33 ELISA						
	IRISIN ELISA						
<b>L</b>	HUMAN	LECT2 ELISA					
	HUMAN	<b>LEPTIN ELISA (IVD CE)</b>					
	HUMAN	LEPTIN PENTASET					
	HUMAN	LEPTIN RECEPTOR ELISA					
	MOUSE/RAT	LEPTIN ELISA					
	MOUSE	LEPTIN PENTASET					
	RAT	LEPTIN PENTASET					
HUMAN	LIPOCALIN-2/NGAL ELISA						
<b>M</b>	HUMAN	MONOCYTE CHEMOTACTIC PROTEIN-1 ELISA					
	MOUSE	MONOCYTE CHEMOTACTIC PROTEIN-1 ELISA					

## GROWTH HORMONE AND FACTOR-RELATED PRODUCTS

<b>A</b>	HUMAN	ALS ELISA
<b>G</b>	HUMAN	GROWTH HORMONE ELISA
	HUMAN	<b>GROWTH HORMONE SENSITIVE ELISA (IVD CE)</b>
	RAT	GROWTH HORMONE ELISA
	RAT	GROWTH HORMONE (GH) ELISA
<b>I</b>	HUMAN	IGF-1 ELISA
	HUMAN	<b>IGF-1 ELISA (IVD CE)</b>
	MOUSE/RAT	IGF-1 ELISA
	HUMAN	<b>IGF-2 ELISA (IVD CE)</b>
	HUMAN	IGFBP-1 ELISA
	HUMAN	<b>IGFBP-1 ELISA (IVD CE)</b>
	HUMAN	IGFBP-2 ELISA

MOUSE/RAT	IGFBP-2 ELISA
HUMAN	IGFBP-3 FUNCTIONAL ELISA
HUMAN	<b>IGFBP-3 TOTAL ELISA (IVD CE)</b>
MOUSE/RAT	IGFBP-3 ELISA

## IMMUNE RESPONSE, INFECTION AND INFLAMMATION

HUMAN	s90K/Mac-2BP ELISA
<b>A</b>	HUMAN ALLOGRAFT INFLAMMATORY FACTOR 1 ELISA
HUMAN	<b>ALPHA-1-ANTITRYPSIN IN STOOL ELISA (IVD CE)</b>
RAT	ALPHA-1 ACIDIC-GLYCOPROTEIN ELISA
HUMAN	APOLIPOPROTEIN M ELISA
HUMAN	APOPTOSIS INHIBITOR OF MACROPHAGE ELISA
HUMAN	ANNEXIN A1 ELISA
HUMAN	ANTI-ALPHA-GALACTOSYL IgA ELISA
HUMAN	ANTI-ALPHA-GALACTOSYL IgE ELISA
HUMAN	ANTI-ALPHA-GALACTOSYL IgG ELISA
HUMAN	ANTI-ALPHA-GALACTOSYL IgM ELISA
HUMAN	ANTI-IFN-ALPHA ELISA
HUMAN	ANTI-IgA IgG ELISA
RAT	ANTI-KLH IgG ELISA
RAT	ANTI-KLH IgM ELISA
HUMAN	AZUROCIDIN/HBP ELISA
<b>C</b>	MOUSE CASPASE-1 ELISA
HUMAN	CASPASE-9 ELISA
HUMAN	sCD44STD ELISA
HUMAN	CHITINASE 3-LIKE 1 ELISA
HUMAN	<b>CLUB CELL PROTEIN (CC16) ELISA (IVD CE)</b>
HUMAN	CORTICOSTEROID-BINDING GLOBULIN ELISA
CANINE	C-REACTIVE PROTEIN ELISA, HIGH SENSITIVITY
HUMAN	<b>C-REACTIVE PROTEIN ELISA (IVD CE)</b>
HUMAN	<b>C-REACTIVE PROTEIN ELISA, HIGH SENSITIVITY (IVD CE)</b>
MOUSE	C-REACTIVE PROTEIN ELISA, HIGH SENSITIVITY
RAT	C-REACTIVE PROTEIN ELISA, HIGH SENSITIVITY
HUMAN	CYCLOPHILIN A ELISA
HUMAN	CYTOCHROME c ELISA
<b>E</b>	MOUSE EOTAXIN ELISA
HUMAN	sE-SELECTIN ELISA
MONKEY	sE-SELECTIN ELISA
<b>F</b>	HUMAN FETUIN-B ELISA
HUMAN	FOLLISTATIN ELISA
<b>G</b>	HUMAN GALECTIN-1 ELISA
HUMAN	GALECTIN-3 ELISA
HUMAN	GASTROKINE-1 ELISA
HUMAN	GLUCOSE-REGULATED PROTEIN 78 ELISA
HUMAN	GRANULYSIN ELISA
HUMAN	GRANZYME B ELISA
HUMAN	HAPTOGLOBIN ELISA
<b>I</b>	HUMAN IL-1RACP / IL-1R3 ELISA
HUMAN	<b>IMMUNOGLOBULIN A (SECRETORY) IN STOOL ELISA (IVD CE)</b>
HUMAN	INTERLEUKIN-1 BETA ELISA
HUMAN	INTERLEUKIN-8 ELISA
HUMAN	IP-10 ELISA
MOUSE	IP-10 ELISA

<b>K</b>	HUMAN KL-6 ELISA
<b>L</b>	HUMAN LACTOFERRIN ELISA
<b>M</b>	HUMAN MATRIX METALLOPROTEINASE-7 (MMP-7) ELISA
HUMAN	MATRIX METALLOPROTEINASE-8 ELISA
HUMAN	MPO ELISA
HUMAN	MxA PROTEIN ELISA
<b>O</b>	HUMAN OSTEOPOINTIN ELISA
<b>P</b>	HUMAN PENTRAXIN 3 ELISA
HUMAN	<b>PMN ELASTASE ELISA (IVD CE)</b>
CANINE	PROCALCITONIN ELISA
HUMAN	<b>PROCALCITONIN ELISA (IVD CE)</b>
HUMAN	PROTEINASE 3 (PR3) ELISA
MOUSE	PROTEINASE 3 (PR3) ELISA
<b>S</b>	HUMAN S100A6 ELISA (MULTISPECIES SPECIFICITY)
HUMAN	S100A8 ELISA
HUMAN	S100A8/A9 ELISA
HUMAN	S100A8/A9 ELISA
HUMAN	S100A12 ELISA
HUMAN	SECRETOGLOBIN 3A2 ELISA
HUMAN	SECRETORY IgA ELISA
HUMAN	SERGLYCIN ELISA
HUMAN	suPAR ELISA
HUMAN	SURFACTANT PROTEIN A ELISA
HUMAN	<b>SURFACTANT PROTEIN D ELISA (IVD CE)</b>
<b>T</b>	HUMAN TREFOIL FACTOR 1 ELISA
HUMAN	TREFOIL FACTOR 2 ELISA
<b>U</b>	HUMAN URINARY TRYPSIN INHIBITOR ELISA

## IMMUNOLOGY

<b>A</b>	HUMAN ANTI-ALPHA-GALACTOSYL IgA ELISA
HUMAN	ANTI-ALPHA-GALACTOSYL IgE ELISA
HUMAN	ANTI-ALPHA-GALACTOSYL IgG ELISA
HUMAN	ANTI-ALPHA-GALACTOSYL IgM ELISA
<b>C</b>	HUMAN CYCLOPHILIN B ELISA
<b>I</b>	HUMAN INTERLEUKIN-1 BETA ELISA

## INFLAMMATORY BOWEL DISEASE

<b>L</b>	HUMAN LACTOFERRIN ELISA
<b>S</b>	HUMAN S100A8/A9 ELISA
HUMAN	S100A12 ELISA

## IRON METABOLISM

<b>F</b>	HUMAN FERRITIN ELISA
RAT	FERRITIN ELISA
<b>L</b>	HUMAN LACTOFERRIN ELISA

**T** HUMAN **sTfR ELISA (IVD CE)**  
RAT TRANSFERRIN ELISA

## LIPOPROTEIN METABOLISM

**A** HUMAN APOLIPOPROTEIN B-48 ELISA  
HUMAN APOLIPOPROTEIN D ELISA  
HUMAN APOLIPOPROTEIN M ELISA

**B** HUMAN BETATROPHIN ELISA  
MOUSE BETATROPHIN ELISA

**I** HUMAN INSL5/INSL7 HYBRID

**L** HUMAN LECITHIN-CHOLESTEROL ACYLTRANSFERASE ELISA

**P** HUMAN PAF-AH  
HUMAN PARAOXONASE 1 ELISA  
HUMAN PCSK9 ELISA

**R** HUMAN RELAXIN-3

**S** HUMAN S100A12 ELISA

**T** HUMAN TNF- $\alpha$  (*E. coli*-derived)

## METABOLIC SYNDROME

**G** HUMAN GANGLIOSIDE GM2 ACTIVATOR ELISA

## MUSCLE GROWTH CONTROL

**F** HUMAN FOLLISTATIN ELISA

## NEURAL TISSUE DAMAGE MARKERS

**A** HUMAN AMINOACYLASE-1 ELISA

**C** HUMAN CYCLOPHILIN 40 ELISA  
CANINE CYSTATIN C ELISA  
HUMAN **CYSTATIN C ELISA (IVD CE)**  
HUMAN CYSTATIN C PENTASET  
MOUSE CYSTATIN C ELISA  
MOUSE CYSTATIN C PENTASET  
RAT CYSTATIN C ELISA  
RAT CYSTATIN C PENTASET

**G** HUMAN GANGLIOSIDE GM2 ACTIVATOR ELISA  
HUMAN GLIAL FIBRILLARY ACIDIC PROTEIN ELISA

**H** HUMAN HAPTOGLOBIN ELISA

**M** HUMAN MATRIX METALLOPROTEINASE-9 (MMP-9) ELISA

**N** HUMAN NESFATIN-1 ELISA  
HUMAN NEUDESIN ELISA  
HUMAN NEUROSERPIN ELISA

**O** HUMAN OSTEOPONTIN ELISA

**P** HUMAN PHOSPHORYLATED NEUROFILAMENT H ELISA  
HUMAN PROGRANULIN ELISA  
MOUSE PROGRANULIN ELISA  
RAT PROGRANULIN ELISA  
HUMAN PROSTAGLANDIN D SYNTHASE (LIPOCALIN-TYPE) ELISA

**S** HUMAN S100A6 ELISA (MULTISPECIES SPECIFICITY)  
HUMAN S100A12 ELISA  
HUMAN S100B ELISA  
HUMAN SECRETAGOGIN ELISA  
HUMAN SYNUCLEIN GAMMA ELISA

**V** HUMAN VILIP-1 ELISA

## ONCOLOGY

HUMAN s90K/MAC-2BP ELISA

**A** HUMAN ALPHA-FETOPROTEIN ELISA  
RAT ALPHA-1 ACIDIC-GLYCOPROTEIN ELISA  
HUMAN ANNEXIN A1 ELISA  
HUMAN ANTI-ALPHA-GALACTOSYL IgA ELISA  
HUMAN ANTI-ALPHA-GALACTOSYL IgE ELISA  
HUMAN ANTI-ALPHA-GALACTOSYL IgG ELISA  
HUMAN ANTI-ALPHA-GALACTOSYL IgM ELISA

**C** HUMAN CALCITONIN (CT) ELISA, HIGH SENSITIVITY  
HUMAN sCD30 ELISA  
HUMAN sCD40 ELISA  
MOUSE sCD40L ELISA  
HUMAN sCD44STD ELISA  
HUMAN sCD44VAR (V5) ELISA  
HUMAN sCD44VAR (V6) ELISA  
HUMAN CHROMOGRANIN A ELISA  
HUMAN CHROMOGRANIN A ELISA  
HUMAN COLLAGEN TRIPLE HELIX REPEAT-CONTAINING PROTEIN 1 ELISA  
HUMAN CYCLOPHILIN 40 ELISA  
HUMAN CYCLOPHILIN A ELISA  
HUMAN CYCLOPHILIN B ELISA  
HUMAN CYSTATIN B ELISA

**D** HUMAN DECORIN ELISA  
HUMAN DICKKOPF-RELATED PROTEIN 1 ELISA

**E** HUMAN EPIDIDYMIS PROTEIN 4 (HE4) ELISA

**F** HUMAN FETUIN-B ELISA  
HUMAN FIBRONECTIN ELISA  
HUMAN FOLLISTATIN ELISA

**G** HUMAN GALECTIN-1 ELISA  
HUMAN GASTROKINE-1 ELISA  
HUMAN **GDF-15/MIC-1 ELISA (IVD CE)**  
HUMAN GLUCOSE-REGULATED PROTEIN 78 ELISA  
HUMAN GRANULYSIN ELISA

**H** HUMAN sHER-2 ELISA

# IMMUNOASSAYS INDEX

<b>I</b>	HUMAN HUMAN HUMAN HUMAN HUMAN	IL-1RACP / IL-1R3 ELISA IMMUNOGLOBULIN FREE LIGHT CHAINS ELISA INTERLEUKIN-1 BETA ELISA INTERLEUKIN-8 ELISA INTERLEUKIN-33 ELISA
<b>L</b>	HUMAN	LECT2 ELISA
<b>M</b>	HUMAN HUMAN HUMAN HUMAN HUMAN	MACROPHAGE MIGRATION INHIBITORY FACTOR ELISA MATRIX METALLOPROTEINASE-7 (MMP-7) ELISA MATRIX METALLOPROTEINASE-8 ELISA MATRIX METALLOPROTEINASE-9 (MMP-9) ELISA MIDKINE ELISA
<b>N</b>	HUMAN HUMAN HUMAN	NEUDESIN ELISA NEURON SPECIFIC ENOLASE ELISA NEUROSERPIN ELISA
<b>O</b>	HUMAN	OSTEOPONTIN ELISA
<b>P</b>	HUMAN HUMAN HUMAN HUMAN HUMAN HUMAN HUMAN HUMAN HUMAN MOUSE HUMAN	p53 ELISA PREF-1 ELISA PHOSPHORYLATED NEUROFILAMENT H ELISA PROLACTIN-INDUCIBLE PROTEIN ELISA PROLINE-RICH ACIDIC PROTEIN 1 ELISA PROSTATE SECRETORY PROTEIN 94 ELISA PROTEINASE 3 (PR3) ELISA PROTEINASE 3 (PR3) ELISA PYRUVATE KINASE M2 ELISA
<b>S</b>	HUMAN HUMAN HUMAN HUMAN HUMAN HUMAN HUMAN HUMAN HUMAN HUMAN MOUSE HUMAN	S100A6 ELISA (MULTISPECIES SPECIFICITY) S100A8 ELISA S100A12 S100A12 ELISA S100P ELISA SECRETAGOGIN ELISA SECRETOGLOBIN 3A2 ELISA SERGLYCIN ELISA STANNIocalcin 1 ELISA SYNDECAN-1 (CD138) ELISA SYNDECAN-1 (CD138) ELISA SYNUCLEIN GAMMA ELISA TM-CYFRA 21-1 ELISA
<b>T</b>	HUMAN HUMAN HUMAN HUMAN RAT	TRAIL ELISA TREFOIL FACTOR 1 ELISA TREFOIL FACTOR 2 ELISA TREFOIL FACTOR 3 ELISA TREFOIL FACTOR 3 ELISA
<b>U</b>	HUMAN	URINARY TRYPSIN INHIBITOR ELISA
<b>V</b>	HUMAN	VILIP-1 ELISA
<b>Z</b>	HUMAN	ZINC-ALPHA-2-GLYCOPROTEIN ELISA

## OTHERS

<b>A</b>	ALPHA-AMYLASE SALIVA ELISA
----------	----------------------------

<b>C</b>	HUMAN CANINE HUMAN RAT HUMAN RAT	CATHEPSIN L ELISA CLUSTERIN ELISA CLUSTERIN ELISA CLUSTERIN ELISA CGRP EIA KIT CGRP EIA KIT CGRP AFFINITY SORBENT CYSTICERCOSIS AG ELISA
<b>H</b>	MULTISPECIES HUMAN	HISTAMINE ELISA HUMANIN ELISA, HIGH SENSITIVITY
<b>I</b>	HUMAN	INTESTINAL FABP (FABP2) ELISA
<b>M</b>	HUMAN HUMAN HUMAN HUMAN	MATRIX METALLOPROTEINASE-7 (MMP-7) ELISA MATRIX METALLOPROTEINASE-8 ELISA MATRIX METALLOPROTEINASE-9 ELISA MATRIX METALLOPROTEINASE-9 (MMP-9) ELISA
<b>P</b>	HUMAN HUMAN HUMAN HUMAN HUMAN HUMAN HUMAN	PAI-1 ELISA PARAOXONASE 1 ELISA PEDF ELISA PEPSINOGEN I ELISA PEPSINOGEN II ELISA PROGUANYLIN ELISA PROUROGUANYLIN ELISA
<b>S</b>	HUMAN HUMAN HUMAN HUMAN HUMAN HUMAN HUMAN	S100A6 ELISA (MULTISPECIES SPECIFICITY) S100A8/A9 ELISA S100A8/A9 ELISA S100A11 ELISA (MULTISPECIES SPECIFICITY) S100A12 S100G ELISA
<b>T</b>	HUMAN HUMAN HUMAN HUMAN HUMAN HUMAN HUMAN	THYROXINE, FREE (FT4) ELISA THYROXINE, TOTAL (T4) ELISA TIMP-1 ELISA TRIIODOTHYRONINE, FREE (FT3) ELISA TRIIODOTHYRONINE, TOTAL (T3) ELISA REVERSE T3 (RT3) ELISA t-PA ELISA
<b>Z</b>	HUMAN	ZYMOGEN GRANULE MEMBRANE PROTEIN 16 ELISA

## OXIDATIVE STRESS

	HUMAN HUMAN	8-OHdG CHECK ELISA (MULTISPECIES SPECIFICITY) 8-OHdG CHECK (ULTRASENSITIVE) ELISA (MULTISPECIES SPECIFICITY)
<b>C</b>	HUMAN HUMAN	Cu/Zn SUPEROXIDE DISMUTASE ELISA CYTOCHROME c ELISA
<b>D</b>		DHN-MA ELISA
<b>G</b>	HUMAN	GLUTATHIONE PEROXIDASE 1 ELISA
<b>H</b>	HUMAN	HAPTOGLOBIN ELISA

# IMMUNOASSAYS INDEX

<b>P</b>	HUMAN HUMAN	PEROXIREDOXIN 1 ELISA PEROXIREDOXIN 3 ELISA
<b>S</b>	HUMAN HUMAN HUMAN	SUPEROXIDE DISMUTASE 1 ELISA SUPEROXIDE DISMUTASE 2 ELISA SUPEROXIDE DISMUTASE 3 ELISA
<b>T</b>	HUMAN HUMAN	THIOREDOXIN 1 ELISA THIOREDOXIN REDUCTASE 1 ELISA

## PULMONARY DISEASE

<b>C</b>	HUMAN	<b>CLUB CELL PROTEIN (CC16) ELISA (IVD CE)</b>
<b>K</b>	HUMAN	KL-6 ELISA
<b>M</b>	HUMAN	MATRIX METALLOPROTEINASE-8 ELISA
<b>P</b>	HUMAN	PMN ELASTASE ELISA
<b>S</b>	HUMAN HUMAN HUMAN HUMAN HUMAN	S100A8 ELISA S100A12 ELISA SECRETOGLOBIN 3A2 ELISA SURFACTANT PROTEIN A ELISA SURFACTANT PROTEIN D ELISA
<b>T</b>	HUMAN HUMAN HUMAN	TREFOIL FACTOR 1 ELISA TREFOIL FACTOR 2 ELISA TREFOIL FACTOR 3 ELISA

## RENAL DISEASE

<b>A</b>	BOVINE MOUSE RAT RAT MOUSE RAT HUMAN HUMAN HUMAN/RAT HUMAN	ALBUMIN ELISA ALBUMIN ELISA ALBUMIN ELISA ALBUMIN, HIGH SENSITIVITY ELISA ALBUMIN URINARY (S-TYPE) ASSAY ALBUMIN URINARY (S-TYPE) ASSAY AMINOACYLASE-1 ELISA ANGIOTENSINOGEN ELISA ANGIOTENSIN II ELISA APOPTOSIS INHIBITOR OF MACROPHAGE ELISA
<b>B</b>	HUMAN RAT	BETA2-MICROGLOBULIN ELISA BETA2-MICROGLOBULIN ELISA
<b>C</b>	CANINE HUMAN RAT CANINE HUMAN HUMAN MOUSE MOUSE RAT RAT	CLUSTERIN ELISA CLUSTERIN ELISA CLUSTERIN ELISA CYSTATIN C ELISA <b>CYSTATIN C ELISA (IVD CE)</b> CYSTATIN C PENTASET CYSTATIN C ELISA CYSTATIN C PENTASET CYSTATIN C ELISA CYSTATIN C PENTASET
<b>E</b>	HUMAN	ERYTHROPOIETIN ELISA

<b>F</b>	HUMAN	<b>FETUIN-A (AHSB) ELISA (IVD CE)</b>
<b>H</b>	HUMAN HUMAN	HAPTOGLOBIN ELISA HEART FABP (FABP3) ELISA
<b>K</b>	HUMAN RAT	KIM-1 ELISA KIM-1 ELISA
<b>L</b>	HUMAN	LIPOCALIN-2/NGAL ELISA
<b>O</b>	HUMAN	OSTEOPONTIN ELISA
<b>P</b>	HUMAN HUMAN HUMAN HUMAN HUMAN	PROGUANYLIN ELISA PRORENIN ELISA TOTAL PRORENIN/RENIN ELISA PROSTAGLANDIN D SYNTHASE (LIPOCALIN-TYPE) ELISA PROUROGUANYLIN ELISA
<b>R</b>	HUMAN HUMAN HUMAN	ACTIVE RENIN ELISA RENIN ELISA sRAGE ELISA
<b>S</b>	HUMAN HUMAN	S100A12 ELISA suPAR ELISA
<b>T</b>	HUMAN RAT	TREFOIL FACTOR 3 ELISA TREFOIL FACTOR 3 ELISA
<b>U</b>	HUMAN CANINE HUMAN	URINARY TRYPSIN INHIBITOR ELISA UROMODULIN ELISA <b>UROMODULIN ELISA (IVD CE)</b>

## REPRODUCTION

<b>A</b>	HUMAN	AMINOACYLASE-1 ELISA
<b>C</b>	HUMAN	CYSTEINE-RICH SECRETORY PROTEIN 1 ELISA
<b>F</b>	HUMAN HUMAN	FOLLISTATIN ELISA FSH ELISA
<b>G</b>	HUMAN  HUMAN HUMAN	<b>GDF-15/MIC-1 ELISA (IVD CE)</b> sHLA-G ELISA CHORIONIC GONADOTROPIN (HCG) ELISA BETA-CHORIONIC GONADOTROPIN (BETA-HCG), FREE ELISA
<b>I</b>	HUMAN	IL-1RACP / IL-1R3 ELISA
<b>P</b>	HUMAN HUMAN	PROLACTIN-INDUCIBLE PROTEIN ELISA PROLINE-RICH ACIDIC PROTEIN 1 ELISA
<b>L</b>	HUMAN HUMAN HUMAN MOUSE/RAT MOUSE RAT HUMAN RAT	<b>LEPTIN ELISA (IVD CE)</b> LEPTIN PENTASET LEPTIN RECEPTOR ELISA LEPTIN ELISA LEPTIN PENTASET LEPTIN PENTASET LH ELISA LH ELISA (S-TYPE) ELISA, HIGH SENSITIVITY

# IMMUNOASSAYS INDEX

<b>M</b>	HUMAN	MICA ELISA
<b>O</b>	HUMAN	OMENTIN-1 ELISA
<b>P</b>	HUMAN	PLACENTAL LACTOGEN ELISA
	HUMAN	PLACENTAL PROTEIN 13 ELISA
	HUMAN	PROSTATE SECRETORY PROTEIN 94 ELISA
<b>S</b>	HUMAN	S100P ELISA
	HUMAN	SEX HORMONE BINDING GLOBULIN ELISA
	HUMAN	SPERM-ANTIBODY ELISA
	HUMAN	STANNIOCALCIN 1 ELISA
	HUMAN	SURFACTANT PROTEIN A ELISA
<b>V</b>	HUMAN	VASPIN ELISA

## SEPSIS

<b>A</b>	HUMAN	AZUROCIDIN/HBP ELISA
<b>C</b>	CANINE	CLUSTERIN ELISA
	HUMAN	CLUSTERIN ELISA
	RAT	CLUSTERIN ELISA
	CANINE	C-REACTIVE PROTEIN ELISA, HIGH SENSITIVITY
	HUMAN	<b>C-REACTIVE PROTEIN ELISA, HIGH SENSITIVITY (IVD CE)</b>
	HUMAN	<b>C-REACTIVE PROTEIN ELISA (IVD CE)</b>
	MOUSE	C-REACTIVE PROTEIN ELISA, HIGH SENSITIVITY
	RAT	C-REACTIVE PROTEIN ELISA, HIGH SENSITIVITY
<b>I</b>	HUMAN	INTERLEUKIN-1 BETA ELISA
	HUMAN	INTERLEUKIN-8 ELISA
<b>M</b>	HUMAN	MxA PROTEIN ELISA
<b>P</b>	CANINE	PROCALCITONIN ELISA
	HUMAN	<b>PROCALCITONIN ELISA (IVD CE)</b>
<b>S</b>	HUMAN	S100A8 ELISA
<b>T</b>	HUMAN	TREFOIL FACTOR 1 ELISA
	HUMAN	TREFOIL FACTOR 2 ELISA
	HUMAN	TREFOIL FACTOR 3 ELISA
	RAT	TREFOIL FACTOR 3 ELISA
<b>U</b>	HUMAN	URINARY TRYPSIN INHIBITOR ELISA

## STEROID HORMONES

		5 $\alpha$ -ANDROSTANE-3 $\alpha$ ,17 $\beta$ -DIOL GLUCURONIDE ELISA
		17 $\alpha$ -HYDROXYPROGESTERONE ELISA
		17 $\alpha$ -HYDROXYPROGESTERONE FREE IN SALIVA ELISA
<b>A</b>		ALDOSTERONE ELISA
		ANDROSTENEDIONE ELISA
		ANDROSTENEDIONE FREE IN SALIVA ELISA
<b>C</b>	HUMAN	CORTICOSTEROID-BINDING GLOBULIN ELISA
	HUMAN	CORTICOSTERONE ELISA (MULTISPECIES SPECIFICITY)

MOUSE/RAT	CORTICOSTERONE ELISA
HUMAN	CORTISOL (SALIVA) ELISA
	CORTISOL ELISA

<b>D</b>	DEHYDROEPIANDROSTERONE ELISA
	DEHYDROEPIANDROSTERONE SULFATE ELISA
	DEHYDROEPIANDROSTERONE FREE IN SALIVA ELISA
	DIHYDROTESTOSTERONE ELISA

<b>E</b>	ESTRADIOL ELISA
	ESTRADIOL FREE IN SALIVA ELISA
	ESTRIOL FREE IN SALIVA ELISA
HUMAN	ESTRIOL, FREE ELISA
	ESTRONE ELISA
	ESTRONE FREE IN SALIVA ELISA

<b>P</b>	PREGNENOLONE ELISA
	PROGESTERONE ELISA
	PROGESTERONE FREE IN SALIVA ELISA
MOUSE/RAT	PROGESTERONE ELISA

<b>Q</b>	RAT	QUALITY CONTROL SET (CORTICOSTERONE, PROLACTIN, TESTOSTERONE, TSH)
----------	-----	--

<b>S</b>	HUMAN	SEX HORMONE BINDING GLOBULIN ELISA
----------	-------	------------------------------------

<b>T</b>	TESTOSTERONE ELISA
	TESTOSTERONE FREE IN SALIVA ELISA
HUMAN	FREE TESTOSTERONE ELISA
MOUSE/RAT	TESTOSTERONE ELISA

## TRANSPLANTATION

<b>A</b>	HUMAN	ALLOGRAFT INFLAMMATORY FACTOR 1 ELISA
	HUMAN	AMINOACYLASE-1 ELISA
	HUMAN	ANTI-ALPHA-GALACTOSYL IgG ELISA
	HUMAN	ANTI-ALPHA-GALACTOSYL IgM ELISA
	HUMAN	<b>ANTI-IgA ISOTYPE IgG ELISA (IVD CE)</b>

<b>C</b>	HUMAN	sCD40L ELISA
	MOUSE	sCD40L ELISA
	HUMAN	sCD137/4-1BB ELISA
	HUMAN	sCD152/CTLA-4 ELISA

<b>E</b>	HUMAN	sE-SELECTIN ELISA
	MONKEY	sE-SELECTIN ELISA

<b>F</b>	HUMAN	FIBRONECTIN ELISA
----------	-------	-------------------

<b>G</b>	HUMAN	GRANULYSIN ELISA
	HUMAN	GRANZYME B ELISA

## *Antibodies*

### ► **MONOCLONAL ANTIBODIES**

Monoclonal antibodies are prepared using hybridoma technology, fusing the spleen cells of immunized mice with the cells of the mouse myeloma Sp2/0 cell line. The resultant hybridoma cells are selected according to their ability to produce antibodies of the required specificity. The hybridoma cells producing the highest quality antibodies are then cloned and cultivated.

Monoclonal antibodies are protein-G or protein-A purified.

### ► **POLYCLONAL ANTIBODIES**

Polyclonal antibodies are prepared by immunizing experimental animals using optimized immunization protocols. Sera from immunized rabbits, goats, cows or sheep or the yolk from chicken eggs provide the source of specific antibodies. The host animal species is specified in the corresponding product name subtitle.

Polyclonal antibodies are affinity purified on immunizing antigen-immobilized columns.

# ANTIBODIES INDEX

## ANIMAL STUDIES

<b>A</b>	MURINE	ADIPONECTIN (HEK), RABBIT PAb
	PORCINE	ADIPONECTIN (HEK), RABBIT PAb
	PORCINE	ADIPONECTIN (HEK), SHEEP PAb
<b>C</b>	CANINE	CLUSTERIN, RABBIT PAb
	RAT	CLUSTERIN, RABBIT PAb
	CANINE	CLUSTERIN, SHEEP PAb
	CANINE	CYSTATIN C, RABBIT PAb
	MOUSE	CYSTATIN C, RABBIT PAb
	CANINE	CYSTATIN C, SHEEP PAb
	MOUSE	CYSTATIN C, SHEEP PAb
	RAT	CYSTATIN C, SHEEP PAb
<b>F</b>	MOUSE	FIBROBLAST GROWTH FACTOR 21, RABBIT PAb
<b>L</b>	MOUSE	LEPTIN, RABBIT PAb
	RAT	LEPTIN, RABBIT PAb
<b>R</b>	RAT	RESISTIN, RABBIT PAb

## APOPTOSIS

<b>A</b>	HUMAN	ANNEXIN A1, RABBIT PAb
	HUMAN	ANNEXIN A1, SHEEP PAb

## AUTOIMMUNITY

<b>A</b>	HUMAN	ANNEXIN A1, RABBIT PAb
	HUMAN	ANNEXIN A1, SHEEP PAb
<b>G</b>	HUMAN	GLUCOSE-REGULATED PROTEIN 78, SHEEP PAb

## BLOOD PRESSURE REGULATION AND NO METABOLISM

<b>A</b>	HUMAN	ARGINASE-I (LIVER TYPE), MOUSE MAb, Clone: 6G3
----------	-------	--

## BONE AND CARTILAGE METABOLISM

<b>C</b>	HUMAN	CATHEPSIN K, MOUSE MAb, Clone: 3F9
	HUMAN	COMP, MOUSE MAb, Clone: 12C4
	HUMAN	COMP, MOUSE MAb, Clone: 16F12
	HUMAN	COMP, MOUSE MAb, Clone: 17C10
<b>E</b>	HUMAN	ENPP1 (HEK), RABBIT PAb
	HUMAN	ENPP1 (HEK), SHEEP PAb
<b>F</b>	HUMAN	FETUIN-A (AHSG), GOAT PAb
	HUMAN	FETUIN-A (AHSG), RABBIT PAb
	HUMAN	FETUIN-B (HEK), RABBIT PAb
	HUMAN	FETUIN-B (HEK), SHEEP PAb
	HUMAN	FOLLISTATIN, SHEEP PAb
<b>O</b>	HUMAN	OSTEOACTIVIN/GPNMB (HEK), RABBIT PAb
	HUMAN	OSTEOACTIVIN/GPNMB (HEK), SHEEP PAb
	HUMAN	OSTEOBLAST SPECIFIC FACTOR 1, RABBIT PAb

HUMAN	OSTEOBLAST SPECIFIC FACTOR 1, SHEEP PAb
HUMAN	OSTEOBLAST SPECIFIC FACTOR 2, RABBIT PAb
HUMAN	OSTEOBLAST SPECIFIC FACTOR 2, SHEEP PAb
HUMAN	OSTEOCRIN, RABBIT PAb
HUMAN	OSTEOPROTEGERIN, MOUSE MAb, Clone: OPG-01
HUMAN	OSTEOPROTEGERIN, MOUSE MAb, Clone: OPG-13

<b>P</b>	HUMAN	PROCATHEPSIN K, MOUSE MAb, Clone: 4B9
	HUMAN	PROCATHEPSIN K, RABBIT PAb

<b>S</b>	HUMAN	SRANK (SOLUBLE RANK RECEPTOR), RABBIT PAb
	HUMAN	STANNIOCALCIN 1, RABBIT PAb

<b>T</b>	HUMAN	TRAP 5, MOUSE MAb, Clone: TRAP-01
----------	-------	-----------------------------------

## CARDIOVASCULAR DISEASE

<b>A</b>	HUMAN	ALLOGRAFT INFLAMMATORY FACTOR 1, SHEEP PAb
	HUMAN	APOPTOSIS INHIBITOR OF MACROPHAGE, SHEEP PAb

<b>C</b>	HUMAN	CARDIOTROPHIN-1, MOUSE MAb, Clone: 1F3
	HUMAN	CARDIOTROPHIN-1, MOUSE MAb, Clone: 3G6D9
	HUMAN	CARDIOTROPHIN-1, RABBIT PAb

<b>E</b>	HUMAN	EPIDERMAL FABP, RABBIT PAb
	HUMAN	EPIDERMAL FABP, SHEEP PAb

<b>F</b>	HUMAN	FETUIN-A (AHSG), GOAT PAb
	HUMAN	FETUIN-A (AHSG), RABBIT PAb

<b>G</b>	HUMAN	GLUCOSE-REGULATED PROTEIN 78, SHEEP PAb
----------	-------	---

<b>I</b>	HUMAN	INTERLEUKIN-33, RABBIT PAb
	HUMAN	INTERLEUKIN-33, SHEEP PAb

<b>M</b>	HUMAN	MYOSIN (CARDIAC) LIGHT CHAIN, RABBIT PAb
----------	-------	--

<b>O</b>	HUMAN	OSTEOBLAST SPECIFIC FACTOR 2, RABBIT PAb
	HUMAN	OSTEOBLAST SPECIFIC FACTOR 2, SHEEP PAb

<b>P</b>	HUMAN	PARAOXONASE 1, SHEEP PAb
----------	-------	--------------------------

<b>S</b>	HUMAN	S100A10, SHEEP PAb
	HUMAN	S100A11, SHEEP PAb
	HUMAN	S100A13, SHEEP PAb
	HUMAN	S100G, SHEEP PAb
	HUMAN	S100P, RABBIT PAb
	HUMAN	S100P, SHEEP PAb
	HUMAN	S100P, SHEEP PAb

## CORONARY ARTERY DISEASE

<b>A</b>	HUMAN	ADIPONECTIN (HEK), GOAT PAb
	HUMAN	ADIPONECTIN (HEK), RABBIT PAb
	MURINE	ADIPONECTIN (HEK), RABBIT PAb
	PORCINE	ADIPONECTIN (HEK), RABBIT PAb
	HUMAN	ADIPONECTIN (HEK), SHEEP PAb
	PORCINE	ADIPONECTIN (HEK), SHEEP PAb
	HUMAN	ADIPONECTIN, MOUSE MAb, Clone: 5E4
	HUMAN	ADIPONECTIN, MOUSE MAb, Clone: 7C11
	HUMAN	ADIPONECTIN, RABBIT PAb
	HUMAN	ADIPONECTIN, RABBIT PAb
	HUMAN	ADIPONECTIN, RABBIT PAb
	HUMAN	ADIPONECTIN, RABBIT PAb
	HUMAN	ADIPONECTIN, RABBIT PAb



# ANTIBODIES INDEX

**S** HUMAN S100A9, SHEEP PAb

## CYTOKINES AND CHEMOKINES AND RELATED MOLECULES

**C** HUMAN CXCL12, RABBIT PAb  
HUMAN CXCL12, SHEEP PAb

**I** HUMAN INTERLEUKIN-33, RABBIT PAb  
HUMAN INTERLEUKIN-33, SHEEP PAb

**O** HUMAN OSTEOBLAST SPECIFIC FACTOR 1, RABBIT PAb  
HUMAN OSTEOBLAST SPECIFIC FACTOR 1, SHEEP PAb  
HUMAN OSTEOBLAST SPECIFIC FACTOR 2, RABBIT PAb  
HUMAN OSTEOBLAST SPECIFIC FACTOR 2, SHEEP PAb

## DIABETOLOGY

**A** HUMAN ADIPOCYTE FABP, GOAT PAb  
HUMAN ADIPOCYTE FABP, RABBIT PAb  
HUMAN ADIPONECTIN (HEK), GOAT PAb  
HUMAN ADIPONECTIN (HEK), RABBIT PAb  
MURINE ADIPONECTIN (HEK), RABBIT PAb  
PORCINE ADIPONECTIN (HEK), RABBIT PAb  
HUMAN ADIPONECTIN (HEK), SHEEP PAb  
PORCINE ADIPONECTIN (HEK), SHEEP PAb  
HUMAN ADIPONECTIN, MOUSE MAb, Clone: 5E4  
HUMAN ADIPONECTIN, MOUSE MAb, Clone: 7C11  
HUMAN ADIPONECTIN, RABBIT PAb

**E** HUMAN ENPP1 (HEK), RABBIT PAb  
HUMAN ENPP1 (HEK), SHEEP PAb  
HUMAN EPIDERMAL FABP, RABBIT PAb  
HUMAN EPIDERMAL FABP, SHEEP PAb

**F** HUMAN FAM3B, SHEEP PAb  
HUMAN FIBROBLAST GROWTH FACTOR 21, RABBIT PAb  
MOUSE FIBROBLAST GROWTH FACTOR 21, RABBIT PAb  
HUMAN FIBROBLAST GROWTH FACTOR 21, SHEEP PAb

**L** HUMAN LEPTIN RECEPTOR, MOUSE MAb, Clone: LPR-01  
HUMAN LEPTIN RECEPTOR, MOUSE MAb, Clone: LPR-02  
HUMAN LEPTIN, MOUSE MAb, Clone: LEP-02  
HUMAN LEPTIN, RABBIT PAb  
MOUSE LEPTIN, RABBIT PAb  
RAT LEPTIN, RABBIT PAb

**O** HUMAN OMENTIN-1, RABBIT PAb  
HUMAN OMENTIN-1, SHEEP PAb

**R** HUMAN REGENERATING PROTEIN 1 ALPHA, RABBIT PAb  
HUMAN RESISTIN, GOAT PAb  
HUMAN RESISTIN, RABBIT PAb  
RAT RESISTIN, RABBIT PAb

**S** HUMAN SECRETAGOGIN, RABBIT PAb  
RAT SECRETAGOGIN, RABBIT PAb  
HUMAN SECRETAGOGIN, SHEEP PAb  
HUMAN sRAGE, SHEEP PAb

## ENERGY METABOLISM AND BODY WEIGHT REGULATION

**A** HUMAN ACYLATION STIMULATING PROTEIN, MOUSE MAb, Clone: 4H3  
HUMAN ADIPOCYTE FABP, GOAT PAb  
HUMAN ADIPOCYTE FABP, RABBIT PAb  
HUMAN ADIPONECTIN (HEK), GOAT PAb  
HUMAN ADIPONECTIN (HEK), RABBIT PAb  
MURINE ADIPONECTIN (HEK), RABBIT PAb  
PORCINE ADIPONECTIN (HEK), RABBIT PAb  
HUMAN ADIPONECTIN (HEK), SHEEP PAb  
PORCINE ADIPONECTIN (HEK), SHEEP PAb  
HUMAN ADIPONECTIN, MOUSE MAb, Clone: 5E4  
HUMAN ADIPONECTIN, MOUSE MAb, Clone: 7C11  
HUMAN ADIPONECTIN, RABBIT PAb  
HUMAN ADIPOPILIN, RABBIT PAb  
HUMAN ADIPOPILIN, SHEEP PAb  
HUMAN AGOUTI-RELATED PROTEIN (AGRP), RABBIT PAb  
HUMAN ANGIOPOIETIN-LIKE PROTEIN 3, RABBIT PAb  
HUMAN ANGIOPOIETIN-LIKE PROTEIN 3, SHEEP PAb  
HUMAN ANGIOPOIETIN-LIKE PROTEIN 4 (HEK), SHEEP PAb  
HUMAN ANGIOPOIETIN-LIKE PROTEIN 4, RABBIT PAb  
HUMAN ANGIOPOIETIN-LIKE PROTEIN 4, SHEEP PAb  
HUMAN APOLIPOPROTEIN D, RABBIT PAb  
HUMAN APOLIPOPROTEIN D, SHEEP PAb

**E** HUMAN ENPP1 (HEK), RABBIT PAb  
HUMAN ENPP1 (HEK), SHEEP PAb  
HUMAN EPIDERMAL FABP, RABBIT PAb  
HUMAN EPIDERMAL FABP, SHEEP PAb

**F** HUMAN FAM3B, SHEEP PAb  
HUMAN FETUIN-B (HEK), RABBIT PAb  
HUMAN FETUIN-B (HEK), SHEEP PAb  
HUMAN FIBROBLAST GROWTH FACTOR 19, RABBIT PAb  
HUMAN FIBROBLAST GROWTH FACTOR 19, SHEEP PAb  
HUMAN FIBROBLAST GROWTH FACTOR 21, RABBIT PAb  
MOUSE FIBROBLAST GROWTH FACTOR 21, RABBIT PAb  
HUMAN FIBROBLAST GROWTH FACTOR 21, SHEEP PAb  
HUMAN FIBROBLAST GROWTH FACTOR 23, RABBIT PAb

**G** HUMAN GLUCOSE-REGULATED PROTEIN 78, SHEEP PAb

**I** HUMAN INTERLEUKIN-33, RABBIT PAb  
HUMAN INTERLEUKIN-33, SHEEP PAb

**L** HUMAN LEPTIN RECEPTOR, MOUSE MAb, Clone: LPR-01  
HUMAN LEPTIN RECEPTOR, MOUSE MAb, Clone: LPR-02  
HUMAN LEPTIN, MOUSE MAb, Clone: LEP-02  
HUMAN LEPTIN, RABBIT PAb  
MOUSE LEPTIN, RABBIT PAb  
RAT LEPTIN, RABBIT PAb

**N** HUMAN NESFATIN-1, SHEEP PAb

**O** HUMAN OMENTIN-1, RABBIT PAb  
HUMAN OMENTIN-1, SHEEP PAb

**P** HUMAN PARAOXONASE 1, SHEEP PAb  
HUMAN PIGMENT EPITHELIUM-DERIVED FACTOR, RABBIT PAb  
HUMAN PIGMENT EPITHELIUM-DERIVED FACTOR, SHEEP PAb

# ANTIBODIES INDEX

<b>R</b>	HUMAN	RESISTIN, GOAT PAb
	HUMAN	RESISTIN, RABBIT PAb
	RAT	RESISTIN, RABBIT PAb
	HUMAN	RESISTIN-LIKE MOLECULE-BETA, RABBIT PAb

<b>T</b>	HUMAN	TREFOIL FACTOR 1, RABBIT PAb
	HUMAN	TREFOIL FACTOR 1, SHEEP PAb
	HUMAN	TREFOIL FACTOR 2, RABBIT PAb
	HUMAN	TREFOIL FACTOR 2, SHEEP PAb
	HUMAN	TREFOIL FACTOR 3, RABBIT PAb
	HUMAN	TREFOIL FACTOR 3, SHEEP PAb

<b>Z</b>	HUMAN	ZINC-ALPHA-2-GLYCOPROTEIN, RABBIT PAb
	HUMAN	ZINC-ALPHA-2-GLYCOPROTEIN, SHEEP PAb

## CHRONIC RENAL FAILURE

<b>A</b>	HUMAN	ADIPONECTIN (HEK), GOAT PAb
	HUMAN	ADIPONECTIN (HEK), RABBIT PAb
	MURINE	ADIPONECTIN (HEK), RABBIT PAb
	PORCINE	ADIPONECTIN (HEK), RABBIT PAb
	HUMAN	ADIPONECTIN (HEK), SHEEP PAb
	PORCINE	ADIPONECTIN (HEK), SHEEP PAb
	HUMAN	ADIPONECTIN, MOUSE MAb, Clone: 5E4
	HUMAN	ADIPONECTIN, MOUSE MAb, Clone: 7C11
	HUMAN	ADIPONECTIN, RABBIT PAb

## IMMUNE RESPONSE, INFECTION AND INFLAMMATION

<b>A</b>	HUMAN	ALLOGRAFT INFLAMMATORY FACTOR 1, SHEEP PAb
	HUMAN	ANNEXIN A1, RABBIT PAb
	HUMAN	ANNEXIN A1, SHEEP PAb
	HUMAN	APOPTOSIS INHIBITOR OF MACROPHAGE, SHEEP PAb

<b>C</b>	HUMAN	CLUB CELL PROTEIN (CC16), RABBIT PAb
	HUMAN	CXCL12, RABBIT PAb
	HUMAN	CXCL12, SHEEP PAb

<b>F</b>	HUMAN	FETUIN-B (HEK), RABBIT PAb
	HUMAN	FETUIN-B (HEK), SHEEP PAb

<b>G</b>	HUMAN	GLUCOSE-REGULATED PROTEIN 78, SHEEP PAb
	HUMAN	REGENERATING PROTEIN 1 ALPHA, RABBIT PAb

<b>S</b>	HUMAN	S100A6, RABBIT PAb
	HUMAN	S100A6, SHEEP PAb
	HUMAN	S100A8, SHEEP PAb
	HUMAN	S100A9, SHEEP PAb
	HUMAN	S100A11, SHEEP PAb
	HUMAN	S100A12, RABBIT PAb
	HUMAN	S100A12, SHEEP PAb

<b>T</b>	HUMAN	TREFOIL FACTOR 1, RABBIT PAb
	HUMAN	TREFOIL FACTOR 1, SHEEP PAb
	HUMAN	TREFOIL FACTOR 2, RABBIT PAb
	HUMAN	TREFOIL FACTOR 2, SHEEP PAb

<b>U</b>	HUMAN	URINARY TRYPSIN INHIBITOR, RABBIT PAb
----------	-------	---------------------------------------

## IMMUNOLOGY

<b>A</b>	HUMAN	ARGINASE-I (LIVER TYPE), MOUSE MAb, Clone: 6G3
----------	-------	--

## INFLAMMATORY BOWEL DISEASE

<b>S</b>	HUMAN	S100A12, RABBIT PAb
	HUMAN	S100A12, SHEEP PAb

## IRON METABOLISM

<b>S</b>	HUMAN	STFR, MOUSE MAb, Clone: TFR-01
----------	-------	--------------------------------

## LIPOPROTEIN METABOLISM

<b>A</b>	HUMAN	APOLIPOPROTEIN D, RABBIT PAb
	HUMAN	APOLIPOPROTEIN D, SHEEP PAb

<b>P</b>	HUMAN	PARAOXONASE 1, SHEEP PAb
----------	-------	--------------------------

<b>S</b>	HUMAN	S100A12, RABBIT PAb
	HUMAN	S100A12, SHEEP PAb

## METABOLIC SYNDROME

<b>A</b>	HUMAN	APOPTOSIS INHIBITOR OF MACROPHAGE, SHEEP PAb
----------	-------	--

## NEURAL TISSUE DAMAGE MARKERS

<b>C</b>	HUMAN	CYSTATIN C (E.COLI), RABBIT PAb
	HUMAN	CYSTATIN C (E.COLI), SHEEP PAb
	CANINE	CYSTATIN C, RABBIT PAb
	HUMAN	CYSTATIN C, RABBIT PAb
	MOUSE	CYSTATIN C, RABBIT PAb
	CANINE	CYSTATIN C, SHEEP PAb
	HUMAN	CYSTATIN C, SHEEP PAb
	MOUSE	CYSTATIN C, SHEEP PAb
	RAT	CYSTATIN C, SHEEP PAb

<b>N</b>	HUMAN	NESFATIN-1, SHEEP PAb
	HUMAN	NEUROGLOBIN, CHICKEN PAb
	HUMAN	NEUROGLOBIN, MOUSE MAb, Clone: 13C8

<b>O</b>	HUMAN	OSTEOACTIVIN/GPNMB (HEK), RABBIT PAb
	HUMAN	OSTEOACTIVIN/GPNMB (HEK), SHEEP PAb

<b>P</b>	HUMAN	PROSTAGLANDIN-D SYNTHASE (LIPOCALIN-TYPE), RABBIT PAb
	HUMAN	PROSTAGLANDIN-D SYNTHASE (LIPOCALIN-TYPE), SHEEP PAb

<b>S</b>	HUMAN	S100A6, RABBIT PAb
	HUMAN	S100A6, SHEEP PAb
	HUMAN	S100A12, RABBIT PAb
	HUMAN	S100A12, SHEEP PAb
	HUMAN	S100G, SHEEP PAb
	HUMAN	SECRETAGOGIN, RABBIT PAb
	RAT	SECRETAGOGIN, RABBIT PAb
	HUMAN	SECRETAGOGIN, SHEEP PAb

# ANTIBODIES INDEX

HUMAN sRAGE, SHEEP PAb

**V** HUMAN VISININ-LIKE PROTEIN 1, RABBIT PAb  
HUMAN VISININ-LIKE PROTEIN 1, SHEEP PAb

## ONCOLOGY

**A** HUMAN ANGIOPOIETIN-LIKE PROTEIN 3, RABBIT PAb  
HUMAN ANGIOPOIETIN-LIKE PROTEIN 3, SHEEP PAb  
HUMAN ANGIOSTATIN, RABBIT PAb  
HUMAN ANNEXIN A1, RABBIT PAb  
HUMAN ANNEXIN A1, SHEEP PAb  
HUMAN ARGINASE-I (LIVER TYPE), MOUSE MAb, Clone: 6G3

**B** HUMAN BETA-MICROSEMINOPROTEIN, RABBIT PAb  
HUMAN BETA-MICROSEMINOPROTEIN, SHEEP PAb

**C** HUMAN CLUSTERIN, MOUSE MAb, Clone: HS-3  
CANINE CLUSTERIN, RABBIT PAb  
RAT CLUSTERIN, RABBIT PAb  
CANINE CLUSTERIN, SHEEP PAb

**E** HUMAN ENDOSTATIN, RABBIT PAb  
HUMAN EP-CAM (MK-1), MOUSE MAb, Clone: MK-1-25  
HUMAN EP-CAM (MK-1), MOUSE MAb, Clone: MK-1-410  
HUMAN EPIDERMAL FABP, RABBIT PAb  
HUMAN EPIDERMAL FABP, SHEEP PAb

**F** HUMAN FETUIN-B (HEK), RABBIT PAb  
HUMAN FETUIN-B (HEK), SHEEP PAb  
HUMAN FOLLISTATIN, SHEEP PAb

**G** HUMAN GLUCOSE-REGULATED PROTEIN 78, SHEEP PAb

**H** HUMAN HERSTATIN, MOUSE MAb, Clone: 10C7  
HUMAN HERSTATIN, MOUSE MAb, Clone: 2D4  
HUMAN HERSTATIN, MOUSE MAb, Clone: 2E9  
HUMAN HERSTATIN, MOUSE MAb, Clone: 7H3  
HUMAN HERSTATIN, RABBIT PAb

**I** HUMAN INTERLEUKIN-33, RABBIT PAb  
HUMAN INTERLEUKIN-33, SHEEP PAb

**M** HUMAN MIDKINE, RABBIT PAb

**O** HUMAN OSTEOACTIVIN/GPNMB (HEK), RABBIT PAb  
HUMAN OSTEOACTIVIN/GPNMB (HEK), SHEEP PAb  
HUMAN OSTEOBLAST SPECIFIC FACTOR 2, RABBIT PAb  
HUMAN OSTEOBLAST SPECIFIC FACTOR 2, SHEEP PAb

**P** HUMAN PROLACTIN-INDUCIBLE PROTEIN, RABBIT PAb  
HUMAN PROLACTIN-INDUCIBLE PROTEIN, SHEEP PAb  
HUMAN PROSTATE-SPECIFIC GENE-1, RABBIT PAb  
HUMAN REGENERATING PROTEIN 1 ALPHA, RABBIT PAb

**S** HUMAN S100A6, RABBIT PAb  
HUMAN S100A6, SHEEP PAb  
HUMAN S100A8, SHEEP PAb  
HUMAN S100A11, SHEEP PAb

HUMAN S100A12, RABBIT PAb  
HUMAN S100A12, SHEEP PAb  
HUMAN S100A13, SHEEP PAb  
HUMAN S100G, SHEEP PAb  
HUMAN S100P, RABBIT PAb  
HUMAN S100P, SHEEP PAb  
HUMAN SECRETAGOGIN, RABBIT PAb  
RAT SECRETAGOGIN, RABBIT PAb  
HUMAN SECRETAGOGIN, SHEEP PAb  
HUMAN STANNIOCALCIN 1, RABBIT PAb  
HUMAN STFR, MOUSE MAb, Clone: TFR-01

**T** HUMAN TREFOIL FACTOR 1, RABBIT PAb  
HUMAN TREFOIL FACTOR 1, SHEEP PAb  
HUMAN TREFOIL FACTOR 2, RABBIT PAb  
HUMAN TREFOIL FACTOR 2, SHEEP PAb  
HUMAN TREFOIL FACTOR 3, RABBIT PAb  
HUMAN TREFOIL FACTOR 3, SHEEP PAb

**U** HUMAN URINARY TRYPSIN INHIBITOR, RABBIT PAb

**V** HUMAN VISININ-LIKE PROTEIN 1, RABBIT PAb  
HUMAN VISININ-LIKE PROTEIN 1, SHEEP PAb

**Z** HUMAN ZINC-ALPHA-2-GLYCOPROTEIN, RABBIT PAb  
HUMAN ZINC-ALPHA-2-GLYCOPROTEIN, SHEEP PAb  
HUMAN ZYMOGEN GRANULE MEMBRANE PROTEIN 16, RABBIT PAb  
HUMAN ZYMOGEN GRANULE MEMBRANE PROTEIN 16, SHEEP PAb

## OTHERS

**C** HUMAN CLUSTERIN, MOUSE MAb, Clone: HS-3  
CANINE CLUSTERIN, RABBIT PAb  
RAT CLUSTERIN, RABBIT PAb  
CANINE CLUSTERIN, SHEEP PAb

**F** HUMAN FETUIN-B (HEK), RABBIT PAb  
HUMAN FETUIN-B (HEK), SHEEP PAb

**H** HUMAN HEPATITIS B PROTEIN X (HBX) VIRUS, RABBIT PAb

**P** HUMAN PARAOXONASE 1, SHEEP PAb  
HUMAN PIGMENT EPITHELIUM-DERIVED FACTOR, RABBIT PAb  
HUMAN PIGMENT EPITHELIUM-DERIVED FACTOR, SHEEP PAb

**S** HUMAN S100A6, RABBIT PAb  
HUMAN S100A6, SHEEP PAb  
HUMAN S100A10, SHEEP PAb  
HUMAN S100A11, SHEEP PAb  
HUMAN S100A13, SHEEP PAb  
HUMAN S100A16, RABBIT PAb  
HUMAN S100A16, SHEEP PAb  
HUMAN S100G, SHEEP PAb

**T** HUMAN THYROSTIMULIN BETA SUBUNIT, RABBIT PAb  
HUMAN THYROSTIMULIN BETA SUBUNIT, SHEEP PAb

**Z** HUMAN ZYMOGEN GRANULE MEMBRANE PROTEIN 16, RABBIT PAb  
HUMAN ZYMOGEN GRANULE MEMBRANE PROTEIN 16, SHEEP PAb

## PANCREATIC REGULATORY MOLECULES

<b>R</b>	HUMAN	REGENERATING ISLET-DERIVED PROTEIN 3 (REG3A/PAP1), RABBIT PAb
	HUMAN	REGENERATING PROTEIN 1 ALPHA, RABBIT PAb

## PULMONARY DISEASES

<b>A</b>	HUMAN	ARGINASE-I (LIVER TYPE), MOUSE MAb, Clone: 6G3
----------	-------	--

<b>C</b>	HUMAN	CLUB CELL PROTEIN (CC16), RABBIT PAb
----------	-------	--------------------------------------

<b>S</b>	HUMAN	S100A8, SHEEP PAb
	HUMAN	S100A9, SHEEP PAb

## RENAL DISEASE

<b>A</b>	HUMAN	APOPTOSIS INHIBITOR OF MACROPHAGE, SHEEP PAb
----------	-------	--

<b>C</b>	HUMAN	CLUSTERIN, MOUSE MAb, Clone: HS-3
	CANINE	CLUSTERIN, RABBIT PAb
	RAT	CLUSTERIN, RABBIT PAb
	CANINE	CLUSTERIN, SHEEP PAb
	HUMAN	CYSTATIN C (E.COLI), RABBIT PAb
	HUMAN	CYSTATIN C (E.COLI), SHEEP PAb
	CANINE	CYSTATIN C, RABBIT PAb
	HUMAN	CYSTATIN C, RABBIT PAb
	MOUSE	CYSTATIN C, RABBIT PAb
	CANINE	CYSTATIN C, SHEEP PAb
	HUMAN	CYSTATIN C, SHEEP PAb
	MOUSE	CYSTATIN C, SHEEP PAb
	RAT	CYSTATIN C, SHEEP PAb

<b>F</b>	HUMAN	FETUIN-A (AHSG), GOAT PAb
	HUMAN	FETUIN-A (AHSG), RABBIT PAb
	HUMAN	FIBROBLAST GROWTH FACTOR 23, RABBIT PAb

<b>O</b>	HUMAN	OSTEOACTIVIN/GPNMB (HEK), RABBIT PAb
	HUMAN	OSTEOACTIVIN/GPNMB (HEK), SHEEP PAb

<b>P</b>	HUMAN	PROSTAGLANDIN-D SYNTHASE (LIPOCALIN-TYPE), RABBIT PAb
	HUMAN	PROSTAGLANDIN-D SYNTHASE (LIPOCALIN-TYPE), SHEEP PAb

<b>S</b>	HUMAN	S100A12, RABBIT PAb
	HUMAN	S100A12, SHEEP PAb
	HUMAN	sRAGE, SHEEP PAb

<b>T</b>	HUMAN	TREFOIL FACTOR 3, RABBIT PAb
	HUMAN	TREFOIL FACTOR 3, SHEEP PAb

<b>U</b>	HUMAN	URINARY TRYPSIN INHIBITOR, RABBIT PAb
	HUMAN	UROMODULIN, RABBIT PAb
	HUMAN	UROMODULIN, SHEEP PAb

## REPRODUCTION

<b>C</b>	HUMAN	CYSTEINE-RICH SECRETORY PROTEIN 1, RABBIT PAb
	HUMAN	CYSTEINE-RICH SECRETORY PROTEIN 1, SHEEP PAb

<b>F</b>	HUMAN	FOLLISTATIN, SHEEP PAb
----------	-------	------------------------

<b>L</b>	HUMAN	LEPTIN RECEPTOR, MOUSE MAb, Clone: LPR-01
	HUMAN	LEPTIN RECEPTOR, MOUSE MAb, Clone: LPR-02
	HUMAN	LEPTIN, MOUSE MAb, Clone: LEP-02
	HUMAN	LEPTIN, RABBIT PAb
	MOUSE	LEPTIN, RABBIT PAb
	RAT	LEPTIN, RABBIT PAb

<b>O</b>	HUMAN	OMENTIN-1, RABBIT PAb
	HUMAN	OMENTIN-1, SHEEP PAb

<b>P</b>	HUMAN	PLACENTAL PROTEIN 13, RABBIT PAb
	HUMAN	PLACENTAL PROTEIN 13, SHEEP PAb
	HUMAN	PROLACTIN-INDUCIBLE PROTEIN, RABBIT PAb
	HUMAN	PROLACTIN-INDUCIBLE PROTEIN, SHEEP PAb

<b>S</b>	HUMAN	S100P, RABBIT PAb
	HUMAN	S100P, SHEEP PAb
	HUMAN	STANNIocalcin 1, RABBIT PAb

## SEPSIS

<b>C</b>	HUMAN	CLUSTERIN, MOUSE MAb, Clone: HS-3
	CANINE	CLUSTERIN, RABBIT PAb
	RAT	CLUSTERIN, RABBIT PAb
	CANINE	CLUSTERIN, SHEEP PAb

<b>L</b>	HUMAN	LEUCINE-RICH ALPHA-2-GLYCOPROTEIN, RABBIT PAb
	HUMAN	LEUCINE-RICH ALPHA-2-GLYCOPROTEIN, SHEEP PAb

<b>S</b>	HUMAN	S100A8, SHEEP PAb
	HUMAN	S100A9, SHEEP PAb

<b>T</b>	HUMAN	TREFOIL FACTOR 1, RABBIT PAb
	HUMAN	TREFOIL FACTOR 1, SHEEP PAb
	HUMAN	TREFOIL FACTOR 2, RABBIT PAb
	HUMAN	TREFOIL FACTOR 2, SHEEP PAb
	HUMAN	TREFOIL FACTOR 3, RABBIT PAb
	HUMAN	TREFOIL FACTOR 3, SHEEP PAb

<b>U</b>	HUMAN	URINARY TRYPSIN INHIBITOR, RABBIT PAb
----------	-------	---------------------------------------

## STEROID HORMONES

<b>C</b>	HUMAN	CRFBP, SHEEP PAb
----------	-------	------------------

## TRANSPLANTATION

<b>A</b>	HUMAN	ALLOGRAFT INFLAMMATORY FACTOR 1, SHEEP PAb
----------	-------	--



## Proteins

The isolation of many natural proteins at a production scale is ineffective or even impossible for many reasons. The use of modern recombinant protein technologies has overcome many of the limitations and enabled the preparation of a wide range of proteins facilitating research among the scientific community.

From among the many production designs, we have chosen to take advantage of the bacterial and mammalian cell expression systems. Special sequences (tags) enabling easy purification and determination are often linked to the C-terminus or N-terminus of the protein sequence.

An effective combination of HPLC techniques including ion-exchange chromatography, size exclusion chromatography, Ni-NTA chromatography or antibody immobilized affinity chromatography is used to purify the recombinant proteins.

### ▶ **HEK293 CELL-EXPRESSED RECOMBINANT PROTEINS**

Recombinant proteins produced by mammalian HEK293 cells exhibit superior features including their glycosylation pattern and proper folding and subsequent solubility in buffers of physiological pH and ionic strength. As a whole they possess features making them the most similar to natural proteins with respect to their structure, antigenicity and biological activity.

### ▶ **E. COLI-EXPRESSED RECOMBINANT PROTEINS**

*E. coli* bacterial expression systems are widely used to produce recombinant proteins easily, quickly, cost effectively and in large quantity. Such is usually the primary method of choice to produce recombinant proteins of small size and unglycosylated proteins. Such proteins often possess antigenicity and biological activity meeting all customer requirements.

### ▶ **ISOLATED NATURAL PROTEINS**

Human or animal body fluids and tissues are traditional sources of raw materials for the isolation of proteins occurring in concentrations high enough to make their isolation possible and effective. Using deliberately selected, sophisticated purification methods, isolated proteins maintain most of their natural biological functions. HPLC techniques, ion-exchange chromatography, size exclusion chromatography or affinity chromatography are all employed.

# PROTEINS INDEX

## ANIMAL STUDIES

<b>A</b>	Rec.	MOUSE	ADIPONECTIN
	Rec.	MOUSE	ADIPONECTIN (Trimeric form)
	Rec.	PORCINE	ADIPONECTIN
	Rec.	RAT	ADIPONECTIN
	Rec.	MURINE	ADIPONECTIN

<b>C</b>	Rec.	CANINE	CLUSTERIN
	Rec.	RAT	CLUSTERIN
	Rec.	CANINE	CYSTATIN C
	Rec.	MOUSE	CYSTATIN C
	Rec.	RAT	CYSTATIN C

<b>E</b>	Rec.	MURINE	EOTAXIN
----------	------	--------	---------

<b>F</b>	Rec.	MOUSE	FIBROBLAST GROWTH FACTOR 15
	Rec.	MOUSE	FIBROBLAST GROWTH FACTOR 21
	Rec.	MOUSE	FIBROBLAST GROWTH FACTOR 21, Tag-free
	Rec.	RAT	FRACTALKINE

<b>G</b>	Rec.	MURINE	GM-CSF
	Rec.	RAT	GM-CSF

<b>I</b>	Rec.	MURINE	INTERLEUKIN-2
	Rec.	RAT	INTERLEUKIN-2
	Rec.	MURINE	INTERLEUKIN-4
	Rec.	RAT	INTERLEUKIN-4
	Rec.	MURINE	INTERLEUKIN-5
	Rec.	RAT	INTERLEUKIN-5
	Rec.	MURINE	INTERLEUKIN-6
	Rec.	RAT	INTERLEUKIN-6
<b>I</b>	Rec.	MURINE	INTERLEUKIN-22
	Rec.	MURINE	INTERLEUKIN-22

<b>I</b>	Rec.	MURINE	INTERLEUKIN-10
	Rec.	RAT	INTERLEUKIN-10
	Rec.	MURINE	INTERLEUKIN-12
	Rec.	MURINE	INTERLEUKIN-13
	Rec.	RAT	INTERLEUKIN-13
	Rec.	MURINE	INTERLEUKIN-17F

<b>L</b>	Rec.	MOUSE	LEPTIN, Tag-free
	Rec.	RAT	LEPTIN, Tag-free

<b>M</b>	Rec.	RAT	MONOCYTE CHEMOTACTIC PROTEIN-1
----------	------	-----	--------------------------------

<b>P</b>	Rec.	MURINE	PROLACTIN
	Rec.	RAT	PROLACTIN

<b>R</b>	Rec.	MOUSE	RESISTIN
	Rec.	RAT	RESISTIN
	Rec.	MOUSE	RESISTIN-LIKE MOLECULE-ALPHA

<b>T</b>	Rec.	MURINE	TNF- $\alpha$
	Rec.	RAT	TNF- $\alpha$

## APOPTOSIS

Rec.	HUMAN	4-1BB LIGAND
Rec.	HUMAN	4-1BB RECEPTOR

<b>A</b>	Rec.	HUMAN	ACTIVIN A
	Rec.	RAT	
	Rec.	MURINE	
	Rec.	HUMAN	ACTIVIN B
	Rec.	HUMAN	AITRL
	Rec.	HUMAN	ANG-1
<b>A</b>	Rec.	HUMAN	ANG-2
	Rec.	MURINE	APRIL
	Rec.	HUMAN	APRIL
	Rec.	HUMAN	APRIL

<b>B</b>	Rec.	HUMAN	BMP-3
	Rec.	HUMAN	BMP-6

<b>C</b>	Rec.	HUMAN	CNTF
	Rec.	RAT	CNTF
	Rec.	HUMAN	CTGF
	Rec.	HUMAN	CTGFL/WISP-2
	Rec.	HUMAN	CYCLOPHILIN F

<b>G</b>	Rec.	HUMAN	GALECTIN-1
	Rec.	MURINE	GRANZYME B BACULOVIRUS

<b>H</b>	Rec.	HUMAN	HB-EGF
	Rec.	HUMAN	HEREGULIN $\beta$ -1
	Rec.	HUMAN	HVEM-FC

<b>I</b>	Rec.	HUMAN	IGF-BP1
	Rec.	HUMAN	IGF-BP2
	Rec.	HUMAN	IGF-BP3
	Rec.	HUMAN	IGF-BP4
	Rec.	HUMAN	IGF-BP5
	Rec.	HUMAN	IGF-BP6
	Rec.	HUMAN	IGF-BP7
	Rec.	HUMAN	INTERLEUKIN-16
	Rec.	HUMAN	INTERLEUKIN-24
	Rec.	HUMAN	INTERLEUKIN-24

<b>M</b>	Rec.	HUMAN	MASPIN
	Rec.	HUMAN	MIA
	Rec.	HUMAN	MIA-2
	Rec.		MYCOPLASMA ARGININE DEIMINASE (ADI)

<b>P</b>	Rec.	HUMAN	PTHrP
----------	------	-------	-------

<b>S</b>	Rec.	HUMAN	SCD40 LIGAND
	Rec.	MURINE	SCD40 LIGAND
	Rec.	HUMAN	SDLL-1
	Rec.	HUMAN	SDLL-4
	Rec.	HUMAN	SERGLYCIN
	Rec.	HUMAN	sFAS LIGAND
	Rec.	HUMAN	sFRP-1
	Rec.	HUMAN	SONIC HEDGEHOG (SHH)
	Rec.	MURINE	SONIC HEDGEHOG (SHH)
	Rec.	HUMAN	sRANK LIGAND
	Rec.	MURINE	sRANK LIGAND
	Rec.	RAT	sRANK LIGAND
	Rec.	HUMAN	sTRAIL/APO2L
	Rec.	HUMAN	sTRAIL/APO2L

<b>T</b>	Rec.	HUMAN	TGF-BETA 1
	Rec.	HUMAN	TGF-BETA 1
	Rec.	HUMAN	TGF-BETA 2
	Rec.	HUMAN	TGF-BETA 3

# PROTEINS INDEX

Rec.	HUMAN	TGF- $\beta$ 2
Rec.	HUMAN	THYMOSIN- $\beta$ 4
Rec.	HUMAN	TIGAR
Rec.	HUMAN	TIGAR-TAT
Rec.	HUMAN	TL-1A
Rec.	HUMAN	TLR-3
Rec.	HUMAN	TNF- $\beta$
Rec.	MURINE	TRAIL
Rec.	HUMAN	TSLP

## AUTOIMMUNITY

**G** Rec. HUMAN GLUCOSE-REGULATED PROTEIN 78

**M** Rec. HUMAN MIF

## BLOOD PRESSURE REGULATION AND NO METABOLISM

**R** Rec. HUMAN RENIN

## BONE AND CARTILAGE METABOLISM

**A** Rec. HUMAN ANG-1  
Rec. HUMAN ANG-2

**B** Rec. HUMAN BMP-3  
Rec. HUMAN BMP-5  
Rec. HUMAN BMP-6  
Rec. HUMAN BONE MORPHOGENETIC PROTEIN-2  
Rec. HUMAN BONE MORPHOGENETIC PROTEIN-4  
Rec. MURINE BONE MORPHOGENETIC PROTEIN-4

**C** Rec. MURINE CARDIOTROPHIN-1  
Rec. HUMAN CARTILAGE OLIGOMERIC MATRIX PROTEIN  
Rec. HUMAN CNTF  
Rec. RAT CNTF  
Rec. HUMAN CTHRP 1  
Rec. HUMAN CYTOKINE-LIKE PROTEIN 1

**D** Rec. HUMAN DKK-1  
Rec. HUMAN ENPP1

**F** Rec. HUMAN FETUIN-A (AHSG)  
Nat. HUMAN FETUIN-A (AHSG)  
Rec. HUMAN FETUIN-B  
Rec. HUMAN FGF-8  
Rec. HUMAN FOLLISTATIN

**G** Rec. HUMAN GASP-1  
Rec. HUMAN GCP-2  
Rec. HUMAN GDF-7  
Rec. HUMAN GREMLIN-1

**O** Rec. HUMAN IGF-I  
Rec. MURINE IGF-I  
Rec. HUMAN INTERLEUKIN-34

**L** Nat. HUMAN LACTOFERRIN

**M** Rec. HUMAN MMP-1  
Rec. HUMAN MMP-2  
Rec. HUMAN MMP-3

**O** Rec. HUMAN ONCOSTATIN M  
Rec. RAT ONCOSTATIN M  
Rec. HUMAN OSTEOACTIVIN/GPNMB  
Rec. HUMAN OSTEOBLAST SPECIFIC FACTOR 1  
Rec. HUMAN OSTEOBLAST SPECIFIC FACTOR 2  
Rec. HUMAN OSTEOCRIN  
Rec. HUMAN OSTEOPONTIN  
Rec. HUMAN OSTEOPROTEGERIN  
Rec. HUMAN OSTEOSTAT

**P** Rec. HUMAN PDGF-AA  
Rec. MURINE PDGF-AA  
Rec. HUMAN PDGF-AB  
Rec. HUMAN PDGF-BB  
Rec. MURINE PDGF-BB  
Rec. HUMAN PDGF-CC  
Rec. HUMAN PHOSPHOETHANOLAMINE/PHOSPHOCHOLINE PHOSPHATASE  
Rec. HUMAN PTHrP  
Rec. HUMAN REGUCALCIN

**S** Rec. HUMAN SCGF- $\alpha$   
Rec. HUMAN SCGF- $\beta$   
Rec. HUMAN SCLEROSTIN  
Rec. HUMAN SONIC HEDGEHOG (SHH)  
Rec. MURINE SONIC HEDGEHOG (SHH)  
Rec. HUMAN SPARC/OSTEONECTIN  
Rec. HUMAN sRANK LIGAND  
Rec. MURINE sRANK LIGAND  
Rec. RAT sRANK LIGAND  
Rec. HUMAN STANNIOCALCIN 1  
Rec. HUMAN STANNIOCALCIN 2

**T** Rec. HUMAN TSG

**W** Rec. HUMAN WISP-3  
Rec. HUMAN WNT1-INDUCIBLE-SIGNALING PATHWAY PROTEIN 1  
Rec. MURINE WNT-3A

## CARDIOVASCULAR DISEASE

Rec. HUMAN 4-1BB LIGAND

Rec. HUMAN 6-PHOSPHOGLUCONATE DEHYDROGENASE, DECARBOXYLATING

**A** Rec. HUMAN  
Rec. RAT  
Rec. MURINE  
Rec. HUMAN ALLOGRAFT INFLAMMATORY FACTOR 1  
Rec. HUMAN AMINOACYLASE-1  
Rec. HUMAN ANG-1  
Rec. HUMAN ANG-2  
Rec. HUMAN APOA-1  
Rec. HUMAN APOE2  
Rec. HUMAN APOE3



# PROTEINS INDEX

	Rec.	HUMAN	APOE4		Rec.	HUMAN	GLUCOSE-REGULATED PROTEIN 78	
	Rec.	HUMAN	APO-SAA1		Rec.	RAT	GRO/KC	
<b>B</b>	Rec.	HUMAN	BMP-3		Rec.	HUMAN	GRO/MGSA	
	Rec.	HUMAN	BMP-6		Rec.	HUMAN	GRO-β	
					Rec.	RAT	GRO-β/MIP-2	
<b>C</b>	Rec.	HUMAN	CARDIOTROPHIN 1		Rec.	HUMAN	GRO-γ	
	Rec.	MURINE	CARDIOTROPHIN-1		Rec.	MURINE	GRO-γ	
	Rec.	HUMAN	CNTF		<b>H</b>	Rec.	HUMAN	HB-EGF
	Rec.	RAT	CNTF			Rec.	HUMAN	HEART FABP
	Rec.	HUMAN	CTHRP 1			Rec.	HUMAN	HEREGULINβ-1
	Rec.	HUMAN	CTGF		<b>I</b>	Rec.	MURINE	IFN-γ
	Rec.	HUMAN	CTGFL/WISP-2			Rec.	RAT	IFN-γ
	Rec.	HUMAN	CTRP9A			Rec.	HUMAN	IGF-I
	Rec.	HUMAN	CYCLOPHILIN A			Rec.	MURINE	IGF-I
	Rec.	MOUSE	CYCLOPHILIN A			Rec.	HUMAN	INTERLEUKIN-1β
	Rec.	RAT	CYCLOPHILIN A			Rec.	MURINE	INTERLEUKIN-1β
	Rec.	HUMAN	CYR61			Rec.	RAT	INTERLEUKIN-1β
<b>D</b>	Rec.	HUMAN	DECORIN			Rec.	HUMAN	INTERLEUKIN-17B
<b>E</b>	Rec.	HUMAN	EGF			Rec.	HUMAN	INTERLEUKIN-17D
	Rec.	MURINE	EGF			Rec.	HUMAN	INTERLEUKIN-19
	Rec.	RAT	EGF			Rec.	HUMAN	INTERLEUKIN-24
	Rec.	HUMAN	EGF RECEPTOR (EGFR)			Rec.	HUMAN	INTERLEUKIN-33
	Rec.	HUMAN	EG-VEGF			Rec.	MURINE	INTERLEUKIN-33
	Rec.	HUMAN	ENA-78		<b>J</b>	Rec.	MURINE	JE/MCP-1
	Rec.	HUMAN	ENA-78 (5-78 a.a.)		<b>K</b>	Rec.	HUMAN	KALLISTATIN
	Rec.	HUMAN	ENDOTHELIAL LIPASE			Rec.	MURINE	KC
	Rec.	HUMAN	EPIDERMAL FABP , Tag-free			Rec.	HUMAN	KGF
<b>F</b>	Nat.	HUMAN	FETUIN-A (AHSG)		<b>L</b>	Rec.	HUMAN	LECITHIN-CHOLESTEROL ACYLTRANSFERASE
	Rec.	HUMAN	FGF-10			Rec.	MURINE	LIX [70a.a.]
	Rec.	HUMAN	FGF-16			Rec.	MURINE	LIX [92a.a.]
	Rec.	HUMAN	FGF-17		<b>M</b>	Rec.	HUMAN	MASPIN
	Rec.	HUMAN	FGF-18			Rec.	HUMAN	MCP-2
	Rec.	HUMAN	FGF-20			Rec.	MURINE	MCP-2
	Rec.	HUMAN	FGF-4			Rec.	HUMAN	MCP-3
	Rec.	HUMAN	FGF-5			Rec.	MURINE	MCP-3
	Rec.	HUMAN	FGF-6			Rec.	HUMAN	MCP-4
	Rec.	HUMAN	FGF-8			Rec.	MURINE	MCP-5
	Rec.	HUMAN	FGF-9			Rec.	HUMAN	MIG
	Rec.	MURINE	FGF-9			Rec.	MURINE	MIG
	Rec.	HUMAN	FGF-ACIDIC			Rec.	HUMAN	MMP-1
	Rec.	MURINE	FGF-ACIDIC			Rec.	HUMAN	MMP-2
	Rec.	RAT	FGF-ACIDIC			Rec.	HUMAN	MMP-3
	Rec.	HUMAN	FGF-BASIC		<b>N</b>	Rec.	HUMAN	NATRIURETIC PEPTIDES A
	Rec.	MURINE	FGF-BASIC			Rec.	HUMAN	NATRIURETIC PEPTIDES B
	Rec.	RAT	FGF-BASIC			Rec.	HUMAN	NOV
<b>G</b>	Rec.	HUMAN	GASP-1		<b>O</b>	Rec.	HUMAN	ONCOSTATIN M
	Rec.	HUMAN	GCP-2			Rec.	RAT	ONCOSTATIN M
	Rec.	HUMAN	G-CSF			Rec.	HUMAN	OSTEOBLAST SPECIFIC FACTOR 2
	Rec.	MURINE	G-CSF			Rec.	HUMAN	OSTEOPONTIN
	Rec.	HUMAN	GDF-15/MIC-1		<b>P</b>	Rec.	HUMAN	PARAOXONASE 1
	Rec.	HUMAN	GDF-2			Rec.	HUMAN	PDGF-AA
	Rec.	HUMAN	GDF-5 (BMP-14/CDMP-1)					
	Rec.	MURINE	GDF-5 (BMP-14/CDMP-1)					
	Rec.	HUMAN	GDNF					
	Rec.	MURINE	GDNF					
	Rec.	RAT	GDNF					

# PROTEINS INDEX

Rec.	MURINE	PDGF-AA
Rec.	HUMAN	PDGF-AB
Rec.	HUMAN	PDGF-BB
Rec.	MURINE	PDGF-BB
Rec.	HUMAN	PDGF-CC
Rec.	HUMAN	PENTRAXIN 3
Rec.	HUMAN	PEPTIDOGLYCAN RECOGNITION PROTEIN 1
Rec.	HUMAN	PF-4
Rec.	MURINE	PF-4
Rec.	HUMAN	PLGF-1
Rec.	HUMAN	PLGF-2
Rec.	HUMAN	PLGF-3
Rec.	HUMAN	PTHrP

<b>R</b>	Rec.	HUMAN	RANTES
	Rec.	MURINE	RANTES
	Rec.	RAT	RANTES
	Rec.	HUMAN	RENIN
	Rec.	HUMAN	RENIN RECEPTOR
	Rec.	HUMAN	R-SPONDIN-3

<b>S</b>	Rec.	HUMAN	S100A1
	Rec.	HUMAN	S100A10
	Rec.	HUMAN	S100A11
	Rec.	HUMAN	S100A13
	Rec.	HUMAN	S100A4
	Rec.	HUMAN	S100G
	Rec.	HUMAN	S100P
	Rec.	HUMAN	SCD40 LIGAND
	Rec.	MURINE	SCD40 LIGAND
	Rec.	HUMAN	SDLL-1
	Rec.	HUMAN	SDLL-4
	Rec.	HUMAN	SERGLYCIN
	Rec.	HUMAN	sFRP-1
	Rec.	HUMAN	SPARC/OSTEONECTIN

<b>T</b>	Rec.	HUMAN	TGF-ALPHA
	Rec.	HUMAN	TGF-BETA 1
	Rec.	HUMAN	TGF-BETA 1
	Rec.	HUMAN	TGF-BETA 2
	Rec.	HUMAN	TGF-BETA 3
	Rec.	HUMAN	TGF-β2
	Rec.	HUMAN	THROMBOMODULIN
	Rec.	HUMAN	TL-1A
	Rec.	HUMAN	TNF-β

<b>U</b>	Rec.	HUMAN	UBIQUITIN CARBOXYL-TERMINAL HYDROLASE ISOZYME L1
----------	------	-------	--

<b>V</b>	Rec.	HUMAN	VEGF121
	Rec.	HUMAN	VEGF165
	Rec.	MURINE	VEGF165
	Rec.	RAT	VEGF165
	Rec.	HUMAN	VEGF-B
	Rec.	HUMAN	VEGF-D

<b>W</b>	Rec.	HUMAN	WISP-3
	Rec.	HUMAN	β-NGF
	Rec.	MURINE	β-NGF

## CELL SURFACE PROTEINS (SCD)

<b>D</b>	Rec.	HUMAN	DIPEPTIDYL PEPTIDASE IV (DPIV)
----------	------	-------	--------------------------------

## CORONARY ARTERY DISEASE

<b>A</b>	Nat.	HUMAN	ADIPONECTIN
	Rec.	HUMAN	ADIPONECTIN
	Rec.	HUMAN	ADIPONECTIN (HMW-rich), Tag-free
	Rec.	HUMAN	ADIPONECTIN (Trimeric form)
	Rec.	MOUSE	ADIPONECTIN
	Rec.	MOUSE	ADIPONECTIN (Trimeric form)
	Rec.	PORCINE	ADIPONECTIN
	Rec.	RAT	ADIPONECTIN
	Rec.	HUMAN	ADIPONECTIN (GLOBULAR)
	Rec.	MURINE	ADIPONECTIN
	Rec.	HUMAN	ADIPONECTIN SOLUTION

<b>B</b>	Rec.	HUMAN	BMP-3
	Rec.	HUMAN	BMP-6

<b>C</b>	Rec.	MURINE	CARDIOTROPHIN-1
	Rec.	HUMAN	CNTF
	Rec.	RAT	CNTF
	Rec.	HUMAN	CTHRP 1
	Rec.	HUMAN	CTGF
	Rec.	HUMAN	CTGFL/WISP-2
	Rec.	HUMAN	CYR61

<b>E</b>	Rec.	HUMAN	EGF
	Rec.	MURINE	EGF
	Rec.	RAT	EGF
	Rec.	HUMAN	EGF RECEPTOR (EGFR)
	Rec.	HUMAN	EG-VEGF
	Rec.	HUMAN	ENA-78
	Rec.	HUMAN	ENA-78 (5-78 a.a.)

<b>F</b>	Rec.	HUMAN	FGF-10
	Rec.	HUMAN	FGF-16
	Rec.	HUMAN	FGF-17
	Rec.	HUMAN	FGF-18
	Rec.	HUMAN	FGF-20
	Rec.	HUMAN	FGF-4
	Rec.	HUMAN	FGF-5
	Rec.	HUMAN	FGF-6
	Rec.	HUMAN	FGF-8
	Rec.	HUMAN	FGF-9
	Rec.	MURINE	FGF-9
	Rec.	HUMAN	FGF-ACIDIC
	Rec.	MURINE	FGF-ACIDIC
	Rec.	RAT	FGF-ACIDIC
	Rec.	HUMAN	FGF-BASIC
	Rec.	MURINE	FGF-BASIC
	Rec.	RAT	FGF-BASIC

<b>G</b>	Rec.	HUMAN	GASP-1
	Rec.	HUMAN	GCP-2
	Rec.	HUMAN	G-CSF
	Rec.	MURINE	G-CSF
	Rec.	HUMAN	GDF-2

# PROTEINS INDEX

Rec.	HUMAN	GDNF			
Rec.	MURINE	GDNF			
Rec.	RAT	GDNF			
Rec.	RAT	GRO/KC			
Rec.	HUMAN	GRO/MGSA			
Rec.	HUMAN	GRO- $\beta$			
Rec.	RAT	GRO- $\beta$ /MIP-2			
Rec.	HUMAN	GRO- $\gamma$			
Rec.	MURINE	GRO- $\gamma$			
<hr/>					
<b>H</b>	Rec.	HUMAN	HB-EGF		
	Rec.	HUMAN	HEREGULIN $\beta$ -1		
<hr/>					
<b>I</b>	Rec.	MURINE	IFN- $\gamma$		
	Rec.	RAT	IFN- $\gamma$		
	Rec.	HUMAN	IGF-I		
	Rec.	MURINE	IGF-I		
	Rec.	HUMAN	INTERLEUKIN-1 $\beta$		
	Rec.	MURINE	INTERLEUKIN-1 $\beta$		
	Rec.	RAT	INTERLEUKIN-1 $\beta$		
	Rec.	HUMAN	INTERLEUKIN-17B		
	Rec.	HUMAN	INTERLEUKIN-17D		
	Rec.	HUMAN	INTERLEUKIN-19		
	Rec.	HUMAN	INTERLEUKIN-24		
<hr/>					
<b>J</b>	Rec.	MURINE	JE/MCP-1		
<hr/>					
<b>K</b>	Rec.	MURINE	KC		
	Rec.	HUMAN	KGF		
<hr/>					
<b>L</b>	Rec.	MURINE	LIX [70a.a.]		
	Rec.	MURINE	LIX [92a.a.]		
<hr/>					
<b>M</b>	Rec.	HUMAN	MASPIN		
	Rec.	HUMAN	MCP-2		
	Rec.	MURINE	MCP-2		
	Rec.	HUMAN	MCP-3		
	Rec.	MURINE	MCP-3		
	Rec.	HUMAN	MCP-4		
	Rec.	MURINE	MCP-5		
	Rec.	HUMAN	MIG		
	Rec.	MURINE	MIG		
	Rec.	HUMAN	MMP-1		
	Rec.	HUMAN	MMP-2		
	Rec.	HUMAN	MMP-3		
<hr/>					
<b>N</b>	Rec.	HUMAN	NOV		
<hr/>					
<b>O</b>	Rec.	HUMAN	ONCOSTATIN M		
	Rec.	RAT	ONCOSTATIN M		
<hr/>					
<b>P</b>	Rec.	HUMAN	PDGF-AA		
	Rec.	MURINE	PDGF-AA		
	Rec.	HUMAN	PDGF-AB		
	Rec.	HUMAN	PDGF-BB		
	Rec.	MURINE	PDGF-BB		
	Rec.	HUMAN	PDGF-CC		
	Rec.	HUMAN	PF-4		
	Rec.	MURINE	PF-4		
	Rec.	HUMAN	PLGF-1		
	Rec.	HUMAN	PLGF-2		
	Rec.	HUMAN	PLGF-3		
	Rec.	HUMAN	PTHrP		
<hr/>					
<b>R</b>	Rec.	HUMAN	RANTES		
	Rec.	MURINE	RANTES		
	Rec.	RAT	RANTES		
	Rec.	HUMAN	R-SPONDIN-3		
<hr/>					
<b>S</b>	Rec.	HUMAN	S100A9		
	Rec.	HUMAN	SCD40 LIGAND		
	Rec.	MURINE	SCD40 LIGAND		
	Rec.	HUMAN	SDLL-1		
	Rec.	HUMAN	SDLL-4		
	Rec.	HUMAN	sFRP-1		
	Rec.	HUMAN	SPARC/OSTEONECTIN		
<hr/>					
<b>T</b>	Rec.	HUMAN	TGF-ALPHA		
	Rec.	HUMAN	TGF-BETA 1		
	Rec.	HUMAN	TGF-BETA 1		
	Rec.	HUMAN	TGF-BETA 2		
	Rec.	HUMAN	TGF-BETA 3		
	Rec.	HUMAN	TGF- $\beta$ 2		
	Rec.	HUMAN	THROMBOMODULIN		
	Rec.	HUMAN	TL-1A		
	Rec.	HUMAN	TNF- $\beta$		
<hr/>					
<b>V</b>	Rec.	HUMAN	VEGF121		
	Rec.	HUMAN	VEGF165		
	Rec.	MURINE	VEGF165		
	Rec.	RAT	VEGF165		
	Rec.	HUMAN	VEGF-B		
	Rec.	HUMAN	VEGF-D		
<hr/>					
<b>W</b>	Rec.	HUMAN	WISP-3		
<hr/>					
<b><math>\beta</math></b>	Rec.	HUMAN	$\beta$ -NGF		
	Rec.	MURINE	$\beta$ -NGF		

## CYTOKINES AND CHEMOKINES AND RELATED MOLECULES

<b>A</b>	Rec.	MURINE	APRIL		
	Rec.	HUMAN	APRIL		
<hr/>					
<b>B</b>	Rec.	HUMAN	BCA-1/BLC		
	Rec.	MURINE	BCA-1/BLC		
	Rec.	HUMAN	BRAK		
<hr/>					
<b>C</b>	Rec.	MURINE	C10		
	Rec.	HUMAN	CCL19 (MIP-3 $\beta$ )		
	Rec.	HUMAN	CCL2 (MCP-1)		
	Rec.	HUMAN	CCL27 (CTACK)		
	Rec.	HUMAN	CCL28 (MEC)		
	Rec.	HUMAN	CCL3 (MIP-1 $\alpha$ )		
	Rec.	HUMAN	CCL5 (RANTES)		
	Rec.	HUMAN	CCL7 (MCP-3)		
	Rec.	HUMAN	CCL7 (MCP-3)		
	Rec.	HUMAN	CTACK		
	Rec.	MURINE	CTACK		
	Rec.	HUMAN	CTRP1		

# PROTEINS INDEX

Rec. HUMAN CTRP3  
 Rec. HUMAN CTRP9A  
 Rec. HUMAN CXCL12 (SDF-1 $\alpha$ )  
 Rec. HUMAN CXCL12 (SDF-1 $\alpha$ ) (Biotinylated)  
 Rec. HUMAN CXCL12 (SDF-1 $\alpha$ )  
 Rec. HUMAN CXCL16  
 Rec. MURINE CXCL16  
 Rec. HUMAN CXCL8 (IL-8)

**E** Rec. HUMAN ENA-78  
 Rec. HUMAN ENA-78 (5-78 a.a.)  
 Rec. HUMAN EOTAXIN  
 Rec. MURINE EOTAXIN  
 Rec. HUMAN EOTAXIN-3  
 Rec. HUMAN EXODUS-2  
 Rec. MURINE EXODUS-2

**G** Rec. HUMAN GCP-2  
 Rec. HUMAN GDF-15/MIC-1  
 Rec. HUMAN GM-CSF  
 Rec. MURINE GM-CSF  
 Rec. RAT GM-CSF  
 Rec. RAT GRO/KC  
 Rec. HUMAN GRO/MGSA  
 Rec. HUMAN GRO- $\beta$   
 Rec. RAT GRO- $\beta$ /MIP-2  
 Rec. HUMAN GRO- $\gamma$   
 Rec. MURINE GRO- $\gamma$

**H** Rec. HUMAN HEPATOCYTE GROWTH FACTOR  
 Rec. MURINE HEPATOCYTE GROWTH FACTOR

**I** Rec. HUMAN I-309  
 Rec. HUMAN IFN- $\gamma$   
 Rec. HUMAN IFN- $\omega$   
 Rec. HUMAN INTERLEUKIN-1 $\alpha$   
 Rec. MURINE INTERLEUKIN-1 $\alpha$   
 Rec. RAT INTERLEUKIN-1 $\alpha$   
 Rec. HUMAN INTERLEUKIN-1 $\beta$   
 Rec. MURINE INTERLEUKIN-1 $\beta$   
 Rec. RAT INTERLEUKIN-1 $\beta$   
 Rec. HUMAN INTERLEUKIN-2  
 Rec. HUMAN INTERLEUKIN-4  
 Rec. MURINE INTERLEUKIN-4  
 Rec. RAT INTERLEUKIN-4  
 Rec. HUMAN INTERLEUKIN-5  
 Rec. MURINE INTERLEUKIN-5  
 Rec. RAT INTERLEUKIN-5  
 Rec. HUMAN INTERLEUKIN-6  
 Rec. MURINE INTERLEUKIN-6  
 Rec. RAT INTERLEUKIN-6  
 Rec. HUMAN INTERLEUKIN-7  
 Rec. MURINE INTERLEUKIN-7  
 Rec. RAT INTERLEUKIN-7  
 Rec. HUMAN INTERLEUKIN-8  
 Rec. HUMAN INTERLEUKIN-9  
 Rec. MURINE INTERLEUKIN-9  
 Rec. RAT INTERLEUKIN-9  
 Rec. HUMAN INTERLEUKIN-10  
 Rec. MURINE INTERLEUKIN-10

Rec. RAT INTERLEUKIN-10  
 Rec. HUMAN INTERLEUKIN-12  
 Rec. MURINE INTERLEUKIN-12  
 Rec. HUMAN INTERLEUKIN-12 p80  
 Rec. HUMAN INTERLEUKIN-13  
 Rec. MURINE INTERLEUKIN-13  
 Rec. RAT INTERLEUKIN-13  
 Rec. HUMAN INTERLEUKIN-13 VARIANT  
 Rec. HUMAN INTERLEUKIN-15  
 Rec. MURINE INTERLEUKIN-15  
 Rec. RAT INTERLEUKIN-15  
 Rec. HUMAN INTERLEUKIN-17F  
 Rec. MURINE INTERLEUKIN-17F  
 Rec. HUMAN INTERLEUKIN-21  
 Rec. MURINE INTERLEUKIN-21  
 Rec. HUMAN INTERLEUKIN-22  
 Rec. MURINE INTERLEUKIN-22  
 Rec. HUMAN INTERLEUKIN-23  
 Rec. HUMAN INTERLEUKIN-31  
 Rec. MURINE INTERLEUKIN-31  
 Rec. HUMAN INTERLEUKIN-33  
 Rec. MURINE INTERLEUKIN-33  
 Rec. HUMAN IP-10  
 Rec. RAT IP-10  
 Rec. HUMAN I-TAC  
 Rec. MURINE I-TAC

**J** Rec. MURINE JE/MCP-1

**K** Rec. MURINE KC

**L** Rec. HUMAN LAG-1  
 Rec. HUMAN LD78 $\beta$   
 Rec. HUMAN LEC  
 Rec. HUMAN LIF  
 Rec. MURINE LIGHT  
 Rec. HUMAN LIGHT  
 Rec. MURINE LIX [70a.a.]  
 Rec. MURINE LIX [92a.a.]  
 Rec. MURINE LUNGKINE

**M** Rec. HUMAN MCP-2  
 Rec. MURINE MCP-2  
 Rec. HUMAN MCP-3  
 Rec. MURINE MCP-3  
 Rec. HUMAN MCP-4  
 Rec. MURINE MCP-5  
 Rec. HUMAN MDC  
 Rec. MURINE MDC  
 Rec. HUMAN MEC  
 Rec. MURINE MEC  
 Rec. HUMAN MIF  
 Rec. HUMAN MIG  
 Rec. MURINE MIG  
 Rec. HUMAN MIP-1 $\alpha$   
 Rec. MURINE MIP-1 $\alpha$   
 Rec. RAT MIP-1 $\alpha$   
 Rec. HUMAN MIP-1 $\beta$   
 Rec. MURINE MIP-1 $\beta$   
 Rec. RAT MIP-1 $\beta$

# PROTEINS INDEX

Rec. HUMAN MIP-3  
 Rec. HUMAN MIP-3 $\alpha$   
 Rec. MURINE MIP-3 $\alpha$   
 Rec. HUMAN MIP-3 $\beta$   
 Rec. MURINE MIP-3 $\beta$   
 Rec. HUMAN MIP-4  
 Rec. HUMAN MIP-5  
 Rec. RAT MONOCYTE CHEMOTACTIC PROTEIN-1

**N** Rec. HUMAN NAP-2  
 Rec. MURINE NEUROPOIETIN  
 Rec. HUMAN NP-1

**O** Rec. HUMAN OSTEOBLAST SPECIFIC FACTOR 1  
 Rec. HUMAN OSTEOBLAST SPECIFIC FACTOR 2  
 Rec. HUMAN OTOR

**P** Rec. HUMAN PF-4  
 Rec. MURINE PF-4

**R** Rec. HUMAN RANTES  
 Rec. MURINE RANTES  
 Rec. RAT RANTES

**S** Rec. HUMAN SCD100  
 Rec. MURINE SDF-1 $\alpha$   
 Rec. RAT SDF-1 $\alpha$   
 Rec. HUMAN SDF-1 $\beta$   
 Rec. MURINE SDF-1 $\beta$   
 Rec. RAT SDF-1 $\beta$   
 Rec. HUMAN SLIT2-N

**T** Rec. HUMAN TAFA-2  
 Rec. HUMAN TARC  
 Rec. HUMAN TECK  
 Rec. HUMAN TNF- $\alpha$   
 Rec. MURINE TNF- $\alpha$   
 Rec. RAT TNF- $\alpha$

**V** Rec. HUMAN VEGF-C  
 Rec. HUMAN VEGF-R1/FLT-1  
 Rec. HUMAN VISFATIN

**$\beta$**  Rec. HUMAN  $\beta$ -NGF  
 Rec. MURINE  $\beta$ -NGF

Rec. MURINE ADIPONECTIN  
 Rec. HUMAN ADIPONECTIN SOLUTION  
 Rec. HUMAN APOLIPOPROTEIN M

**B** Rec. HUMAN BETATROPHIN  
 Rec. MOUSE BETATROPHIN  
 Rec. RAT BETATROPHIN

**C** Rec. HUMAN CNTF  
 Rec. RAT CNTF

**D** Rec. HUMAN DIPEPTIDYL PEPTIDASE IV (DPIV)

**E** Rec. HUMAN ENPP1  
 Rec. HUMAN EPIDERMAL FABP , Tag-free

**F** Rec. HUMAN FAM3B  
 Rec. HUMAN FIBROBLAST GROWTH FACTOR 21  
 Rec. HUMAN FIBROBLAST GROWTH FACTOR 21 , Tag-free  
 Rec. MOUSE FIBROBLAST GROWTH FACTOR 21  
 Rec. MOUSE FIBROBLAST GROWTH FACTOR 21 , Tag-free

**G** Rec. MURINE GACRP30  
 Rec. HUMAN GANGLIOSIDE GM2 ACTIVATOR  
 Rec. HUMAN GASP-1  
 Rec. HUMAN G-CSF  
 Rec. MURINE G-CSF  
 Rec. HUMAN GDF-3  
 Rec. HUMAN GHRELIN - ACYLATED (GHRELIN-28)  
 Rec. HUMAN GLP-1/GLUCAGON-LIKE PEPTIDE  
 Rec. HUMAN GLUCAGON-LIKE PEPTIDE-1 RECEPTOR

**H** Rec. HUMAN HEAT SHOCK 70kDa PROTEIN 1A/1B

**I** Rec. MURINE IFN- $\gamma$   
 Rec. RAT IFN- $\gamma$   
 Rec. HUMAN IGF-BP1  
 Rec. HUMAN IGF-BP2  
 Rec. HUMAN IGF-BP3  
 Rec. HUMAN IGF-BP4  
 Rec. HUMAN IGF-BP5  
 Rec. HUMAN IGF-BP6  
 Rec. HUMAN IGF-BP7  
 Rec. HUMAN IGF-I  
 Rec. MURINE IGF-I  
 Rec. HUMAN INSL5/INSL7 HYBRID  
 Rec. HUMAN INSULIN RECEPTOR  
 Rec. HUMAN INTERLEUKIN-1RA  
 Rec. HUMAN INTERLEUKIN-1 $\alpha$   
 Rec. MURINE INTERLEUKIN-1 $\alpha$   
 Rec. RAT INTERLEUKIN-1 $\alpha$   
 Rec. HUMAN INTERLEUKIN-1 $\beta$   
 Rec. MURINE INTERLEUKIN-1 $\beta$   
 Rec. RAT INTERLEUKIN-1 $\beta$   
 Rec. HUMAN INTERLEUKIN-36RA  
 Rec. HUMAN INTERLEUKIN-36 $\beta$   
 Rec. HUMAN INTERLEUKIN-36 $\gamma$

**K** Rec. HUMAN KALLISTATIN

## DIABETOLOGY

**A** Nat. HUMAN ADIPOCYTE FABP  
 Rec. HUMAN ADIPOCYTE FABP, Tag-free  
 Nat. HUMAN ADIPONECTIN  
 Rec. HUMAN ADIPONECTIN  
 Rec. HUMAN ADIPONECTIN (HMW-RICH), Tag-free  
 Rec. HUMAN ADIPONECTIN (Trimeric form)  
 Rec. MOUSE ADIPONECTIN  
 Rec. MOUSE ADIPONECTIN (Trimeric form)  
 Rec. PORCINE ADIPONECTIN  
 Rec. RAT ADIPONECTIN  
 Rec. HUMAN ADIPONECTIN (GLOBULAR)

# PROTEINS INDEX

<b>L</b>	Rec.	HUMAN	LEPTIN, Tag-free
	Rec.	MOUSE	LEPTIN, Tag-free
	Rec.	RAT	LEPTIN, Tag-free
	Rec.	HUMAN	LEUKOCYTE CELL-DERIVED CHEMOTAXIN-2

<b>N</b>	Rec.	HUMAN	NNT-1/BCSF-3
	Rec.	HUMAN	NT-4

<b>O</b>	Rec.	HUMAN	OMENTIN
	Rec.	HUMAN	OSTEOPONTIN

<b>P</b>	Rec.	HUMAN	PAI-2
----------	------	-------	-------

<b>R</b>	Rec.	HUMAN	REGENERATING PROTEIN 1 ALPHA
	Rec.	HUMAN	REGENERATING PROTEIN 1 BETA
	Rec.	HUMAN	REGENERATING PROTEIN 4
	Rec.	HUMAN	RELAXIN-2
	Rec.	HUMAN	RELAXIN-3
	Rec.	HUMAN	RENIN
	Rec.	HUMAN	RENIN RECEPTOR
	Rec.	HUMAN	RESISTIN
	Rec.	MOUSE	RESISTIN
	Rec.	RAT	RESISTIN
	Rec.	HUMAN	RESISTIN, Tag-free
Rec.	HUMAN	RETINOL BINDING PROTEIN 4	

<b>S</b>	Rec.	HUMAN	SCD30 LIGAND
	Rec.	HUMAN	SECRETAGOGIN
	Rec.	RAT	SECRETAGOGIN
	Rec.	HUMAN	sFRP4
	Rec.	HUMAN	sRAGE

<b>V</b>	Rec.	HUMAN	VASPIN
----------	------	-------	--------

<b>β</b>	Rec.	HUMAN	β-NGF
	Rec.	MURINE	β-NGF

## ENERGY METABOLISM AND BODY WEIGHT REGULATION

<b>A</b>	Nat.	HUMAN	ADIPOCYTE FABP
	Rec.	HUMAN	ADIPOCYTE FABP, Tag-free
	Nat.	HUMAN	ADIPONECTIN
	Rec.	HUMAN	ADIPONECTIN
	Rec.	HUMAN	ADIPONECTIN (HMW-RICH), Tag-free
	Rec.	HUMAN	ADIPONECTIN (Trimeric form)
	Rec.	MOUSE	ADIPONECTIN
	Rec.	MOUSE	ADIPONECTIN (Trimeric form)
	Rec.	PORCINE	ADIPONECTIN
	Rec.	RAT	ADIPONECTIN
	Rec.	HUMAN	ADIPONECTIN (GLOBULAR)
	Rec.	MURINE	ADIPONECTIN
	Rec.	HUMAN	ADIPONECTIN SOLUTION
	Rec.	HUMAN	ADIPOPHILIN
	Rec.	HUMAN	AGOUTI-RELATED PROTEIN
	Rec.	HUMAN	ANGIPOIETIN-LIKE PROTEIN 3
	Rec.	HUMAN	ANGIPOIETIN-LIKE PROTEIN 4
	Rec.	HUMAN	ANGIPOIETIN-LIKE PROTEIN 6
	Rec.	HUMAN	APOLIPOPROTEIN D
	Rec.	HUMAN	APOLIPOPROTEIN M

<b>B</b>	Rec.	HUMAN	BETATROPHIN
	Rec.	MOUSE	BETATROPHIN
	Rec.	RAT	BETATROPHIN

<b>C</b>	Rec.	HUMAN	CCL2 (MCP-1)
	Rec.	HUMAN	CELL DEATH-INDUCING DFFA-LIKE EFFECTOR C
	Rec.	HUMAN	CHEMERIN
	Rec.	HUMAN	CNTF
	Rec.	RAT	CNTF
	Rec.	HUMAN	CTHRP 1
	Rec.	HUMAN	CTRP1
	Rec.	HUMAN	CTRP2
	Rec.	HUMAN	CTRP3
	Rec.	HUMAN	CTRP6
	Rec.	HUMAN	CTRP7
Rec.	HUMAN	CTRP8	
Rec.	HUMAN	CTRP9A	

<b>D</b>	Rec.	HUMAN	DECORIN
----------	------	-------	---------

<b>E</b>	Rec.	HUMAN	ENPP1
	Rec.	HUMAN	EPIDERMAL FABP, Tag-free

<b>F</b>	Rec.	HUMAN	FAM3B
	Rec.	HUMAN	FABP 12
	Rec.	HUMAN	FETUIN-B
	Rec.	MOUSE	FIBROBLAST GROWTH FACTOR 15
	Rec.	HUMAN	FIBROBLAST GROWTH FACTOR 19
	Rec.	HUMAN	FIBROBLAST GROWTH FACTOR 21
	Rec.	HUMAN	FIBROBLAST GROWTH FACTOR 21, Tag-free
	Rec.	MOUSE	FIBROBLAST GROWTH FACTOR 21
	Rec.	MOUSE	FIBROBLAST GROWTH FACTOR 21, Tag-free
	Rec.	HUMAN	FIBROBLAST GROWTH FACTOR 23 C-TERMINAL PEPTIDE

<b>G</b>	Rec.	HUMAN	gAcrp30/ADIPOLEAN
	Rec.	HUMAN	gAcrp30/ADIPOLEAN VARIANT
	Rec.	HUMAN	GANGLIOSIDE GM2 ACTIVATOR
	Rec.	HUMAN	GHRELIN - ACYLATED (GHRELIN-28)
	Rec.	HUMAN	GLP-1/GLUCAGON-LIKE PEPTIDE
	Rec.	HUMAN	GLUCAGON-LIKE PEPTIDE-1 RECEPTOR
	Rec.	HUMAN	GLUCOSE-REGULATED PROTEIN 78
	Rec.	HUMAN	GROWTH DIFFERENTIATION FACTOR-3

<b>H</b>	Rec.	HUMAN	HEART FABP
----------	------	-------	------------

<b>I</b>	Rec.	HUMAN	INSL5/INSL7 HYBRID
	Rec.	HUMAN	INSULIN RECEPTOR
	Rec.	HUMAN	INTERLEUKIN-6
	Rec.	MURINE	INTERLEUKIN-6
	Rec.	RAT	INTERLEUKIN-6
	Rec.	HUMAN	INTERLEUKIN-33
	Rec.	MURINE	INTERLEUKIN-33
	Rec.	HUMAN	IRISIN

<b>K</b>	Rec.	HUMAN	KALLISTATIN
----------	------	-------	-------------

<b>L</b>	Rec.	HUMAN	LEPTIN, Tag-free
	Rec.	MOUSE	LEPTIN, Tag-free
	Rec.	RAT	LEPTIN, Tag-free
	Rec.	HUMAN	LIPOCALIN-2/NGAL

# PROTEINS INDEX

<b>M</b>	Rec.	RAT	MONOCYTE CHEMOTACTIC PROTEIN-1
<b>N</b>	Rec.	HUMAN	NESFATIN-1
	Rec.	HUMAN	NEUDESIN
<b>O</b>	Rec.	HUMAN	OMENTIN
	Rec.	HUMAN	OSTEOPONTIN
<b>P</b>	Rec.	HUMAN	PAI-1
	Rec.	HUMAN	PARAOXONASE 1
	Rec.	HUMAN	PIGMENT EPITHELIUM-DERIVED FACTOR
<b>R</b>	Rec.	HUMAN	RELAXIN-3
	Rec.	HUMAN	RESISTIN
	Rec.	MOUSE	RESISTIN
	Rec.	RAT	RESISTIN
	Rec.	HUMAN	RESISTIN, Tag-free
	Rec.	MOUSE	RESISTIN-LIKE MOLECULE-ALPHA
	Rec.	HUMAN	RESISTIN-LIKE MOLECULE-BETA
	Rec.	MOUSE	RESISTIN-LIKE MOLECULE-GAMMA
	Rec.	HUMAN	RETINOL BINDING PROTEIN 4
	<b>T</b>	Rec.	HUMAN
Rec.		MURINE	TNF- $\alpha$
Rec.		RAT	TNF- $\alpha$
Rec.		HUMAN	TREFOIL FACTOR 1
Rec.		HUMAN	TREFOIL FACTOR 2
Rec.		HUMAN	TREFOIL FACTOR 3
Rec.		RAT	TREFOIL FACTOR 3
<b>V</b>	Rec.	HUMAN	VASPIN
	Rec.	HUMAN	VISFATIN
<b>Z</b>	Rec.	HUMAN	ZINC-ALPHA-2-GLYCOPROTEIN

## GROWTH HORMONE AND FACTOR-RELATED PRODUCTS

<b>E</b>	Rec.	HUMAN	EPIGEN
	Rec.	HUMAN	EPIREGULIN

## CHRONIC RENAL FAILURE

<b>A</b>	Nat.	HUMAN	ADIPONECTIN
	Rec.	HUMAN	ADIPONECTIN
	Rec.	HUMAN	ADIPONECTIN (HMW-RICH), Tag-free
	Rec.	HUMAN	ADIPONECTIN (Trimeric form)
	Rec.	MOUSE	ADIPONECTIN
	Rec.	MOUSE	ADIPONECTIN (Trimeric form)
	Rec.	PORCINE	ADIPONECTIN
	Rec.	RAT	ADIPONECTIN
	Rec.	HUMAN	ADIPONECTIN (GLOBULAR)
	Rec.	MURINE	ADIPONECTIN
	Rec.	HUMAN	ADIPONECTIN SOLUTION
	Rec.	HUMAN	PODOCIN

## IMMUNE RESPONSE, INFECTION AND INFLAMMATION

	Rec.	HUMAN	4-1BB LIGAND
<b>A</b>	Rec.	HUMAN	AITRL
	Rec.	HUMAN	ALLOGRAFT INFLAMMATORY FACTOR 1
	Nat.	HUMAN	ALPHA-1-ACID GLYCOPROTEIN
	Rec.	HUMAN	AMPHIREGULIN
	Rec.	HUMAN	APOLIPOPROTEIN M
<b>B</b>	Rec.	HUMAN	BCA-1/BLC
	Rec.	MURINE	BCA-1/BLC
	Rec.	HUMAN	BD-1
	Rec.	HUMAN	BD-4
<b>C</b>	Rec.	MURINE	C10
	Rec.	HUMAN	CLUB CELL PROTEIN (CC16)
	Rec.	MOUSE	CORTICOSTEROID-BINDING GLOBULIN
	Rec.	HUMAN	CTACK
	Rec.	MURINE	CTACK
	Rec.	HUMAN	CXCL12 (SDF-1 $\alpha$ )
	Rec.	HUMAN	CXCL12 (SDF-1 $\alpha$ )
	Rec.	HUMAN	CXCL16
	Rec.	MURINE	CXCL16
	Rec.	HUMAN	CXCL8 (IL-8)
Rec.	HUMAN	CYCLOPHILIN A	
Rec.	MOUSE	CYCLOPHILIN A	
Rec.	RAT	CYCLOPHILIN A	
<b>E</b>	Rec.	HUMAN	EOTAXIN
	Rec.	MURINE	EOTAXIN
	Rec.	HUMAN	EOTAXIN-3
	Rec.	HUMAN	E-SELECTIN
	Rec.	HUMAN	EXODUS-2
	Rec.	MURINE	EXODUS-2
<b>F</b>	Rec.	HUMAN	FETUIN-B
<b>G</b>	Rec.	HUMAN	GALECTIN-1
	Rec.	HUMAN	GALECTIN-3
	Rec.	HUMAN	GASTROKINE-1
	Rec.	HUMAN	GLUCOSE-REGULATED PROTEIN 78
	Rec.	HUMAN	GP96 (HSP90B1)
	Rec.	MURINE	GRANZYME B BACULOVIRUS
<b>H</b>	Rec.	HUMAN	HIGH MOBILITY GROUP PROTEIN B1
	Rec.	HUMAN	HSP90 CO-CHAPERONE CDC37
<b>I</b>	Rec.	HUMAN	I-309
	Rec.	HUMAN	IFN- $\beta$
	Rec.	MURINE	IFN- $\gamma$
	Rec.	RAT	IFN- $\gamma$
	Rec.	HUMAN	IFN- $\Lambda$ 1
	Rec.	HUMAN	IFN- $\Lambda$ 2
	Rec.	MURINE	IFN- $\Lambda$ 2
	Rec.	HUMAN	INTERLEUKIN-1 $\alpha$
	Rec.	MURINE	INTERLEUKIN-1 $\alpha$
	Rec.	RAT	INTERLEUKIN-1 $\alpha$
	Rec.	HUMAN	INTERLEUKIN-1 $\beta$

# PROTEINS INDEX

Rec.	MURINE	INTERLEUKIN-1 $\beta$	Rec.	HUMAN	PROCALCITONIN		
Rec.	RAT	INTERLEUKIN-1 $\beta$	Rec.	MOUSE	PROCALCITONIN		
Rec.	HUMAN	INTERLEUKIN-3	Rec.	PORCINE	PROCALCITONIN		
Rec.	MURINE	INTERLEUKIN-3	Rec.	RAT	PROCALCITONIN		
Rec.	HUMAN	INTERLEUKIN-8	Rec.	RHESUS	PROCALCITONIN		
Rec.	HUMAN	INTERLEUKIN-16	Nat.	HUMAN	PROSTATE-SPECIFIC ANTIGEN		
Rec.	HUMAN	INTERLEUKIN-17B					
Rec.	HUMAN	INTERLEUKIN-17D	<b>R</b>	Rec.	HUMAN	RANTES	
Rec.	HUMAN	INTERLEUKIN-17E	Rec.	MURINE	RANTES		
Rec.	HUMAN	INTERLEUKIN-19	Rec.	RAT	RANTES		
Rec.	HUMAN	INTERLEUKIN-34	Rec.	HUMAN	REGENERATING PROTEIN 1 ALPHA		
Rec.	HUMAN	INTERLEUKIN-36RA	Rec.	HUMAN	REGENERATING PROTEIN 4		
Rec.	HUMAN	INTERLEUKIN-36 $\beta$	Rec.	MURINE	RELM $\beta$		
Rec.	HUMAN	INTERLEUKIN-36 $\gamma$					
Rec.	RAT	INTERLEUKIN-3 $\beta$	<b>S</b>	Rec.	HUMAN	S100A4	
Rec.	HUMAN	IP-10	Rec.	HUMAN	S100A6		
Rec.	RAT	IP-10	Rec.	HUMAN	S100A8		
Rec.	HUMAN	I-TAC	Rec.	HUMAN	S100A9		
Rec.	MURINE	I-TAC	Rec.	HUMAN	S100A11		
			Rec.	HUMAN	S100A12		
<b>J</b>	Rec.	MURINE	JE/MCP-1	Rec.		SARS-CoV NUCLEOCAPSID PROTEIN	
				Rec.	HUMAN	SCD100	
<b>K</b>	Rec.	HUMAN	KALLISTATIN	Rec.	HUMAN	SCD14	
				Rec.	HUMAN	SCD22	
<b>L</b>	Nat.	HUMAN	LACTOFERRIN	Rec.	HUMAN	SCD23	
	Rec.	-	LYSOBACTER ENZYMOGENES ARG-C	Rec.	HUMAN	SCD27 LIGAND	
				Rec.	HUMAN	SCD30 LIGAND	
<b>M</b>	Rec.	HUMAN	MCP-2	Rec.	HUMAN	SCD40 LIGAND	
	Rec.	MURINE	MCP-2	Rec.	MURINE	SCD40 LIGAND	
	Rec.	HUMAN	MCP-3	Rec.	MURINE	SDF-1 $\alpha$	
	Rec.	MURINE	MCP-3	Rec.	RAT	SDF-1 $\alpha$	
	Rec.	HUMAN	MCP-4	Rec.	HUMAN	SDF-1 $\beta$	
	Rec.	MURINE	MCP-5	Rec.	MURINE	SDF-1 $\beta$	
	Rec.	HUMAN	MDC	Rec.	RAT	SDF-1 $\beta$	
	Rec.	MURINE	MDC	Rec.	HUMAN	SECRETOGLOBIN FAMILY 3A MEMBER 2	
	Rec.	HUMAN	MIG	Rec.	HUMAN	SERGLYCIN	
	Rec.	MURINE	MIG	Rec.	MURINE	SF-20	
	Rec.	HUMAN	MIP-1 $\alpha$	Rec.	HUMAN	sFAS LIGAND	
	Rec.	MURINE	MIP-1 $\alpha$	Rec.	HUMAN	sIL-2R $\alpha$	
	Rec.	RAT	MIP-1 $\alpha$	Rec.	HUMAN	sIL-4R $\alpha$	
	Rec.	HUMAN	MIP-1 $\beta$	Rec.	HUMAN	sIL-6R $\alpha$	
	Rec.	MURINE	MIP-1 $\beta$	Rec.	HUMAN	SONIC HEDGEHOG (SHH)	
	Rec.	RAT	MIP-1 $\beta$	Rec.	MURINE	SONIC HEDGEHOG (SHH)	
				Rec.	HUMAN	SOX40 LIGAND	
<b>N</b>	Rec.	HUMAN	NNT-1/BCSF-3	Rec.	HUMAN	sRANK LIGAND	
	Rec.	HUMAN	NP-1	Rec.	MURINE	sRANK LIGAND	
				Rec.	RAT	sRANK LIGAND	
<b>O</b>	Rec.	HUMAN	ONCOSTATIN M				
	Rec.	RAT	ONCOSTATIN M	<b>T</b>	Rec.	HUMAN	sTNF RECEPTOR TYPE I
	Rec.	HUMAN	OSTEOPONTIN	Rec.	HUMAN	sTNF RECEPTOR TYPE II	
				Rec.	HUMAN	TACI (TNFRSF13B)	
<b>P</b>	Rec.	HUMAN	PDGF-AA	Rec.	HUMAN	TARC	
	Rec.	MURINE	PDGF-AA	Rec.	HUMAN	TGF-BETA 1	
	Rec.	HUMAN	PDGF-AB	Rec.	HUMAN	TGF-BETA 1	
	Rec.	HUMAN	PDGF-BB	Rec.	HUMAN	TGF-BETA 2	
	Rec.	MURINE	PDGF-BB	Rec.	HUMAN	TGF-BETA 3	
	Rec.	HUMAN	PDGF-CC	Rec.	HUMAN	TGF- $\beta$ 2	
	Rec.	HUMAN	PENTRAXIN 3	Rec.	HUMAN	TNF- $\beta$	
	Rec.	HUMAN	PEPTIDOGLYCAN RECOGNITION PROTEIN 1	Rec.	HUMAN	TREFOIL FACTOR 1	
	Rec.	CANINE	PROCALCITONIN	Rec.	HUMAN	TREFOIL FACTOR 2	



# PROTEINS INDEX

**U** Rec. HUMAN ULBP5

**W** Rec. HUMAN WNT-1

## IMMUNOLOGY

**C** Rec. HUMAN CYCLOPHILIN B

**E** Rec. HUMAN EXODUS-2  
Rec. MURINE EXODUS-2

## INFLAMMATORY BOWEL DISEASE

**L** Nat. HUMAN LACTOFERRIN

**S** Rec. HUMAN S100A12

## IRON METABOLISM

**L** Nat. HUMAN LACTOFERRIN

## LIPOPROTEIN METABOLISM

**A** Rec. HUMAN APOLIPOPROTEIN A5  
Rec. HUMAN APOLIPOPROTEIN D  
Rec. HUMAN APOLIPOPROTEIN M

**B** Rec. HUMAN BETATROPHIN  
Rec. MOUSE BETATROPHIN  
Rec. RAT BETATROPHIN

**C** Rec. HUMAN CELL DEATH-INDUCING DFFA-LIKE EFFECTOR C

**E** Rec. HUMAN ENDOTHELIAL LIPASE

**I** Rec. HUMAN INSL5/INSL7 HYBRID

**L** Rec. HUMAN LECITHIN-CHOLESTEROL ACYLTRANSFERASE  
Rec. HUMAN LIPOPROTEIN LIPASE

**P** Rec. HUMAN PAF-AH  
Rec. HUMAN PARAOXONASE 1  
Rec. HUMAN RELAXIN-3

**S** Rec. HUMAN S100A12

**T** Rec. HUMAN TNF- $\beta$

## METABOLIC SYNDROME

**G** Rec. HUMAN GANGLIOSIDE GM2 ACTIVATOR

## NEURAL TISSUE DAMAGE MARKERS

**A** HUMAN  
Rec. RAT ACTIVIN A  
MURINE

Rec. HUMAN ACTIVIN B  
Rec. HUMAN ALPHA-DYSTROGLYCAN N-TERMINAL DOMAIN  
Rec. HUMAN AMINOACYLASE-1  
Rec. HUMAN AMPHIREGULIN

**B** Rec. HUMAN BMP-5  
Rec. HUMAN BRAIN FABP  
Rec. MURINE CARDIOTROPHIN-1

**C** Rec. HUMAN CDNF  
Rec. HUMAN CNTF  
Rec. RAT CNTF  
Rec. CANINE CYSTATIN C  
Nat. HUMAN CYSTATIN C  
Rec. HUMAN CYSTATIN C  
Rec. MOUSE CYSTATIN C  
Rec. RAT CYSTATIN C

**D** Rec. HUMAN DKK-1

**E** Rec. HUMAN EGF  
Rec. MURINE EGF  
Rec. RAT EGF  
Rec. HUMAN EGF RECEPTOR (EGFR)

**F** Rec. HUMAN FGF-ACIDIC  
Rec. MURINE FGF-ACIDIC  
Rec. RAT FGF-ACIDIC  
Rec. HUMAN FGF-BASIC  
Rec. MURINE FGF-BASIC  
Rec. RAT FGF-BASIC

**G** Rec. HUMAN GANGLIOSIDE GM2 ACTIVATOR  
Rec. HUMAN GDNF  
Rec. MURINE GDNF  
Rec. RAT GDNF  
Rec. HUMAN GMF- $\beta$   
Rec. RAT GRO/KC  
Rec. HUMAN GRO/MGSA  
Rec. HUMAN GRO- $\beta$   
Rec. RAT GRO- $\beta$ /MIP-2  
Rec. HUMAN GRO- $\gamma$   
Rec. MURINE GRO- $\gamma$

**I** Rec. HUMAN I-309  
Rec. HUMAN IFN- $\beta$   
Rec. MURINE IFN- $\gamma$   
Rec. RAT IFN- $\gamma$   
Rec. HUMAN INSL5/INSL7 HYBRID  
Rec. HUMAN INTERLEUKIN-1RA  
Rec. HUMAN INTERLEUKIN-1 $\alpha$   
Rec. MURINE INTERLEUKIN-1 $\alpha$   
Rec. RAT INTERLEUKIN-1 $\alpha$   
Rec. HUMAN INTERLEUKIN-1 $\beta$   
Rec. MURINE INTERLEUKIN-1 $\beta$   
Rec. RAT INTERLEUKIN-1 $\beta$   
Rec. HUMAN INTERLEUKIN-36RA  
Rec. HUMAN INTERLEUKIN-36 $\beta$   
Rec. HUMAN INTERLEUKIN-36 $\gamma$



# PROTEINS INDEX

<b>F</b>	Rec.	HUMAN	FETUIN A/AHSG	Rec.	HUMAN	INTERLEUKIN-36γ				
	Rec.	HUMAN	FETUIN-B	<b>J</b>	Rec.	MURINE	JE/MCP-1			
	Rec.	HUMAN	FGF-20		<b>K</b>	Rec.	HUMAN	KALLISTATIN		
	Rec.	HUMAN	FGF-8			<b>L</b>	Rec.	HUMAN	LEUKOCYTE CELL-DERIVED CHEMOTAXIN-2	
	Rec.	HUMAN	FGF-ACIDIC				Rec.	HUMAN	LIF	
	Rec.	MURINE	FGF-ACIDIC				Rec.	HUMAN	LIN28-TAT	
	Rec.	RAT	FGF-ACIDIC				Rec.		LYSOBACTER ENZYMOGENES ARG-C	
	Rec.	HUMAN	FGF-BASIC				<b>M</b>	Rec.	HUMAN	MAMMAGLOBIN A (FC CHIMERA)
	Rec.	MURINE	FGF-BASIC					Rec.	HUMAN	MASPIN
	Rec.	RAT	FGF-BASIC					Rec.	HUMAN	MCP-2
	Rec.	HUMAN	FOLLISTATIN					Rec.	MURINE	MCP-2
<b>G</b>	Rec.	HUMAN	GALECTIN-1					Rec.	HUMAN	MCP-3
	Rec.	HUMAN	GASTROKINE-1	Rec.				MURINE	MCP-3	
	Rec.	HUMAN	G-CSF	Rec.	HUMAN			MCP-3		
	Rec.	MURINE	G-CSF	Rec.	HUMAN	MCP-4				
	Rec.	HUMAN	GDF-15/MIC-1	Rec.	MURINE	MCP-5				
	Rec.	HUMAN	GLUCOSE-REGULATED PROTEIN 78	Rec.	HUMAN	M-CSF				
	Rec.	HUMAN	GP96 (HSP90B1)	Rec.	MURINE	M-CSF				
	Rec.	HUMAN	GRANULYSIN	Rec.	RAT	M-CSF				
	Rec.	HUMAN	GREMLIN-1	Rec.	HUMAN	MIA				
	<b>H</b>	Rec.	HUMAN	HEREGULINβ-1	Rec.	HUMAN	MIDKINE			
		Rec.	HUMAN	HERSTATIN, Tag-free	Rec.	MURINE	MIDKINE			
Rec.		HUMAN	HIGH MOBILITY GROUP PROTEIN B1	Rec.	HUMAN	MIF				
Rec.		HUMAN	HSP90 CO-CHAPERONE CDC37	Rec.	HUMAN	MMP-1				
<b>I</b>	Rec.	HUMAN	IFN-β	Rec.	HUMAN	MMP-2				
	Rec.	MURINE	IFN-γ	Rec.	HUMAN	MMP-3				
	Rec.	RAT	IFN-γ	Rec.		MYCOPLASMA ARGININE DEIMINASE (ADI)				
	Rec.	HUMAN	IGF-BP1	<b>N</b>	Rec.	HUMAN	NEUDESIN			
	Rec.	HUMAN	IGF-BP2		Rec.	HUMAN	NEUROSERPIN			
	Rec.	HUMAN	IGF-BP3		Rec.	HUMAN	NOV			
	Rec.	HUMAN	IGF-BP4		<b>O</b>	Rec.	HUMAN	ONCOMODULIN-1		
	Rec.	HUMAN	IGF-BP5			Rec.	HUMAN	OSTEOACTIVIN/GPNMB		
	Rec.	HUMAN	IGF-BP6			Rec.	HUMAN	OSTEOBLAST SPECIFIC FACTOR 2		
	Rec.	HUMAN	IGF-BP7			Rec.	HUMAN	OSTEOPONTIN		
	Rec.	HUMAN	INSULIN RECEPTOR			<b>P</b>	Rec.	HUMAN	p16-INK4a	
	Rec.	HUMAN	INTERLEUKIN-1α				Rec.	HUMAN	p16-INK4a-TAT	
	Rec.	MURINE	INTERLEUKIN-1α				Rec.	HUMAN	PAI-2	
	Rec.	RAT	INTERLEUKIN-1α				Rec.	HUMAN	PDGF-AA	
	Rec.	HUMAN	INTERLEUKIN-1β	Rec.			MURINE	PDGF-AA		
	Rec.	MURINE	INTERLEUKIN-1β	Rec.			HUMAN	PDGF-AB		
	Rec.	RAT	INTERLEUKIN-1β	Rec.			HUMAN	PDGF-BB		
	Rec.	HUMAN	INTERLEUKIN-3	Rec.	MURINE		PDGF-BB			
	Rec.	MURINE	INTERLEUKIN-3	Rec.	HUMAN		PDGF-CC			
	Rec.	RAT	INTERLEUKIN-3β	Rec.	HUMAN		PECAM-1			
	Rec.	HUMAN	INTERLEUKIN-7	Rec.	HUMAN		PEPTIDASE INHIBITOR 16			
	Rec.	MURINE	INTERLEUKIN-7	Rec.	HUMAN	PLGF-1				
	Rec.	RAT	INTERLEUKIN-7	Rec.	HUMAN	PLGF-2				
	Rec.	HUMAN	INTERLEUKIN-8	Nat.	HUMAN	PROLACTIN-INDUCIBLE PROTEIN				
	Rec.	HUMAN	INTERLEUKIN-12	Rec.	HUMAN	PROLINE-RICH ACIDIC PROTEIN 1				
	Rec.	MURINE	INTERLEUKIN-12	Nat.	HUMAN	PROSTATE-SPECIFIC ANTIGEN				
Rec.	HUMAN	INTERLEUKIN-12 p80	Rec.	HUMAN	PROSTATE-SPECIFIC GENE-1					
Rec.	HUMAN	INTERLEUKIN-24	Rec.	HUMAN	PROUROGUANYLIN					
Rec.	HUMAN	INTERLEUKIN-33	Rec.	HUMAN	PYRUVATE KINASE M2					
Rec.	MURINE	INTERLEUKIN-33								
Rec.	HUMAN	INTERLEUKIN-34								
Rec.	HUMAN	INTERLEUKIN-36RA								
Rec.	HUMAN	INTERLEUKIN-36β								

# PROTEINS INDEX

<b>R</b>	Rec.	HUMAN	REGENERATING PROTEIN 1 ALPHA			
	Rec.	HUMAN	REGENERATING PROTEIN 4			
	Rec.	HUMAN	REGUCALCIN			
	Rec.	HUMAN	R-SPONDIN-1			
	Rec.	HUMAN	R-SPONDIN-2			
	Rec.	HUMAN	R-SPONDIN-3			
<b>S</b>	Rec.	HUMAN	S100A2			
	Rec.	HUMAN	S100A4			
	Rec.	HUMAN	S100A5			
	Rec.	HUMAN	S100A6			
	Rec.	HUMAN	S100A7			
	Rec.	HUMAN	S100A7A			
	Rec.	HUMAN	S100A8			
	Rec.	HUMAN	S100A11			
	Rec.	HUMAN	S100A12			
	Rec.	HUMAN	S100A13			
	Rec.	HUMAN	S100G			
	Rec.	HUMAN	S100P			
	Rec.	HUMAN	SCD22			
	Rec.	HUMAN	SCD30 LIGAND			
	Rec.	HUMAN	SECRETAGOGIN			
	Rec.	RAT	SECRETAGOGIN			
	Rec.	HUMAN	SECRETOGLOBIN FAMILY 3A MEMBER 2			
	Rec.	HUMAN	SERGLYCIN			
	Rec.	HUMAN	sFRP-1			
	Rec.	HUMAN	soX40 LIGAND			
	Rec.	HUMAN	SPARC/OSTEONECTIN			
Rec.	HUMAN	STANNIocalcin 1				
Rec.	HUMAN	STANNIocalcin 2				
<b>T</b>	Rec.	HUMAN	TACI (TNFRSF13B)			
	Rec.	HUMAN	TGF-ALPHA			
	Rec.	HUMAN	TGF-BETA 1			
	Rec.	HUMAN	TGF-BETA 1			
	Rec.	HUMAN	TGF-BETA 2			
	Rec.	HUMAN	TGF-BETA 3			
	Rec.	HUMAN	TGF-β2			
	Rec.	HUMAN	THROMBOMODULIN			
	Rec.	HUMAN	THYMOSIN-β4			
	Rec.	HUMAN	TIGAR			
	Rec.	HUMAN	TIGAR-TAT			
	Rec.	MURINE	TRAIL			
	Rec.	HUMAN	TREFOIL FACTOR 1			
	Rec.	HUMAN	TREFOIL FACTOR 2			
Rec.	HUMAN	TREFOIL FACTOR 3				
Rec.	RAT	TREFOIL FACTOR 3				
<b>V</b>	Rec.	HUMAN	VAP-1			
	Rec.	HUMAN	VEGF121			
	Rec.	HUMAN	VEGF165			
	Rec.	MURINE	VEGF165			
	Rec.	RAT	VEGF165			
	Rec.	HUMAN	VEGF-B			
	Rec.	HUMAN	VEGF-D			
Rec.	HUMAN	VISININ-LIKE PROTEIN 1				
<b>W</b>	Rec.	HUMAN	WAP FOUR-DISULFIDE CORE DOMAIN PROTEIN 2			
	Rec.	HUMAN	WNT-1			
	Rec.	HUMAN	WNT1-INDUCIBLE-SIGNALING PATHWAY PROTEIN 1			
	Rec.	MURINE	WNT-3A			
<b>Z</b>	Rec.	HUMAN	ZINC-ALPHA-2-GLYCOPROTEIN			
	Rec.	HUMAN	ZYMOGEN GRANULE MEMBRANE PROTEIN 16			
<b>OTHERS</b>						
<b>A</b>	Rec.		AEROMONAS AMINOPEPTIDASE			
	Rec.	HUMAN	ANNEXIN A2			
<b>B</b>	Rec.	HUMAN	BAFF RECEPTOR			
	Rec.	HUMAN	BETACELLULIN			
	Rec.	MURINE	BETACELLULIN			
	Nat.	HUMAN	BILE SALT-ACTIVATED LIPASE			
<b>C</b>	Rec.	RAT	CARBOXYPEPTIDASE-B			
	Rec.	CANINE	CLUSTERIN			
	Rec.	HUMAN	CLUSTERIN			
	Nat.	HUMAN	CLUSTERIN			
	Rec.	RAT	CLUSTERIN			
	Rec.	HUMAN	CONNECTIVE TISSUE GROWTH FACTOR			
	Rec.	HUMAN	CORNIFIN-B			
	Rec.	HUMAN	CYCLOPHILIN F			
<b>E</b>	Rec.	HUMAN	ENTEROKINASE			
<b>F</b>	Rec.	HUMAN	FAM3A			
	Rec.	HUMAN	FAM3C			
	Rec.	HUMAN	FAM3D			
	Rec.	HUMAN	FABP 12			
	Rec.	HUMAN	FETUIN-B			
	Rec.	HUMAN	FURIN			
<b>G</b>	Rec.	HUMAN	GASTROTROPIN			
	Rec.	HUMAN	GDF-11			
	Rec.	HUMAN	GDF-5 (BMP-14/CDMP-1)			
	Rec.	MURINE	GDF-5 (BMP-14/CDMP-1)			
<b>H</b>	Rec.	HUMAN	HEAT SHOCK 10kDa PROTEIN, MITOCHONDRIAL			
	Rec.	HUMAN	HEAT SHOCK 70kDa PROTEIN 1A/1B			
	Rec.		HEPATITIS B VIRUS PROTEIN X, Tag-free			
	Rec.		HIV-1 PROTEASE			
	Rec.		HIV-2 PROTEASE			
<b>I</b>	Rec.	HUMAN	INTESTINAL FABP			
<b>K</b>	Rec.	HUMAN	KLF4-TAT			
<b>N</b>	Rec.	HUMAN	NANOG			
	Rec.	HUMAN	NANOG-TAT			
<b>P</b>	Rec.	HUMAN	PAI-1			
	Rec.	HUMAN	PARAOXONASE 1			
	Rec.	HUMAN	PIGMENT EPITHELIUM-DERIVED FACTOR			
	Rec.	HUMAN	PROGUANYLIN			
	Rec.	HUMAN	PROKINETICIN-2			
	Rec.	HUMAN	PROUROGUANYLIN			
<b>S</b>	Rec.	HUMAN	S100A1			
	Rec.	HUMAN	S100A2			

# PROTEINS INDEX

Rec. HUMAN S100A3  
 Rec. HUMAN S100A5  
 Rec. HUMAN S100A6  
 Rec. HUMAN S100A7  
 Rec. HUMAN S100A7A  
 Rec. HUMAN S100A10  
 Rec. HUMAN S100A11  
 Rec. HUMAN S100A13  
 Rec. HUMAN S100A14  
 Rec. HUMAN S100A16  
 Rec. HUMAN S100G  
 Rec. HUMAN SAP PROTEIN  
 Rec. HUMAN SCD34  
 Rec. HUMAN SCF  
 Rec. MURINE SCF  
 Rec. RAT SCF  
 Rec. HUMAN sFAS RECEPTOR  
 Rec. HUMAN SOX2  
 Rec. HUMAN SOX2-TAT  
 Rec. HUMAN sRANK RECEPTOR  
 Rec. HUMAN sTRAIL RECEPTOR-1  
 Rec. HUMAN sTRAIL RECEPTOR-2

**T** Rec. HUMAN THYROSTIMULIN ALPHA SUBUNIT  
 Rec. HUMAN THYROSTIMULIN BETA SUBUNIT  
 Rec. HUMAN TIMP-1  
 Rec. HUMAN TIMP-2  
 Rec. HUMAN TPO  
 Rec. MURINE TPO  
 Rec. RAT TPO  
 Rec. HUMAN TWEAK RECEPTOR

**Z** Rec. HUMAN ZYMOGEN GRANULE MEMBRANE PROTEIN 16

## PANCREATIC REGULATORY MOLECULES

**P** Rec. HUMAN PANCREATITIS-ASSOCIATED PROTEIN-1

**R** Rec. HUMAN REGENERATING PROTEIN 1 ALPHA  
 Rec. HUMAN REGENERATING PROTEIN 1 BETA  
 Rec. HUMAN REGENERATING PROTEIN 4

## PULMONARY DISEASES

**C** Rec. HUMAN CLUB CELL PROTEIN (CC16)

**S** Rec. HUMAN S100A8  
 Rec. HUMAN S100A9  
 Rec. HUMAN SECRETOGLOBIN FAMILY 3A MEMBER 2

**V** Rec. HUMAN VEGF-D

## RENAL DISEASE

**A** Rec. HUMAN AMINOACYLASE-1  
 Rec. HUMAN ANGIOTENSINOGEN

**C** Rec. CANINE CLUSTERIN  
 Rec. HUMAN CLUSTERIN  
 Nat. HUMAN CLUSTERIN  
 Rec. RAT CLUSTERIN  
 Rec. CANINE CYSTATIN C  
 Nat. HUMAN CYSTATIN C  
 Rec. HUMAN CYSTATIN C  
 Rec. MOUSE CYSTATIN C  
 Rec. RAT CYSTATIN C

**F** Nat. HUMAN FETUIN-A (AHSG)  
 Rec. HUMAN FIBROBLAST GROWTH FACTOR 23 C-TERMINAL PEPTIDE

**H** Rec. HUMAN HEART FABP

**K** Rec. HUMAN KIM-1  
 Rec. HUMAN KLOTHO CHO

**L** Rec. HUMAN LIPOCALIN-2/NGAL  
 Rec. HUMAN LIVER FABP  
 Rec. HUMAN LIVER FABP, Tag-free

**O** Rec. HUMAN OSTEOACTIVIN/GPNMB  
 Rec. HUMAN OSTEOPONTIN  
 Rec. HUMAN PODOCIN  
 Rec. HUMAN PROGUANYLIN  
 Rec. HUMAN PROSTAGLANDIN D SYNTHASE  
 Rec. HUMAN PROUROGUANYLIN

**R** Rec. HUMAN RENIN  
 Rec. HUMAN RENIN RECEPTOR

**S** Rec. HUMAN S100A12  
 Rec. HUMAN sRAGE

**T** Rec. HUMAN TREFOIL FACTOR 3  
 Rec. RAT TREFOIL FACTOR 3

**U** Nat. CANINE UROMODULIN  
 Nat. FELINE UROMODULIN  
 Nat. HUMAN UROMODULIN  
 Nat. PORCINE UROMODULIN

## REPRODUCTION

**A** Rec. HUMAN AMINOACYLASE-1

**C** Rec. HUMAN CORNIFIN-B  
 Rec. HUMAN CYSTEINE-RICH SECRETORY PROTEIN 1  
 Rec. HUMAN CYSTEINE-RICH SECRETORY PROTEIN 2  
 Rec. HUMAN CYSTEINE-RICH SECRETORY PROTEIN 3

**F** Rec. HUMAN FOLLISTATIN  
 Rec. HUMAN FRACTALKINE  
 Rec. RAT FRACTALKINE

**G** Rec. HUMAN GDF-15/MIC-1

**H** Rec. HUMAN HEAT SHOCK 10kDa PROTEIN, MITOCHONDRIAL

# PROTEINS INDEX

<b>L</b>	Rec.	HUMAN	LEPTIN, Tag-free
	Rec.	MOUSE	LEPTIN, Tag-free
	Rec.	RAT	LEPTIN, Tag-free
<b>O</b>	Rec.	HUMAN	OMENTIN
	Rec.	HUMAN	PLACENTAL PROTEIN 13 (GALECTIN-13)
	Nat.	HUMAN	PROLACTIN-INDUCIBLE PROTEIN
	Rec.	HUMAN	PROLINE-RICH ACIDIC PROTEIN 1
	Nat.	HUMAN	PROSTATE-SPECIFIC ANTIGEN
<b>S</b>	Rec.	HUMAN	S100P
	Rec.	HUMAN	SEX HORMONE-BINDING GLOBULIN CHO
	Rec.	HUMAN	STANNIOCALCIN 1
<b>T</b>	Rec.	HUMAN	TESTIS FABP
<b>V</b>	Rec.	HUMAN	VASPIN

## SEPSIS

<b>C</b>	Rec.	CANINE	CLUSTERIN
	Rec.	HUMAN	CLUSTERIN
	Nat.	HUMAN	CLUSTERIN
	Rec.	RAT	CLUSTERIN
	Rec.	HUMAN	CXCL8 (IL-8)
<b>I</b>	Rec.	HUMAN	INTERLEUKIN-8
<b>L</b>	Nat.	CANINE	LEUCINE-RICH ALPHA-2-GLYCOPROTEIN
	Nat.	HUMAN	LEUCINE-RICH ALPHA-2-GLYCOPROTEIN
<b>P</b>	Rec.	CANINE	PROCALCITONIN
	Rec.	HUMAN	PROCALCITONIN
	Rec.	MOUSE	PROCALCITONIN
	Rec.	PORCINE	PROCALCITONIN
	Rec.	RAT	PROCALCITONIN
	Rec.	RHESUS	PROCALCITONIN
<b>S</b>	Rec.	HUMAN	S100A8
	Rec.	HUMAN	S100A9
<b>T</b>	Rec.	HUMAN	TREFOIL FACTOR 1
	Rec.	HUMAN	TREFOIL FACTOR 2
	Rec.	HUMAN	TREFOIL FACTOR 3
	Rec.	RAT	TREFOIL FACTOR 3

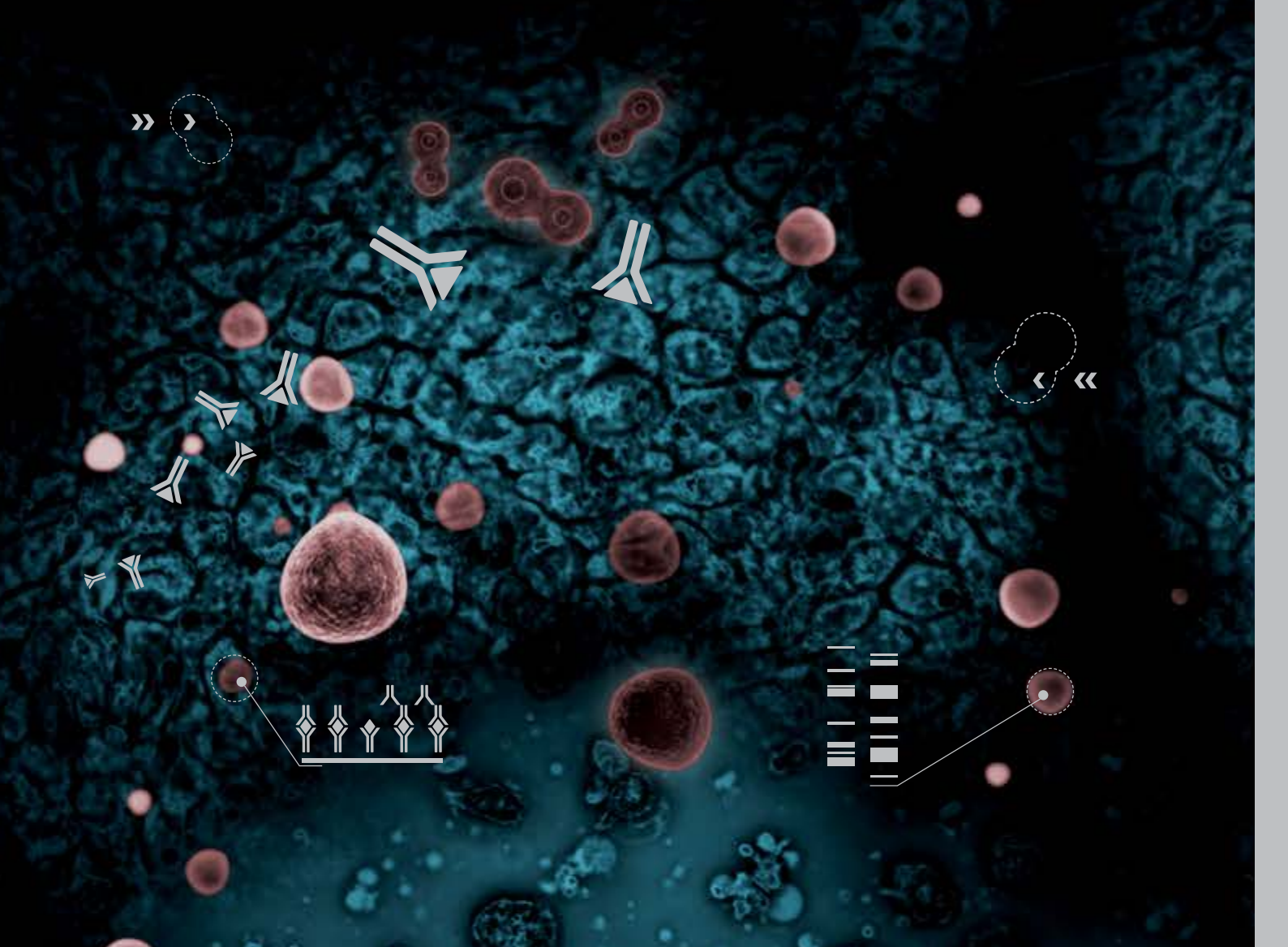
## STEROID HORMONES

<b>C</b>	Rec.	MOUSE	CORTICOSTEROID-BINDING GLOBULIN
	Rec.	HUMAN	CORTICOTROPIN-RELEASING FACTOR-BINDING PROTEIN
<b>K</b>	Rec.	HUMAN	KLOTHO CHO
<b>S</b>	Rec.	HUMAN	SEX HORMONE-BINDING GLOBULIN CHO

## TRANSPLANTATION

	Rec.	HUMAN	4-1BB LIGAND
<b>A</b>	Rec.	HUMAN	ALLOGRAFT INFLAMMATORY FACTOR 1
	Rec.	HUMAN	AMINOACYLASE-1
<b>E</b>	Rec.	HUMAN	E-SELECTIN
<b>G</b>	Rec.	HUMAN	GRANULYSIN
	Rec.	MURINE	GRANZYME B BACULOVIRUS
<b>I</b>	Rec.	MURINE	IFN- $\gamma$
	Rec.	RAT	IFN- $\gamma$
	Rec.	HUMAN	INTERLEUKIN-1 $\alpha$
	Rec.	MURINE	INTERLEUKIN-1 $\alpha$
	Rec.	RAT	INTERLEUKIN-1 $\alpha$
	Rec.	HUMAN	INTERLEUKIN-1 $\beta$
	Rec.	MURINE	INTERLEUKIN-1 $\beta$
Rec.	RAT	INTERLEUKIN-1 $\beta$	
<b>M</b>	Rec.	HUMAN	MIG
	Rec.	MURINE	MIG
	Rec.	HUMAN	MIP-1 $\alpha$
	Rec.	MURINE	MIP-1 $\alpha$
	Rec.	RAT	MIP-1 $\alpha$
<b>R</b>	Rec.	HUMAN	RANTES
	Rec.	MURINE	RANTES
	Rec.	RAT	RANTES
<b>S</b>	Rec.	HUMAN	SCD40 LIGAND
	Rec.	MURINE	SCD40 LIGAND
	Rec.	HUMAN	sIL-2R $\alpha$
	Rec.	HUMAN	sIL-4R $\alpha$
	Rec.	HUMAN	soX40 LIGAND





**BioVendor – Laboratorni medicina a.s.**

Research & Diagnostic Products Division  
Karasek 1767/1, 621 00 Brno, CZECH REPUBLIC  
Phone: +420 549 124 185, Fax: +420 549 211 460  
e-mail: info@biovendor.com

**Germany and Switzerland:**

**BioVendor GmbH**

Otto-Hahn-Straße 16, 34123 Kassel, GERMANY  
Phone: +49 6221 4339 100, Fax: +49 6221 4339 111  
e-mail: infoEU@biovendor.com

› [www.biovendor.com](http://www.biovendor.com)

**Austria:**

**BioVendor GesmbH**

Gaudenzdorfer Gürtel 43-45, 1120, Vienna, AUSTRIA  
Phone: +43 1 890 9025, Fax: +43 1 890 5163  
E-mail: infoAustria@biovendor.com

**USA, Canada and Mexico:**

**BioVendor, LLC**

128 Bingham Rd., Suite 1300 Asheville, NC 28806, USA  
Phone: +1-800-404-7807, +1-828-575-9250, Fax: +1-828-575-9251  
e-mail: infoUSA@biovendor.com

**Oxford Biosystems Ltd**

115J Olympic Avenue, Milton Park, Oxfordshire  
OX14 4SA, UNITED KINGDOM  
Phone: 01235 431390  
E-mail: sales@oxfordbiosystems.com

› [www.oxfordbiosystems.com](http://www.oxfordbiosystems.com)

