

ENERGY METABOLISM AND BODY WEIGHT REGULATION – RESEARCH AND DIAGNOSTICS



IMMUNOASSAYS

*We are proud that researchers working with BioVendor kits regularly present their results in the highest-ranking life science – examples inside.
Do you also wish to publish in top journals journals? – Come and join us!*

Most recent – up to 2014

BioVendor released new ELISA kits for the obesity research: Insulin Receptor, Pancreatic-Derived Factor (Pander), Lecithin-Cholesterol Acyltransferase (LCAT). US Patent has been issued to BioVendor on Sept. 30, 2014 for “Method for Determining the Concentration of the Adipocytic Form of the Fatty Acid Binding Protein” (EU patent granted in 2010).

When originality and quality matters:

BioVendor’s focus on keeping high quality standards combined with originality and novelty resulted in a lot of references of the use of such ELISAs as FGF-21, Adipocyte FABP, Chemerin, Vaspin, Omentin, Adiponectin, Resistin, Leptin (human, mouse, rat...).

...and history - 1998:

A long time ago in a laboratory far far away, BioVendor released the first commercial Leptin ELISA kit on the world market...

ENERGY METABOLISM AND BODY WEIGHT REGULATION - RESEARCH AND DIAGNOSTICS

► Pipeline

Human **Adipophilin** ELISA (ADRP)
Human **Apolipoprotein H** ELISA

Product Name	Sample Type	Cat. No.	Calibration Range
Adipocyte FABP Human ELISA		RD191036200R	
	Serum, Plasma	10 µl	0.5 - 25 ng/ml
Adipocyte FABP Mouse ELISA		RD291036200R	
	Serum	10 µl	0.78 - 50 ng/ml
Adiponectin Human ELISA (Competitive)		RD195023100	
	Serum, Plasma	10 µl	0.1 - 10 µg/ml
Adiponectin Human ELISA, High Sensitivity (Sandwich)		RD191023100	
	Serum, Urine, Cerebrospinal fluid, Plasma	10 µl	1 - 150 ng/ml
Adiponectin Human PENTASET		RD120023	
	Cell culture medium, ELISA, Others, Plasma, Serum	1 µl	4.69 - 150 ng/ml
Adiponectin Mouse ELISA		RD293023100R	
	Serum, Cell culture medium	10 µl	0.25 - 8 ng/ml
Adiponectin Mouse PENTASET		RD220023	
	Cell culture medium, ELISA, Others, Plasma, Serum	1 µl (Serum, Plasma)	0.25 - 8 ng/ml
Adiponectin HMW Human ELISA		RSCHHMWADN096R	
	Serum, Plasma (heparin)	10 µl	3.125 - 200 ng/ml
Adiponectin HMW Mouse/Rat ELISA		RSHAKMAN011R	
	Serum	10 µl	3.13 - 200 ng/ml
Afamin Human ELISA		RD194428100R	
	Serum, Plasma	5 µl	0.15 - 1.6 µg/ml
Angiopoietin-Like Protein 3 Human ELISA		RD191092200R	
	Serum, Plasma	30 µl	12.5 - 400 ng/ml
Angiopoietin-Like Protein 3 Mouse/Rat ELISA		RAG011R	
	Serum, Plasma, Cell culture supernatant		0.016 - 1 ng/ml
Angiopoietin-Like Protein 4 Human ELISA		RD191073200R	
	Serum, Plasma (EDTA, citrate)		0.94 - 60 ng/ml
Angiopoietin-Like Protein 6 Human ELISA		RAG001R	
	Serum, Plasma, Cell culture supernatant		1.56 - 100 ng/ml
Apo B-48 Human ELISA		RSHAKHB48R	
	Serum, Plasma (EDTA, heparin)	50 µl	2.5 - 160 ng/ml
Apolipoprotein D Human ELISA		RD193118200R	
	Serum, Urine, Cerebrospinal fluid, Plasma	20 µl	0 - 10 ng/ml
Apolipoprotein M Human ELISA		RD191129200R	
	Serum, Plasma	20 µl	0.313 - 10 ng/ml
Apoptosis Inhibitor of Macrophage Human ELISA		RD191328200R	
	Serum, Plasma (heparin)	10 µl	0.16 - 10 ng/ml
Betatrophin Human ELISA		RD191347200R	
	Plasma-Citrate, Plasma-EDTA, Plasma-Heparin, Serum	20 µl	0.31 - 20 ng/ml
Betatrophin Mouse ELISA		RD291531200R	
	Serum	5 µl	0.63 - 40 ng/ml

BioVendor's ELISA kits in Obesity Publications

Laeger T, et al. **FGF21 is an endocrine signal of protein restriction.** J Clin Invest. 2014 Sep 2;124 (9):3913-22.

Cornu M, et al. **Hepatic mTORC1 controls locomotor activity, body temperature, and lipid metabolism through FGF21.** Proc Natl Acad Sci U S A. 2014 Aug 12;111 (32):11592-9.

Mutanen A, et al. **Serum FGF21 increases with hepatic fat accumulation in pediatric onset intestinal failure.** J Hepatol. 2014 Jan;60 (1):183-90.

Bookout AL, et al. **FGF21 regulates metabolism and circadian behavior by acting on the nervous system.** Nat Med. 2013 Sep;19 (9):1147-52.

Owen BM, et al. **FGF21 contributes to neuroendocrine control of female reproduction.** Nat Med. 2013 Sep;19 (9):1153-6.

ENERGY METABOLISM AND BODY WEIGHT REGULATION - RESEARCH AND DIAGNOSTICS

Product Name	Sample Type	Cat. No.	Calibration Range
Chemerin Human ELISA		RD191136200R	
	Serum, Plasma	5 µl	0.25 - 8 ng/ml
Collagen Triple Helix Repeat-Containing Protein 1 Human ELISA		RD191394200R	
	Serum, Plasma (EDTA, citrate, heparin), Tissue extract	10 µl	78 - 2500 pg/ml
CTRP1 Human ELISA		RD191153100R	
	Serum, Plasma (citrate)	8 µl	3.13 - 100 ng/ml
CTRP5 Human ELISA		RAG003R	
	Serum, Plasma, Cell culture supernatant		0.001 - 5 µg/ml
CTRP9 Human ELISA		RD191180200R	
	Plasma, Serum	10 µl	25 - 800 pg/ml
Decorin Human ELISA		RD193324200R	
	Serum, Plasma (EDTA, citrate, heparin)	20 µl	0.125 - 4 ng/ml
DsbA-L Human ELISA		RD191357200R	
	Plasma-Citrate, Plasma-EDTA, Plasma-Heparin, Serum, Tissue	10 µl	10 - 640 pg/ml
Epidermal FABP Human ELISA		RD191060200R	
	Milk, Plasma, Serum, Tissue culture medium, Tissue extract, Urine	25 µl	0.5 - 40 ng/ml
ENPP1 Human ELISA		RD191124200R	
	Serum, Plasma (Citrate)	15 µl	0.25 - 16 ng/ml
Fetuin-B Human ELISA		RD191172200R	
	Serum, Plasma	10 µl	0.125 - 4 ng/ml
Fibroblast Growth Factor 19 Human ELISA		RD191107200R	
	Serum, Plasma	50 µl	12.5 - 800 pg/ml
Fibroblast Growth Factor 21 Human ELISA		RD191108200R	
	Serum, Plasma	75 µl	30 - 1920 pg/ml
Fibroblast Growth Factor 21 Mouse/Rat ELISA		RD291108200R	
	Serum, Plasma, Cell culture medium	7 / 50 µl	40 - 2560 pg/ml
Ganglioside GM2 Activator Human ELISA		RD191309200R	
	Plasma (EDTA, citrate, heparin), Serum, Urine	20 µl	0.16 - 5 ng/ml
Ghrelin Acylated Canine Easy Sampling ELISA		RA494062500R	
	Plasma	20 µl	2.0 - 250 pg/ml
Ghrelin Acylated Human Easy Sampling ELISA		RA194062500R	
	Plasma	50 µl	2.0 - 250 pg/ml
Ghrelin Acylated Mouse/Rat Easy Sampling ELISA		RA394062500R	
	Plasma		2.0 - 250 pg/ml
Ghrelin Acylated Human ELISA		RA194062400R	
	Plasma (EDTA+PHMB)	20 µl	1.96 - 250 pg/ml
Ghrelin Acylated Human ELISA		RA194062400-384R	
	Cell culture medium		2-250 pg/ml
Ghrelin Acylated Porcine ELISA		RA594062400R	
	Plasma	50 µl	3.9 - 500 pg/ml
Ghrelin Acylated Rat ELISA		RA394062400R	
	Plasma (EDTA+PHMB)	20 µl	1.96 - 250 pg/ml
Ghrelin Unacylated Human Easy Sampling ELISA		RA194063500R	
	Plasma	20 µl	2.0 - 250 pg/ml
Ghrelin Unacylated Human ELISA		RA194063400R	
	Plasma (EDTA)	10 µl	1.96 - 250 pg/ml

Huang CL, et al.
Serum adipocyte fatty acid-binding protein levels in patients with critical illness are associated with insulin resistance and predict mortality. Crit Care. 2013 Feb 1;17 (1):R22.

Maruyama S, et al.
Fat-derived factor omentin stimulates endothelial cell function and ischemia-induced revascularization via endothelial nitric oxide synthase-dependent mechanism. J Biol Chem. 2012 Jan 2;287 (1):408-17.

Famulla S, et al.
Pigment epithelium-derived factor (PEDF) is one of the most abundant proteins secreted by human adipocytes and induces insulin resistance and inflammatory signaling in muscle and fat cells. Int J Obes (Lond). 2011 Jun;35 (6):762-72.

Hancke K, et al.
Adipocyte fatty acid-binding protein as a novel prognostic factor in obese breast cancer patients. Breast Cancer Res Treat. 2010 Jan;119(2):367-7.

ENERGY METABOLISM AND BODY WEIGHT REGULATION - RESEARCH AND DIAGNOSTICS

Product Name	Sample Type	Cat. No.	Calibration Range
Ghrelin Unacylated Porcine ELISA	Plasma	RA594063400R	20 µl 3.9 - 500 pg/ml
Ghrelin Unacylated Rat ELISA	Plasma (EDTA)	RA394063400R	10 µl 1.96 - 250 pg/ml
Glucagon-Like Peptide-1 Human ELISA (Multispecies specificity)	Plasma	RSCYK160R	30 µl 0.206 - 50 ng/ml
Glucagon-Like Peptide-1 (Active) Mouse/Rat ELISA	Serum, Plasma	RSHAKMGP-011R	10 µl 1.56 - 50 pg/ml
Glucose-Regulated Protein 78 Human ELISA	Serum, Plasma	RD191230200R	50 µl 0.78 - 50 ng/ml
IL-1RACP / IL-1R3 Human ELISA	Serum, Plasma (EDTA, citrate, heparin)	RD191518200R	5 µl 100 - 3 200 pg/ml
Insulin Canine ELISA	Serum, Plasma	RSHAKRIN012TR	10 µl 188 - 12000 pg/ml
Insulin Hamster Standard		RSHASIN-001R	0.156 - 10 ng/ml
Insulin Human ELISA	Serum	RIS006R	50 µl 5.1 - 250 µIU/ml
Insulin Human ELISA (Multispecies specificity)	Serum	RSCYK060R	25 µl 0.137 - 100 ng/ml
Insulin Mouse ELISA, High Sensitive	Fluids, Serum, Plasma	RAI005R	10 µl 0.2 - 7 ng/ml
Insulin Rat ELISA, High Sensitive	Fluids, Serum, Plasma	RAI006R	10 µl 0.2 - 7 ng/ml
Insulin Receptor Human ELISA	Plasma, Serum	RD191041200R	0.47 - 30 ng/ml
Insulin Mouse ELISA, Ultra Sensitive	Fluids, Serum, Plasma	RAI007R	25 µl 0.025 - 1.5 ng/ml
Insulin Mouse/Rat ELISA	Serum, Plasma	RA19004R	50 µl 0.08 - 10 ng/ml
Insulin Mouse/Rat ELISA (5x96 wells)	Serum, Plasma	RA19004-480R	50 µl 0.08 - 10 ng/ml
Insulin Rat ELISA	Serum, Plasma	RTC018R	50 µl 0.156 - 10 ng/ml
Insulin Rat ELISA, Ultra Sensitive	Fluids, Serum, Plasma	RAI008R	25 µl 0.025 - 1.5 ng/ml
Insulin Mouse ELISA, Wide Range	Fluids, Serum, Plasma	RAI003R	5 µl 1 - 50 ng/ml
Insulin Rat ELISA, Wide Range	Fluids, Serum, Plasma	RAI004R	10 µl 1 - 50 ng/ml
Insulin Porcine ELISA	Serum, Plasma	RSHAKRIN013TR	10 µl 188 - 12000 pg/ml
Insulin (RTU) Mouse ELISA	Culture medium, Plasma, Serum	RSHAKRIN-011RUR	10 µl 100 - 12000 pg/ml
Insulin Receptor Human ELISA	Serum, Plasma	RD191041200R	30 µl 0.47 - 30 ng/ml

Engl J, et al. **A-FABP- a biomarker associated with the metabolic syndrome and/or an indicator of weight change?** Obesity (Silver Spring). 2008 Aug;16(8):1838-42. Epub 2008 May 29.

Tso AW, et al. **Serum adipocyte fatty acid binding protein as a new biomarker predicting the development of type 2 diabetes: a 10-year prospective study in a Chinese cohort.** Diabetes Care. 2007 Oct;30(10):2667-72. Epub 2007 Jul 9.

Xu A, et al. **Circulating adipocyte-fatty acid binding protein levels predict the development of the metabolic syndrome: a 5-year prospective study.** Circulation. 2007 Mar 27;115(12):1537-43

Hojman P, et al. **Fibroblast growth factor-21 is induced in human skeletal muscles by hyperinsulinemia.** Diabetes. 2009 Dec;58(12):2797-801. Epub 2009 Aug 31.

ENERGY METABOLISM AND BODY WEIGHT REGULATION - RESEARCH AND DIAGNOSTICS

Product Name	Sample Type	Cat. No.	Calibration Range
Insulin (S-type) Mouse ELISA		RSHAKRIN011SR	
	Serum, Plasma, Cell culture medium	5 µl	78 - 5000 pg/ml
Interleukin-6 Human ELISA		RAF070R	
	Serum, Plasma Cell culture supernatant	50 µl	1.6 - 100 pg/ml
Interleukin-6 Human ELISA, High Sensitivity		RGP013R	
	Serum, Plasma, Cell culture supernatant	100 µl	1.56 - 50 pg/ml
Interleukin-6 Monkey ELISA		RAF073R	
	Baboon serum, Cynomolgus serum	50 µl	1.9 - 120 U/ml
Interleukin-6 Mouse ELISA		RAF071R	
	Serum, Plasma (EDTA, citrate), Cell culture supernatant	50 µl	31.3 - 2000 pg/ml
Interleukin-6 Rat ELISA		RAF072R	
	Serum, Cell culture supernatant	50 µl	31 - 2000 pg/ml
Interleukin-33 Human ELISA		RAF064R	
	Cell culture supernatant, Plasma (heparin, citrate), Serum	50 µl	7.8 - 500 pg/ml
Irisin ELISA		RAG018R	
	Cell culture supernatant, Plasma, Serum		0.001 - 5 µg/ml
Kallistatin Human ELISA		RD191436200R	
	Amniotic fluid, Bronchoalveolar lavage, Cerebrospinal fluid, Milk, Plasma (EDTA, citrate, heparin), Serum, Urine	Serum, Plasma, CSF, Amniotic fluid, Breast milk: 5 µl, BALF and urine: 35 µl	0.25 - 16 ng/ml
LECT2 Human ELISA		RD191370200R	
	Plasma (EDTA, citrate, heparin), Serum	5 µl	0.13 - 8 ng/ml
Leptin Human ELISA, Clinical Range		RD191001100	
	Serum, Plasma	35 µl	1 - 50 ng/ml
Leptin Human PENTASET		RD120001	
	Cell culture medium, ELISA, Others, Plasma, Serum	35 µl	1.56 - 50 ng/ml
Leptin Mouse PENTASET		RD220001	
	Cell culture medium, ELISA, Others, Plasma, Serum	5 µl	0.13 - 4 ng/ml
Leptin Mouse/Rat ELISA		RD291001200R	
	Serum, Plasma, Cell culture medium	5 µl	100 - 4000 pg/ml
Leptin Rat PENTASET		RD320001	
	Cell culture medium, ELISA, Others, Plasma, Serum	Serum, Plasma: 5 µl	0.25 - 8 ng/ml
Leptin Receptor Human ELISA		RD194002100	
	Serum, Plasma (EDTA, heparin)	35 µl	2 - 100 ng/ml
Lipocalin 2/NGAL Human ELISA		RD191102200R	
	Serum, Plasma (EDTA), Urine, Stool	10 µl	0.3 - 10 ng/ml
Monocyte Chemotactic Protein-1 Human ELISA, Sensitive		RAF081R	
	Serum, Plasma (EDTA, heparin), Cell culture supernatant	20 µl	15.6 - 1000 pg/ml
Monocyte Chemotactic Protein-1 Mouse ELISA		RAF080R	
	Serum, Cell culture medium	50 µl	15.6 - 1000 pg/ml
Nesfatin-1 Human ELISA		RD191227200R	
	Plasma, Serum	20 µl	0.125 - 4 ng/ml
Neudesin Human ELISA		RD191276200R	
	Amniotic fluid, Cerebrospinal fluid, Plasma (EDTA, heparin), Serum	40 µl	0.06 - 4 ng/ml
Obestatin Human ELISA		RSCYK231R	
	Serum, Plasma	20 µl	0.412 - 100 ng/ml

Zhang X et al. **Serum FGF21 levels are increased in obesity and are independently associated with the metabolic syndrome in humans.** Diabetes. 2008 May;57(5):1246-53.

Annuzzi G, et al. **Type 2 diabetes mellitus is characterized by reduced postprandial adiponectin response: a possible link with diabetic postprandial dyslipidemia.** Metabolism. 2010 Apr;59(4):567-74.

von Eynatten M, et al. **Urinary adiponectin excretion: a novel marker for vascular damage in type 2 diabetes.** Diabetes. 2009 Sep;58(9):2093-9.



ENERGY METABOLISM AND BODY WEIGHT REGULATION - RESEARCH AND DIAGNOSTICS

Product Name	Sample Type	Cat. No.	Calibration Range
Obestatin Mouse/Rat ELISA	Plasma	RA19014R 25 µl	156.2 - 20000 pg/mL
Osteopontin Human ELISA	Cerebrospinal fluid, Milk, Serum, Plasma, Urine	RD191446200R Plasma: 10 µl, Serum: 20 µl, Urine, CSF, Breast milk: 5 µl	0.25 - 16 ng/ml
Omentin-1 Human ELISA	Serum, Plasma	RD191100200R 6 µl	2 - 64 ng/ml
Paraoxonase 1 Human ELISA	Plasma (citrate), Serum	RD191279200R 5 µl	1.25 - 80 ng/ml
PEDF Human ELISA	Serum, Plasma (citrate)	RD191114200R 10 µl	0.15 - 6 ng/ml
Progranulin Human ELISA	Serum, Plasma	RMEE103R 10 µl	75 - 2500 pg/ml
Progranulin Mouse ELISA	Serum, Cell culture supernatant	RAG014R	0.125 - 8 ng/ml
Progranulin Rat ELISA	Serum, Cell culture supernatant	RAG015R	0.063 - 4 ng/ml
PYY Human ELISA	Plasma	RSCYK080R 25 µl	0.14 - 100 ng/ml
PYY Rat ELISA	Plasma	RSCYK081R 25 µl	0.14 - 100 ng/ml
RBP4 Human ELISA	Serum, Urine, Plasma, Cell culture supernatant	RAG005R	0.001 - 5 µg/ml
RBP4 Human ELISA, High Sensitivity	Serum, Urine, Plasma, Cell culture supernatant	RAG021R	0.39 - 25 ng/ml
RBP4 Mouse/Rat ELISA	Serum, Urine, Cell culture supernatant	RAG007R	0.188 - 12 ng/ml
Resistin Human ELISA	Serum, Plasma	RD191016100 35 µl	1 - 50 ng/ml
Resistin Mouse ELISA	Serum, Plasma (EDTA, citrate), Cell culture medium	CS069 5 µl	2 - 100 ng/ml
Resistin Rat ELISA	Serum	RD391016200R 10 µl	0.25 - 20 ng/ml
Soluble Receptor of Advanced Glycation End-Products Human ELISA	Serum, Plasma	RD191116200R 50 µl	50 - 3200 pg/ml
Synuclein Gamma Human ELISA	Serum, Plasma, Urine	RD191397200CS 35 µl	0.2 - 10 ng/ml
TNF-alpha Human ELISA	Serum, Plasma, Urine, Cell culture supernatant	RAF128R 50 µl	7.8 - 500 pg/ml
TNF-alpha total Human ELISA	Serum, Plasma, Cell culture supernatant	RAF132R 50 µl	23 - 1500 pg/ml
TNF-alpha Monkey ELISA	Baboon serum, Cynomolgus serum, Cell culture supernatant	RAF131R 50 µl	28.1 - 1800 U/ml
TNF-alpha Mouse ELISA	Serum, Plasma, Cell culture supernatant	RAF129R 50 µl	31.3 - 2000 pg/ml
TNF-alpha Rat ELISA	Serum, Cell culture supernatant	RAF130R 50 µl	39.1 - 2500 pg/ml

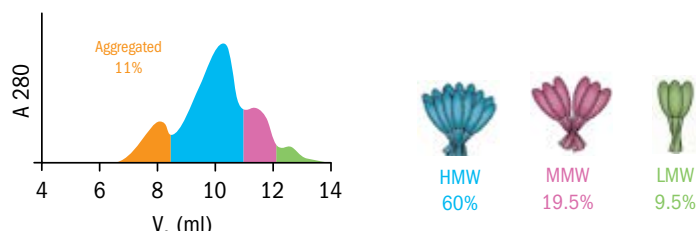
ENERGY METABOLISM AND BODY WEIGHT REGULATION - RESEARCH AND DIAGNOSTICS

Product Name	Sample Type	Cat. No.	Calibration Range
Trefoil Factor 1 Human ELISA	Serum, Plasma (EDTA, heparin)	RD191158100R	0.125 - 4 ng/ml
		40 µl	
Trefoil Factor 2 Human ELISA	Serum, Plasma	RD191159100R	0.25 - 10 ng/ml
		40 µl	
Trefoil Factor 3 Human ELISA	Serum, Plasma (EDTA, heparin)	RD191160200R	0.075 - 2.4 ng/ml
		25 µl	
Trefoil Factor 3 Rat ELISA	Serum, Urine	RD391160200R	62.5 - 4000 pg/ml
		Serum: 20 µl, Urine: 5 µl	
Vaspin Human ELISA	Serum, Plasma (EDTA, heparin)	RD191097200R	0.032 - 2 ng/ml
		80 µl	
Visfatin (NAMPT) Human ELISA	Serum	RAG004R	0.125 - 8 ng/ml
Visfatin (NAMPT) Human (IntraCellular) ELISA	Cell lysate	RAG008R	0.063 - 16 ng/ml
Visfatin (NAMPT) Mouse/Rat ELISA	Serum	RAG009R	0.5 - 32 ng/ml
Visfatin (NAMPT) Mouse/Rat (IntraCellular) ELISA	Cell lysate	RAG010R	0.5 - 32 ng/ml
Zinc-Alpha-2-Glycoprotein Human ELISA	Serum, Plasma	RD191093100R	3 - 100 ng/ml
		10 µl	

PROTEINS

► Adiponectin Oligomers

Gel filtration chromatogram of Recombinant Human Adiponectin (Flag-tag) from HEK 293 cells



Cat. No.	Description	Species	Source	Type
RD172036100	Adipocyte FABP, Tagless	Human	<i>E. coli</i>	Recombinant
RD165036050	Adipocyte FABP	Human	Adipose Tissue	Native
RD172029100	Adiponectin	Human	<i>E. coli</i>	Recombinant
RD172023100	Adiponectin	Human	HEK293	Recombinant
RD272023100	Adiponectin	Mouse	HEK293	Recombinant
RD572023100	Adiponectin	Porcine	HEK293	Recombinant
RD162023050	Adiponectin	Human	Pooled serum	Native
RD172023100-C	Adiponectin MMW and HMW oligomer-rich Human, Tagless	Human	HEK293	Recombinant
RD172112100	Adiponectin Globular	Human	<i>E. coli</i>	Recombinant
RD172112025	Adiponectin Globular	Human	<i>E. coli</i>	Recombinant
RD372023100	Adiponectin	Rat	HEK293	Recombinant

ENERGY METABOLISM AND BODY WEIGHT REGULATION - RESEARCH AND DIAGNOSTICS

Cat. No.	Description	Species	Source	Type
RD172023025-F	Adiponectin Solution	Human	HEK293	Recombinant
RD172023100-F	Adiponectin Solution	Human	HEK293	Recombinant
RD172091100	Adiponectin, Trimeric form	Human	HEK293	Recombinant
RD272091100	Adiponectin, Trimeric form	Mouse	HEK293	Recombinant
RD172161100	Adipophilin	Human	<i>E. coli</i>	Recombinant
RD172030100	Agouti-Related Protein	Human	<i>E. coli</i>	Recombinant
RD172092100	Angiopoietin-Like Protein 3	Human	<i>E. coli</i>	Recombinant
RD172092050-HEK	Angiopoietin-Like Protein 3	Human	HEK293	Recombinant
RD172073100	Angiopoietin-Like Protein 4	Human	<i>E. coli</i>	Recombinant
RD172073100-HEK	Angiopoietin-Like Protein 4	Human	HEK293	Recombinant
RD172073025	Angiopoietin-Like Protein 4	Human	<i>E. coli</i>	Recombinant
RD172306100	Angiopoietin-Like Protein 6	Human	<i>E. coli</i>	Recombinant
RD172101100	Apolipoprotein A5	Human	HEK293	Recombinant
RD172118100	Apolipoprotein D	Human	<i>E. coli</i>	Recombinant
RD172118100-HEK	Apolipoprotein D	Human	HEK293	Recombinant
RD172129100	Apolipoprotein M	Human	HEK293	Recombinant
RD172372100	Cell Death-Inducing DFFA-Like Effector C	Human	<i>E. coli</i>	Recombinant
RD172386050	CCL2 (MCP-1)	Human	<i>E. coli</i>	Recombinant
RD172394100	Collagen Triple Helix Repeat-Containing Protein 1	Human	<i>E. coli</i>	Recombinant
RD172394100-HEK	Collagen Triple Helix Repeat-Containing Protein 1	Human	HEK293	Recombinant
RD172153100	CTRP1	Human	<i>E. coli</i>	Recombinant
RD172154100	CTRP2	Human	<i>E. coli</i>	Recombinant
RD172121100	CTRP3	Human	<i>E. coli</i>	Recombinant
RD172156100	CTRP6	Human	<i>E. coli</i>	Recombinant
RD172157100	CTRP7	Human	<i>E. coli</i>	Recombinant
RD172179100	CTRP8	Human	<i>E. coli</i>	Recombinant
RD172180100	CTRP9A	Human	<i>E. coli</i>	Recombinant
RD172124100	ENPP1	Human	HEK293	Recombinant
RD172060100	Epidermal Fatty Acid Binding Protein, Tagless	Human	<i>E. coli</i>	Recombinant
RD172259100	FAM3B	Human	<i>E. coli</i>	Recombinant
RD172252100	Fatty Acid Binding Protein 12	Human	<i>E. coli</i>	Recombinant
RD272184100	Fibroblast Growth Factor 15	Mouse	<i>E. coli</i>	Recombinant
RD272184025	Fibroblast Growth Factor 15	Mouse	<i>E. coli</i>	Recombinant
RD172107100	Fibroblast Growth Factor 19	Human	<i>E. coli</i>	Recombinant

ENERGY METABOLISM AND BODY WEIGHT REGULATION - RESEARCH AND DIAGNOSTICS

Cat. No.	Description	Species	Source	Type
RD172108100	Fibroblast Growth Factor 21	Human	<i>E. coli</i>	Recombinant
RD272108100	Fibroblast Growth Factor 21	Mouse	<i>E. coli</i>	Recombinant
RD272108025-B	Fibroblast Growth Factor 21	Mouse	<i>E. coli</i>	Recombinant
RD172108100-B	Fibroblast Growth Factor 21, Tagless	Human	<i>E. coli</i>	Recombinant
RD272108100-B	Fibroblast Growth Factor 21, Tagless	Mouse	<i>E. coli</i>	Recombinant
RD172062100	Ghrelin-Acylated (Ghrelin-28)	Human		Synthetic
RD172176100	Glucagon-Like Peptide 1	Human		Synthetic
RD172243100	Glucagon-Like Peptide-1 Receptor	Human	<i>E. coli</i>	Recombinant
RD172202100	Growth Differentiation Factor-3	Human	<i>E. coli</i>	Recombinant
RD172230100	GRP-78	Human	<i>E. coli</i>	Recombinant
RD172247100	Heart Fatty Acid Binding Protein	Human	<i>E. coli</i>	Recombinant
RD172041100	Insulin Receptor	Human	HEK293	Recombinant
RD172015100	Interleukin-6	Human	<i>E. coli</i>	Recombinant
RD172203100	Interleukin-33	Human	<i>E. coli</i>	Recombinant
RD172246100	Intestinal Fatty Acid Binding Protein	Human	<i>E. coli</i>	Recombinant
RD172359100	Irisin	Human	<i>E. coli</i>	Recombinant
RD172001100	Leptin, Tagless	Human	<i>E. coli</i>	Recombinant
RD272001100	Leptin, Tagless	Mouse	<i>E. coli</i>	Recombinant
RD372001100	Leptin, Tagless	Rat	<i>E. coli</i>	Recombinant
RD172102050	Lipocalin-2/NGAL	Human	<i>E. coli</i>	Recombinant
RD172227100	Nesfatin-1	Human	<i>E. coli</i>	Recombinant
RD172276100	Neudesin	Human	<i>E. coli</i>	Recombinant
RD172100100	Omentin	Human	<i>E. coli</i>	Recombinant
RD172100025	Omentin	Human	<i>E. coli</i>	Recombinant
RD172446100	Osteopontin	Human	HEK293	Recombinant
RD172114100	Pigment Epithelium-Derived Factor	Human	<i>E. coli</i>	Recombinant
RD172114100-HEK	Pigment Epithelium-Derived Factor	Human	HEK293	Recombinant
RD172272100	Proghrelin	Human	<i>E. coli</i>	Recombinant
RD272068100	Resistin-Like Molecule-alpha	Mouse	<i>E. coli</i>	Recombinant
RD172047100	Resistin-Like Molecule-beta	Human	<i>E. coli</i>	Recombinant
RD272082100	Resistin-Like Molecule-gamma	Mouse	<i>E. coli</i>	Recombinant
RD172016300	Resistin	Human	<i>E. coli</i>	Recombinant
RD272016300	Resistin	Mouse	<i>E. coli</i>	Recombinant
RD372016300	Resistin	Rat	<i>E. coli</i>	Recombinant

ENERGY METABOLISM AND BODY WEIGHT REGULATION - RESEARCH AND DIAGNOSTICS

Cat. No.	Description	Species	Source	Type
RD172016301	Resistin, Tagless	Human	<i>E. coli</i>	Recombinant
RD172104100	Retinol Binding Protein 4	Human	<i>E. coli</i>	Recombinant
RD172116100	sRAGE	Human	<i>E. coli</i>	Recombinant
RD172116100-HEK	sRAGE	Human	HEK293	Recombinant
RD172158100	Trefoil Factor 1	Human	<i>E. coli</i>	Recombinant
RD172159100	Trefoil Factor 2	Human	<i>E. coli</i>	Recombinant
RD172159025	Trefoil Factor 2	Human	<i>E. coli</i>	Recombinant
RD172160100	Trefoil Factor 3	Human	<i>E. coli</i>	Recombinant
RD372160100	Trefoil Factor 3	Rat	<i>E. coli</i>	Recombinant
RD172097100	Vaspin	Human	<i>E. coli</i>	Recombinant
RD172098100	Visfatin	Human	<i>E. coli</i>	Recombinant
RD172093100	Zinc-Alpha-2-Glycoprotein	Human	HEK293	Recombinant
RD172093025	Zinc-Alpha-2-Glycoprotein	Human	HEK293	Recombinant
RD162093025	Zinc-Alpha-2-Glycoprotein	Human	Human serum	Native

ANTIBODIES

Cat. No.	Description	Spec. React.	Type	Antigen
RD1820711004H3	Acylation Stimulating Protein	Human	Mouse MAb, Clone 4H3	Peptide
RD181037050	Adipocyte FABP	Human	Rabbit PAb	<i>E. coli</i>
RD184037100	Adipocyte FABP	Human	Goat PAb	<i>E. coli</i>
RD1820231005E4	Adiponectin	Human	Mouse MAb, Clone 5E4	HEK293
RD1820231007C11	Adiponectin	Human	Mouse MAb, Clone 7C11	HEK293
RD181023100	Adiponectin	Human	Rabbit PAb	HEK293
RD184023100-01	Adiponectin	Human	Sheep PAb	HEK293
RD581023100	Adiponectin	Porcine	Rabbit PAb	HEK293
RD584023100	Adiponectin	Porcine	Rabbit PAb	HEK293
RD181023220	Adiponectin	Human	Rabbit PAb	<i>E. coli</i>
RD281023100	Adiponectin	Murine	Rabbit PAb	HEK293
RD184023100	Adiponectin	Human	Goat PAb	HEK293
RD181161100	Adipophilin	Human	Rabbit Pab	<i>E. coli</i>
RD184161100	Adipophilin	Human	Sheep Pab	<i>E. coli</i>
RD181030050	Agouti-Related Protein	Human	Rabbit PAb	<i>E. coli</i>

ENERGY METABOLISM AND BODY WEIGHT REGULATION - RESEARCH AND DIAGNOSTICS

Cat. No.	Description	Spec. React.	Type	Antigen
RD181092100	Angiopoietin-Like Protein 3	Human	Rabbit PAb	<i>E. coli</i>
RD184092100	Angiopoietin-Like Protein 3	Human	Sheep PAb	<i>E. coli</i>
RD181073100-01	Angiopoietin-Like Protein 4	Human	Rabbit PAb	<i>E. coli</i>
RD184073100-01	Angiopoietin-Like Protein 4	Human	Sheep PAb	<i>E. coli</i>
RD184073100-02	Angiopoietin-Like Protein 4	Human	Sheep PAb	HEK293
RD181118100	Apolipoprotein D	Human	Rabbit PAb	<i>E. coli</i>
RD184118100	Apolipoprotein D	Human	Sheep PAb	<i>E. coli</i>
RD181124100	ENPP1	Human	Rabbit PAb	HEK293
RD184124100	ENPP1	Human	Sheep PAb	HEK293
RD181060100	Epidermal Fatty Acid Binding Protein	Human	Rabbit PAb	<i>E. coli</i>
RD184060100	Epidermal Fatty Acid Binding Protein	Human	Sheep PAb	<i>E. coli</i>
RD184259100	FAM3B	Human	Sheep PAb	<i>E. coli</i>
RD181172100	Fetuin-B	Human	Rabbit PAb	HEK293
RD184172100	Fetuin-B	Human	Sheep PAb	HEK293
RD181107100	Fibroblast Growth Factor 19	Human	Rabbit PAb	<i>E. coli</i>
RD184107100	Fibroblast Growth Factor 19	Human	Sheep PAb	<i>E. coli</i>
RD181108100	Fibroblast Growth Factor 21	Human	Rabbit PAb	<i>E. coli</i>
RD184108100	Fibroblast Growth Factor 21	Human	Sheep PAb	<i>E. coli</i>
RD281108100	Fibroblast Growth Factor 21	Mouse	Rabbit PAb	<i>E. coli</i>
RD181109100-01	Fibroblast Growth Factor 23	Human	Rabbit PAb	<i>E. coli</i>
RD184230100	GRP-78	Human	Sheep PAb	<i>E. coli</i>
RD181203100	Interleukin-33	Human	Rabbit PAb	<i>E. coli</i>
RD184203100	Interleukin-33	Human	Sheep PAb	<i>E. coli</i>
RD182001210-02	Leptin	Human	Mouse MAb, Clone LEP-02	<i>E. coli</i>
RD181001220	Leptin	Human	Rabbit PAb	<i>E. coli</i>
RD281001220	Leptin	Mouse	Rabbit PAb	<i>E. coli</i>
RD381001220	Leptin	Rat	Rabbit PAb	<i>E. coli</i>
RD182002110-01	Leptin Receptor	Human	Mouse MAb, Clone LPR-01	NSO
RD182002110-02	Leptin Receptor	Human	Mouse MAb, Clone LPR-02	NSO
RD184227100	Nesfatin-1	Human	Sheep Pab	<i>E. coli</i>
RD181100100	Omentin-1	Human	Rabbit PAb	<i>E. coli</i>
RD184100100	Omentin-1	Human	Sheep PAb	<i>E. coli</i>
RD184279100	Paraoxonase 1	Human	Sheep PAb	<i>E. coli</i>

ENERGY METABOLISM AND BODY WEIGHT REGULATION - RESEARCH AND DIAGNOSTICS

Cat. No.	Description	Spec. React.	Type	Antigen
RD181114100	Pigment Epithelium-Derived Factor	Human	Rabbit PAb	<i>E. coli</i>
RD184114100	Pigment Epithelium-Derived Factor	Human	Sheep PAb	<i>E. coli</i>
RD181047100	Resistin-Like Molecule-beta	Human	Rabbit PAb	<i>E. coli</i>
RD381016100	Resistin	Rat	Rabbit PAb	<i>E. coli</i>
RD184016220	Resistin	Human	Goat PAb	<i>E. coli</i>
RD181016220	Resistin	Human	Rabbit PAb	<i>E. coli</i>
RD184116100	sRAGE	Human	Sheep PAb	<i>E. coli</i>
RD181158100	Trefoil Factor 1	Human	Rabbit PAb	<i>E. coli</i>
RD184158100	Trefoil Factor 1	Human	Sheep PAb	<i>E. coli</i>
RD181159100	Trefoil Factor 2	Human	Rabbit PAb	<i>E. coli</i>
RD184159100	Trefoil Factor 2	Human	Sheep PAb	<i>E. coli</i>
RD184160100	Trefoil Factor 3	Human	Sheep PAb	<i>E. coli</i>
RD181160100	Trefoil Factor 3	Human	Rabbit PAb	<i>E. coli</i>
RD181093100	Zinc-Alpha-2-Glycoprotein	Human	Rabbit PAb	HEK293
RD184093100	Zinc-Alpha-2-Glycoprotein	Human	Sheep PAb	HEK293

› Contact Information



BioVendor – Laboratorní medicína a.s.
 Karasek 1767/1, 621 00 Brno, Czech Republic
 Phone: +420 549 124 185, Fax: +420 549 211 460
 E-mail: info@biovendor.com

BioVendor GmbH
 Otto-Hahn-Straße 16, 34123 Kassel, Germany
 Phone: +49 6221 4339 100, Fax: +49 6221 4339 111
 E-mail: infoEU@biovendor.com

› www.biovendor.com

BioVendor GesmbH
 Gaudenzdorfer Gürtel 43-45, 1120 Vienna, Austria
 Phone: +43 1 890 9025, Fax: +43 1 890 5163
 E-mail: infoAustria@biovendor.com

BioVendor, LLC
 128 Bingham Rd., Suite 1300, Asheville, NC 28806, USA
 Phone: +1-800-404-7807, Phone: +1-828-575-9250
 Fax: +1-828-575-9251, E-mail: infoUSA@biovendor.com