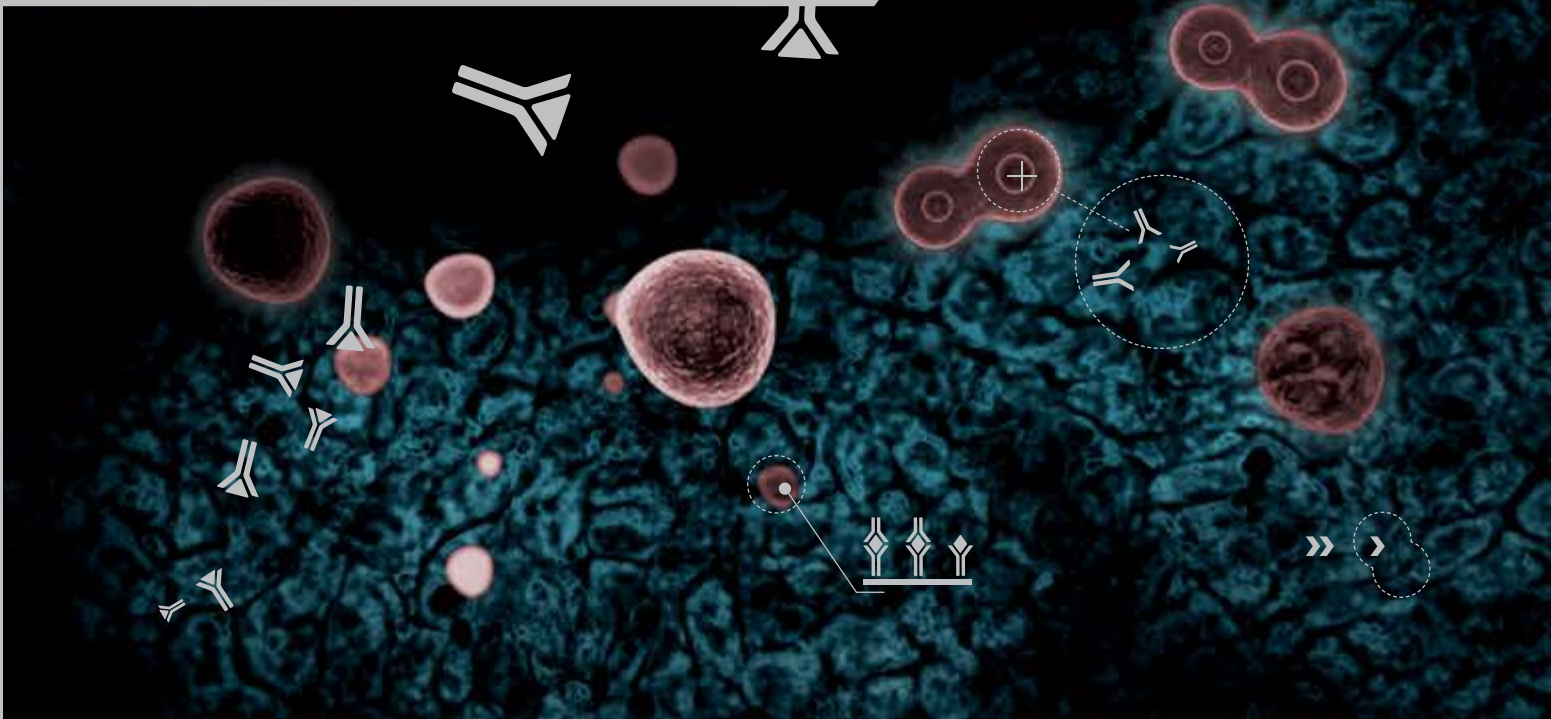


BIOVENDOR

RESEARCH AND DIAGNOSTIC PRODUCTS

IMMUNOASSAYS / ANTIBODIES / PROTEINS INDEX



IMMUNOASSAYS

IMMUNOASSAYS

		1,25(OH) ₂ VITAMIN D ELISA EXTRACTION CARTRIDGES FOR 1,25(OH) ₂ VITAMIN D TOTAL ELISA EXTRACTION KIT FOR 1,25(OH) ₂ VITAMIN D TOTAL ELISA
		5α-ANDROSTANE-3α,17β-DIOL GLUCURONIDE ELISA
		17α-HYDROXYPROGESTERONE FREE IN SALIVA ELISA
		21-HYDROXYLASE (21-OH) AUTOANTIBOD ELISA
		25-OH-VITAMIN-D ELISA 25-OH-VITAMIN-D ELISA 25-OH-VITAMIN D ELISA (IVD CE) 25-OH-VITAMIN-D ELISA
HUMAN RAT		
HUMAN		2 SCREEN ISLET CELL AUTOANTIBODY ELISA
HUMAN		8-OHdG CHECK ELISA (MULTISPECIES SPECIFICITY)
HUMAN		8-OHdG CHECK (ULTRASENSITIVE) ELISA (MULTISPECIES SPECIFICITY)
		17α-HYDROXYPROGESTERONE ELISA
HUMAN		s90K/Mac-2BP ELISA
A	HUMAN MULTISPECIES	ACETYLCHOLINE RECEPTOR AUTOANTIBODY ELISA ACSDKP ELISA
	HUMAN	ADIPOCYTE FABP ELISA (IVD CE)
	MOUSE	ADIPOCYTE FABP ELISA
	HUMAN	ADIPONECTIN ELISA (IVD CE)
	HUMAN	ADIPONECTIN ELISA, HIGH SENSITIVITY (IVD CE)
	HUMAN	ADIPONECTIN HMW ELISA
	HUMAN	ADIPONECTIN PENTASET
	MOUSE	ADIPONECTIN ELISA
	MOUSE	ADIPONECTIN PENTASET
	MOUSE/RAT	ADIPONECTIN HMW ELISA
		ADMA ELISA (IVD CE) ADMA ELISA, HIGH SENSITIVITY ADMA FAST ELISA (IVD CE)
	HUMAN	AFAMIN ELISA
	HUMAN	AGGRECAN (PG) ELISA
	BOVINE	ALBUMIN ELISA
	MOUSE	ALBUMIN ELISA
	RAT	ALBUMIN ELISA
	RAT	ALBUMIN, HIGH SENSITIVITY ELISA
	MOUSE	ALBUMIN URINARY (S-TYPE) ASSAY
	RAT	ALBUMIN URINARY (S-TYPE) ASSAY
		ALDOSTERONE ELISA
	HUMAN	ALLOGRAFT INFLAMMATORY FACTOR 1 ELISA
	RAT	ALPHA-1-ACID GLYCOPROTEIN ELISA
	HUMAN	ALPHA-1-ANTITRYPSIN IN STOOL ELISA (IVD CE) ALPHA-AMYLASE SALIVA ELISA
	HUMAN	ALPHA-FETOPROTEIN ELISA
	HUMAN	ALS ELISA
	HUMAN	AMINOACYLASE-1 ELISA
		ANDROSTENEDIONE ELISA ANDROSTENEDIONE FREE IN SALIVA ELISA

	HUMAN	ANGIOPAIETIN-LIKE PROTEIN 3 ELISA
	MOUSE/RAT	ANGIOPAIETIN-LIKE PROTEIN 3 ELISA
	HUMAN	ANGIOPAIETIN-LIKE PROTEIN 4 ELISA
	HUMAN	ANGIOPAIETIN-LIKE PROTEIN 6 ELISA
	HUMAN/RAT	ANGIOTENSIN II ELISA
	HUMAN/ RAT/BOVINE/ HORSE	ANGIOTENSIN A ELISA, HIGH SENSITIVITY
	HUMAN	ANGIOTENSINOGEN ELISA
	HUMAN	ANNEXIN A1 ELISA
	HUMAN	ANNEXIN V ELISA
	HUMAN	ANTI-ALPHA-GALACTOSYL IgA ELISA
	HUMAN	ANTI-ALPHA-GALACTOSYL IgE ELISA
	HUMAN	ANTI-ALPHA-GALACTOSYL IgG ELISA
	HUMAN	ANTI-ALPHA-GALACTOSYL IgM ELISA
	HUMAN	ANTI-ANNEXIN V ELISA
	MOUSE	ANTI-dsDNA ELISA
	HUMAN	ANTI-IFN-ALPHA ELISA
	HUMAN	ANTI-IgA IgG ELISA (IVD CE)
	RAT	ANTI-KLH IgG ELISA
	RAT	ANTI-KLH IgM ELISA
	MOUSE	ANTI-OVA-IgE ELISA
	MOUSE	ANTI-OVA-IgG1 ELISA
	MOUSE	ANTI-ssDNA ELISA
	HUMAN/ MOUSE	ANTHRAX EDEMA FACTOR ASSAY KIT
	HUMAN	sAPO-1/FAS ELISA
	HUMAN	APOLIPOPROTEIN B-48 ELISA
	RABBIT	APOLIPOPROTEIN B-48 ELISA
	HUMAN	APOLIPOPROTEIN D ELISA
	HUMAN	APOLIPOPROTEIN M ELISA
	HUMAN	APOPTOSIS INHIBITOR OF MACROPHAGE ELISA
	HUMAN	APRIL ELISA
	HUMAN	AQUAPORIN-4 AUTOANTIBODY ELISA
	HUMAN	ARGINASE LIVER TYPE ELISA
	RAT	ATRIOPEPTIN ELISA
	HUMAN	AZUROCIDIN/HBP ELISA
B	HUMAN	B-ATRIAL NATRIURETIC FACTOR (1-28) (Dimer, Antiparallel) ELISA, HIGH SENSITIVITY
	HUMAN	Bcl-2 ELISA
	HUMAN	beta2-MICROGLOBULIN ELISA
	RAT	beta2-MICROGLOBULIN ELISA
	HUMAN	BETA-CHORIONIC GONADOTROPIN (BETA-HCG), FREE ELISA
	HUMAN	BETATROPHIN ELISA
	MOUSE	BETATROPHIN ELISA
	RAT	BNP-3 ELISA, HIGH SENSITIVITY
C	HUMAN	C-PEPTIDE ELISA, HIGH SENSITIVITY
	HUMAN/RAT/ PORCINE	C-TYPE NATRIURETIC PEPTIDE (32-53)
	HUMAN	CALCITONIN (CT) ELISA, HIGH SENSITIVITY
	HUMAN	CARTILAGE OLIGOMERIC MATRIX PROTEIN ELISA (IVD CE)
	MOUSE	CASPASE-1 ELISA
	HUMAN	CASPASE-8/FLICE ELISA
	HUMAN	CASPASE-9 ELISA
	HUMAN	CATHEPSIN L ELISA
	HUMAN	sCD14 ELISA
	HUMAN	sCD21 ELISA
	HUMAN	sCD23 ELISA

IMMUNOASSAYS

HUMAN	sCD26 ELISA		
HUMAN	sCD28 ELISA		
HUMAN	sCD30 ELISA		
HUMAN	sCD40 ELISA		
HUMAN	sCD40L ELISA		
MOUSE	sCD40L ELISA		
HUMAN	sCD44STD ELISA		
HUMAN	sCD44VAR (V5) ELISA		
HUMAN	sCD44VAR (V6) ELISA		
HUMAN	sCD134 (OX40) ELISA		
HUMAN	sCD137/4-1BB ELISA		
HUMAN	sCD152/CTLA-4 ELISA		
HUMAN	CHROMOGRANIN A ELISA		
	CRGP AFFINITY SORBENT		
HUMAN	CGRP EIA KIT		
RAT	CGRP EIA KIT		
HUMAN	CHEMERIN ELISA		
HUMAN	CHITINASE 3-LIKE1 ELISA		
HUMAN	CHORIONIC GONADOTROPIN (HCG) ELISA		
HUMAN	CHROMOGRANIN A ELISA		
RAT	CINC-1 ELISA		
HUMAN	CLUB CELL PROTEIN (CC16) ELISA (IVD CE)		
CANINE	CLUSTERIN ELISA		
HUMAN	CLUSTERIN ELISA		
RAT	CLUSTERIN ELISA		
	COLLAGEN TRIPLE HELIX REPEAT-CONTAINING		
HUMAN	PROTEIN 1 ELISA		
HUMAN	CORTICOSTEROID-BINDING GLOBULIN ELISA		
HUMAN	CORTICOSTERONE ELISA (MULTISPECIES SPECIFICITY)		
MOUSE/RAT	CORTICOSTERONE ELISA		
MOUSE/RAT	CORTICOTROPIN RELEASING FACTOR ELISA, SENSITIVE, EXTRACTION-FREE		
	CORTISOL ELISA		
HUMAN	CORTISOL (SALIVA) ELISA		
HUMAN	C-PEPTIDE ELISA		
MOUSE	C-PEPTIDE (U-TYPE) ELISA		
RAT	C-PEPTIDE (U-TYPE) ELISA		
CANINE	C-REACTIVE PROTEIN ELISA, HIGH SENSITIVITY		
HUMAN	C-REACTIVE PROTEIN ELISA (IVD CE)		
HUMAN	C-REACTIVE PROTEIN ELISA, HIGH SENSITIVITY (IVD CE)		
MOUSE	C-REACTIVE PROTEIN ELISA, HIGH SENSITIVITY		
RAT	C-REACTIVE PROTEIN ELISA, HIGH SENSITIVITY		
HUMAN	CTRP1 ELISA		
HUMAN	CTRP5 ELISA		
HUMAN	CTRP9 ELISA		
HUMAN	CYCLOPHILIN 40 ELISA		
HUMAN	CYCLOPHILIN A ELISA		
HUMAN	CYCLOPHILIN B ELISA		
HUMAN	CYSTATIN B ELISA		
CANINE	CYSTATIN C ELISA		
HUMAN	CYSTATIN C ELISA (IVD CE)		
HUMAN	CYSTATIN C PENTASET		
MOUSE	CYSTATIN C ELISA		
MOUSE	CYSTATIN C PENTASET		
RAT	CYSTATIN C ELISA		
RAT	CYSTATIN C PENTASET		
HUMAN	CYSTEINE-RICH SECRETORY PROTEIN 1 ELISA		
HUMAN	CYSTEINE-RICH SECRETORY PROTEIN 3 ELISA		
	CYSTICERCOSIS AG ELISA		
HUMAN	CYTOCHROME c ELISA		
		D	
		RAT	D-MARKER PEPTIDE ELISA
		HUMAN	DECORIN ELISA
			DEHYDROEPIANDROSTERONE ELISA
			DEHYDROEPIANDROSTERONE SULFATE ELISA
			DEHYDROEPIANDROSTERONE ELISA
			DHN-MA ELISA
		HUMAN	DICKKOPF-RELATED PROTEIN 1 ELISA
		HUMAN	DIHYDROTESTOSTERONE ELISA
			DsbA-L ELISA
		E	
		HUMAN	ENPP1 ELISA
		MOUSE	EOTAXIN ELISA
		HUMAN	EPIDERMAL FABP ELISA
		HUMAN	EPIDIDYMIS PROTEIN 4 (HE4) ELISA
		HUMAN	ERYTHROPOIETIN ELISA
		HUMAN	ERYTHROPOIETIN ELISA (IVD CE)
			ESTRADIOL ELISA
			ESTRADIOL FREE IN SALIVA ELISA
		RAT	ESTRADIOL ELISA
			ESTRIOL FREE IN SALIVA ELISA
		HUMAN	ESTRIOL, FREE ELISA
			ESTRONE ELISA
			ESTRONE FREE IN SALIVA ELISA
		F	
		HUMAN	sFAS LIGAND ELISA
		HUMAN	FERRITIN ELISA
		RAT	FERRITIN ELISA
		HUMAN	FETUIN-A (AHSG) ELISA (IVD CE)
		HUMAN	FETUIN-B ELISA
		HUMAN	FIBROBLAST GROWTH FACTOR-19 ELISA
		HUMAN	FIBROBLAST GROWTH FACTOR-21 ELISA
		MOUSE/RAT	FIBROBLAST GROWTH FACTOR-21 ELISA
		HUMAN	FIBRONECTIN ELISA
		HUMAN	FOLLISTATIN ELISA
		HUMAN	FSH ELISA
		G	
		HUMAN	GAD AUTOANTIBODY ELISA
		HUMAN	GALECTIN-1 ELISA
		HUMAN	GALECTIN-3 ELISA
		HUMAN	GANGLIOSIDE GM2 ACTIVATOR ELISA
		HUMAN	GASTROKINE-1 ELISA
		HUMAN	GDF-15/MIC-1 ELISA (IVD CE)
		CANINE	GHRELIN ACYLATED EASY SAMPLING ELISA
		HUMAN	GHRELIN ACYLATED ELISA
		PORCINE	GHRELIN ACYLATED ELISA
		RAT	GHRELIN ACYLATED ELISA
		HUMAN	GHRELIN EASY SAMPLING ELISA
		MOUSE/RAT	GHRELIN EASY SAMPLING ELISA
		HUMAN	GHRELIN UNACYLATED ELISA
		PORCINE	GHRELIN UNACYLATED ELISA
		RAT	GHRELIN UNACYLATED ELISA
		HUMAN	GHRELIN UNACYLATED EASY SAMPLING ELISA
		HUMAN	GLIAL FIBRILLARY ACIDIC PROTEIN ELISA
			GLICENTIN ELISA
		HUMAN	GLUCAGON ELISA (MULTISPECIES SPECIFICITY)
		HUMAN	GLUCAGON-LIKE PEPTIDE-1 ELISA (MULTISPECIES SPECIFICITY)
		MOUSE/RAT	GLUCAGON-LIKE PEPTIDE-1 (ACTIVE) ELISA
		HUMAN	GLUCAGON-LIKE PEPTIDE-2 ELISA
		MOUSE	GLUCAGON-LIKE PEPTIDE-2 ELISA

IMMUNOASSAYS

RAT GLUCAGON-LIKE PEPTIDE-2 ELISA
 HUMAN GLUCOSE-REGULATED PROTEIN 78 ELISA
 HUMAN GLUTATHIONE PEROXIDASE 1 ELISA
 HUMAN GM-CSF ELISA
 MOUSE GM-CSF ELISA
 RAT GM-CSF ELISA
 HUMAN GM-CSF RECEPTOR α CHAIN (CD116) ELISA
 HUMAN GRANULYSIN ELISA
 HUMAN GRANZYME B ELISA
 HUMAN GROWTH HORMONE ELISA
 HUMAN **GROWTH HORMONE SENSITIVE ELISA (IVD CE)**
 RAT GROWTH HORMONE ELISA
 RAT GROWTH HORMONE (GH) ELISA
 HUMAN GRP-78 ELISA

H HUMAN HAPTOGLOBIN ELISA
 HUMAN HEART FABP (FABP3) ELISA
 RAT HEMOGLOBIN ELISA
 HUMAN sHER-2 ELISA
 MULTISPECIES HISTAMINE ELISA
 sHLA-G ELISA
 HOMOARGININE ELISA
 HOST CELL PROTEIN-HCP (E.COLI) ELISA

I HUMAN IA-2 AUTOANTIBODY ELISA
 HUMAN sICAM-1 ELISA
 MONKEY sICAM-1 ELISA
 HUMAN sICAM-2 ELISA
 HUMAN sICAM-3 ELISA
 HUMAN IFN-ALPHA ELISA
 PORCINE IFN-GAMMA 1 ELISA
 HUMAN IFN-GAMMA ELISA
 HUMAN IFN-GAMMA ELISA, HIGH SENSITIVITY
 MOUSE IFN-GAMMA ELISA
 PIG IFN-GAMMA ELISA
 HUMAN IFN-OMEGA ELISA
 HUMAN IGF-1 ELISA (IVD CE)
 HUMAN IGF-2 ELISA (IVD CE)
 HUMAN IGFBP-1 ELISA (IVD CE)
 HUMAN IGFBP-1 ELISA
 RAT IFN-GAMMA ELISA
 HUMAN IGFBP-2 ELISA
 MOUSE/RAT IGFBP-2 ELISA
 HUMAN IGFBP-3 FUNCTIONAL LIA
 HUMAN **IGFBP-3 TOTAL ELISA (IVD CE)**
 MOUSE/RAT IGFBP-3 ELISA
 HUMAN IL-1RACP / IL-1R3 ELISA
 HUMAN **IMMUNOGLOBULIN A (SECRETORY)
 IN STOOL ELISA (IVD CE)**
 MOUSE IMMUNOGLOBULIN E ELISA
 RAT IMMUNOGLOBULIN E ELISA
 HUMAN IMMUNOGLOBULIN FREE LIGHT CHAINS ELISA
 CANINE INSULIN ELISA
 HUMAN INSULIN ELISA
 MOUSE/RAT INSULIN ELISA
 RAT INSULIN ELISA
 RAT INSULIN CONTROL SET
 HUMAN INSULIN ELISA (MULTISPECIES SPECIFICITY)
 MOUSE INSULIN ELISA, HIGH SENSITIVITY
 HUMAN INSULIN RECEPTOR ELISA
 MOUSE INSULIN (RTU) ELISA

MOUSE INSULIN (S-TYPE) ELISA
 MOUSE INSULIN ELISA, ULTRA SENSITIVE
 MOUSE INSULIN ELISA, WIDE RANGE
 PORCINE INSULIN ELISA
 RAT INSULIN ELISA, HIGH SENSITIVITY
 RAT INSULIN ELISA, ULTRA SENSITIVE
 RAT INSULIN ELISA, WIDE RANGE
 HUMAN INTERLEUKIN-1 ALPHA ELISA
 MOUSE INTERLEUKIN-1 ALPHA ELISA
 RAT INTERLEUKIN-1 ALPHA ELISA
 HUMAN INTERLEUKIN-1RA ELISA
 HUMAN INTERLEUKIN-1 BETA ELISA
 MONKEY INTERLEUKIN-1 BETA ELISA
 MOUSE INTERLEUKIN-1 BETA ELISA
 RAT INTERLEUKIN-1 BETA ELISA
 HUMAN INTERLEUKIN-2 ELISA
 HUMAN INTERLEUKIN-2 ELISA, HIGH SENSITIVITY
 MONKEY INTERLEUKIN-2 ELISA
 MOUSE INTERLEUKIN-2 ELISA
 RAT INTERLEUKIN-2 ELISA
 HUMAN sINTERLEUKIN-2 RECEPTOR ELISA
 HUMAN INTERLEUKIN-4 ELISA
 HUMAN INTERLEUKIN-4 ELISA, HIGH SENSITIVITY
 MOUSE INTERLEUKIN-4 ELISA
 RAT INTERLEUKIN-4 ELISA
 HUMAN INTERLEUKIN-4 RECEPTOR (CD124) ELISA
 HUMAN INTERLEUKIN-5 ELISA
 MOUSE INTERLEUKIN-5 ELISA
 HUMAN INTERLEUKIN-6 ELISA
 HUMAN INTERLEUKIN-6 ELISA, HIGH SENSITIVITY
 MONKEY INTERLEUKIN-6 ELISA
 MOUSE INTERLEUKIN-6 ELISA
 PORCINE INTERLEUKIN-6 ELISA
 RAT INTERLEUKIN-6 ELISA
 HUMAN INTERLEUKIN-6 BETA (CD130) ELISA
 HUMAN sINTERLEUKIN-6 RECEPTOR ELISA
 HUMAN INTERLEUKIN-7 ELISA
 HUMAN INTERLEUKIN-8 ELISA
 MONKEY INTERLEUKIN-8 ELISA
 HUMAN INTERLEUKIN-9 ELISA
 HUMAN INTERLEUKIN-10 ELISA
 HUMAN INTERLEUKIN-10 ELISA, HIGH SENSITIVITY
 MONKEY INTERLEUKIN-10 ELISA
 MOUSE INTERLEUKIN-10 ELISA
 PORCINE INTERLEUKIN-10 ELISA
 RAT INTERLEUKIN-10 ELISA
 HUMAN INTERLEUKIN-12 (p70) ELISA
 HUMAN INTERLEUKIN-12 ELISA, HIGH SENSITIVITY
 MONKEY INTERLEUKIN-12 (p70) ELISA
 MOUSE INTERLEUKIN-12 (p70) ELISA
 MOUSE INTERLEUKIN-12 TOTAL (p40 + p70) ELISA
 HUMAN INTERLEUKIN-12/INTERLEUKIN-23 p40 ELISA
 HUMAN INTERLEUKIN-13 ELISA
 MOUSE INTERLEUKIN-13 ELISA
 HUMAN INTERLEUKIN-13 RECEPTOR SUBUNIT ALPHA-2 ELISA
 HUMAN INTERLEUKIN-15 ELISA
 MOUSE INTERLEUKIN-15/INTERLEUKIN-15 RECEPTOR ELISA
 HUMAN INTERLEUKIN-17A ELISA
 RAT INTERLEUKIN-17A ELISA
 MOUSE INTERLEUKIN-17 ELISA
 HUMAN INTERLEUKIN-17AF ELISA

IMMUNOASSAYS

	HUMAN	INTERLEUKIN-17F ELISA		MOUSE/RAT	OBESTATIN ELISA	
	MOUSE	INTERLEUKIN-17F ELISA		MOUSE/RAT/ PORCINE/ CANINE	OCTREOTIDE	
	HUMAN	INTERLEUKIN-18 ELISA		HUMAN	OMENTIN-1 ELISA	
	MOUSE	INTERLEUKIN-18 ELISA		HUMAN	OSTEOCALCIN (OST) ELISA	
	PIG	INTERLEUKIN-18 ELISA		HUMAN	OSTEOPONTIN ELISA	
	HUMAN	INTERLEUKIN-21 ELISA		HUMAN	OSTEOPROTEGERIN ELISA (IVD CE)	
	HUMAN	INTERLEUKIN-22 ELISA				
	MOUSE	INTERLEUKIN-22 ELISA				
	HUMAN	INTERLEUKIN-23 ELISA		P	HUMAN	p53 ELISA
	MOUSE	INTERLEUKIN-23 ELISA		HUMAN	PAI-1 ELISA	
	HUMAN	INTERLEUKIN-27 ELISA		HUMAN	PARAOXONASE 1 ELISA	
	HUMAN	INTERLEUKIN-29 ELISA		HUMAN	PARATHYROID HORMONE (PTH) ELISA	
	HUMAN	INTERLEUKIN-31 ELISA		HUMAN	PCSK9 ELISA	
	HUMAN	INTERLEUKIN-33 ELISA		HUMAN	sPECAM-1 ELISA	
	HUMAN	INTESTINAL FABP (FABP2) ELISA		MONKEY	sPECAM-1 ELISA	
	HUMAN	IP-10 ELISA		HUMAN	PEDF ELISA	
	MOUSE	IP-10 ELISA		HUMAN	PENTRAXIN 3 ELISA	
		IRISIN ELISA		HUMAN	PEPSINOGEN I ELISA	
				HUMAN	PEPSINOGEN II ELISA	
				MOUSE/RAT/ PORCINE/ CANINE	PEPTIDE YY ELISA, HIGH SENSITIVITY	
				HUMAN	PEPTIDE YY ELISA, HIGH SENSITIVITY	
				HUMAN	PERFORIN ELISA	
				HUMAN	PERIOSTIN ELISA	
				MOUSE	PERIOSTIN ELISA	
				HUMAN	PEROXIREDOXIN 1 ELISA	
				HUMAN	PEROXIREDOXIN 3 ELISA	
				HUMAN	PHOSPHORYLATED NEUROFILAMENT H ELISA	
				HUMAN	PLACENTAL LACTOGEN ELISA	
				HUMAN	PLACENTAL PROTEIN 13 ELISA	
				HUMAN	PMN ELASTASE ELISA (IVD CE)	
				HUMAN	PREF-1 ELISA	
					PREGNENOLONE ELISA	
				CANINE	PROCALCITONIN ELISA	
				HUMAN	PROCALCITONIN ELISA (IVD CE)	
					PROGESTERONE ELISA	
					PROGESTERONE FREE IN SALIVA ELISA	
				MOUSE/RAT	PROGESTERONE ELISA	
				HUMAN	PROGRANULIN ELISA	
				MOUSE	PROGRANULIN ELISA	
				RAT	PROGRANULIN ELISA	
				HUMAN	PROINSULIN INTACT ELISA (IVD CE)	
				CANINE	PROLACTIN ELISA	
				HUMAN	PROLACTIN ELISA	
				HUMAN	PROLACTIN-INDUCIBLE PROTEIN ELISA	
				MOUSE	PROLACTIN ELISA	
				RAT	PROLACTIN ELISA	
				HUMAN	PROLACTIN-INDUCIBLE PROTEIN ELISA	
				RAT	PROLACTIN-RELEASING PEPTIDE (1-31)ELISA, HIGH SENSITIVITY	
				HUMAN	PROLINE-RICH ACIDIC PROTEIN 1 ELISA	
				HUMAN	PRORENIN ELISA	
				HUMAN	TOTAL PRORENIN/RENIN ELISA	
				HUMAN	PROSTAGLANDIN D SYNTHASE (LIPOCALIN-TYPE) ELISA	
				HUMAN	PROSTATE SECRETORY PROTEIN 94 ELISA	
				HUMAN	PROTEINASE 3 (PR3) ELISA	
				MOUSE	PROTEINASE 3 (PR3) ELISA	
				HUMAN	PROUROGUANYLIN ELISA	
				HUMAN	sPSGL-1 ELISA	
				HUMAN	PYRUVATE KINASE M2 ELISA	
K	HUMAN	KIM-1 ELISA				
	RAT	KIM-1 ELISA				
	HUMAN	KL-6 ELISA				
L	HUMAN	LACTOFERRIN ELISA				
	HUMAN	LECITHIN-CHOLESTEROL ACYLTRANSFERASE ELISA				
	HUMAN	LECT2 ELISA				
	HUMAN	LEPTIN ELISA (IVD CE)				
	HUMAN	LEPTIN PENTASET				
	HUMAN	LEPTIN RECEPTOR ELISA				
	MOUSE/RAT	LEPTIN ELISA				
	MOUSE	LEPTIN PENTASET				
	RAT	LEPTIN PENTASET				
	HUMAN	LH ELISA				
	RAT	LH ELISA (S-TYPE) ELISA, HIGH SENSITIVITY				
	HUMAN	LIF ELISA				
	HUMAN	LIPOCALIN-2/NGAL ELISA				
M	HUMAN	MACROPHAGE MIGRATION INHIBITORY FACTOR ELISA				
	HUMAN	MATRIX METALLOPROTEINASE-7 (MMP-7) ELISA				
	HUMAN	MATRIX METALLOPROTEINASE-8 ELISA				
	HUMAN	MATRIX METALLOPROTEINASE-9 ELISA				
	HUMAN	MICA ELISA				
	HUMAN	MIDKINE ELISA				
	HUMAN	MONOCYTE CHEMOTACTIC PROTEIN-1 ELISA				
	MOUSE	MONOCYTE CHEMOTACTIC PROTEIN-1 ELISA				
	HUMAN	MPO ELISA				
	HUMAN	MxA PROTEIN ELISA				
N	HUMAN	NESFATIN-1 ELISA				
	HUMAN	NEUDESIN ELISA				
	HUMAN	NEURON SPECIFIC ENOLASE ELISA				
	HUMAN/ PORCINE/ CANINE	NEURONOSTATIN-13 ELISA, HIGH SENSITIVITY				
	HUMAN	NEUROSERPIN ELISA				
	RAT	NEUROTENSIN ELISA, HIGH SENSITIVITY				
	HUMAN/RAT	NO SYNTHASE I ELISA				
O	HUMAN	OBESTATIN ELISA				

IMMUNOASSAYS

Q	RAT	QUALITY CONTROL SET	CANINE	THYROID STIMULATING HORMONE ELISA	
			CANINE	THYROID STIMULATING HORMONE CONTROL SET	
R	HUMAN	sRAGE ELISA	HUMAN	THYROID STIMULATING HORMONE ELISA	
	HUMAN	sRANKL (TOTAL) ELISA (OSTEOPROTEGERIN LIGAND)	RAT	THYROID STIMULATING HORMONE ELISA	
	HUMAN	RBP4 ELISA	HUMAN	THYROXINE, FREE (FT4) ELISA	
	HUMAN	RBP4 ELISA, HIGH SENSITIVITY	HUMAN	THYROXINE, TOTAL (T4) ELISA	
	MOUSE/RAT	RBP4 ELISA	HUMAN	TIE-2 ELISA	
	HUMAN	ACTIVE RENIN ELISA	HUMAN	TIMP-1 ELISA	
	HUMAN	RENIN ELISA		TM-CYFRA 21-1 ELISA	
	HUMAN	RESISTIN ELISA (IVD CE)	HUMAN	TNF-ALPHA ELISA	
	RAT	RESISTIN ELISA	HUMAN	TNF-ALPHA ELISA, HIGH SENSITIVITY	
	MOUSE	IgG RHEUMATOID FACTOR ELISA	HUMAN	TNF-ALPHA TOTAL ELISA	
	MOUSE	IgM RHEUMATOID FACTOR ELISA	MONKEY	TNF-ALPHA ELISA	
			MOUSE	TNF-ALPHA ELISA	
S	HUMAN	S100A6 ELISA (MULTISPECIES SPECIFICITY)	PORCINE	TNF-ALPHA ELISA	
	HUMAN	S100A8 ELISA	RAT	TNF-ALPHA ELISA	
	HUMAN	S100A8/A9 ELISA	HUMAN	TNF-BETA ELISA	
	HUMAN	S100A12	HUMAN	sTNF-R (60 kDA) ELISA	
	HUMAN	S100B ELISA	HUMAN	sTNF-R (80kDA) ELISA	
	HUMAN	S100P ELISA	MONKEY	sTNF-R I ELISA	
		S-ADENOSYL HOMOCYSTEIN (SAH) ELISA	HUMAN	t-PA ELISA	
	HUMAN	S-ADENOSYL HOMOCYSTEIN (SAH) ELISA	HUMAN	TRAIL ELISA	
		S-ADENOSYL METHIONINE (SAM) ELISA	HUMAN	TRAIL RECEPTOR 1 (CD261) ELISA	
	HUMAN	S-ADENOSYL METHIONINE (SAM) ELISA	HUMAN	TRAIL RECEPTOR 2 (CD262) ELISA	
	HUMAN	SEX HORMONE BINDING GLOBULIN ELISA	HUMAN	TRAIL RECEPTOR 3 (CD263) ELISA	
	HUMAN	SDMA ELISA (IVD CE)	HUMAN	TRAIL RECEPTOR 4 (CD264) ELISA	
	HUMAN	sE-SELECTIN ELISA		TRAINING ELISA KIT	
	MONKEY	sE-SELECTIN ELISA		MINI TRAINING ELISA KIT	
	HUMAN	sL-SELECTIN ELISA	RAT	TRANSFERRIN ELISA	
	HUMAN	sP-SELECTIN ELISA	HUMAN	TRAP 5 ASSAY	
	MONKEY	P-SELECTIN ELISA	HUMAN	TREFOIL FACTOR 1 ELISA	
	HUMAN	SECRETAGOGIN ELISA	HUMAN	TREFOIL FACTOR 2 ELISA	
	HUMAN	SECRETOGLOBIN 3A2 ELISA	HUMAN	TREFOIL FACTOR 3 ELISA	
		SECRETORY IgA ELISA	RAT	TREFOIL FACTOR 3 ELISA	
	HUMAN	SERGLYCIN ELISA	HUMAN	TRIIODOTHYRONINE, FREE (FT3) ELISA	
	HUMAN	SPERM-ANTIBODY ELISA	HUMAN	TRIIODOTHYRONINE, TOTAL (T3) ELISA	
	HUMAN	STANNIOCALCIN 1 ELISA		REVERSE T3 (RT3) ELISA	
	HUMAN	STEM CELL FACTOR RECEPTOR (CD117) ELISA	HUMAN	TROPONIN I ELISA	
	HUMAN	SURFACTANT PROTEIN A ELISA	HUMAN	TSH RECEPTOR AUTOANTIBODY ELISA 2. GENERATION	
	HUMAN	SURFACTANT PROTEIN D ELISA (IVD CE)			
	HUMAN	suPAR ELISA	U	HUMAN	URINARY TRYPSIN INHIBITOR ELISA
	HUMAN	Cu/Zn SUPEROXIDE DISMUTASE ELISA	MOUSE	UROCORTIN 2 ELISA	
	HUMAN	SUPEROXIDE DISMUTASE 1 ELISA	MOUSE/RAT	UROCORTIN 3 ELISA	
	HUMAN	SUPEROXIDE DISMUTASE 2 ELISA	CANINE	UROMODULIN ELISA	
	HUMAN	SUPEROXIDE DISMUTASE 3 ELISA	HUMAN	UROMODULIN ELISA (IVD CE)	
	HUMAN	SYNDECAN-1 (CD138) ELISA			
	MOUSE	SYNDECAN-1 (CD138) ELISA	V	HUMAN	sVAP-1 ELISA
	HUMAN	SYNUCLEIN GAMMA ELISA	HUMAN	VASPIN ELISA	
			HUMAN	sVCAM-1 ELISA	
Z		TESTOSTERONE ELISA	HUMAN	sVE-CADHERIN ELISA	
		TESTOSTERONE FREE IN SALIVA ELISA	MONKEY	sVE-CADHERIN ELISA	
	MOUSE/RAT	TESTOSTERONE ELISA	HUMAN	VEGF-A ELISA	
	HUMAN	sTfR ELISA (IVD CE)	MOUSE	VEGF-A ELISA	
	HUMAN	TGF-BETA1 ELISA	HUMAN	VEGF-C ELISA	
	MOUSE	TGF-BETA1 ELISA	RAT	VEGF-C ELISA	
	RAT	TGF-BETA1 ELISA	HUMAN	sVEGF-R1 ELISA	
	HUMAN	TGF-BETA2 ELISA	HUMAN	VEGF-R1/FLT-1 ELISA	
	HUMAN	THIOREDOXIN 1 ELISA	HUMAN	VEGF-R2/KDR ELISA	
	HUMAN	THIOREDOXIN REDUCTASE 1 ELISA	HUMAN	VEGF-R3/FLT-4 ELISA	
	HUMAN	THROMBOMODULIN (CD141) ELISA	HUMAN	VILIP-1 ELISA	

HUMAN VISFATIN (NAMPT) (INTRACELLULAR) ELISA
 MOUSE/RAT VISFATIN (NAMPT) (INTRACELLULAR) ELISA
 HUMAN VISFATIN (NAMPT) ELISA
 MOUSE/RAT VISFATIN (NAMPT) ELISA

Z HUMAN ZINC-ALPHA-2-GLYCOPROTEIN ELISA
 HUMAN ZINC TRANSPORTER 8 AUTOANTIBODY ELISA

HUMAN CYSTATIN C (E.COLI), SHEEP PAB
 CANINE CYSTATIN C, RABBIT PAB
 HUMAN CYSTATIN C, RABBIT PAB
 MOUSE CYSTATIN C, RABBIT PAB
 CANINE CYSTATIN C, SHEEP PAB
 HUMAN CYSTATIN C, SHEEP PAB
 MOUSE CYSTATIN C, SHEEP PAB
 RAT CYSTATIN C, SHEEP PAB
 HUMAN CYSTEINE-RICH SECRETORY PROTEIN 1, RABBIT PAB
 HUMAN CYSTEINE-RICH SECRETORY PROTEIN 1, SHEEP PAB

ANTIBODIES

A HUMAN ACYLATION STIMULATING PROTEIN, MOUSE MAB, CLONE: 4H3
 HUMAN ADIPOCYTE FABP, GOAT PAB
 HUMAN ADIPOCYTE FABP, RABBIT PAB
 HUMAN ADIPONECTIN (HEK), GOAT PAB
 HUMAN ADIPONECTIN (HEK), RABBIT PAB
 MURINE ADIPONECTIN (HEK), RABBIT PAB
 PORCINE ADIPONECTIN (HEK), RABBIT PAB
 HUMAN ADIPONECTIN (HEK), SHEEP PAB
 PORCINE ADIPONECTIN (HEK), SHEEP PAB
 HUMAN ADIPONECTIN, MOUSE MAB, CLONE: 5E4
 HUMAN ADIPONECTIN, MOUSE MAB, CLONE: 7C11
 HUMAN ADIPONECTIN, RABBIT PAB
 HUMAN ADIPOPILIN, RABBIT PAB
 HUMAN ADIPOPILIN, SHEEP PAB
 HUMAN AGOUTI-RELATED PROTEIN (AGRP), RABBIT PAB
 HUMAN ALLOGRAFT INFLAMMATORY FACTOR 1, SHEEP PAB
 HUMAN ANGIOPOIETIN-LIKE PROTEIN 3, RABBIT PAB
 HUMAN ANGIOPOIETIN-LIKE PROTEIN 3, SHEEP PAB
 HUMAN ANGIOPOIETIN-LIKE PROTEIN 4 (HEK), SHEEP PAB
 HUMAN ANGIOPOIETIN-LIKE PROTEIN 4, RABBIT PAB
 HUMAN ANGIOPOIETIN-LIKE PROTEIN 4, SHEEP PAB
 HUMAN ANGIOSTATIN, RABBIT PAB
 HUMAN ANNEXIN A1, RABBIT PAB
 HUMAN ANNEXIN A1, SHEEP PAB
 HUMAN APOLIPOPROTEIN D, RABBIT PAB
 HUMAN APOLIPOPROTEIN D, SHEEP PAB
 HUMAN APOPTOSIS INHIBITOR OF MACROPHAGE, SHEEP PAB
 HUMAN ARGINASE-I (LIVER TYPE), MOUSE MAB, CLONE: 6G3

B HUMAN BETA-MICROSEMINOPROTEIN, RABBIT PAB
 HUMAN BETA-MICROSEMINOPROTEIN, SHEEP PAB

C HUMAN CARDIOTROPHIN-1, MOUSE MAB, CLONE: 1F3
 HUMAN CARDIOTROPHIN-1, MOUSE MAB, CLONE: 3G6D9
 HUMAN CARDIOTROPHIN-1, RABBIT PAB
 HUMAN CATHEPSIN K, MOUSE MAB, CLONE: 3F9
 HUMAN CLUB CELL PROTEIN (CC16), RABBIT PAB
 HUMAN CLUSTERIN, MOUSE MAB, CLONE: HS-3
 CANINE CLUSTERIN, RABBIT PAB
 RAT CLUSTERIN, RABBIT PAB
 CANINE CLUSTERIN, SHEEP PAB
 HUMAN COMP, MOUSE MAB, CLONE: 12C4
 HUMAN COMP, MOUSE MAB, CLONE: 16F12
 HUMAN COMP, MOUSE MAB, CLONE: 17C10
 HUMAN CRFBP, SHEEP PAB
 HUMAN CXCL12, RABBIT PAB
 HUMAN CXCL12, SHEEP PAB
 HUMAN CYSTATIN C (E.COLI), RABBIT PAB

E HUMAN ENDOSTATIN, RABBIT PAB
 HUMAN ENPP1 (HEK), RABBIT PAB
 HUMAN ENPP1 (HEK), SHEEP PAB
 HUMAN EP-CAM (MK-1), MOUSE MAB, CLONE: MK-1-25
 HUMAN EP-CAM (MK-1), MOUSE MAB, CLONE: MK-1-410
 HUMAN EPIDERMAL FABP, RABBIT PAB
 HUMAN EPIDERMAL FABP, SHEEP PAB

F HUMAN FAM3B, SHEEP PAB
 HUMAN FETUIN-A (AHSG), GOAT PAB
 HUMAN FETUIN-A (AHSG), RABBIT PAB
 HUMAN FETUIN-B (HEK), RABBIT PAB
 HUMAN FETUIN-B (HEK), SHEEP PAB
 HUMAN FIBROBLAST GROWTH FACTOR 19, RABBIT PAB
 HUMAN FIBROBLAST GROWTH FACTOR 19, SHEEP PAB
 HUMAN FIBROBLAST GROWTH FACTOR 21, RABBIT PAB
 MOUSE FIBROBLAST GROWTH FACTOR 21, RABBIT PAB
 HUMAN FIBROBLAST GROWTH FACTOR 21, SHEEP PAB
 HUMAN FIBROBLAST GROWTH FACTOR 23, RABBIT PAB
 HUMAN FOLLISTATIN, SHEEP PAB

G HUMAN GLUCOSE-REGULATED PROTEIN 78, SHEEP PAB

H HUMAN HEPATITIS B PROTEIN X (HBX) VIRUS, RABBIT PAB
 HUMAN HERSTATIN, MOUSE MAB, CLONE: 10C7
 HUMAN HERSTATIN, MOUSE MAB, CLONE: 2D4
 HUMAN HERSTATIN, MOUSE MAB, CLONE: 2E9
 HUMAN HERSTATIN, MOUSE MAB, CLONE: 7H3
 HUMAN HERSTATIN, RABBIT PAB

I HUMAN INTERLEUKIN-33, RABBIT PAB
 HUMAN INTERLEUKIN-33, SHEEP PAB

L HUMAN LEPTIN RECEPTOR, MOUSE MAB, CLONE: LPR-01
 HUMAN LEPTIN RECEPTOR, MOUSE MAB, CLONE: LPR-02
 HUMAN LEPTIN, MOUSE MAB, CLONE: LEP-02
 HUMAN LEPTIN, RABBIT PAB
 MOUSE LEPTIN, RABBIT PAB
 RAT LEPTIN, RABBIT PAB
 HUMAN LEUCINE-RICH ALPHA-2-GLYCOPROTEIN, RABBIT PAB
 HUMAN LEUCINE-RICH ALPHA-2-GLYCOPROTEIN, SHEEP PAB

M HUMAN MIDKINE, RABBIT PAB
 HUMAN MYOSIN (CARDIAC) LIGHT CHAIN, RABBIT PAB

N HUMAN NESFATIN-1, SHEEP PAB
 HUMAN NEUROGLOBIN, CHICKEN PAB
 HUMAN NEUROGLOBIN, MOUSE MAB, CLONE: 13C8

ANTIBODIES / PROTEINS

O	HUMAN	OMENTIN-1, RABBIT PAB	T	HUMAN	STFR, MOUSE MAB, CLONE: TFR-01		
	HUMAN	OMENTIN-1, SHEEP PAB		HUMAN	THYROSTIMULIN BETA SUBUNIT, RABBIT PAB		
	HUMAN	OSTEOACTIVIN/GPNMB (HEK), RABBIT PAB		HUMAN	THYROSTIMULIN BETA SUBUNIT, SHEEP PAB		
	HUMAN	OSTEOACTIVIN/GPNMB (HEK), SHEEP PAB		HUMAN	TRAP 5, MOUSE MAB, CLONE: TRAP-01		
	HUMAN	OSTEOBLAST SPECIFIC FACTOR 1, RABBIT PAB		HUMAN	TREFOIL FACTOR 1, RABBIT PAB		
	HUMAN	OSTEOBLAST SPECIFIC FACTOR 1, SHEEP PAB		HUMAN	TREFOIL FACTOR 1, SHEEP PAB		
	HUMAN	OSTEOBLAST SPECIFIC FACTOR 2, RABBIT PAB		HUMAN	TREFOIL FACTOR 2, RABBIT PAB		
	HUMAN	OSTEOBLAST SPECIFIC FACTOR 2, SHEEP PAB		HUMAN	TREFOIL FACTOR 2, SHEEP PAB		
	HUMAN	OSTEOCRIN, RABBIT PAB		HUMAN	TREFOIL FACTOR 3, RABBIT PAB		
	HUMAN	OSTEOPROTEGERIN, MOUSE MAB, CLONE: OPG-01		HUMAN	TREFOIL FACTOR 3, SHEEP PAB		
	HUMAN	OSTEOPROTEGERIN, MOUSE MAB, CLONE: OPG-13		U	HUMAN	URINARY TRYPSIN INHIBITOR, RABBIT PAB	
	P	HUMAN			PARAOXONASE 1, SHEEP PAB	HUMAN	UROMODULIN, RABBIT PAB
		HUMAN			PIGMENT EPITHELIUM-DERIVED FACTOR, RABBIT PAB	HUMAN	UROMODULIN, SHEEP PAB
HUMAN		PIGMENT EPITHELIUM-DERIVED FACTOR, SHEEP PAB	V	HUMAN	VISININ-LIKE PROTEIN 1, RABBIT PAB		
HUMAN		PLACENTAL PROTEIN 13, RABBIT PAB		HUMAN	VISININ-LIKE PROTEIN 1, SHEEP PAB		
HUMAN		PLACENTAL PROTEIN 13, SHEEP PAB		Z	HUMAN	ZINC-ALPHA-2-GLYCOPROTEIN, RABBIT PAB	
HUMAN		PROCATHEPSIN K, MOUSE MAB, CLONE: 4B9	HUMAN		ZINC-ALPHA-2-GLYCOPROTEIN, SHEEP PAB		
HUMAN		PROCATHEPSIN K, RABBIT PAB	HUMAN		ZYMOGEN GRANULE MEMBRANE PROTEIN 16, RABBIT PAB		
HUMAN		PROLACTIN-INDUCIBLE PROTEIN, RABBIT PAB	HUMAN	ZYMOGEN GRANULE MEMBRANE PROTEIN 16, SHEEP PAB			
HUMAN		PROLACTIN-INDUCIBLE PROTEIN, SHEEP PAB	PROTEINS				
HUMAN		PROSTAGLANDIN-D SYNTHASE (LIPOCALIN-TYPE), RABBIT PAB					
HUMAN		PROSTAGLANDIN-D SYNTHASE (LIPOCALIN-TYPE), SHEEP PAB	Rec.	HUMAN	4-1BB LIGAND		
HUMAN		PROSTATE-SPECIFIC GENE-1, RABBIT PAB	Rec.	HUMAN	4-1BB RECEPTOR		
R		HUMAN	REGENERATING ISLET-DERIVED PROTEIN 3 (REG3A/PAP1),RABBIT Pab	Rec.	HUMAN	6-PHOSPHOGLUCONATE DEHYDROGENASE, DECARBOXYLATING	
	HUMAN	REGENERATING PROTEIN 1 ALPHA, RABBIT Pab	A	Rec.	HUMAN	ACTIVIN A	
	HUMAN	RESISTIN, GOAT PAB		Rec.	RAT	ACTIVIN B	
	HUMAN	RESISTIN, RABBIT PAB		Nat.	HUMAN	ADIPOCYTE FABP	
	RAT	RESISTIN, RABBIT PAB		Rec.	HUMAN	ADIPOCYTE FABP, Tag-free	
	HUMAN	RESISTIN-LIKE MOLECULE-BETA, RABBIT PAB		Nat.	HUMAN	ADIPONECTIN	
S	HUMAN	S100A6, RABBIT PAB		Rec.	HUMAN	ADIPONECTIN	
	HUMAN	S100A6, SHEEP PAB	Rec.	HUMAN	ADIPONECTIN (HMW-rich), Tag-free		
	HUMAN	S100A8, SHEEP PAB	Rec.	HUMAN	ADIPONECTIN (Trimeric form)		
	HUMAN	S100A9, SHEEP PAB	Rec.	MOUSE	ADIPONECTIN		
	HUMAN	S100A10, SHEEP PAB	Rec.	MOUSE	ADIPONECTIN (Trimeric form)		
	HUMAN	S100A11, SHEEP PAB	Rec.	PORCINE	ADIPONECTIN		
	HUMAN	S100A12, RABBIT PAB	Rec.	RAT	ADIPONECTIN		
	HUMAN	S100A12, SHEEP PAB	Rec.	HUMAN	ADIPONECTIN, (GLOBULAR)		
	HUMAN	S100A13, SHEEP PAB	Rec.	MURINE	ADIPONECTIN		
	HUMAN	S100A16, RABBIT PAB	Rec.	HUMAN	ADIPONECTIN SOLUTION		
	HUMAN	S100A16, SHEEP PAB	Rec.	HUMAN	ADIPOPHILIN		
	HUMAN	S100G, SHEEP PAB	Rec.	HUMAN	AEROMONAS AMINOPEPTIDASE		
	HUMAN	S100P, RABBIT PAB	Rec.	HUMAN	AGOUTI-RELATED PROTEIN		
	HUMAN	S100P, SHEEP Pab	Rec.	HUMAN	AITRL		
	HUMAN	SECRETAGOGIN, RABBIT PAB	Rec.	HUMAN	ALLOGRAFT INFLAMMATORY FACTOR 1		
	RAT	SECRETAGOGIN, RABBIT PAB	Nat.	HUMAN	ALPHA-1-ACID GLYCOPROTEIN		
	HUMAN	SECRETAGOGIN, SHEEP PAB	Rec.	HUMAN	ALPHA-DYSTROGLYCAN N-TERMINAL DOMAIN		
	HUMAN	sPLA2-IB, RABBIT Pab	Rec.	HUMAN	AMINOACYLASE-1		
	HUMAN	sPLA2-IIA, RABBIT Pab	Rec.	HUMAN	AMPHIREGULIN		
	HUMAN	sPLA2-IID, RABBIT Pab	Rec.	HUMAN	ANG-1		
	HUMAN	sPLA2-IIIE, RABBIT Pab	Rec.	HUMAN	ANG-2		
	HUMAN	SPLA2-X, RABBIT PAB	Rec.	HUMAN	ANGIOPOIETIN-LIKE PROTEIN 2		
	HUMAN	sPLA2-XII, RABBIT PAB					
	HUMAN	sRAGE, SHEEP Pab					
	HUMAN	SRANK (SOLUBLE RANK RECEPTOR), RABBIT PAB					
	HUMAN	STANNIocalcin 1, RABBIT Pab					

PROTEINS

Rec.	HUMAN	ANGIOPOIETIN-LIKE PROTEIN 3	Rec.	HUMAN	CCL27 (CTACK)
Rec.	HUMAN	ANGIOPOIETIN-LIKE PROTEIN 4	Rec.	HUMAN	CCL28 (MEC)
Rec.	HUMAN	ANGIOPOIETIN-LIKE PROTEIN 6	Rec.	HUMAN	CD5 ANTIGEN-LIKE
Rec.	HUMAN	ANGIOTENSINOGEN	Rec.	HUMAN	sCD14
Rec.	HUMAN	ANNEXIN A1	Rec.	HUMAN	sCD22
Rec.	HUMAN	ANNEXIN A2	Rec.	HUMAN	sCD23
Rec.	HUMAN	APOA-I	Rec.	HUMAN	sCD27 LIGAND
Rec.	HUMAN	APOE2	Rec.	HUMAN	sCD30 LIGAND
Rec.	HUMAN	APOE3	Rec.	HUMAN	sCD34
Rec.	HUMAN	APOE4	Rec.	HUMAN	sCD40 LIGAND
Rec.	HUMAN	APOLIPOPROTEIN A5	Rec.	HUMAN	sCD40 LIGAND
Rec.	HUMAN	APOLIPOPROTEIN D	Rec.	MURINE	sCD40 LIGAND
Rec.	HUMAN	APOLIPOPROTEIN M	Rec.	HUMAN	sCD100
Rec.	HUMAN	APO-SAA1	Rec.	HUMAN	CDNF
Rec.	MURINE	APRIL	Rec.	HUMAN	CELL DEATH-INDUCING DFFA-LIKE EFFECTOR C
Rec.	HUMAN	APRIL	Rec.	HUMAN	CHEMERIN
Rec.	HUMAN	ARGONAUTE-2	Rec.	HUMAN	CHITINASE-3-LIKE PROTEIN 2
Rec.	HUMAN	ARGONAUTE-2 N-TERMINAL REGION	Rec.	HUMAN	CLAUDIN-4
Rec.	HUMAN	ARTEMIN	Rec.	HUMAN	CLUB CELL PROTEIN (CC16)
Rec.	HUMAN	ATPASE INHIBITOR MITOCHONDRIAL	Rec.	CANINE	CLUSTERIN
			Rec.	HUMAN	CLUSTERIN
			Nat.	HUMAN	CLUSTERIN
B	Rec.	HUMAN	Rec.	RAT	CLUSTERIN
	Rec.	MURINE	Rec.	HUMAN	CNTF
	Rec.	HUMAN	Rec.	RAT	CNTF
	Rec.	HUMAN	Rec.	HUMAN	COLLECTRIN
	Rec.	HUMAN	Rec.	HUMAN	CONNECTIVE TISSUE GROWTH FACTOR
	Rec.	MURINE	Rec.	HUMAN	CORNIFIN-B
	Rec.	HUMAN	Rec.	MOUSE	CORTICOSTEROID-BINDING GLOBULIN
	Rec.	HUMAN			CORTICOTROPIN-RELEASING FACTOR-BINDING PROTEIN
	Rec.	HUMAN	Rec.	HUMAN	CTACK
	Rec.	MURINE	Rec.	MURINE	CTACK
	Rec.	HUMAN	Rec.	HUMAN	CTGF
	Rec.	HUMAN	Rec.	HUMAN	CTGFL/WISP-2
	Rec.	MOUSE	Rec.	HUMAN	CTHRP 1
	Rec.	RAT	Rec.	HUMAN	CTRP1
	Nat.	HUMAN	Rec.	HUMAN	CTRP2
	Rec.	HUMAN	Rec.	HUMAN	CTRP3
	Rec.	HUMAN	Rec.	HUMAN	CTRP4
	Rec.	HUMAN	Rec.	HUMAN	CTRP6
	Rec.	HUMAN	Rec.	HUMAN	CTRP7
	Rec.	HUMAN	Rec.	HUMAN	CTRP8
	Rec.	HUMAN	Rec.	HUMAN	CTRP9A
	Rec.	HUMAN	Rec.	HUMAN	CUB AND ZONA PELLUCIDA-LIKE DOMAIN-CONTAINING PROTEIN 1
	Rec.	HUMAN	Rec.	HUMAN	CXCL12 (SDF-1 α)
	Rec.	HUMAN	Rec.	HUMAN	CXCL12 (SDF-1 α) (Biotinylated)
	Rec.	HUMAN	Rec.	HUMAN	CXCL12 (SDF-1 α)
	Rec.	HUMAN	Rec.	HUMAN	CXCL16
C	Rec.	MURINE	Rec.	MURINE	CXCL16
	Rec.	HUMAN	Rec.	HUMAN	CXCL8 (IL-8)
	Rec.	HUMAN	Rec.	HUMAN	CYCLOPHILIN A
	Rec.	HUMAN	Rec.	HUMAN	CYCLOPHILIN A
	Rec.	RAT	Rec.	MOUSE	CYCLOPHILIN A
	Rec.	RAT	Rec.	RAT	CYCLOPHILIN A
	Rec.	HUMAN	Rec.	HUMAN	CYCLOPHILIN A
	Rec.	HUMAN	Rec.	HUMAN	CYCLOPHILIN B
	Rec.	HUMAN	Rec.	HUMAN	CYCLOPHILIN C
	Rec.	HUMAN	Rec.	HUMAN	CYCLOPHILIN C
	Rec.	HUMAN	Rec.	HUMAN	CYCLOPHILIN E
	Rec.	HUMAN	Rec.	HUMAN	CYCLOPHILIN E
	Rec.	HUMAN	Rec.	HUMAN	CYCLOPHILIN F
	Rec.	HUMAN	Rec.	HUMAN	CYCLOPHILIN F
	Rec.	HUMAN	Rec.	HUMAN	CYCLOPHILIN H
	Rec.	HUMAN	Rec.	HUMAN	CYCLOPHILIN H
	Rec.	HUMAN	Rec.	HUMAN	CYCLOPHILIN-40
	Rec.	HUMAN	Rec.	HUMAN	CYR61
	Rec.	HUMAN	Rec.	HUMAN	CYR61

PROTEINS

	Rec.	CANINE	CYSTATIN C		Rec.	HUMAN	FGF-16
	Nat.	HUMAN	CYSTATIN C		Rec.	HUMAN	FGF-17
	Rec.	HUMAN	CYSTATIN C		Rec.	HUMAN	FGF-18
	Rec.	MOUSE	CYSTATIN C		Rec.	HUMAN	FGF-20
	Rec.	RAT	CYSTATIN C		Rec.	HUMAN	FGF-ACIDIC
	Rec.	HUMAN	CYSTEINE-RICH SECRETORY PROTEIN 1		Rec.	MURINE	FGF-ACIDIC
	Rec.	HUMAN	CYSTEINE-RICH SECRETORY PROTEIN 2		Rec.	RAT	FGF-ACIDIC
	Rec.	HUMAN	CYSTEINE-RICH SECRETORY PROTEIN 3		Rec.	HUMAN	FGF-BASIC
	Rec.	HUMAN	CYTOKINE-LIKE PROTEIN 1		Rec.	MURINE	FGF-BASIC
					Rec.	RAT	FGF-BASIC
D	Rec.	HUMAN	DECORIN		Rec.	HUMAN	FIBRINOGEN-LIKE PROTEIN 1
	Rec.	HUMAN	DIPEPTIDYL PEPTIDASE IV (DPIV)		Rec.	MOUSE	FGF-15
	Rec.	HUMAN	DKK-1		Rec.	HUMAN	FGF-19
					Rec.	HUMAN	FGF-2 STABLE
E	Rec.	HUMAN	EGF		Rec.	HUMAN	FGF-21
	Rec.	MURINE	EGF		Rec.	HUMAN	FGF-21, Tag-free
	Rec.	RAT	EGF		Rec.	MOUSE	FGF-21
	Rec.	HUMAN	EGF RECEPTOR (EGFR)		Rec.	MOUSE	FGF-21, Tag-free
	Rec.	HUMAN	EG-VEGF		Rec.	HUMAN	FGF-23 C-TERMINAL PEPTIDE
	Rec.	HUMAN	ENA-78		Rec.	HUMAN	Flt3-LIGAND
	Rec.	HUMAN	ENA-78 (5-78 a.a.)		Rec.	MURINE	Flt3-LIGAND
	Rec.	HUMAN	ENDOSTATIN		Rec.	HUMAN	FOLLISTATIN
	Rec.	HUMAN	ENDOTHELIAL CELL-SPECIFIC MOLECULE 1		Rec.	HUMAN	FOLLISTATIN-RELATED PROTEIN 1
	Rec.	HUMAN	ENDOTHELIAL LIPASE		Rec.	HUMAN	FRACTALKINE
	Rec.	HUMAN	ENPP1		Rec.	RAT	FRACTALKINE
	Rec.	HUMAN	ENTEROKINASE		Rec.	HUMAN	FURIN
	Rec.	HUMAN	EOTAXIN				
	Rec.	MURINE	EOTAXIN	G	Rec.	MURINE	GACRP30
	Rec.	HUMAN	EOTAXIN-2		Rec.	HUMAN	gAcrp30/ADIPOLEAN
	Rec.	MURINE	EOTAXIN-2		Rec.	HUMAN	gAcrp30/ADIPOLEAN VARIANT
	Rec.	HUMAN	EOTAXIN-3		Rec.	HUMAN	GALECTIN-1
	Rec.	HUMAN	EPHRIN TYPE-A RECEPTOR 2		Rec.	HUMAN	GALECTIN-3
	Rec.	HUMAN	EPHRIN-A1		Rec.	HUMAN	GALECTIN-9
	Rec.	HUMAN	EPIDERMAL FABP, Tag-free		Rec.	HUMAN	GANGLIOSIDE GM2 ACTIVATOR
	Rec.	HUMAN	EPIGEN		Rec.	HUMAN	GASP-1
	Rec.	HUMAN	EPIREGULIN		Rec.	HUMAN	GASTROKINE-1
	Rec.	HUMAN	E-SELECTIN		Rec.	HUMAN	GASTROKINE-2
	Rec.	HUMAN	EXODUS-2		Rec.	HUMAN	GASTROKINE-3
	Rec.	MURINE	EXODUS-2		Rec.	HUMAN	GASTROTROPIN
					Rec.	HUMAN	GCP-2
F	Rec.	HUMAN	FABP 12		Rec.	HUMAN	G-CSF
	Rec.	HUMAN	FAM19A5		Rec.	MURINE	G-CSF
	Rec.	HUMAN	FAM3A		Rec.	HUMAN	GDF-11
	Rec.	HUMAN	FAM3B		Rec.	HUMAN	GDF-15/MIC-1
	Rec.	HUMAN	FAM3C		Rec.	HUMAN	GDF-2
	Rec.	HUMAN	FAM3D		Rec.	HUMAN	GDF-3
	Rec.	HUMAN	sFAS LIGAND		Rec.	HUMAN	GDF-5 (BMP-14/CDMP-1)
	Rec.	HUMAN	sFAS RECEPTOR		Rec.	MURINE	GDF-5 (BMP-14/CDMP-1)
	Rec.	HUMAN	sFRP-1		Rec.	HUMAN	GDF-7
	Rec.	HUMAN	sFRP4		Rec.	HUMAN	GDNF
	Rec.	HUMAN	FETUIN A/AHSG		Rec.	MURINE	GDNF
	Rec.	HUMAN	FETUIN-A (AHSG)		Rec.	RAT	GDNF
	Nat.	HUMAN	FETUIN-A (AHSG)		Rec.	HUMAN	GDNF FAMILY RECEPTOR ALPHA-1
	Rec.	HUMAN	FETUIN-B		Rec.	HUMAN	GHRELIN - ACYLATED (GHRELIN-28)
	Rec.	HUMAN	FGF-4		Rec.	HUMAN	GLP-1/GLUCAGON-LIKE PEPTIDE
	Rec.	HUMAN	FGF-5		Rec.	HUMAN	GLUCAGON RECEPTOR
	Rec.	HUMAN	FGF-6		Rec.	HUMAN	GLUCAGON-LIKE PEPTIDE-1 RECEPTOR
	Rec.	HUMAN	FGF-8		Rec.	HUMAN	GLUCOSE-REGULATED PROTEIN 78
	Rec.	HUMAN	FGF-9		Rec.	HUMAN	GLUTATHIONE S-TRANSFERASE KAPPA 1
	Rec.	MURINE	FGF-9		Rec.	HUMAN	GLYPICAN-4
	Rec.	HUMAN	FGF-10		Rec.	HUMAN	GM-CSF

PROTEINS

Rec.	MURINE	GM-CSF	Rec.	HUMAN	INTERLEUKIN-1 α	
Rec.	RAT	GM-CSF	Rec.	MURINE	INTERLEUKIN-1 α	
Rec.	HUMAN	GMF- β	Rec.	RAT	INTERLEUKIN-1 α	
Rec.	HUMAN	GP96 (HSP90B1)	Rec.	HUMAN	INTERLEUKIN-1 β	
Rec.	HUMAN	GRANULYSIN	Rec.	MURINE	INTERLEUKIN-1 β	
Rec.	MURINE	GRANZYME B BACULOVIRUS	Rec.	RAT	INTERLEUKIN-1 β	
Rec.	HUMAN	GREMLIN-1	Rec.	HUMAN	INTERLEUKIN-1RA	
Rec.	RAT	GRO/KC	Rec.	HUMAN	INTERLEUKIN-2	
Rec.	HUMAN	GRO/MGSA	Rec.	MURINE	INTERLEUKIN-2	
Rec.	HUMAN	GROWTH DIFFERENTIATION FACTOR-3	Rec.	RAT	INTERLEUKIN-2	
Rec.	HUMAN	GRO- β	Rec.	HUMAN	sINTERLEUKIN-2R α	
Rec.	RAT	GRO- β /MIP-2	Rec.	HUMAN	INTERLEUKIN-3	
Rec.	HUMAN	GRO- γ	Rec.	MURINE	INTERLEUKIN-3	
Rec.	MURINE	GRO- γ	Rec.	RAT	INTERLEUKIN-3 β	
			Rec.	HUMAN	INTERLEUKIN-4	
H	Rec.	HUMAN	HB-EGF	Rec.	MURINE	INTERLEUKIN-4
	Rec.	HUMAN	HCC-1	Rec.	RAT	INTERLEUKIN-4
	Rec.	HUMAN	HEART FABP	Rec.	HUMAN	sINTERLEUKIN-4R α
	Rec.	HUMAN	HEAT SHOCK 10kDa PROTEIN, MITOCHONDRIAL	Rec.	HUMAN	INTERLEUKIN-5
	Rec.	HUMAN	HEAT SHOCK 70kDa PROTEIN 1A/1B	Rec.	MURINE	INTERLEUKIN-5
	Rec.	HELICOBACTER PYLORI	HELICOBACTER PYLORI NEUTROPHIL-ACTIVATING PROTEIN A	Rec.	RAT	INTERLEUKIN-5
	Rec.		HEPATITIS B VIRUS PROTEIN X, Tag-free	Rec.	HUMAN	INTERLEUKIN-6
	Rec.	HUMAN	HEPATOCYTE GROWTH FACTOR	Rec.	MURINE	INTERLEUKIN-6
	Rec.	MURINE	HEPATOCYTE GROWTH FACTOR	Rec.	RAT	INTERLEUKIN-6
	Rec.	HUMAN	HEREGULIN β -1	Rec.	HUMAN	sINTERLEUKIN-6R α
	Rec.	HUMAN	HERSTATIN, Tag-free	Rec.	MURINE	INTERLEUKIN-7
	Rec.	HUMAN	HIGH MOBILITY GROUP PROTEIN B1	Rec.	RAT	INTERLEUKIN-7
	Rec.	HUMAN	HISTONE H3.3	Rec.	HUMAN	INTERLEUKIN-8
	Rec.		HIV-1 PROTEASE	Rec.	HUMAN	INTERLEUKIN-9
	Rec.		HIV-2 PROTEASE	Rec.	HUMAN	INTERLEUKIN-9
	Rec.	HUMAN	HSP90 CO-CHAPERONE CDC37	Rec.	MURINE	INTERLEUKIN-9
	Rec.	HUMAN	HVEM-FC	Rec.	RAT	INTERLEUKIN-9
				Rec.	HUMAN	INTERLEUKIN-10
				Rec.	MURINE	INTERLEUKIN-10
				Rec.	RAT	INTERLEUKIN-10
				Rec.	HUMAN	INTERLEUKIN-10
				Rec.	MURINE	INTERLEUKIN-10
				Rec.	RAT	INTERLEUKIN-10
				Rec.	HUMAN	INTERLEUKIN-11
				Rec.	MURINE	INTERLEUKIN-11
I	Rec.	HUMAN	I-309	Rec.	HUMAN	INTERLEUKIN-11
	Rec.	HUMAN	IFN- β	Rec.	MURINE	INTERLEUKIN-12
	Rec.	HUMAN	IFN- γ	Rec.	HUMAN	INTERLEUKIN-12
	Rec.	MURINE	IFN- γ	Rec.	MURINE	INTERLEUKIN-12
	Rec.	RAT	IFN- γ	Rec.	HUMAN	INTERLEUKIN-12 p40
	Rec.	HUMAN	IFN- γ	Rec.	HUMAN	INTERLEUKIN-12 p80
	Rec.	HUMAN	IFN- λ 1	Rec.	HUMAN	INTERLEUKIN-13
	Rec.	HUMAN	IFN- λ 2	Rec.	HUMAN	INTERLEUKIN-13
	Rec.	MURINE	IFN- λ 2	Rec.	MURINE	INTERLEUKIN-13
	Rec.	MURINE	IFN- λ 2	Rec.	RAT	INTERLEUKIN-13
	Rec.	HUMAN	IFN- ω	Rec.	RAT	INTERLEUKIN-13
	Rec.	HUMAN	IGF-BP1	Rec.	HUMAN	INTERLEUKIN-13 VARIANT
	Rec.	HUMAN	IGF-BP2	Rec.	HUMAN	INTERLEUKIN-15
	Rec.	HUMAN	IGF-BP3	Rec.	HUMAN	INTERLEUKIN-15
	Rec.	HUMAN	IGF-BP4	Rec.	MURINE	INTERLEUKIN-15
	Rec.	HUMAN	IGF-BP5	Rec.	RAT	INTERLEUKIN-15
	Rec.	HUMAN	IGF-BP6	Rec.	HUMAN	INTERLEUKIN-15
	Rec.	HUMAN	IGF-BP7	Rec.	HUMAN	INTERLEUKIN-16
	Rec.	HUMAN	IGF-I	Rec.	HUMAN	INTERLEUKIN-16
	Rec.	MURINE	IGF-I	Rec.	HUMAN	INTERLEUKIN-17
	Rec.	HUMAN	INOSITOL OXYGENASE	Rec.	MURINE	INTERLEUKIN-17
	Rec.	HUMAN	INSL5/INSL7 HYBRID	Rec.	HUMAN	INTERLEUKIN-17
	Rec.	HUMAN	INSULIN LIKE GROWTH FACTOR- II	Rec.	HUMAN	INTERLEUKIN-17E
	Rec.	HUMAN	INSULIN RECEPTOR	Rec.	HUMAN	INTERLEUKIN-17F
	Rec.	HUMAN	INSULIN-DEGRADING ENZYME	Rec.	MURINE	INTERLEUKIN-17F
	Rec.	HUMAN	INSULIN-LIKE GROWTH FACTOR-BINDING PROTEIN	Rec.	HUMAN	INTERLEUKIN-19
	Rec.	HUMAN		Rec.	HUMAN	INTERLEUKIN-19
	Rec.	HUMAN		Rec.	HUMAN	INTERLEUKIN-20
	Rec.	HUMAN		Rec.	HUMAN	INTERLEUKIN-21
	Rec.	HUMAN		Rec.	HUMAN	INTERLEUKIN-21
	Rec.	MURINE		Rec.	MURINE	INTERLEUKIN-21
	Rec.	HUMAN		Rec.	HUMAN	INTERLEUKIN-21
	Rec.	HUMAN		Rec.	HUMAN	INTERLEUKIN-22

PROTEINS

Rec.	MURINE	INTERLEUKIN-22	Rec.	HUMAN	MASPIN		
Rec.	HUMAN	INTERLEUKIN-23	Rec.	HUMAN	MCP-2		
Rec.	HUMAN	INTERLEUKIN-24	Rec.	MURINE	MCP-2		
Rec.	HUMAN	INTERLEUKIN-31	Rec.	HUMAN	MCP-3		
Rec.	MURINE	INTERLEUKIN-31	Rec.	MURINE	MCP-3		
Rec.	HUMAN	INTERLEUKIN-33	Rec.	HUMAN	MCP-4		
Rec.	MURINE	INTERLEUKIN-33	Rec.	MURINE	MCP-5		
Rec.	HUMAN	INTERLEUKIN-34	Rec.	HUMAN	M-CSF		
Rec.	HUMAN	INTERLEUKIN-36RA	Rec.	MURINE	M-CSF		
Rec.	HUMAN	INTERLEUKIN-36 β	Rec.	RAT	M-CSF		
Rec.	HUMAN	INTERLEUKIN-36 γ	Rec.	HUMAN	MDC		
Rec.	HUMAN	INTESTINAL FABP	Rec.	MURINE	MDC		
Rec.	HUMAN	IP-10	Rec.	HUMAN	MEC		
Rec.	RAT	IP-10	Rec.	MURINE	MEC		
Rec.	HUMAN	IRISIN	Rec.	HUMAN	METADHERIN		
Rec.	HUMAN	I-TAC	Rec.	HUMAN	MIA		
Rec.	MURINE	I-TAC	Rec.	HUMAN	MIA-2		
<hr/>			Rec.	HUMAN	MIDKINE		
J	Rec.	MURINE	JE/MCP-1	Rec.	MURINE	MIDKINE	
<hr/>			Rec.	HUMAN	MIF		
K	Rec.	HUMAN	KALLISTATIN	Rec.	HUMAN	MIF	
	Rec.	MURINE	KC	Rec.	TRICHOMONAS VAGINALIS	MIF PROTEIN	
	Rec.	HUMAN	KGF	Rec.	HUMAN	MIG	
	Rec.	HUMAN	KIM-1	Rec.	MURINE	MIG	
	Rec.	HUMAN	KLF4-TAT	Rec.	HUMAN	MIP-1 α	
	Rec.	HUMAN	KLOTHO CHO	Rec.	MURINE	MIP-1 α	
<hr/>			Rec.	RAT	MIP-1 α		
L	Nat.	HUMAN	LACTOFERRIN	Rec.	HUMAN	MIP-1 β	
	Rec.	HUMAN	LAG-1	Rec.	MURINE	MIP-1 β	
	Rec.	HUMAN	LD78 β	Rec.	RAT	MIP-1 β	
	Rec.	HUMAN	LEC	Rec.	HUMAN	MIP-3	
	Rec.	HUMAN	LECITHIN-CHOLESTEROL ACYLTRANSFERASE	Rec.	HUMAN	MIP-3 α	
	Rec.	HUMAN	LEPTIN, Tag-free	Rec.	MURINE	MIP-3 α	
	Rec.	MOUSE	LEPTIN, Tag-free	Rec.	HUMAN	MIP-3 β	
	Rec.	RAT	LEPTIN, Tag-free	Rec.	MURINE	MIP-3 β	
	Nat.	CANINE	LEUCINE-RICH ALPHA-2-GLYCOPROTEIN	Rec.	HUMAN	MIP-4	
	Nat.	HUMAN	LEUCINE-RICH ALPHA-2-GLYCOPROTEIN	Rec.	HUMAN	MIP-5	
	Rec.	HUMAN	LEUKOCYTE CELL-DERIVED CHEMOTAXIN-2	Rec.	HUMAN	MIP-5	
	Rec.	HUMAN	LIF	Rec.	HUMAN	MMP-1	
	Rec.	MURINE	LIGHT	Rec.	HUMAN	MMP-2	
	Rec.	HUMAN	LIGHT	Rec.	HUMAN	MMP-3	
	Rec.	HUMAN	LIN28-TAT	Rec.	RAT	MONOCYTE CHEMOTACTIC PROTEIN-1	
	Rec.	HUMAN	LIPOCALIN-2/NGAL	Rec.	HUMAN	mu-CRYSTALLIN	
	Rec.	HUMAN	LIPOPROTEIN LIPASE	Rec.	HUMAN	MUELLERIAN-INHIBITING FACTOR	
	Rec.	HUMAN	LIVER FABP	Rec.		MYCOPLASMA ARGININE DEIMINASE (ADI)	
	Rec.	HUMAN	LIVER FABP, Tag-free	Rec.	HUMAN	MYELIN FABP	
	Rec.	MURINE	LIX [70a.a.]	Rec.	HUMAN	MYOSIN-BINDING PROTEIN C CARDIAC-TYPE	
	Rec.	MURINE	LIX [92a.a.]	<hr/>			
	Rec.	HUMAN	LOW-DENSITY LIPOPROTEIN RECEPTOR-RELATED PROTEIN 4	N	Rec.	HUMAN	NANOG
	Rec.	MURINE	LUNGKINE	Rec.	HUMAN	NANOG-TAT	
	Rec.	HUMAN	LYMPHOTACTIN	Rec.	HUMAN	NAP-2	
	Rec.		LYSOBACTER ENZYMOGENES ARG-C	Rec.	HUMAN	NATRIURETIC PEPTIDES A	
	Rec.		LYSOPHOSPHATIDYLCHOLINE ACYLTRANSFERASE 1	Rec.	HUMAN	NATRIURETIC PEPTIDES B	
<hr/>			Rec.	HUMAN	NESFATIN-1		
M	Rec.	BETULA PENDULA	MAJOR POLLEN ALLERGEN BET V 1-A	Rec.	HUMAN	NEUDESIN	
	Rec.	MOUSE	MAJOR URINARY PROTEIN 1	Rec.	HUMAN	NEURITIN	
	Rec.	HUMAN	MAMMAGLOBIN A (FC CHIMERA)	Rec.	HUMAN	NEUROFILAMENT LIGHT POLYPEPTIDE	
	Rec.	HUMAN	MANF	Rec.	HUMAN	NEUROGLOBIN, Tag-free	
				Rec.	HUMAN	NEUROGLOBIN	
				Rec.	HUMAN	NEUROGRANIN	
				Rec.	MURINE	NEUROPOIETIN	

PROTEINS

Rec.	HUMAN	NEUROSERPIN	Rec.	HUMAN	sPLA2-X	
Rec.	HUMAN	NKG2D LIGAND 1	Rec.	HUMAN	sPLA2-XII	
Rec.	HUMAN	NKG2D LIGAND 2	Rec.	HUMAN	PLACENTA GROWTH FACTOR	
Rec.	HUMAN	NKG2D LIGAND 3	Rec.	HUMAN	PLACENTAL PROTEIN 13 (GALECTIN-13)	
Rec.	HUMAN	NKG2D LIGAND 4	Rec.	HUMAN	PLATELET GLYCOPROTEIN 4	
Rec.	HUMAN	NNT-1/BCSF-3	Rec.	HUMAN	PLGF-1	
Rec.	HUMAN	NOGGIN	Rec.	HUMAN	PLGF-2	
Rec.	MURINE	NOGGIN	Rec.	HUMAN	PLGF-3	
Rec.	HUMAN	NOV	Rec.	HUMAN	PODOCIN	
Rec.	HUMAN	NP-1	Rec.	CANINE	PROCALCITONIN	
Rec.	HUMAN	NT-3	Rec.	HUMAN	PROCALCITONIN	
Rec.	HUMAN	NT-4	Rec.	MOUSE	PROCALCITONIN	
			Rec.	PORCINE	PROCALCITONIN	
O	Rec.	HUMAN	Rec.	RAT	PROCALCITONIN	
	Rec.	HUMAN	Rec.	RHESUS	PROCALCITONIN	
	Rec.	HUMAN	Rec.	HUMAN	PROFILIN-1	
	Rec.	RAT	Rec.	HUMAN	PROGHRELIN	
	Rec.	HUMAN	Rec.	HUMAN	PROGUANYLIN	
	Rec.	HUMAN	Rec.	HUMAN	PROHIBITIN	
	Rec.	HUMAN	Rec.	HUMAN	PROKINETICIN-2	
	Rec.	HUMAN	Rec.	MURINE	PROLACTIN	
	Rec.	HUMAN	Rec.	RAT	PROLACTIN	
	Rec.	HUMAN	Nat.	HUMAN	PROLACTIN-INDUCIBLE PROTEIN	
	Rec.	HUMAN	Rec.	HUMAN	PROLINE-RICH ACIDIC PROTEIN 1	
	Rec.	HUMAN	Rec.	HUMAN	PROPROTEIN CONVERTASE SUBTILISIN/KEXIN TYPE 9	
	Rec.	HUMAN	Rec.	HUMAN	PROSTAGLANDIN D SYNTHASE	
	Rec.	HUMAN	Nat.	HUMAN	PROSTATE-SPECIFIC ANTIGEN	
	Rec.	HUMAN	Rec.	HUMAN	PROSTATE-SPECIFIC GENE-1	
	Rec.	HUMAN	Rec.	HUMAN	PROTEIN DELTA HOMOLOG 1	
	Rec.	HUMAN	Rec.	HUMAN	PROTEIN DISULFIDE-ISOMERASE A3	
P	Rec.	HUMAN	Rec.	HUMAN	PROUROGUANYLIN	
	Rec.	HUMAN	Rec.	HUMAN	PTHrP	
	Rec.	HUMAN	Rec.	HUMAN	PULMONARY SURFACTANT-ASSOCIATED PROTEIN B	
	Rec.	HUMAN	Rec.	HUMAN	PYRUVATE KINASE M2	
	Rec.	HUMAN				
	Rec.	HUMAN	R	Rec.	HUMAN	RANTES
	Rec.	HUMAN	Rec.	MURINE	RANTES	
	Rec.	HUMAN	Rec.	RAT	RANTES	
	Rec.	HUMAN	Rec.	HUMAN	REGENERATING PROTEIN 1 ALPHA	
	Rec.	MURINE	Rec.	HUMAN	REGENERATING PROTEIN 1 BETA	
	Rec.	HUMAN	Rec.	HUMAN	REGENERATING PROTEIN 4	
	Rec.	MURINE	Rec.	HUMAN	REGUCALCIN	
	Rec.	HUMAN	Rec.	HUMAN	RELAXIN-2	
	Rec.	HUMAN	Rec.	HUMAN	RELAXIN-3	
	Rec.	HUMAN	Rec.	MURINE	RELMβ	
	Rec.	HUMAN	Rec.	HUMAN	RENALASE	
	Rec.	HUMAN	Rec.	HUMAN	RENIN	
	Rec.	HUMAN	Rec.	HUMAN	RENIN RECEPTOR	
	Rec.	MURINE	Rec.	HUMAN	RESISTIN	
	Rec.	HUMAN	Rec.	MOUSE	RESISTIN	
	Rec.	MURINE	Rec.	RAT	RESISTIN	
	Rec.	HUMAN	Rec.	HUMAN	RESISTIN, Tag-free	
	Rec.	HUMAN	Rec.	MOUSE	RESISTIN-LIKE MOLECULE-ALPHA	
	Rec.	HUMAN	Rec.	HUMAN	RESISTIN-LIKE MOLECULE-BETA	
	Rec.	HUMAN	Rec.	MOUSE	RESISTIN-LIKE MOLECULE-GAMMA	
	Rec.	HUMAN	Rec.	HUMAN	RETINOL BINDING PROTEIN 4	
	Rec.	HUMAN	Rec.	HUMAN	R-SPONDIN-1	
	Rec.	HUMAN	Rec.	HUMAN	R-SPONDIN-2	
	Rec.	HUMAN	Rec.	HUMAN	R-SPONDIN-3	

PROTEINS

S	Rec.	HUMAN	S100A1	Rec.	HUMAN	TECK	
	Rec.	HUMAN	S100A2	Rec.	HUMAN	TESTIS FABP	
	Rec.	HUMAN	S100A3	Rec.	HUMAN	TGF-ALPHA	
	Rec.	HUMAN	S100A4	Rec.	HUMAN	TGF-BETA 1	
	Rec.	HUMAN	S100A5	Rec.	HUMAN	TGF-BETA 1	
	Rec.	HUMAN	S100A6	Rec.	HUMAN	TGF-BETA 2	
	Rec.	HUMAN	S100A7	Rec.	HUMAN	TGF-BETA 3	
	Rec.	HUMAN	S100A7A	Rec.	HUMAN	TGF-β2	
	Rec.	HUMAN	S100A8	Rec.	HUMAN	THROMBOMODULIN	
	Rec.	HUMAN	S100A9	Rec.	HUMAN	THYMIC STROMAL LYMPHOPOIETIN	
	Rec.	HUMAN	S100A10	Rec.	HUMAN	THYMOSIN-β4	
	Rec.	HUMAN	S100A11	Rec.	HUMAN	THYROSTIMULIN ALPHA SUBUNIT	
	Rec.	HUMAN	S100A12	Rec.	HUMAN	THYROSTIMULIN BETA SUBUNIT	
	Rec.	HUMAN	S100A13	Rec.	HUMAN	TIGAR	
	Rec.	HUMAN	S100A14	Rec.	HUMAN	TIGAR-TAT	
	Rec.	HUMAN	S100A16	Rec.	HUMAN	TIMP-1	
	Rec.	HUMAN	S100G	Rec.	HUMAN	TIMP-2	
	Rec.	HUMAN	S100P	Rec.	HUMAN	TL-1A	
	Rec.	HUMAN	SAP PROTEIN	Rec.	HUMAN	TLR-3	
	Rec.		SARS-CoV NUCLEOCAPSID PROTEIN	Rec.	HUMAN	TNF-α	
	Rec.	HUMAN	SCF	Rec.	MURINE	TNF-α	
	Rec.	MURINE	SCF	Rec.	RAT	TNF-α	
	Rec.	RAT	SCF	Rec.	HUMAN	TNF-β	
	Rec.	HUMAN	SCGF-α	Rec.	HUMAN	sTNF RECEPTOR TYPE I	
	Rec.	HUMAN	SCGF-β	Rec.	HUMAN	sTNF RECEPTOR TYPE II	
	Rec.	HUMAN	SCLEROSTIN	Rec.	HUMAN	TPO	
	Rec.	MURINE	SDF-1α	Rec.	MURINE	TPO	
	Rec.	RAT	SDF-1α	Rec.	RAT	TPO	
	Rec.	HUMAN	SDF-1β	Rec.	MURINE	TRAIL	
	Rec.	MURINE	SDF-1β	Rec.	HUMAN	sTRAIL RECEPTOR-1	
	Rec.	RAT	SDF-1β	Rec.	HUMAN	sTRAIL RECEPTOR-2	
	Rec.	HUMAN	SDLL-1	Rec.	HUMAN	sTRAIL/APO2L	
	Rec.	HUMAN	SDLL-4	Rec.	HUMAN	TREFOIL FACTOR 1	
	Rec.	HUMAN	SECRETAGOGIN	Rec.	HUMAN	TREFOIL FACTOR 2	
	Rec.	RAT	SECRETAGOGIN	Rec.	HUMAN	TREFOIL FACTOR 3	
	Rec.	HUMAN	SECRETOGLOBIN FAMILY 1D MEMBER 1	Rec.	RAT	TREFOIL FACTOR 3	
	Rec.	HUMAN	SECRETOGLOBIN FAMILY 3A MEMBER 2	Rec.	HUMAN	TSG	
	Rec.	HUMAN	SERGLYCIN	Rec.	HUMAN	TSLP	
	Rec.	HUMAN	SEX HORMONE-BINDING GLOBULIN CHO	Rec.	HUMAN	TUBULIN POLYMERIZATION-PROMOTING PROTEIN	
	Rec.	MURINE	SF-20	Rec.	HUMAN	TUMOR NECROSIS FACTOR LIGAND SUPERFAMILY MEMBER 12	
	Rec.	HUMAN	SLIT2-N	Rec.	HUMAN	TWEAK	
	Rec.	HUMAN	SLURP-1 (Dimeric)	Rec.	HUMAN	TWEAK RECEPTOR	
	Rec.	HUMAN	SLURP-1 (Monomeric)				
	Rec.	HUMAN	SONIC HEDGEHOG (SHH)				
	Rec.	MURINE	SONIC HEDGEHOG (SHH)				
	Rec.	HUMAN	SOX2	U	Rec.	HUMAN	UBIQUITIN CARBOXYL-TERMINAL HYDROLASE ISOZYME L1
	Rec.	HUMAN	SOX2-TAT	Rec.	HUMAN	ULBP5	
	Rec.	HUMAN	sOX40 LIGAND	Nat.	CANINE	UROMODULIN	
	Rec.	HUMAN	SPARC/OSTEONECTIN	Nat.	FELINE	UROMODULIN	
	Rec.	HUMAN	STANNIOCALCIN 1	Nat.	HUMAN	UROMODULIN	
	Rec.	HUMAN	STANNIOCALCIN 2	Nat.	PORCINE	UROMODULIN	
	Rec.	HUMAN	sRAGE				
	Rec.	HUMAN	sRANK LIGAND	V	Rec.	HUMAN	VANIN-1
	Rec.	MURINE	sRANK LIGAND	Rec.	HUMAN	VAP-1	
	Rec.	RAT	sRANK LIGAND	Rec.	HUMAN	VASPIN	
	Rec.	HUMAN	sRANK RECEPTOR	Rec.	HUMAN	VEGF121	
			Rec.	HUMAN	VEGF165		
T	Rec.	HUMAN	TACI (TNFRSF13B)	Rec.	MURINE	VEGF165	
	Rec.	HUMAN	TAFA-2	Rec.	RAT	VEGF165	
	Rec.	HUMAN	TARC	Rec.	HUMAN	VEGF-B	

PROTEINS

Rec.	HUMAN	VEGF-C
Rec.	HUMAN	VEGF-D
Rec.	HUMAN	VEGF-R1/FLT-1
Rec.	HUMAN	VIMENTIN
Rec.	HUMAN	VISFATIN
Rec.	HUMAN	VISININ-LIKE PROTEIN 1
Rec.	HUMAN	VITRONECTIN

W

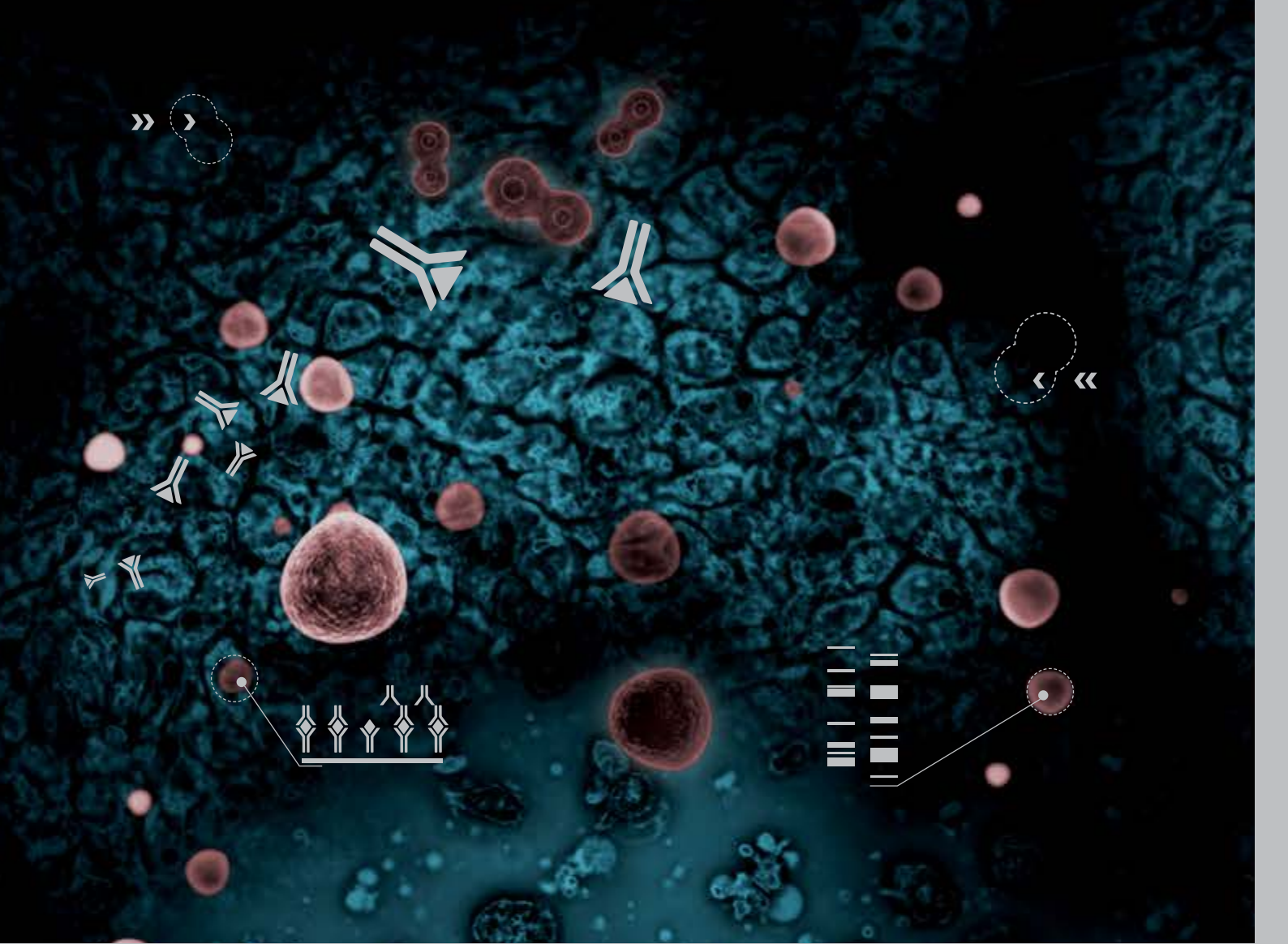
Rec.	HUMAN	WAP FOUR-DISULFIDE CORE DOMAIN PROTEIN 2
Rec.	HUMAN	WISP-3
Rec.	HUMAN	WNT-1
Rec.	HUMAN	WNT1-INDUCIBLE-SIGNALING PATHWAY PROTEIN 1
Rec.	MURINE	WNT-3A

X

Rec.	HUMAN	XYLOSYLTRANSFERASE 2
------	-------	----------------------

Z

Rec.	HUMAN	ZINC-ALPHA-2-GLYCOPROTEIN
Rec.	HUMAN	ZYMOGEN GRANULE MEMBRANE PROTEIN 16



BioVendor – Laboratorni medicina a.s.

Research & Diagnostic Products Division
Karasek 1767/1, 621 00 Brno, CZECH REPUBLIC
Phone: +420 549 124 185, Fax: +420 549 211 460
e-mail: info@biovendor.com

Germany and Switzerland:

BioVendor GmbH

Otto-Hahn-Straße 16, 34123 Kassel, GERMANY
Phone: +49 6221 4339 100, Fax: +49 6221 4339 111
e-mail: infoEU@biovendor.com

› www.biovendor.com

Austria:

BioVendor GesmbH

Gaudenzdorfer Gürtel 43-45, 1120, Vienna, AUSTRIA
Phone: +43 1 890 9025, Fax: +43 1 890 5163
E-mail: infoAustria@biovendor.com

USA, Canada and Mexico:

BioVendor, LLC

128 Bingham Rd., Suite 1300 Asheville, NC 28806, USA
Phone: +1-800-404-7807, +1-828-575-9250, Fax: +1-828-575-9251
e-mail: infoUSA@biovendor.com

Oxford Biosystems Ltd

115J Olympic Avenue, Milton Park, Oxfordshire
OX14 4SA, UNITED KINGDOM
Phone: 01235 431390
E-mail: sales@oxfordbiosystems.com

› www.oxfordbiosystems.com

