

NEURAL TISSUE DAMAGE MARKERS

Immunoassays



HUMAN S100B ELISA

Cat. No.: RD192090100R

RUO

Intended use

The RD192090100R Human S100B ELISA is a sandwich enzyme immunoassay for the quantitative measurement of human S100B in serum, heparin plasma and cerebrospinal fluid.

- › The total assay time is less than 5 hours
- › The kit measures S100B protein in serum, heparin plasma and cerebrospinal fluid
- › Assay format is 96 wells
- › Quality Controls are human serum based. Animal serum is used for Master Standard and for Dilution Buffer preparation
- › Standard is native protein based
- › Components of the kit are provided ready to use, concentrated or lyophilized

Clinical application

- › Neural tissue damage
- › Acute myocardial infarction

Immunoassays

Test principle

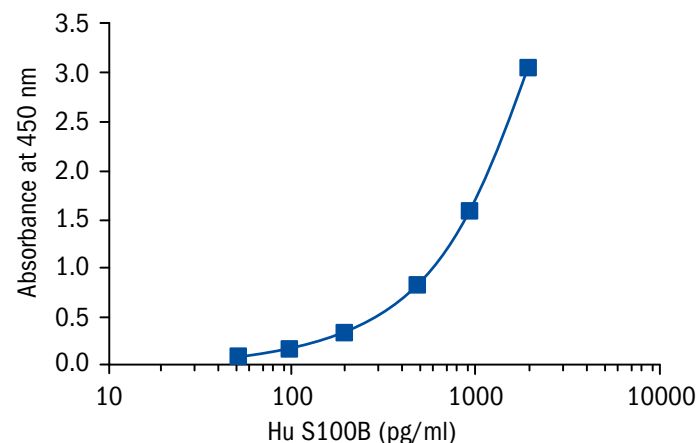
In the BioVendor Human S100B ELISA, standards, quality controls and samples are incubated in microplate wells pre-coated with polyclonal anti-cow S100B antibody. After 120 minutes incubation and washing, biotin labelled monoclonal anti-human S100B antibody is added to the wells and incubated for 60 minutes with captured S100B. After another washing, Streptavidin- HRP Conjugate is added. After 30 minutes incubation and the last washing step, the remaining

conjugate is allowed to react with the Substrate Solution (TMB). The reaction is stopped by addition of acidic solution and absorbance of the resulting yellow product is measured. The absorbance is proportional to the concentration of S100B. A standard curve is constructed by plotting absorbance values against concentrations of Standards, and concentrations of unknown samples are determined using this standard curve.

HUMAN S100B ELISA

Cat.No.: RD192090100R

Assay format	Sandwich ELISA, Biotin-labelled antibody, 96 wells/kit
Samples	Serum, Plasma (heparin), Cerebrospinal fluid
Controls	QC-Low, QC-High
Standards	0.05 to 2 ng/ml
Limit of detection	15 pg/ml
Cross-reactivity	Bovine, Cat, Goat, Hamster, Pig, Rabbit, Rat



Summary of protocol

- Reconstitute QCs and Master Standard and prepare set of Standards
- Dilute QCs, set of standards and samples 4×
- Add 100 μ l Standards, QCs and samples
- Incubate at RT for 120 min/300 rpm
- Wash plate 3 times
- Add 100 μ l Biotin Labelled Antibody solution
- Incubate at RT for 60 min/300 rpm
- Wash plate 5 times
- Add 100 μ l Streptavidin-HRP Conjugate
- Incubate at RT for 30 min/300 rpm
- Wash plate 5 times
- Add 100 μ l Substrate Solution
- Incubate at RT for 15 min
- Add 100 μ l Stop Solution
- Read absorbance and calculate results

Related products

- Glial Fibrillary Acidic Protein Human ELISA (GFAP) RD192072200R

Date of issue September 2013



BioVendor – Laboratorní medicína a.s.

Karasek 1767/1, 621 00 Brno, Czech Republic

Phone: +420 549 124 185, Fax: +420 549 211 460

E-mail: info@biovendor.com

➤ www.biovendor.com

➤ Visit www.biovendor.com to find more information about BioVendor products.