

ENERGY METABOLISM AND BODY WEIGHT REGULATION

Immunoassays



HUMAN RESISTIN ELISA

Cat. No.: RD191016100

IVD CE

Intended use

The RD191016100 Human Resistin ELISA is a sandwich enzyme immunoassay for the quantitative measurement of human resistin in serum and plasma.

- The total assay time is less than 4 hours
- The kit measures total resistin in serum and plasma (heparin, citrate or EDTA)
- Assay format is 96 wells
- Quality Controls are human serum based. No animal sera are used
- Standard is recombinant protein based
- Components of the kit are provided ready to use, concentrated or lyophilized

Clinical application

- Energy metabolism and body weight regulation

Test principle

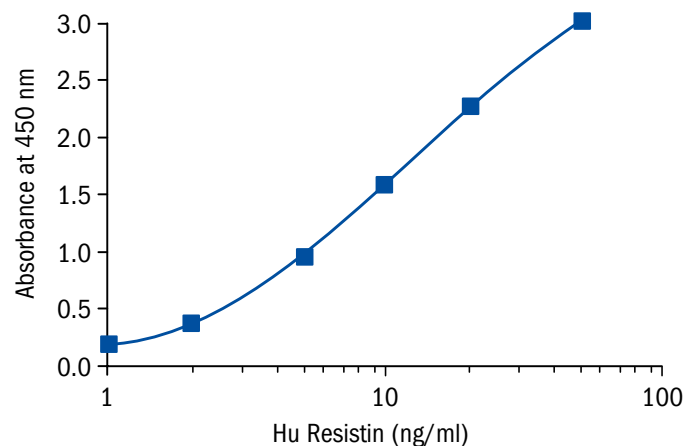
In the BioVendor Human Resistin ELISA, Standards, Quality Controls and samples are incubated in microplate wells pre-coated with polyclonal anti-human resistin antibody. After 60 minutes incubation and washing, biotin-labelled second polyclonal anti-human resistin antibody is added and incubated with captured resistin for 60 minutes. After another washing, streptavidin-HRP conjugate is added. After 60 minutes incubation and the last washing step, the remaining con-

jugate is allowed to react with the substrate solution (TMB). The reaction is stopped by addition of acidic solution and absorbance of the resulting yellow product is measured. The absorbance is proportional to the concentration of resistin. A standard curve is constructed by plotting absorbance values against concentrations of Standards, and concentrations of unknown samples are determined using this standard curve.

HUMAN ADIPONECTIN ELISA, HIGH SENSITIVITY

Cat.No.: RD191016100

Assay format	Sandwich ELISA, Biotin-labelled antibody, 96 wells/kit
Samples	Serum, Plasma (EDTA, citrate, heparin)
Controls	QC-Low, QC-High
Standards	1 to 50 ng/ml
Limit of detection	0.012 ng/ml
Cross-reactivity	Horse, Monkey, Mouse, Pig



Summary of protocol

- Reconstitute QCs and Master Standard and prepare set of Standards
- Dilute QCs, Standards and samples 3×
- Add 100 µl Standards, QCs and samples
- Incubate at RT for 1 hour/300 rpm
- Wash plate 3 times
- Add 100 µl Biotin Labelled Antibody
- Incubate at RT for 1 hour/300 rpm
- Wash plate 3 times
- Add 100 µl Streptavidin HRP
- Incubate at RT for 1 hour/300 rpm
- Wash plate 3 times
- Add 100 µl Substrate Solution
- Incubate at RT for 10 min
- Add 100 µl Stop Solution
- Read absorbance and calculate results

Related products

- Resistin Human E. coli, Tagless RD172016301
- Resistin Human E. coli RD172016300
- Resistin Human, Goat Polyclonal Antibody RD184016220
- Resistin Human, Rabbit Polyclonal Antibody RD181016220

Date of issue September 2013



BioVendor – Laboratorní medicína a.s.

Karasek 1767/1, 621 00 Brno, Czech Republic

Phone: +420 549 124 185, Fax: +420 549 211 460

E-mail: info@biovendor.com

› www.biovendor.com

› Visit www.biovendor.com to find more information about BioVendor products.