

Secretagogin Human, Sheep Polyclonal Antibody

Product Data Sheet

Source of Antigen: *E. coli*

Host: Sheep

Cat. No.:

RD184120100

(0.1 mg)

Other names: SCGN, SECRET

Research topic

Diabetology - Other Relevant Products, Neural tissue markers, Oncology

Preparation

The antibody was raised in sheep by immunization with the recombinant Human Secretagogin.

Amino Acid Sequence

The immunization antigen (33.3 kDa) is a protein containing 276 AA of recombinant Human Secretagogin and 10 extra AA, N-terminal His-tag (highlighted). The AA sequence is identical to UniProtKB/Swiss-Prot entry O76038.

MKHHHHHHAS MDSREPTLG RLDAAGFWQV WRRFDADEKG YIEEKELDAF FLHMLMKLGT DDTVMKANLH KVKQQFMTTQ
DASKDGRIRM KELAGMFLSE DENFLLLFRR ENPLDSSVEF MQIWRKYDAD SSGFISAAEL RNFLRDLFLH HKKAISEAKL
EEYTGTMMKI FDRNKDGRLD LNDLARILAL QENFLLQFKM DACSTEERKR DFEKIFAYYD VSKTGALEGP EVDGFVKDMM
ELVQPSISGV DLDKFREILL RHCDVKNKDGK IQKSELALCL GLKINP

Species Reactivity

Human

Not yet tested in other species.

Purification Method

Immunoaffinity chromatography on a column with immobilized recombinant Human Secretagogin.

Antibody Content

0.1 mg (determined by BCA method, BSA was used as a standard)

Formulation

The antibody is lyophilized in 0.05 M phosphate buffer, 0.1 M NaCl, pH 7.2. **AZIDE FREE.**

Reconstitution

Add 0.2 ml of deionized water and let the lyophilized pellet dissolve completely. Slight turbidity may occur after reconstitution, which does not affect activity of the antibody. In this case clarify the solution by centrifugation.

Shipping

At ambient temperature. Upon receipt, store the product at the temperature recommended below.

Storage/Stability

The lyophilized antibody remains stable and fully active until the expiry date when stored at -20°C. Aliquot the product after reconstitution to avoid repeated freezing/thawing cycles and store frozen at -80°C. Reconstituted antibody can be stored at 4°C for a limited period of time; it does not show decline in activity after one week at 4°C.

Expiration

See vial label.

Lot Number

See vial label.

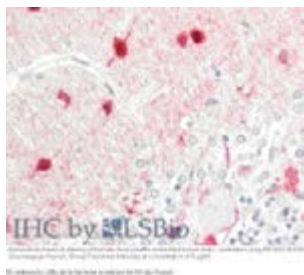
Quality Control Test

Indirect ELISA - to determine titer of the antibody
SDS PAGE - to determine purity of the antibody

Applications

ELISA, Immunohistochemistry, Western blotting

Antibodies application



References to this Product

- Puthussery T, Gayet-Primo J, Taylor WR, Haverkamp S. *Immunohistochemical identification and synaptic inputs to the diffuse bipolar cell type DB1 in macaque retina.* J Comp Neurol. 2011 Dec 15;519 (18):3640-56

HEADQUARTERS: BioVendor Laboratorní medicína, a.s.	Karasek 1767/1	621 00 Brno CZECH REPUBLIC	Phone: +420-549-124-185 Fax: +420-549-211-460	E-mail: info@biovendor.com sales@biovendor.com Web: www.biovendor.com
AUSTRIA: BioVendor GesmbH	Gaudenzdorfer Gürtel 43-45	1120 Vienna AUSTRIA	Phone: +43-1-89090-25 Fax: +43-1-89051-63	E-mail: infoAustria@biovendor.com
GERMANY, SWITZERLAND: BioVendor GmbH	Otto-Hahn-Straße 16	34123 Kassel GERMANY	Phone: +49-6221-433-9100 Fax: +49-6221-433-9111	E-mail: infoEU@biovendor.com
USA, CANADA AND MEXICO: BioVendor LLC	128 Bingham Rd. Suite 1300	Asheville, NC 28806 USA	Phone: +1-828-575-9250 +1-800-404-7807 Fax: +1-828-575-9251	E-mail: infoUSA@biovendor.com