

## sPLA2-V Human E. coli

### Product Data Sheet

**Type:** Recombinant

**Source:** E. coli

**Species:** Human

**Other names:** Calcium-dependent phospholipase A2, Group V phospholipase A2, PLA2-10, Phosphatidylcholine 2-acylhydrolase 5, PLA2G5

**Cat. No.:**

RD172081100

(0.1 mg)

### Description

Total 134 AA. MW: 15.5 kDa (calculated). UniProtKB acc.no. P39877. N-Terminal His-tag, 16 extra AA (highlighted).

### Amino Acid Sequence

**MRGSHHHHHH GMASHM**GLLD LKSMIEKVTG KNALTNYGFY GCYCGWGGRG TPKDGTDWCC WAHDHCYGRLEEKGCNIRTTQ  
SYKYRFAWGV VTCEPGPFCH VNLACDRKL VYCLKRNLRS YNPQYQYFPN ILCS

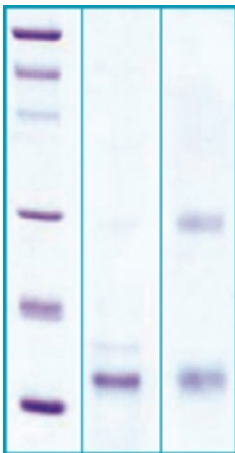
### Source

E. coli

### Purity

>95%

### SDS-PAGE gel



12% SDS-PAGE separation of Human sPLA2-V

1. M.W. marker - 14, 21, 31, 45, 66, 97 kDa

2. reduced and heated sample, 5µg/lane

3. non-reduced and non-heated sample, 5µg/lane

### Endotoxin

< 1.0 EU/ug

### Formulation

Filtered (0.4 µm) and lyophilized in 0.5 mg/mL in 0.05M Acetate buffer pH=4.0

### Reconstitution

Add 0.1M Acetate buffer pH4 to prepare a working stock solution of approximately 0.5 mg/mL and let the lyophilized pellet dissolve completely. For conversion into higher pH value, we recommend intensive dilution by relevant buffer to a concentration of 10µg/mL. In higher concentrations the solubility of this antigen is limited. Filter sterilize your culture media/working solutions containing this non-sterile product before using in cell culture.

### Shipping

At ambient temperature. Upon receipt, store the product at the temperature recommended below.

## Storage, Stability/Shelf Life

Store lyophilized protein at -80°C. Lyophilized protein remains stable until the expiry date when stored at -80°C. Aliquot reconstituted protein to avoid repeated freezing/thawing cycles and store at -80°C for long term storage. Reconstituted protein can be stored at 4°C for a limited period of time; it does not show any change after two weeks at 4°C.

## Quality Control Test

BCA to determine quantity of the protein.  
SDS PAGE to determine purity of the protein.  
LAL TEST to determine endotoxin level.

## Applications

Western blotting

## Note

This product is intended for research use only.

## References to this Product

- Ronkko S, Rekonen P, Kaamiranta K, Puustjarvi T, Terasvirta M, Uusitalo H. *Phospholipase A2 in chamber angle of normal eyes and patients with primary open angle glaucoma and exfoliation glaucoma.* Mol Vis. 2007;13:408-17

<b>HEADQUARTERS:</b> BioVendor Laboratorní medicina, a.s.	Karasek 1767/1	621 00 Brno CZECH REPUBLIC	Phone: +420-549-124-185 Fax: +420-549-211-460	E-mail: info@biovendor.com sales@biovendor.com Web: www.biovendor.com
AUSTRIA: BioVendor GesmbH	Nußdorfer Straße 20/10	1090 Vienna AUSTRIA	Phone: +43-1-89090-25 Fax: +43-1-89090-2515	E-mail: infoAustria@biovendor.com
GERMANY, SWITZERLAND: BioVendor GmbH	Otto-Hahn-Straße 16	34123 Kassel GERMANY	Phone: +49-6221-433-9100 Fax: +49-6221-433-9111	E-mail: infoEU@biovendor.com
USA, CANADA AND MEXICO: BioVendor LLC	128 Bingham Rd. Suite 1300	Asheville, NC 28806 USA	Phone: +1-828-575-9250 +1-800-404-7807 Fax: +1-828-575-9251	E-mail: infoUSA@biovendor.com