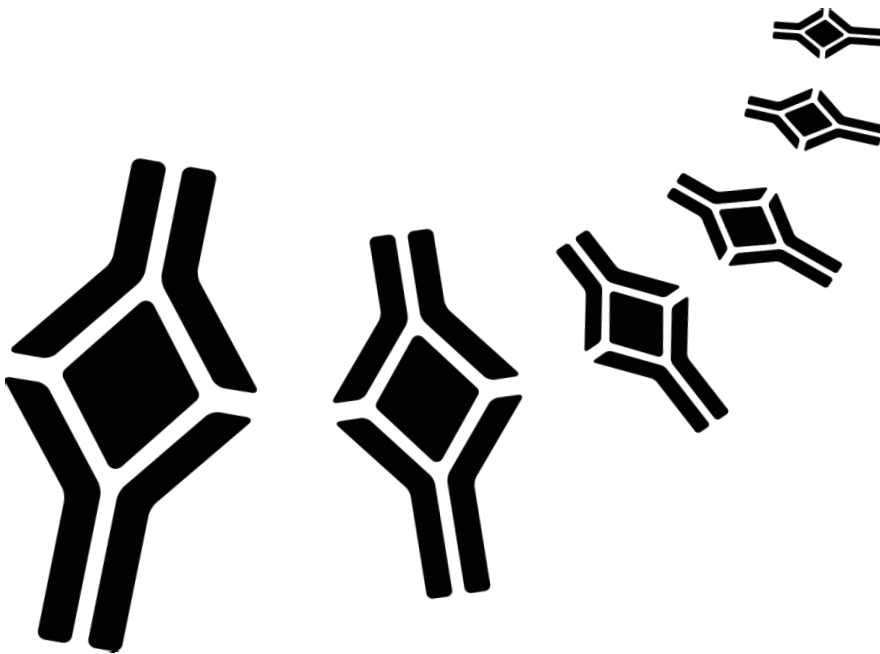


BioVendor

Research
and Diagnostic Products



HUMAN SPECAM-1 ELISA

Product Data Sheet

Cat. No.: RAF109R

For Research Use Only

CONTENTS

1	INTENDED USE	3
2	SUMMARY	3
3	PRINCIPLES OF THE TEST	4
4	REAGENTS PROVIDED	5
5	STORAGE INSTRUCTIONS – ELISA KIT	5
6	SPECIMEN COLLECTION AND STORAGE INSTRUCTIONS	5
7	MATERIALS REQUIRED BUT NOT PROVIDED	6
8	PRECAUTIONS FOR USE	6
9	PREPARATION OF REAGENTS	7
10	TEST PROTOCOL	9
11	CALCULATION OF RESULTS	11
12	LIMITATIONS	14
13	PERFORMANCE CHARACTERISTICS	14
14	REAGENT PREPARATION SUMMARY	18
15	TEST PROTOCOL SUMMARY	19

**➤➤ This kit is manufactured by:
BioVendor – Laboratorní medicína, a.s.**

➤➤ Use only the current version of Product Data Sheet enclosed with the kit!

1 INTENDED USE

The human sPECAM-1 ELISA is an enzyme-linked immunosorbent assay for the quantitative detection of human sPECAM-1. **The human sPECAM-1 ELISA is for research use only. Not for diagnostic or therapeutic procedures.**

2 SUMMARY

PECAM-1 (platelet endothelial cell adhesion molecule-1) also called CD31 and EndoCAM is a newly characterized adhesion molecule that belongs to the immunoglobulin superfamily [14]. PECAM-1 is a transmembrane glycoprotein with a molecular weight of approximately 130 kDa, depending on the degree of glycosylation.

PECAM-1 is constitutively expressed on all vascular cells and has provided a useful immunohistochemical marker of blood vessels, particularly in the setting of angiogenesis. It has also been found on platelets, monocytes, neutrophils and CD8⁺ T cells. Bone marrow stem cells and transformed cell lines of the myeloid and megakaryocytic lineage also express PECAM-1. Interestingly, PECAM-1 was also detected on human, mouse and rat solid tumor lines .

Recent studies suggest a role for PECAM-1 in the inflammatory process and leukocyte-endothelial interaction. The process of leukocyte emigration to the site of inflammation can be dissected into three successive stages: (1) rolling, mediated by the selectins; (2) tight adhesion mediated by ICAMs and their counter-receptors, the integrins; and (3) transmigration of leukocytes through intercellular junctions of vascular endothelial cells which requires PECAM-1. PECAM-1 appears to be able to interact both with itself (homophilic binding) and with other "non-PECAM-1" molecules (heterophilic binding).

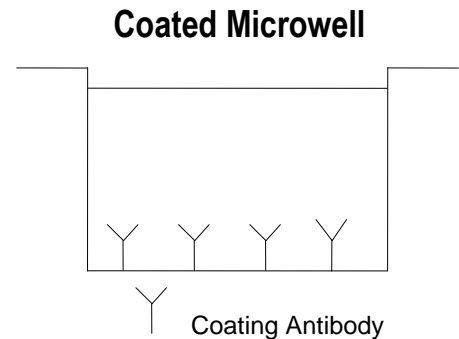
PECAM-1 is an early and sensitive marker for tumor-induced angiogenesis. Several data have suggested that PECAM-1 may be involved in the process of angiogenesis in a developing vertebrate embryo as well as during metastases formation.

Besides the membrane-bound form of PECAM-1 a soluble form of the molecule exists, which is 5-10 kDa smaller than cell-associated PECAM-1, and contains the cytoplasmic tail. This form of soluble PECAM-1 is encoded by an alternatively spliced mRNA from which the exon containing the transmembrane domain has been removed. Soluble PECAM-1 was detected in normal human plasma. Antibodies against PECAM-1 have been shown to exhibit a high degree of sensitivity and specificity for endothelial cells in normal, inflammatory and neoplastic tissue. PECAM-1 is a sensitive and specific marker for detection of melanoma-associated angiogenesis. Thus, PECAM-1 may be a useful marker for early detection of tumor metastasis. Compared to normal gut, there is a significant increase of PECAM-1-positive vessels in the mucosa of uninvolved ulcerative colitis. In gingivitis and periodontitis lesion the expression of PECAM-1 on mononuclear infiltrates increases significantly with increasing size of infiltrate.

3 PRINCIPLES OF THE TEST

An anti-human sPECAM-1 coating antibody is adsorbed onto microwells.

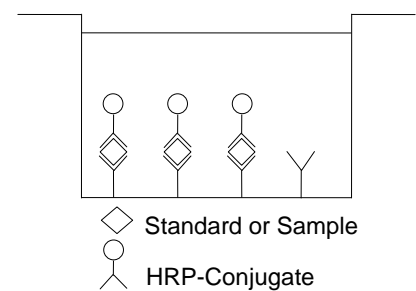
Figure 1



Human sPECAM-1 present in the sample or standard binds to antibodies adsorbed to the microwells. A HRP-conjugated anti-human sPECAM-1 antibody is added and binds to human sPECAM-1 captured by the first antibody.

Figure 2

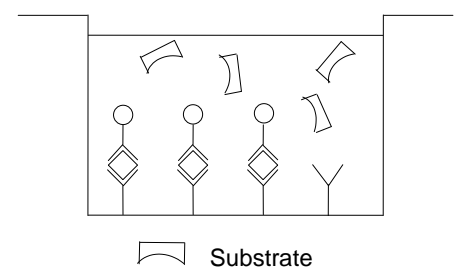
First Incubation



Following incubation unbound HRP-conjugated anti-human sPECAM-1 is removed during a wash step, and substrate solution reactive with HRP is added to the wells.

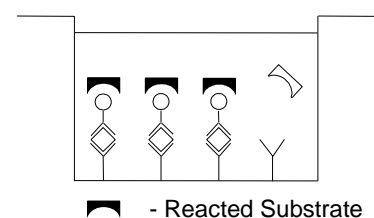
Figure 3

Second Incubation



A coloured product is formed in proportion to the amount of human sPECAM-1 present in the sample or standard. The reaction is terminated by addition of acid and absorbance is measured at 450 nm. A standard curve is prepared from 7 human sPECAM-1 standard dilutions and human sPECAM-1 concentration determined.

Figure 4



4 REAGENTS PROVIDED

- 1 aluminium pouch with a **Antibody Coated Microtiter Strips** with monoclonal antibody to human sPECAM-1
- 2 vials (5 µl) **HRP-Conjugate** anti-human sPECAM-1 monoclonal antibody
- 2 vials (250µl) human sPECAM-1 **Standard**, 60 ng/ml
- 1 vial (12 ml) **Sample Diluent**
- 1 vial (5 ml) **Assay Buffer Concentrate** 20x (PBS with 1% Tween 20 and 10% BSA)
- 1 bottle (50 ml) **Wash Buffer Concentrate** 20x (PBS with 1% Tween 20)
- 1 vial (15 ml) **Substrate Solution** (tetramethyl-benzidine)
- 1 vial (15 ml) **Stop Solution** (1M Phosphoric acid)
- 2 **Adhesive Films**

5 STORAGE INSTRUCTIONS – ELISA KIT

Store kit reagents between 2° and 8°C. Immediately after use remaining reagents should be returned to cold storage (2° to 8°C). Expiry of the kit and reagents is stated on labels. Expiry of the kit components can only be guaranteed if the components are stored properly, and if, in case of repeated use of one component, this reagent is not contaminated by the first handling.

6 SPECIMEN COLLECTION AND STORAGE INSTRUCTIONS

Cell culture supernatant, serum, plasma (EDTA, citrate, heparin) and urine were tested with this assay. Other biological samples might be suitable for use in the assay.

Remove serum or plasma from the clot or cells as soon as possible after clotting and separation.

Pay attention to a possible “**Hook Effect**” due to high sample concentrations (see chapter 11). Samples containing a visible precipitate must be clarified prior to use in the assay. Do not use grossly hemolyzed or lipemic specimens.

Samples should be aliquoted and must be stored frozen at -20°C to avoid loss of bioactive human sPECAM-1. If samples are to be run within 24 hours, they may be stored at 2° to 8°C (for sample stability refer to 13.5).

Avoid repeated freeze-thaw cycles. Prior to assay, the frozen sample should be brought to room temperature slowly and mixed gently.

7 MATERIALS REQUIRED BUT NOT PROVIDED

- 5 ml and 10 ml graduated pipettes
- 5 µl to 1000 µl adjustable single channel micropipettes with disposable tips
- 50 µl to 300 µl adjustable multichannel micropipette with disposable tips
- Multichannel micropipette reservoir
- Beakers, flasks, cylinders necessary for preparation of reagents
- Device for delivery of wash solution (multichannel wash bottle or automatic wash system)
- Microwell strip reader capable of reading at 450 nm (620 nm as optional reference wave length)
- Glass-distilled or deionized water
- Statistical calculator with program to perform regression analysis

8 PRECAUTIONS FOR USE

- All chemicals should be considered as potentially hazardous. We therefore recommend that this product is handled only by those persons who have been trained in laboratory techniques and that it is used in accordance with the principles of good laboratory practice. Wear suitable protective clothing such as laboratory overalls, safety glasses and gloves. Care should be taken to avoid contact with skin or eyes. In the case of contact with skin or eyes wash immediately with water. See material safety data sheet(s) and/or safety statement(s) for specific advice.
- Reagents are intended for research use only and are not for use in diagnostic or therapeutic procedures.
- Do not mix or substitute reagents with those from other lots or other sources.
- Do not use kit reagents beyond expiration date on label.
- Do not expose kit reagents to strong light during storage or incubation.
- Do not pipette by mouth.
- Do not eat or smoke in areas where kit reagents or samples are handled.
- Avoid contact of skin or mucous membranes with kit reagents or specimens.
- Rubber or disposable latex gloves should be worn while handling kit reagents or specimens.
- Avoid contact of substrate solution with oxidizing agents and metal.
- Avoid splashing or generation of aerosols.
- In order to avoid microbial contamination or cross-contamination of reagents or specimens which may invalidate the test use disposable pipette tips and/or pipettes.
- Use clean, dedicated reagent trays for dispensing the conjugate and substrate reagent.
- Exposure to acid inactivates the conjugate.
- Glass-distilled water or deionized water must be used for reagent preparation.

- Substrate solution must be at room temperature prior to use.
- Decontaminate and dispose specimens and all potentially contaminated materials as they could contain infectious agents. The preferred method of decontamination is autoclaving for a minimum of 1 hour at 121.5°C.
- Liquid wastes not containing acid and neutralized waste may be mixed with sodium hypochlorite in volumes such that the final mixture contains 1.0% sodium hypochlorite. Allow 30 minutes for effective decontamination. Liquid waste containing acid must be neutralized prior to the addition of sodium hypochlorite.

9 PREPARATION OF REAGENTS

Buffer Concentrates should be brought to room temperature and should be diluted before starting the test procedure. If crystals have formed in the **Buffer Concentrates**, warm them gently until they have completely dissolved.

9.1 Wash Buffer (1x)

Pour entire contents (50 ml) of the **Wash Buffer Concentrate** (20x) into a clean 1000 ml graduated cylinder. Bring to final volume of 1000 ml with glass-distilled or deionized water. Mix gently to avoid foaming. The pH of the final solution should adjust to 7.4. Transfer to a clean wash bottle and store at 2° to 25°C. Please note that Wash Buffer (1x) is stable for 30 days.

Wash Buffer (1x) may also be prepared as needed according to the following table:

Number of Strips	Wash Buffer Concentrate (20x) (ml)	Distilled Water (ml)
1 - 6	25	475
1 - 12	50	950

9.2 Assay Buffer (1x)

Pour the entire contents (5 ml) of the **Assay Buffer Concentrate** (20x) into a clean 100 ml graduated cylinder. Bring to final volume of 100 ml with distilled water. Mix gently to avoid foaming.

Store at 2° to 8°C. Please note that the Assay Buffer (1x) is stable for 30 days.

Assay Buffer (1x) may also be prepared as needed according to the following table:

Number of Strips	Assay Buffer Concentrate (20x) (ml)	Distilled Water (ml)
1 - 6	2.5	47.5
1 - 12	5.0	95.0

9.3 HRP-Conjugate

Please note that the HRP-Conjugate should be used within 30 minutes after dilution.

Dilute the **HRP-Conjugate** 1:25 just prior to use by adding 120 µl Assay Buffer (1x) to the tube containing the HRP-Conjugate concentrate. Mix the contents of the tube well.

Make a further 1:100 dilution with Assay Buffer (1x) in a clean plastic tube.

The second dilution (1:100) of the HRP-Conjugate may be prepared as needed according to the following table:

Number of Strips	Prediluted (1:25) HRP-Conjugate (ml)	Assay Buffer (1x) (ml)
1 - 6	0.03	2.97
1 - 12	0.06	5.94

9.4 Human sPECAM-1 Standard

Standard dilutions can be prepared directly on the microwell plate (see 10.c) or alternatively in tubes (see 9.4.1).

9.4.1 External Standard Dilution

Label 7 tubes, one for each standard point.

S1, S2, S3, S4, S5, S6, S7

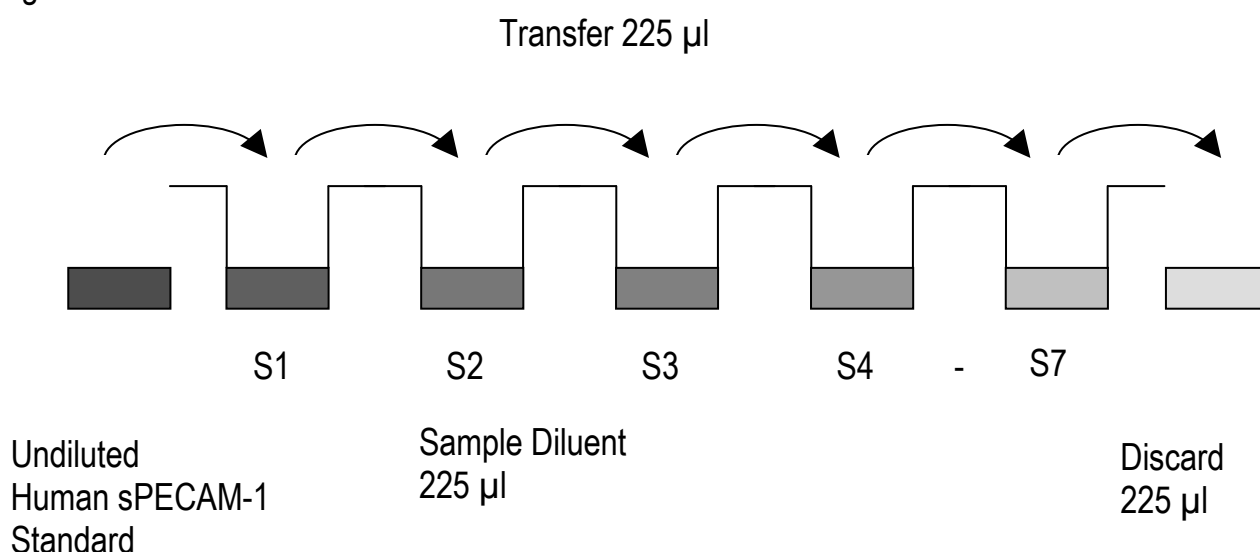
Then prepare 1:2 serial dilutions for the standard curve as follows:

Pipette 225 µl of Sample Diluent into each tube.

Pipette 225 µl of undiluted standard (concentration = 60 ng/ml) into the first tube, labelled S1, and mix (concentration of standard 1 = 30 ng/ml). Pipette 225 µl of this dilution into the second tube, labelled S2, and mix thoroughly before the next transfer. Repeat serial dilutions 5 more times thus creating the points of the standard curve (see Figure 5).

Sample Diluent serves as blank.

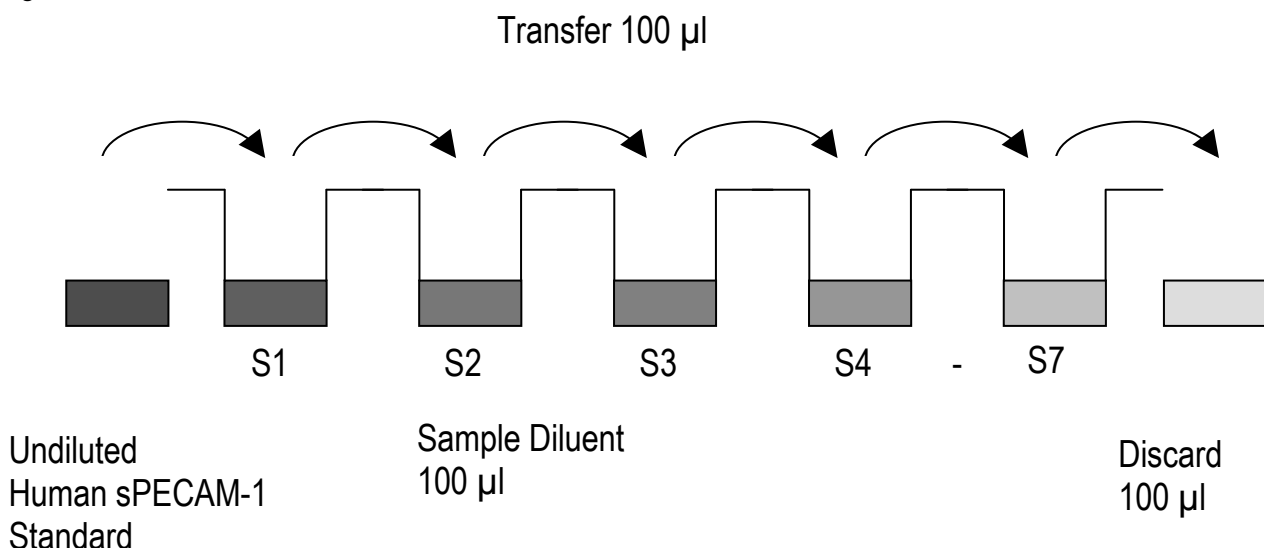
Figure 5



10 TEST PROTOCOL

- Determine the number of microwell strips required to test the desired number of samples plus appropriate number of wells needed for running blanks and standards. Each sample, standard, blank and optional control sample should be assayed in duplicate. Remove extra microwell strips from holder and store in foil bag with the desiccant provided at 2°-8°C sealed tightly.
- Wash the microwell strips twice with approximately 400 µl **Wash Buffer** per well with thorough aspiration of microwell contents between washes. Allow the Wash Buffer to sit in the wells for about **10 – 15 seconds** before aspiration. Take care not to scratch the surface of the microwells. After the last wash step, empty wells and tap microwell strips on absorbent pad or paper towel to remove excess Wash Buffer. Use the microwell strips immediately after washing. Alternatively microwell strips can be placed upside down on a wet absorbent paper for not longer than 15 minutes. **Do not allow wells to dry.**
- Standard dilution on the microwell plate** (Alternatively the standard dilution can be prepared in tubes - see 9.4.1): Add 100 µl of Sample Diluent in duplicate to all **standard wells**. Pipette 100 µl of undiluted **standard** (concentration = 60 ng/ml) in duplicate into well A1 and A2 (see Table 1). Mix the contents of wells A1 and A2 by repeated aspiration and ejection (concentration of standard 1, S1 = 30 ng/ml), and transfer 100 µl to wells B1 and B2, respectively (see Figure 6). Take care not to scratch the inner surface of the microwells. Continue this procedure 5 times, creating two rows of human sPECAM-1 standard dilutions ranging from 30.00 to 0.47 ng/ml. Discard 100 µl of the contents from the last microwells (G1, G2) used.

Figure 6



In case of an **external standard dilution** (see 9.4.1), pipette 100 µl of these standard dilutions (S1 - S7) in the standard wells according to Table 1.

Table 1

Table depicting an example of the arrangement of blanks, standards and samples in the microwell strips:

	1	2	3	4
A	Standard 1 (30.00 ng/ml)	Standard 1 (30.00 ng/ml)	Sample 1	Sample 1
B	Standard 2 (15.00 ng/ml)	Standard 2 (15.00 ng/ml)	Sample 2	Sample 2
C	Standard 3 (7.50 ng/ml)	Standard 3 (7.50 ng/ml)	Sample 3	Sample 3
D	Standard 4 (3.75 ng/ml)	Standard 4 (3.75 ng/ml)	Sample 4	Sample 4
E	Standard 5 (1.88 ng/ml)	Standard 5 (1.88 ng/ml)	Sample 5	Sample 5
F	Standard 6 (0.94 ng/ml)	Standard 6 (0.94 ng/ml)	Sample 6	Sample 6
G	Standard 7 (0.47 ng/ml)	Standard 7 (0.47 ng/ml)	Sample 7	Sample 7
H	Blank	Blank	Sample 8	Sample 8

- d. Add 100 µl of **Sample Diluent** in duplicate to the **blank wells**.
- e. Add 90 µl of **Sample Diluent** to the **sample wells**.
- f. Add 10 µl of each **sample** in duplicate to the **sample wells**.
- g. Prepare **HRP-Conjugate** (see Preparation of HRP-Conjugate 9.3).
- h. Add 50 µl of **HRP-Conjugate** to all wells.
- i. Cover with an adhesive film and incubate at room temperature (18 to 25°C) for 3 hours, if available on a microplate shaker set at 400 rpm.
- j. Remove adhesive film and empty wells. **Wash** microwell strips 3 times according to point b. of the test protocol. Proceed immediately to the next step.
- k. Pipette 100 µl of **TMB Substrate Solution** to all wells.
- l. Incubate the microwell strips at room temperature (18° to 25°C) for about 10 min. Avoid direct exposure to intense light.

The colour development on the plate should be monitored and the substrate reaction stopped (see next point of this protocol) before positive wells are no longer properly recordable. Determination of the ideal time period for colour development has to be done individually for each assay.

It is recommended to add the stop solution when the highest standard has developed a dark blue colour. Alternatively the colour development can be monitored by the ELISA reader at 620 nm. The substrate reaction should be stopped as soon as Standard 1 has reached an OD of 0.90 – 0.95.

- m. Stop the enzyme reaction by quickly pipetting 100 µl of **Stop Solution** into each well. It is important that the Stop Solution is spread quickly and uniformly throughout the microwells to completely inactivate the enzyme. Results must be read immediately after the Stop Solution is added or within one hour if the microwell strips are stored at 2 - 8°C in the dark.

- n. Read absorbance of each microwell on a spectro-photometer using 450 nm as the primary wave length (optionally 620 nm as the reference wave length; 610 nm to 650 nm is acceptable). Blank the plate reader according to the manufacturer's instructions by using the blank wells. Determine the absorbance of both the samples and the standards.

Note: In case of incubation without shaking the obtained O.D. values may be lower than indicated below. Nevertheless the results are still valid.

11 CALCULATION OF RESULTS

- Calculate the average absorbance values for each set of duplicate standards and samples. Duplicates should be within 20 per cent of the mean value.
- Create a standard curve by plotting the mean absorbance for each standard concentration on the ordinate against the human sPECAM-1 concentration on the abscissa. Draw a best fit curve through the points of the graph (a 5-parameter curve fit is recommended).
- To determine the concentration of circulating human sPECAM-1 for each sample, first find the mean absorbance value on the ordinate and extend a horizontal line to the standard curve. At the point of intersection, extend a vertical line to the abscissa and read the corresponding human sPECAM-1 concentration.
- **If instructions in this protocol have been followed samples have been diluted 1:10 (10 µl sample + 90 µl Sample Diluent), the concentration read from the standard curve must be multiplied by the dilution factor (x 10).**
- **Calculation of samples with a concentration exceeding standard 1 will result in incorrect, low human sPECAM-1 levels (Hook Effect). Such samples require further external predilution according to expected human sPECAM-1 values with Sample Diluent in order to precisely quantitate the actual human sPECAM-1 level.**
- It is suggested that each testing facility establishes a control sample of known human sPECAM-1 concentration and runs this additional control with each assay. If the values obtained are not within the expected range of the control, the assay results may be invalid.
- A representative standard curve is shown in Figure 7. This curve cannot be used to derive test results. Each laboratory must prepare a standard curve for each group of microwell strips assayed.

Figure 7

Representative standard curve for human sPECAM-1 ELISA. Human sPECAM-1 was diluted in serial 2-fold steps in Sample Diluent. Do not use this standard curve to derive test results. A standard curve must be run for each group of microwell strips assayed.

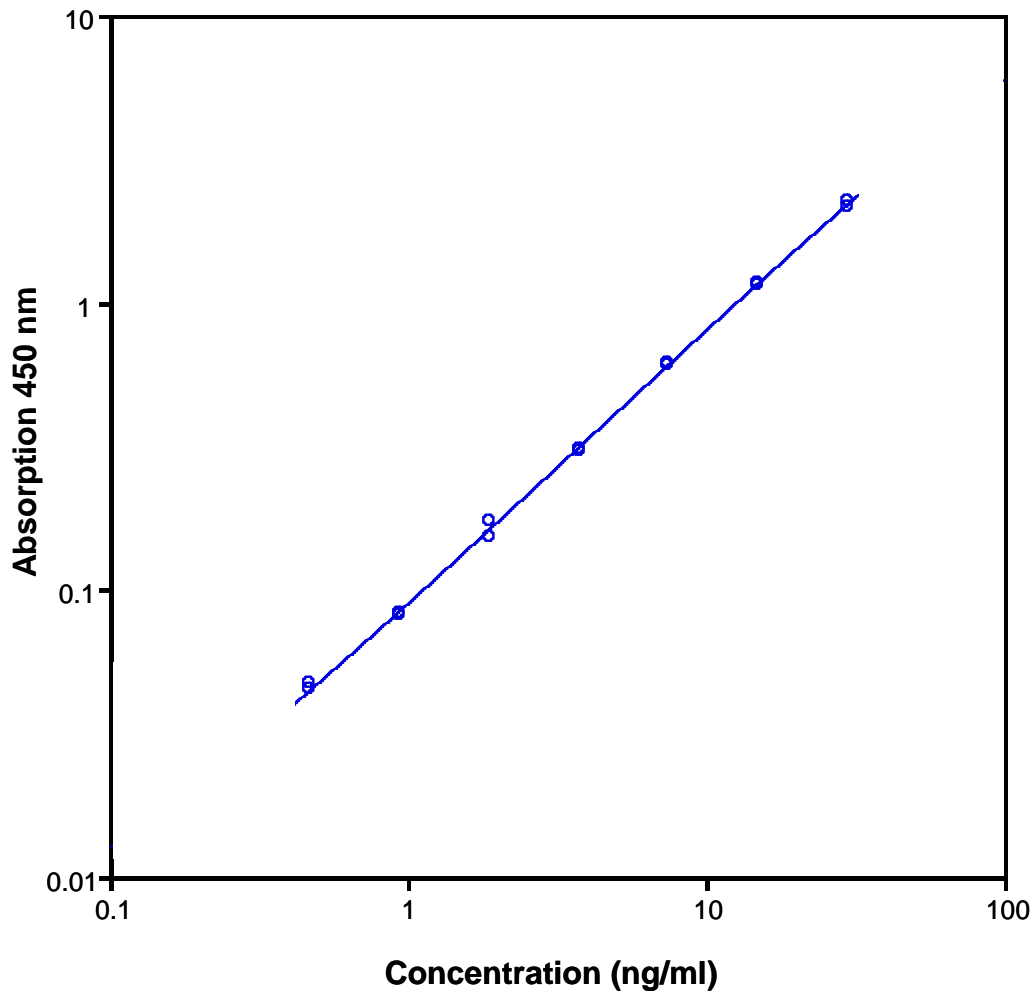


Table 2

Typical data using the human sPECAM-1 ELISA

Measuring wavelength: 450 nm

Reference wavelength: 620 nm

Standard	Human sPECAM-1 Concentration (ng/ml)	O.D. at 450 nm	Mean O.D. at 450 nm	C.V. (%)
1	30.00	2.144	2.193	3.1
	30.00	2.240		
2	15.00	1.156	1.159	0.5
	15.00	1.162		
3	7.50	0.607	0.613	1.2
	7.50	0.617		
4	3.75	0.302	0.306	1.4
	3.75	0.308		
5	1.88	0.174	0.164	9.5
	1.88	0.152		
6	0.94	0.083	0.083	0.9
	0.94	0.082		
7	0.47	0.047	0.046	3.1
	0.47	0.045		
Blank	0	0.005	0.006	
	0	0.006		

The OD values of the standard curve may vary according to the conditions of assay performance (e.g. operator, pipetting technique, washing technique or temperature effects). Furthermore shelf life of the kit may affect enzymatic activity and thus colour intensity. Values measured are still valid.

12 LIMITATIONS

- Since exact conditions may vary from assay to assay, a standard curve must be established for every run.
- Bacterial or fungal contamination of either screen samples or reagents or cross-contamination between reagents may cause erroneous results.
- Disposable pipette tips, flasks or glassware are preferred, reusable glassware must be washed and thoroughly rinsed of all detergents before use.
- Improper or insufficient washing at any stage of the procedure will result in either false positive or false negative results. Empty wells completely before dispensing fresh wash solution, fill with Wash Buffer as indicated for each wash cycle and do not allow wells to sit uncovered or dry for extended periods.
- The use of radioimmunotherapy has significantly increased the number of patients with human anti-mouse IgG antibodies (HAMA). HAMA may interfere with assays utilizing murine monoclonal antibodies leading to both false positive and false negative results. Serum samples containing antibodies to murine immunoglobulins can still be analysed in such assays when murine immunoglobulins (serum, ascitic fluid, or monoclonal antibodies of irrelevant specificity) are added to the sample.

13 PERFORMANCE CHARACTERISTICS

13.1 Sensitivity

The limit of detection of human sPECAM-1 defined as the analyte concentration resulting in an absorbance significantly higher than that of the dilution medium (mean plus 2 standard deviations) was determined to be 0.06 ng/ml (mean of 6 independent assays).

13.2 Reproducibility

13.2.1 Intra-assay

Reproducibility within the assay was evaluated in 3 independent experiments. Each assay was carried out with 6 replicates of 8 serum samples containing different concentrations of human sPECAM-1. 2 standard curves were run on each plate. Data below show the mean human sPECAM-1 concentration and the coefficient of variation for each sample (see Table 3). The calculated overall intra-assay coefficient of variation was 1.7%.

Table 3

The mean human sPECAM-1 concentration and the coefficient of variation for each sample

Sample	Experiment	Mean Human sPECAM-1 Concentration (ng/ml)	Coefficient of Variation (%)
1	1	91.6	1.3
	2	97.8	1.6
	3	86.3	2.2
2	1	90.9	1.4
	2	103.2	0.6
	3	96.5	3.5
3	1	102.6	0.6
	2	115.9	0.9
	3	98.1	4.2
4	1	107.3	2.0
	2	109.3	0.8
	3	92.1	2.6
5	1	88.0	0.5
	2	100.8	1.1
	3	88.6	0.6
6	1	96.5	0.6
	2	110.7	1.5
	3	100.7	1.5
7	1	59.0	2.7
	2	67.9	1.8
	3	55.4	2.5
8	1	76.2	2.2
	2	80.7	2.9
	3	75.6	1.4

13.2.2 Inter-assay

Assay to assay reproducibility within one laboratory was evaluated in 3 independent experiments. Each assay was carried out with 6 replicates of 8 serum samples containing different concentrations of human sPECAM-1. 2 standard curves were run on each plate. Data below show the mean human sPECAM-1 concentration and the coefficient of variation calculated on 18 determinations of each sample (see Table 4). The calculated overall inter-assay coefficient of variation was 7.4%.

Table 4

The mean human sPECAM-1 concentration and the coefficient of variation of each sample

Sample	Mean Human sPECAM-1 Concentration (ng/ml)	Coefficient of Variation (%)
1	91.9	6.3
2	96.8	6.3
3	105.5	8.8
4	102.9	9.1
5	92.4	7.8
6	102.6	7.1
7	60.7	10.5
8	77.5	3.5

13.3 Spiking Recovery

The spiking recovery was evaluated by spiking 4 levels of human sPECAM-1 into pooled normal human serum samples. Recoveries were determined in 3 independent experiments with 4 replicates each. The amount of endogenous human sPECAM-1 in unspiked serum was subtracted from the spike values. The recovery ranged from 100% to 119% with an overall mean recovery of 108%.

13.4 Dilution Linearity

4 serum samples with different levels of human sPECAM-1 were analysed at serial 2 fold dilutions with 4 replicates each.

The recovery ranged from 79% to 109% with an overall recovery of 91% (see

Table 5).

Table 5

Sample	Dilution	Expected Human sPECAM-1 Concentration (ng/ml)	Observed Human sPECAM-1 Concentration (ng/ml)	Recovery of Expected Human sPECAM-1 Concentration (%)
1	1:10	-	97.9	-
	1:20	49.0	41.7	85.2
	1:40	24.5	19.4	79.1
	1:80	12.2	10.9	89.3
2	1:10	-	92.2	-
	1:20	48.1	45.6	94.7
	1:40	24.1	21.2	88.0
	1:80	12.0	13.1	109.0
3	1:10	-	107.2	-
	1:20	53.6	49.0	91.4
	1:40	26.8	22.8	85.1
	1:80	13.4	10.9	81.2
4	1:10	-	104.7	-
	1:20	52.3	50.4	96.2
	1:40	26.2	24.6	94.0
	1:80	13.1	13.6	104.0

13.5 Sample Stability

13.5.1 Freeze-Thaw Stability

Aliquots of serum samples (spiked or unspiked) were stored at -20°C and thawed 5 times, and the human sPECAM-1 levels determined. There was no significant loss of human sPECAM-1 immunoreactivity detected by freezing and thawing.

13.5.2 Storage Stability

Aliquots of serum samples (spiked or unspiked) were stored at -20°C, 2-8°C, room temperature (RT) and at 37°C, and the human sPECAM-1 level determined after 24 h. There was no significant loss of human sPECAM-1 immunoreactivity detected during storage

under above conditions.

13.6 Comparison of Serum and Plasma

From 22 individuals, serum as well as EDTA, citrate and heparin plasma obtained at the same time point, was evaluated. All these blood preparations are suitable for human sPECAM-1 determinations. It is nevertheless highly recommended to assure the uniformity of blood preparations.

13.7 Specificity

The interference of circulating factors of the immune system was evaluated by spiking these proteins at physiologically relevant concentrations into a human sPECAM-1 positive serum. There was no crossreactivity detected.

13.8 Expected Values

A panel of 40 serum samples from randomly selected apparently healthy donors (males and females) was tested for human sPECAM-1.

The detected human sPECAM-1 levels ranged between 42.8 and 91.0 ng/ml with a mean level of 62.3 ng/ml and a standard deviation of 12.2 ng/ml.

14 REAGENT PREPARATION SUMMARY

14.1 Wash Buffer (1x)

Add **Wash Buffer Concentrate** 20x (50 ml) to 950 ml distilled water.

Number of Strips	Wash Buffer Concentrate (ml)	Distilled Water (ml)
1 - 6	25	475
1 - 12	50	950

14.2 Assay Buffer (1x)

Add **Assay Buffer Concentrate** 20x (5 ml) to 95 ml distilled water.

Number of Strips	Assay Buffer Concentrate (ml)	Distilled Water (ml)
1 - 6	2.5	47.5
1 - 12	5.0	95.0

14.3 HRP-Conjugate

1:25 predilution: Add 120 µl Assay Buffer (1x) to the tube containing the **HRP-Conjugate** concentrate.

Make a further 1:100 dilution in Assay Buffer (1x):

Number of Strips	Prediluted (1:25) HRP-Conjugate (ml)	Assay Buffer (1x) (ml)
------------------	--------------------------------------	------------------------

1 - 6	0.03	2.97
1 - 12	0.06	5.94

15 TEST PROTOCOL SUMMARY

1. Determine the number of microwell strips required.
2. Wash microwell strips twice with Wash Buffer.
3. Standard dilution on the microwell plate: Add 100 µl Sample Diluent, in duplicate, to all standard wells. Pipette 100 µl prepared standard into the first wells and create standard dilutions by transferring 100 µl from well to well. Discard 100 µl from the last wells. Alternatively external standard dilution in tubes (see 9.4.1): Pipette 100 µl of these standard dilutions in the microwell strips.
4. Add 100 µl Sample Diluent, in duplicate, to the blank wells.
5. Add 90 µl Sample Diluent to sample wells.
6. Add 10 µl sample in duplicate, to designated sample wells.
7. Prepare HRP-Conjugate.
8. Add 50 µl HRP-Conjugate to all wells.
9. Cover microwell strips and incubate 3 hours at room temperature (18° to 25°C).
10. Empty and wash microwell strips 3 times with Wash Buffer.
11. Add 100 µl of TMB Substrate Solution to all wells.
12. Incubate the microwell strips for about 10 minutes at room temperature (18° to 25°C).
13. Add 100 µl Stop Solution to all wells.
14. Blank microwell reader and measure colour intensity at 450 nm.

Note: If instructions in this protocol have been followed samples have been diluted 1:10 (10 µl sample + 90 µl Sample Diluent), the concentration read from the standard curve must be multiplied by the dilution factor (x 10).

