

ENERGY METABOLISM AND BODY WEIGHT REGULATION

Immunoassays



HUMAN OMENTIN-1 ELISA

Cat. No.: RD191100200R

RUO

Intended use

The RD191100200R Human Omentin-1 ELISA is a sandwich enzyme immunoassay for the quantitative measurement of human omentin-1.

- It is intended for research use only
- The total assay time is less than 3.5 hours
- The kit measures omentin-1 in serum and plasma (EDTA, citrate, heparin)
- Assay format is 96 wells
- Quality Controls are human serum based
- Standard is recombinant protein based
- Components of the kit are provided ready to use, concentrated or lyophilized

Clinical application

- Energy metabolism and body weight regulation
- Diabetology - Autoimmunity
- Reproduction

Immunoassays



Test principle

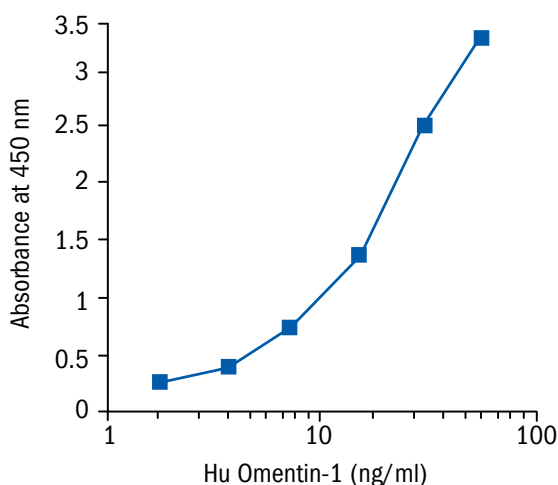
In the BioVendor Human Omentin-1 ELISA, standards, quality controls and samples are incubated at 37°C in microplate wells pre-coated with polyclonal anti-human omentin-1 antibody. After 120 minutes incubation and washing, biotin labelled polyclonal anti-human omentin-1 antibody is added and incubated at 37°C with captured omentin-1 for 30 minutes. After another washing, streptavidin-HRP conjugate is added. After 30 minutes incubation at 37°C and the last

washing step, the remaining conjugate is allowed to react with the substrate solution (TMB). The reaction is stopped by addition of acidic solution and absorbance of the resulting yellow product is measured. The absorbance is proportional to the concentration of omentin-1. A standard curve is constructed by plotting absorbance values against concentrations of standards, and concentrations of unknown samples are determined using this standard curve.

HUMAN OMENTIN-1 ELISA

CAT. NO.: RD191100200R

Assay format	Sandwich ELISA, Biotin-labelled antibody, 96 wells/kit
Samples	Serum, Plasma (EDTA, citrate, heparin)
Controls	QC-Low, QC-High
Standards	2 to 64 ng/ml
Limit of detection	0.5 ng/ml
Cross-reactivity	Monkey



Summary of protocol

- Reconstitute QCs and Master Standard and prepare set of standards
- Dilute samples 40×
- Add 100 µl Standards, QCs and samples
- Incubate at 37°C for 2 hours
- Wash plate 3 times
- Add 100 µl Biotin Labelled Antibody
- Incubate at 37°C for 30 min
- Wash plate 3 times
- Add 100 µl Streptavidin-HRP Conjugate
- Incubate at 37°C for 30 min
- Wash plate 3 times
- Add 100 µl Substrate Solution
- Incubate at RT for 10 min
- Add 100 µl Stop Solution
- Read absorbance and calculate results

Related products

- Omentin Human E. coli RD172100100

Date of issue October 2013



BioVendor – Laboratorni medicina a.s.

Karasek 1767/1, 621 00 Brno, Czech Republic

Phone: +420 549 124 185, Fax: +420 549 211 460

E-mail: info@biovendor.com

› www.biovendor.com

› Visit www.biovendor.com to find more information about BioVendor products.