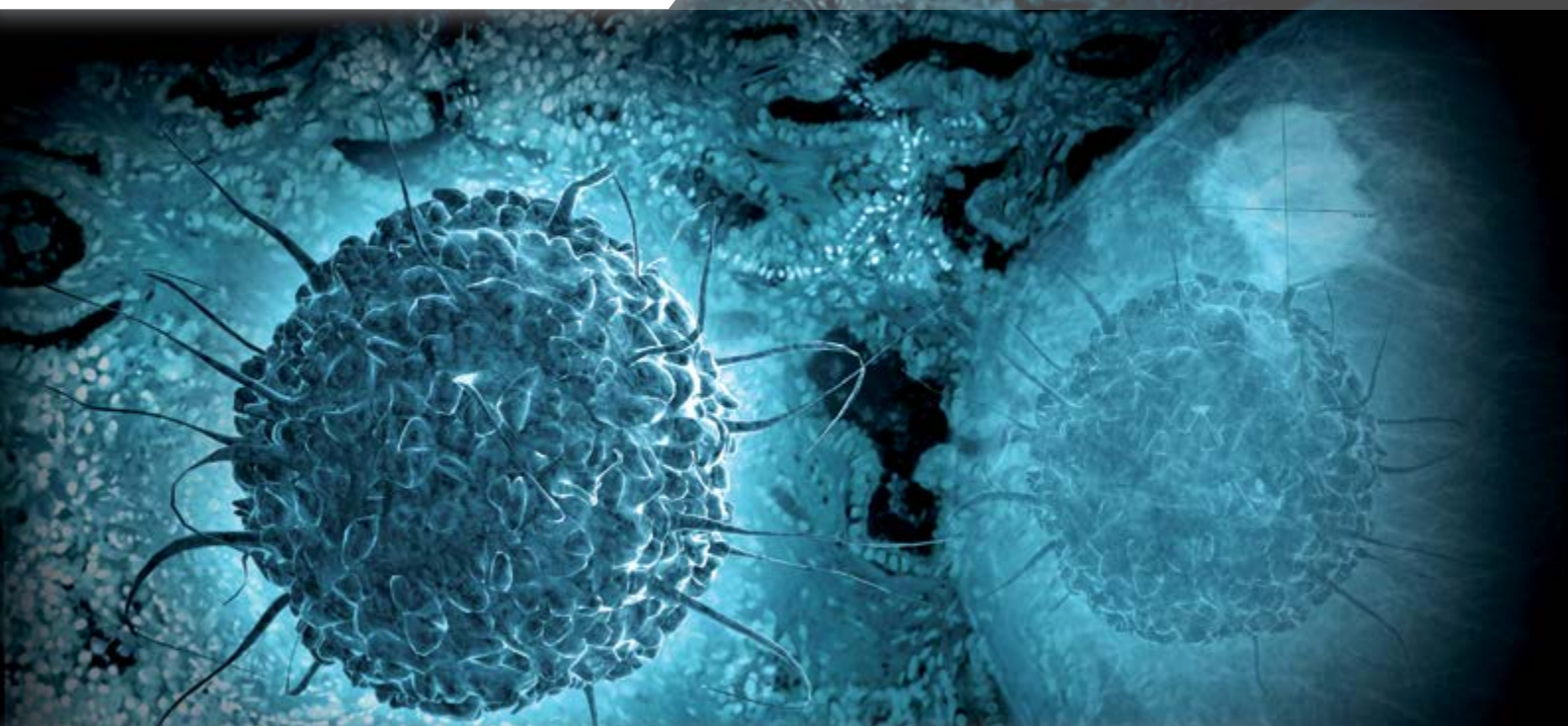


ONCOLOGY

Immunoassays



HUMAN MIDKINE ELISA

Cat. No.: RD191042200R

RUO

Intended use

The RD191042200R Human Midkine ELISA is a sandwich enzyme immunoassay for the quantitative measurement of human midkine in serum, plasma (citrate, heparin).

- The total assay time is less than 5 hours
- The kit measures midkine in serum, plasma (citrate, heparin)
- Assay format is 96 wells
- Quality Control and Master Standard are human serum based
- Standard is recombinant protein based
- Standard Diluent contains animal serum
- Components of the kit are provided ready to use, concentrated or lyophilized

Clinical application

- Oncology
- Inflammatory diseases
- Preservation and repair of injured tissues

Immunoassays

Test principle

In the BioVendor Human Midkine ELISA, standards, quality controls and samples are incubated in microplate wells pre-coated with polyclonal anti-human midkine antibody. After 120 minutes incubation at 37°C and washing, biotin labelled polyclonal anti-human midkine antibody is added and incubated with captured midkine for 60 minutes. After another washing, streptavidin-HRP conjugate is added. After 30 minutes incubation and the last washing step, the remaining HRP

conjugate is allowed to react with the substrate solution (TMB). The reaction is stopped by addition of acidic solution and absorbance of the resulting yellow product is measured. The absorbance is proportional to the concentration of midkine. A standard curve is constructed by plotting absorbance values against concentrations of standards, and concentrations of unknown samples are determined using this standard curve.

HUMAN MIDKINE ELISA

Cat.No.: RD191042200R

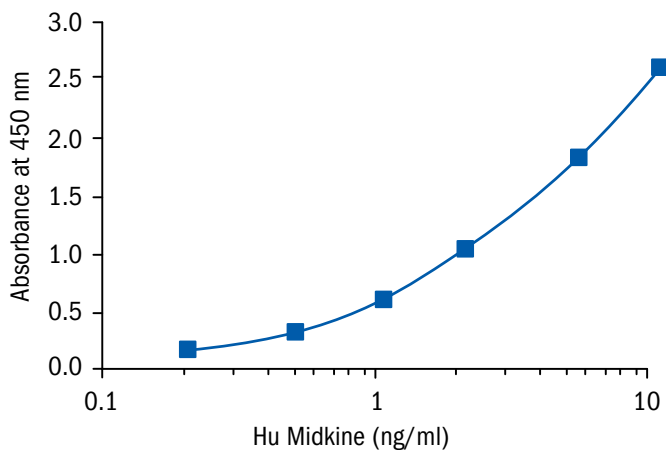
Assay format	Sandwich ELISA, Biotin-labelled antibody, 96 wells/kit
Samples	Serum, Plasma (citrate, heparin)
Controls	Quality Control
Standards	0.2 – 10 ng/ml
Limit of detection	Analytical Limit of Detection is calculated from the real Midkine values in wells and is 0.033 ng/ml
Cross-reactivity	Dog

Summary of protocol

- Reconstitute QCs and Master Standard and prepare set of Standards
- Dilute Standards, QC and samples 5×
- Add 100 µl Standards, QCs and samples
- Incubate at 37°C for 2 hours/no shaking
- Wash plate 3 times
- Add 100 µl Biotin Labelled Antibody
- Incubate at RT for 1 hour/300 rpm
- Wash plate 5 times
- Add 100 µl Streptavidin-HRP Conjugate
- Incubate at RT for 30 min/300 rpm
- Wash plate 5 times
- Add 100 µl Substrate Solution
- Incubate at RT for 10 min
- Add 100 µl Stop Solution
- Read absorbance and calculate results

Related products

- Midkine Human E. coli RD172042100
- Midkine Human, Rabbit Polyclonal Antibody RD181042050



Date of issue September 2013



BioVendor – Laboratorní medicína a.s.

Karasek 1767/1, 621 00 Brno, Czech Republic

Phone: +420 549 124 185, Fax: +420 549 211 460

E-mail: info@biovendor.com

› www.biovendor.com

› Visit www.biovendor.com to find more information about BioVendor products.