

ENERGY METABOLISM AND BODY WEIGHT REGULATION

Immunoassays



HUMAN ADIPONECTIN ELISA, HIGH SENSITIVITY

Cat. No.: RD191023100

IVD CE

Intended use

The RD191023100 Human Adiponectin ELISA, High Sensitivity is a sandwich enzyme immunoassay for the quantitative measurement of human adiponectin in serum, plasma, breast milk, urine, cerebrospinal fluid and tissue culture media.

- The total assay time is less than 3 hours
- The kit measures total adiponectin in serum, plasma (EDTA, citrate, heparin), urine and cerebrospinal fluid (CSF)
- Assay format is 96 wells
- Quality Controls are human serum based. No animal sera are used
- Standards are human serum based
- Components of the kit are provided ready to use or concentrated

Clinical application

- Energy metabolism and body weight regulation
- Metabolic syndrome
- Type 2 diabetes
- Coronary artery disease
- Atherosclerosis



Test principle

In the BioVendor Human Adiponectin ELISA, standards, quality controls and samples are incubated in microplate wells pre-coated with polyclonal anti-human adiponectin antibody. After 60 minutes incubation and washing, polyclonal anti-human adiponectin antibody, conjugated with horseradish peroxidase (HRP) is added to the wells and incubated for 60 minutes with captured adiponectin. Following another washing step, the remaining HRP conjugate is allowed to react

with the substrate solution (TMB). The reaction is stopped by addition of acidic solution and absorbance of the resulting yellow product is measured. The absorbance is proportional to the concentration of adiponectin. A standard curve is constructed by plotting absorbance values against concentrations of standards, and concentrations of unknown samples are determined using this standard curve.

HUMAN ADIPONECTIN ELISA, HIGH SENSITIVITY

Cat.No.: RD191023100

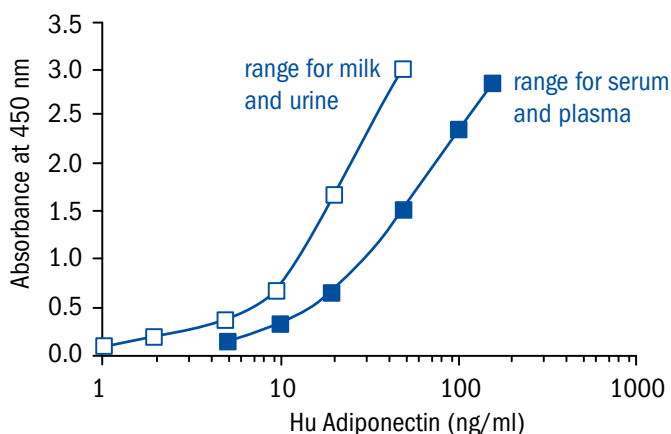
Assay format	Sandwich ELISA, HRP-labelled antibody, 96 wells/kit
Samples	Serum, Plasma (EDTA, citrate, heparin), Urine, Cerebrospinal fluid (CSF)
Controls	QC-Low, QC-High
Standards	1 to 150 ng/ml
Limit of detection	For serum or plasma samples: 0.47 ng/ml For milk, CSF or urine: 0.156 ng/ml
Cross-reactivity	Cat, Dog, Hamster, Monkey, Rat

Summary of protocol

- Dilute samples and QCs 300×
- Add 100 µl Standards, QCs and samples
- Incubate at RT for 1 hour/300 rpm
- Wash plate 3 times
- Add 100 µl Conjugate Solution
- Incubate at RT for 1 hour/300 rpm
- Wash plate 3 times
- Add 100 µl Substrate Solution
- Incubate at RT for 10 min
- Add 100 µl Stop Solution
- Read absorbance and calculate results

Related products

- Human Adiponectin ELISA RD195023100
- Adiponectin Globular Human *E. coli* RD172112100
- Adiponectin Human *E. coli* RD172029100
- Adiponectin Human HEK293 RD172023010
- Adiponectin Human, Trimeric form (HEK) RD172091100
- Adiponectin MMW and HMW oligomer-rich Human HEK, Tagless RD172023100-C
- Adiponectin LMW and MMW oligomer-rich Human HEK, Tagless RD172023100-B
- Adiponectin Human (HEK), Rabbit Polyclonal Antibody RD181023100
- Adiponectin Human, Rabbit Polyclonal Antibody RD181023220
- Adiponectin Human (HEK), Goat Polyclonal Antibody RD184023100
- Adiponectin Human, Sheep Polyclonal Antibody RD184023100-01



Date of issue November 2013



BioVendor – Laboratorní medicína a.s.

Karasek 1767/1, 621 00 Brno, Czech Republic

Phone: +420 549 124 185, Fax: +420 549 211 460

E-mail: info@biovendor.com

› www.biovendor.com

› Visit www.biovendor.com to find more information about BioVendor products.