

ENERGY METABOLISM AND BODY WEIGHT REGULATION

Immunoassays



HUMAN ADIPONECTIN ELISA

Cat. No.: RD195023100

IVD CE

Intended use

The RD195023100 Human Adiponectin ELISA is a competitive enzyme immunoassay for the quantitative measurement of human adiponectin in serum and plasma.

- The total assay time is less than 3 hours
- The kit measures total adiponectin in serum and plasma (EDTA, citrate, heparin)
- Assay format is 96 wells
- Quality Controls are human serum based. No animal sera are used
- Standards are human serum based
- Components of the kit are provided ready to use or concentrated

Clinical application

- Energy metabolism and body weight regulation
- Metabolic syndrome
- Type 2 diabetes
- Coronary artery disease
- Atherosclerosis



Test principle

In the BioVendor Human Adiponectin ELISA, standards, quality controls and samples are incubated in microplate wells pre-coated with recombinant human adiponectin together with polyclonal anti-human adiponectin antibody conjugated to horseradish peroxidase (HRP). After washing step, the HRP conjugate bound to the adiponectin immobilized on the wells is allowed to react with the substrate solution

(TMB). The reaction is stopped by addition of acidic solution and absorbance of the resulting yellow product is measured. The absorbance is inversely proportional to the adiponectin concentration. A standard curve is constructed by plotting absorbance values against adiponectin of standards, and concentrations of unknown samples are determined using this standard curve.

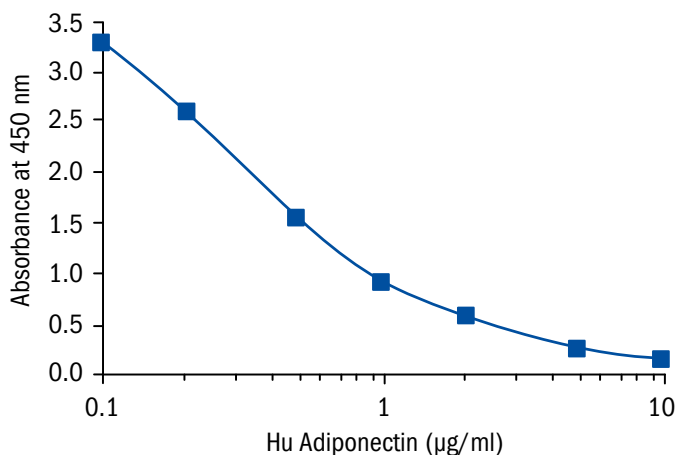
HUMAN ADIPONECTIN ELISA

Cat.No.: RD195023100

Assay format	Competitive ELISA, Immobilized antigen 96 wells/kit
Samples	Serum, Plasma (EDTA, citrate, heparin)
Controls	QC-Low, QC-High
Standards	0.1 to 10 µg/ml
Limit of detection	26 ng/ml
Cross-reactivity	Monkey

Summary of protocol

- Dilute Standards 3×
- Dilute samples 30×
- Add 50 µl Standards, QCs and samples
- Add 50 µl Conjugate Solution
- Incubate at RT for 2 hour/300 rpm
- Wash plate 3 times
- Add 200 µl Substrate Solution
- Incubate at RT for 10-15 min
- Add 50 µl Stop Solution
- Read absorbance and calculate results



Related products

- Human Adiponectin ELISA, High Sensitivity RD191023100
- Adiponectin Globular Human E. coli RD172112100
- Adiponectin Human E. coli RD172029100
- Adiponectin Human HEK293 RD172023010
- Adiponectin Human, Trimeric form (HEK) RD172091100
- Adiponectin MMW and HMW oligomer-rich Human HEK, Tagless RD172023100-C
- Adiponectin LMW and MMW oligomer-rich Human HEK, Tagless RD172023100-B
- Adiponectin Human (HEK), Rabbit Polyclonal Antibody RD181023100
- Adiponectin Human, Rabbit Polyclonal Antibody RD181023220
- Adiponectin Human (HEK), Goat Polyclonal Antibody RD184023100
- Adiponectin Human, Sheep Polyclonal Antibody RD184023100-01

Date of issue November 2013