

CTRP1 Human E. coli

Product Data Sheet

Type: Recombinant

Source: E. coli

Species: Human

Other names: CTRP1

Cat. No.:

RD172153100

(0.1 mg)

Description

Total 266 AA. MW: 30.45 kDa (calculated). UniProtKB acc.no. Q9BXJ1. N-terminal His-tag, 10extra AA (highlighted).

Research topic

Cytokines and chemokines and related molecules, Energy metabolism and body weight regulation

Amino Acid Sequence

MKHHHHHHAS RVPHVQGEQQ EWEGTEELPS PPDHAERAEE QHEKYRPSQD QGLPASRCLR CCDPGTSMYP ATAVPQINIT
ILKGEKGDRG DRGLQQKYGK TGSAGARGHT GPKGQKGSMD APGERCKSHY AAFSVGRKKP MHSNHYYQTV IFDTEFVNLY
DHFNMFTGKF YCYVPGLYFF SLNVHTWNQK ETYLHIMKNE EEVVILFAQV GDRSIMQSQS LMLELREQDQ VVWRLYKGER
ENAI FSEELD TYIT FSGYLV KHATEP

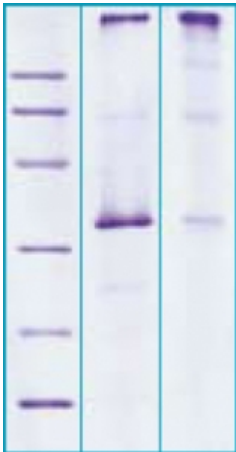
Source

E. coli

Purity

>95%

SDS-PAGE gel



12% SDS-PAGE separation of Human CTRP1

1. M.W. marker - 14, 21, 31, 45, 66, 97 kDa
2. reduced and heated sample, 5µg / lane
3. non-reduced and non-heated sample, 5µg / lane

Formulation

Filtered (0,4 µm) and lyophilized in 0.5 mg/mL in 0.05M Acetate buffer pH 4.0

Reconstitution

Add 0.1M Acetate buffer pH4 to prepare a working stock solution of approximately 0.5 mg/mL and let the lyophilized pellet dissolve completely. For conversion into higher pH value, we recommend intensive dilution by relevant buffer to a concentration of 10µg/mL. In higher concentrations the solubility of this antigen is limited. Filter sterilize your culture media/working solutions containing this non-sterile product before using in cell culture.

Shipping

At ambient temperature. Upon receipt, store the product at the temperature recommended below.

Storage, Stability/Shelf Life

Store lyophilized protein at -20°C. Lyophilized protein remains stable until the expiry date when stored at -20°C. Aliquot reconstituted protein to avoid repeated freezing/thawing cycles and store at -80°C for long term storage. Reconstituted protein can be stored at 4°C for a limited period of time; it does not show any change after one week at 4°C.

Quality Control Test

BCA to determine quantity of the protein.
SDS PAGE to determine purity of the protein.

Applications

ELISA, Western blotting

Note

This product is intended for research use only.

References to this Product

- Akiyama H, Otani M, Sato S, Toyosawa S, Furukawa S, Wakisaka S, Maeda T. *A novel adipokine C1q/TNF-related protein 1 (CTRP1) regulates chondrocyte proliferation and maturation through the ERK1/2 signaling pathway.* Mol Cell Endocrinol. 2013 Apr 30;369 (1-2):63-71

HEADQUARTERS: BioVendor Laboratorní medicina, a.s.	Karasek 1767/1	621 00 Brno CZECH REPUBLIC	Phone: +420-549-124-185 Fax: +420-549-211-460	E-mail: info@biovendor.com sales@biovendor.com Web: www.biovendor.com
AUSTRIA: BioVendor GesmbH	Nußdorfer Straße 20/10	1090 Vienna AUSTRIA	Phone: +43-1-89090-25 Fax: +43-1-89090-2515	E-mail: infoAustria@biovendor.com
GERMANY, SWITZERLAND: BioVendor GmbH	Otto-Hahn-Straße 16	34123 Kassel GERMANY	Phone: +49-6221-433-9100 Fax: +49-6221-433-9111	E-mail: infoEU@biovendor.com
USA, CANADA AND MEXICO: BioVendor LLC	128 Bingham Rd. Suite 1300	Asheville, NC 28806 USA	Phone: +1-828-575-9250 +1-800-404-7807 Fax: +1-828-575-9251	E-mail: infoUSA@biovendor.com