

Clusterin Human HEK293

Product Data Sheet

Type: Recombinant	Cat. No.:	
Source: HEK293	RD172034020	(0.02 mg)
Species: Human	RD172034100	(0.1 mg)
Other names: Apolipoprotein J, Apo J		

Description

Total 438 AA, M.w. 51.27kDa (calculated). The AA sequence (AA 1-427) is identical to Swiss-Prot-P10909 (AA 23-449, secreted Human Clusterin). C-terminal Flag-tag, 11 extra AA (highlighted).

Introduction to the Molecule

Clusterin is a 75-80 kD disulfide-linked heterodimeric protein containing about 30% of N-linked carbohydrate rich in sialic acid, but truncated forms targeted to the nucleus have also been identified.

The precursor polypeptide chain is cleaved proteolytically to remove the 22-mer secretory signal peptide and subsequently between residues 227/228 to generate the alpha and beta chains. These are assembled anti-parallel to give a heterodimeric molecule in which the cysteine-rich centers are linked by five disulfide bridges and are flanked by two predicted coiled-coil alpha-helices and three predicted amphipathic alpha-helices. The six sites of N-linked glycosylation are indicated as yellow spots.

Across a broad range of species clusterin shows 70% to 80% of sequence homology. It is ubiquitously expressed in most mammalian tissues and can be found in plasma, milk, urine, cerebrospinal fluid and semen.

It is able to bind and form complexes with numerous partners such as immunoglobulins, lipids, heparin, bacteria, complement components, paraoxonase, beta amyloid, leptin and others. Clusterin has been ascribed a plethora of functions such as phagocyte recruitment, aggregation induction, complement attack prevention, apoptosis inhibition, membrane remodelling, lipid transport, hormone transport and/or scavenging, matrix metalloproteinase inhibition.

A detailed mechanism of clusterin has not been defined. One tempting hypothesis says that clusterin is an extracellular chaperone protecting cells from stress induced by degraded and misfolded protein precipitates. Clusterin is up- or downregulated on the mRNA or protein level in many pathological and clinically relevant situations including cancer, organ regeneration, infection, Alzheimer disease, retinitis pigmentosa, myocardial infarction, renal tubular damage, autoimmunity and others.

Research topic

Oncology, Others, Renal disease, Sepsis

Amino Acid Sequence

DQTVSDNELQ EMSNQGSKYV NKEIQNAVNG VKQIKTLIEK TNEERKTLLS NLEEAKKKKE DALNETRESE TKLKELPGVC
NETMMALWEE CKPCLKQTCM KFYARVCRSG SGLVGRQLEE FLNQSSPFYF WMNGDRIDSL LENDRQQTHM LDVMQDHF SR
ASSIIDELFQ DRFFTREPQD TYHYLPFSLP HRRPHFFFPK SRIVRSLMPF SPYEPLNFHA MFQPFLEMIH EAQQAMDIHF
HSPAFQHPPT EFIREGDDDR TVCREIRHNS TGCLRMDQC DKCREILSVD CSTNNPSQAK LRRELDLQ VAERLTRKYN
ELLKSYQWKM LNTSSLLEQL NEQFNWVSRL ANLTQGEDQY YLRVTTVASH TSDSDVPSGV TEVVVKLFDS DPITVTPVE
VSRKNPKFME TVA EKALQ EY RKKHREE **AAA DYKDDDDK**

Asp 1 to Thr 3 and Ser 5 were confirmed by N-terminal sequencing.

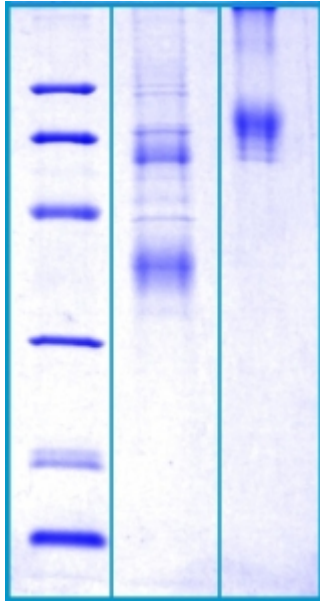
Source

HEK293

Purity

Purity as determined by densitometric image analysis: >90%

SDS-PAGE gel



12% SDS-PAGE separation of Human Clusterin
1. M.W. marker - 14, 21, 31, 45, 66, 97 kDa
2. reduced and heated sample, 5µg/lane
3. non-reduced and non-heated sample, 5µg/lane

Endotoxin

< 1.0 EU/ug

Formulation

Filtered (0.4 µm) and lyophilized from 0.5 mg/ml in 20mM Tris buffer, 50mM NaCl, pH 7.5

Reconstitution

Add deionized water to prepare a working stock solution of approximately 0.5 mg/mL and let the lyophilized pellet dissolve completely. Product is not sterile! Please filter the product by an appropriate sterile filter before using it in the cell culture.

Shipping

At ambient temperature. Upon receipt, store the product at the temperature recommended below.

Storage, Stability/Shelf Life

Store lyophilized protein at -80°C. Lyophilized protein remains stable until the expiry date when stored at -80°C. Aliquot reconstituted protein to avoid repeated freezing/thawing cycles and store at -80°C for long term storage. Reconstituted protein can be stored at 4°C for a limited period of time; it does not show any change after one week at 4°C.

Quality Control Test

BCA to determine quantity of the protein.

SDS PAGE to determine purity of the protein.

LAL TEST to determine endotoxin level.

Applications

Cell culture and/or animal studies, ELISA, Western blotting

Note

This product is intended for research use only.

References to this Product

- Zhang F, Sha J, Wood TG, Galindo CL, Garner HR, Burkart MF, Suarez G, Sierra JC, Agar SL, Peterson JW, Chopra AK. *Alteration in the activation state of new inflammation-associated targets by phospholipase A2-activating protein (PLAA)*. Cell Signal. 2008 May;20 (5):844-61
- Kliger Y, Levy O, Oren A, Ashkenazy H, Tiran Z, Novik A, Rosenberg A, Amir A, Wool A, Toporik A, Schreiber E, Eshel D, Levine Z, Cohen Y, Nold-Petry C, Dinarello CA, Borukhov I. *Peptides modulating conformational changes in secreted chaperones: from in silico design to preclinical proof of concept*. Proc Natl Acad Sci U S A. 2009 Aug 18;106 (33):13797-801
- Zhang F, Suarez G, Sha J, Sierra JC, Peterson JW, Chopra AK. *Phospholipase A2-activating protein (PLAA) enhances cisplatin-induced apoptosis in HeLa cells*. Cell Signal. 2009 Jul;21 (7):1085-99

- Cheung MC, Vaisar T, Han X, Heinecke JW, Albers JJ. *Phospholipid transfer protein in human plasma associates with proteins linked to immunity and inflammation.* *Biochemistry.* 2010 Aug 31;49 (34):7314-22

HEADQUARTERS:				
BioVendor Laboratorní medicína, a.s.	Karasek 1767/1	621 00 Brno CZECH REPUBLIC	Phone: +420-549-124-185 Fax: +420-549-211-460	E-mail: info@biovendor.com sales@biovendor.com Web: www.biovendor.com
AUSTRIA: BioVendor GesmbH	Nußdorfer Straße 20/10	1090 Vienna AUSTRIA	Phone: +43-1-89090-25 Fax: +43-1-89090-2515	E-mail: infoAustria@biovendor.com
GERMANY, SWITZERLAND: BioVendor GmbH	Otto-Hahn-Straße 16	34123 Kassel GERMANY	Phone: +49-6221-433-9100 Fax: +49-6221-433-9111	E-mail: infoEU@biovendor.com
USA, CANADA AND MEXICO: BioVendor LLC	128 Bingham Rd. Suite 1300	Asheville, NC 28806 USA	Phone: +1-828-575-9250 +1-800-404-7807 Fax: +1-828-575-9251	E-mail: infoUSA@biovendor.com
CHINA - Mainland Office: BioVendor Laboratories Ltd	Room 2917, 29/F R & F Ying Feng Plaza No.2 Huaqiang road	Pearl River New Town Guang Zhou, CHINA	Phone: +86-20-38065519 Fax: +86-20-38065529	E-mail: infoCN@biovendor.com